

September 2023 ACS Rail Updates

Welcome to the **September 2023** edition of ACS Rail updates.

You should already be aware that from 31 August 2023, free access to Network Rail's extensive catalogue of standards and controls documentation has transferred to a new (interim) website. This new site is called the Network Rail Standards Portal. See page 2 for more information.

The following pages contain summaries of updates which may be relevant to you. Please brief and distribute this information to the relevant people as per your internal procedures.

The ACS Team

Content	Page
Access to Network Rail Standards	2
Changes to Network Rail Standards	3
Making Sure You Are Aware Of The Relevant Standards.....	3
New and Up-Issued Standards.....	3
Withdrawn, Closed and Superseded Documents.....	4
Emergency Changes (Previously Known as Letters of Instruction)	5
RSSB - Standards and the rail industry	6
Railway Group Standards (RGSs).....	6
Rule Book (GE/RT8000)	6
Rule Book App.....	6
GE/RM8000 Master Module Manual	6
Controlled Document List 02 September 2023	7
Network Rail Safety Central – Information Section	19
Code of Conduct	19
Network Rail Safety Bulletins	19
Lessons Learnt / Shared Learning.....	19
Health & Wellbeing.....	20
Risk Management	20
Resource Library.....	20
SCO 24:7 (Supply Chain – Operations) Telephone	20
Emergency.....	20
To report a crime.....	20
HSE Fatigue and Risk Index (FRI) Calculator.....	20
Useful Links	21
Other Bulletins	23
Track Safety Alliance.....	23
Southern Shield.....	23
Electrical Safety Step Up.....	23
Drugs and Alcohol standard (supplier page).....	23
Miscellaneous	24
Safety 3-4-3 and Fleet 3-4-3	35

BRIEFING REQUIREMENTS:

NOTE: Contractors are responsible for arranging and undertaking and recording their own Safety and Awareness Briefings in accordance with their own processes and procedures.



Access to Network Rail Standards

From 31 August 2023, free access to Network Rail's extensive catalogue of standards and controls documentation will be via a new (interim) website.

**This new site will be called:
the Network Rail Standards Portal.**

If you have not already done so, please register for access to the Network Rail Standards Portal by [completing this registration form](#) as soon as you can, so that your new log in account can be set up.

Please ensure that you use your individual company email address, and not a generic email address.

If you have any queries re the registration form or the Network Rail Standards portal, please email: STSupplierSupport@networkrail.co.uk

Changes to Network Rail Standards

Issue 129: 02nd September 2023 – 01st December 2023

Making Sure You Are Aware Of The Relevant Standards

Every employee has a duty to comply with any mandatory Network Rail company standards and procedures relevant to their role. It is vital therefore that all employees are aware of which standards are relevant to their area of work, and where to find them.

You must make sure that the team and the activities for which you are responsible comply with the Network Rail company standards and procedures. By doing this, you will be complying with the Network Rail Health & Safety Management System and relevant legislation.

Issue 129 - 02 September 2023

New and Up-Issued Standards

References	Title	Replaces
NR/GN/CIV/300 Issue 6	Compliance Design Manual	NR/GN/CIV/300 Issue 5
NR/GN/TRK/7001 Issue 19	Index of Track Work Information Sheets (TWI)	NR/GN/TRK/7001 Issue 18
NR/L1/SCT/001 Issue 1	Security Management System (SeMS)	New
NR/L1/SIG/50021 Issue 5	Signalling Asset Policy	NR/L1/SIG/50021 Issue 4
NR/L2/CIV/1000 Issue 2	Competence Management for Buildings and Civils Infrastructure	NR/L2/CIV/1000 Issue 1
NR/L2/CIV/295 Issue 3	Scour Assessment of Bridges, Culverts and Retaining Walls	NR/L2/CIV/295 Issue 2
NR/L2/CTM/230 Issue 1	Competence and Training in Depot Plant Operation	New
NR/L2/ELP/CTM033 Issue 1	Competence and Training in OLE Electrical Safety	New
NR/L2/INF/02237 Issue 2	Electronic Signatures	NR/L2/INF/02237 Issue 1
NR/L2/MTC/EP0233 Issue 2	Lineside Hot Axle Box Detectors	NR/L2/MTC/EP0233 Issue 1
NR/L2/MTC/EP0234 Issue 2	Lineside Wheel Impact Load Detector (WILD) and Radio Frequency Identification (RFID) Tag Reader Equipment	NR/L2/MTC/EP0234 Issue 1
NR/L2/MTC/PL0175 Issue 9	Infrastructure Maintenance Planning Handbook	NR/L2/MTC/PL0175 Issue 8 NR/L3/MTC/PL0159 Issue 3 NR/L3/MTC/PL0160 Issue 3 NR/L3/MTC/PL0094 Issue 4
NR/L2/OHS/00135 Issue 1	Diversity Impact Assessments	New
NR/L2/OHS/050 Issue 5	Application of the Sentinel Scheme Rules	NR/L2/OHS/050 Issue 4
NR/L2/SIG/10158 Issue 4	Specification for Signal Sighting Assessment	NR/L2/SIG/10158 Issue 3
NR/L2/SIG/19820 Issue 11	Signalling and Level Crossing Product Specifications	NR/L2/SIG/19820 Issue 10 RT/SRS/2001 Issue 2
NR/L2/SIG/30009 Issue 26	Signalling Principles Handbook	NR/L2/SIG/30009 Issue 25
NR/L2/SIG/50035 Issue 6	Competence Standard - Competence and Training in Signal and Level Crossing Engineering	NR/L2/SIG/50035 Issue 5
NR/L2/SIG/50050 Issue 1	Topographic, Engineering, Land and Measured Building Surveying - Signalling	New
NR/L2/TEL/30002 Issue 6	Operational Concentrator System (OCS)	NR/L2/TEL/30002 Issue 5
NR/L2/TEL/30160 Issue 4	Specification for Loose-Tube Optical Fibre Network Design	NR/L2/TEL/30160 Issue 3
NR/L2/XNG/202 Issue 2	Prioritisation of Level Crossing Defects	NR/L2/XNG/202 Issue 1
NR/L3/CIV/185 Issue 4	Reporting and Investigation of Geotechnical Incidents	NR/L3/CIV/185 Issue 3
NR/L3/MTC/MG0176 Issue 10	Ellipse Work Management Handbook	NR/L3/MTC/MG0176 Issue 9
NR/L3/MTC/RCS0216 Issue 27	Risk Control Manual	NR/L3/MTC/RCS0216 Issue 26
NR/L3/OHS/005 Issue 4	Design and Construction Management in a High Street Environment	NR/L3/OHS/005 Issue 3
NR/L3/OPS/045 Issue 28	National Operating Procedures Index	NR/L3/OPS/045 Issue 27
NR/L3/SCO/313 Issue 13	On-Track Machines (OTMs) Driver and Operations Standards Manual	NR/L3/SCO/313 Issue 12
NR/L3/TRK/003 Issue 44	Index of Track Engineering Forms	NR/L3/TRK/003 Issue 43
NR/L3/TRK/3230 Issue 3	Control of On-Track Machines (OTM)	NR/L3/TRK/3230 Issue 2

Withdrawn, Closed and Superseded Documents

References	Title	Replaced by/Status
NR/GN/CIV/300 Issue 5	Compliance Design Manual	NR/GN/CIV/300 Issue 6
NR/GN/TRK/7001 Issue 18	Index of Track Work Information Sheets (TWI)	NR/GN/TRK/7001 Issue 19
NR/L1/SIG/50021 Issue 4	Signalling Asset Policy	NR/L1/SIG/50021 Issue 5
NR/L2/CIV/1000 Issue 1	Competence Management for Buildings and Civils Infrastructure	NR/L2/CIV/1000 Issue 2
NR/L2/CIV/295 Issue 2	Scour Assessment of Bridges, Culverts and Retaining Walls	NR/L2/CIV/295 Issue 3
NR/L2/INF/02237 Issue 1	Electronic Signatures	NR/L2/INF/02237 Issue 2
NR/L2/MTC/EP0233 Issue 1	Lineside Hot Axle Box Detectors	NR/L2/MTC/EP0233 Issue 2
NR/L2/MTC/EP0234 Issue 1	Lineside Wheel Impact Load Detector (WILD) and Radio Frequency Identification (RFID) Tag Reader Equipment	NR/L2/MTC/EP0234 Issue 2
NR/L2/MTC/PL0175 Issue 8	Infrastructure Maintenance Planning Handbook	NR/L2/MTC/PL0175 Issue 9
NR/L2/OHS/050 Issue 4	Sentinel Scheme Rules	NR/L2/OHS/050 Issue 5
NR/L2/SIG/10158 Issue 3	Specification for Signal Sighting Assessment	NR/L2/SIG/10158 Issue 4
NR/L2/SIG/19820 Issue 10	Signalling and Level Crossing Product Specifications	NR/L2/SIG/19820 Issue 11
NR/L2/SIG/30009 Issue 25	Signalling Principles Handbook	NR/L2/SIG/30009 Issue 26
NR/L2/SIG/50035 Issue 5	Competence Standard - Competence and Training in Signal and Level Crossing Engineering	NR/L2/SIG/50035 Issue 6
NR/L2/TEL/30002 Issue 5	Operational Concentrator System (OCS)	NR/L2/TEL/30002 Issue 6
NR/L2/TEL/30160 Issue 3	Specification for Loose-Tube Optical Fibre Network Design	NR/L2/TEL/30160 Issue 4
NR/L2/XNG/202 Issue 1	Prioritisation of Level Crossing Defects	NR/L2/XNG/202 Issue 2
NR/L3/CIV/185 Issue 3	Management of Reports of Safety Related Geotechnical Incidents	NR/L3/CIV/185 Issue 4
NR/L3/MTC/MG0176 Issue 9	Ellipse Work Management Handbook	NR/L3/MTC/MG0176 Issue 10
NR/L3/MTC/PL0094 Issue 4	Planning & Documenting the Safe System of Work Arrangements	NR/L2/MTC/PL0175 Issue 9
NR/L3/MTC/PL0159 Issue 3	Short-Term Works Planning in Infrastructure Maintenance	NR/L2/MTC/PL0175 Issue 9
NR/L3/MTC/PL0160 Issue 3	Medium-Term Works Planning in Infrastructure Maintenance	NR/L2/MTC/PL0175 Issue 9
NR/L3/MTC/RCS0216 Issue 26	Risk Control Manual	NR/L3/MTC/RCS0216 Issue 27
NR/L3/OHS/005 Issue 3	Design and Construction Management in a High Street Environment	NR/L3/OHS/005 Issue 4
NR/L3/OPS/045 Issue 27	National Operating Procedures Index	NR/L3/OPS/045 Issue 28
NR/L3/SCO/313 Issue 12	On-Track Machines (OTMs) Driver and Operations Standards Manual	NR/L3/SCO/313 Issue 13
NR/L3/TRK/003 Issue 43	Index of Track Engineering Forms	NR/L3/TRK/003 Issue 44
NR/L3/TRK/3230 Issue 2	Control of on Track Machines	NR/L3/TRK/3230 Issue 3
NR/SP/CTM/017 Issue 1	Competence & Training in Civil Engineering	Withdrawn
RT/SRS/2001 Issue 2	Requirements for Powered Point Operating Equipment	NR/L2/SIG/19820 Issue 10

Emergency Changes (Previously Known as Letters of Instruction)

To access any active Emergency Change you need to refer to its associated Network Rail Standard. **The front page of the standard will provide details of the relevant change.** When using the online service there will be an active link to each relevant change.

Reference	Title	Issue	Date
NR/BS/LI/499	Standard/control document affected: NR/L2/CIV/196 (Issue 1), Standard Specification for New and Upgraded Escalators	1	01/06/2023
NR/BS/LI/498	Standard/control document affected: NR/L1/RMVP/0001 (Issue 5), Plant and Traction & Rolling Stock Policy	1	02/05/2023
NR/BS/LI/496	Standard/control document affected: NR/L2/OHS/003 (Issue 9), Fatigue Risk Management and associated Modules	1	03/02/2023
NR/BS/LI/493	Standard/control document affected: NR/L3/OPS/045/3.32 – Temporary Block Working (TBS) & Emergency Special Working (ESW) – EXPIRES: 30/10/2023	1	20/10/2022
NR/BS/LI/490	Standard/control document affected: NR/L3/ELP/27720 Test Before Touch for Overhead Line Equipment	1	30/09/2022
NR/BS/LI/489	Standard/control document affected: NR/L3/OPS/045 3.17 Weather Arrangements (Issue 03) – EXPIRES: 01/09/2023	1	15/09/2022
NR/BS/LI/488	Standard/control document affected: NR/L2/CTM/014 (Issue 2), Competence & Training in Overhead Line Engineering	1	30/09/2022
NR/BS/LI/484	Standard/control document affected: NR/L3/ELP/27240 (Issue 11), Distribution Work Instructions – EXPIRES: 02/09/2023	1	14/02/2022
NR/BS/LI/478	Standard/control document affected: NR/SP/CTM/016 Issue 1, Competency & Training in Fixed Plant Engineering	1	30/07/2021
NR/BS/LI/442	Standard/control document affected: NR/L2/TRK/1054 (Issue 5), Inspection of cast, welded and fabricated crossings in the track – EXPIRES: 02/09/2023	1	25/03/2020
NR/BS/LI/440	Standard/control document affected: NR/L2/TRK/001 (Issue 15), Inspection and Maintenance of Permanent Way	1	25/03/2020
NR/BS/LI/383	Standard affected: NR/L2/CTM/021 (Issue 4). Competence and Training	2	08/12/2016
NR/BS/LI/371	Standard affected: NR/L2/CIV/162 (Issue 2). Platform Extensions. Location of metal structures on Third Rail area Station Platforms	1	02/03/2016
NR/BS/LI/328	Standard affected: NR/SP/ELP/21104 (ISSUE 2). Design and Installation of Electric Track Equipment for DC Electrified Lines	1	28/03/2014
NR/BS/LI/326	Standard affected: NR/L2/OHS/050 (Issue 4), Sentinel Scheme Rules – WITHDRAWN BY NR/L2/OHS/050 ISSUE 5, 02/12/2023	1	16/04/2014
NR/BS/LI/305	Standards Affected: NR/L2/TRK/001 Issue 6. NR/L2/TRK/2102 Issue 6. NR/L2/TRK/3038 Issue 5. NR/L2/TRK/0032 Issue 5. NR/L2/TRK/0132 Issue 6. NR/L3/TRK/3510/A01 Issue 1. NR/L3/TRK/3510/B01 Issue 1. NR/L3/TRK/1015 Issu	2	31/01/2014
NR/BS/LI/292	NR/L3/TRK/1010 (Issue 2). Management of responses to extreme weather conditions at structures. Earthworks and other key locations	1	18/07/2013
NR/BS/LI/256	Standard affected: NR/SP/ELP/27243 (Issue 1). Specification for Signalling Power Supplies	2	24/10/2016
NR/BS/LI/163	Standard affected: RT/CE/S/130 (Issue 1). Flash-Welded Rails: Site Welded String	2	01/10/2010
NR/BS/LI/154	Use Of The Geismar THR542 Lightweight Stressing Equipment In Tandem. Standard affected: NR/L2/TRK/3011 (Issue 6)	1	18/01/2010
NR/BS/LI/101	Standard affected: RT/CE/S/077 Storage. Installation & Testing of TSR & ESR AWS	1	08/09/2008
NR/BS/LI/060	Traction electrical distribution sites with compromised earthing due to theft of cables - affected standard NR/SP/ELP/21032	1	23/11/2006
NR/BS/LI/047-E&P	Bimold Connections on Rectifier Transformers at DC Traction Substations	1	05/05/2006
NR/BS/LI/032	Labelling of Track Isolating Switches (T.I.S)	1	17/10/2005
NR/BS/LI/028	Segregation of D.C. Track Feed Cables	1	22/08/2005

RSSB - Standards and the rail industry

Access all current (and many withdrawn) Railway Group Standards, Rail Industry Approved Codes of Practice (RACOPs), Guidance Notes (GNs) and Rail Industry Standards (RISs).

<http://www.rssb.co.uk/railway-group-standards>

Useful links:

- [Catalogues](#)
- [Latest Updates to Standards](#)
- [Using Standards](#)
- [Finding and staying up-to-date with standards](#)

Railway Group Standards (RGSs)

Mandatory requirements for the GB mainline railway system are defined in Railway Group Standards (RGSs). They facilitate the management and operation of the mainline railway as a shared system. RGSs set out technical requirements applicable to vehicles or the infrastructure, or processes applicable to transport operators.

Standards Catalogue <http://www.rssb.co.uk/railway-group-standards>

Rule Book (GE/RT8000)

The Rule Book (GE/RT8000) and other National Operations Publications are documents that contain direct instructions for railway staff.

The Rule Book is held in printed copy by over 100,000 people, and as such is probably the best known and most widely distributed in the entire RSSB catalogue. Even greater numbers of people are known to use it as a reference and information document both from the United Kingdom and abroad using the online version.

You can still order hard copies of individual standards and Rule Book modules or handbooks from Willsons External link (Tel: 01636 702334) or download them from the Railway Group Standards section of this site.

Rule Book App

Get 24/7 access to the Rule Book via your phone, tablet, desktop or laptop with the Rule Book App. It's easy to use, search, personalise and update, and you can acknowledge amendments with one touch. Find out more on our dedicated [Rule Book App page](#).

Rule Book Briefing Leaflet

[GERT8000-RBBL Iss 38.2](#)

Each issue of the Rule Book Briefing Leaflet contains a summary of the changes being introduced to GERT8000.

GE/RM8000 Master Module Manual

RSSB has produced this manual to provide end-users with access to the content of GE/RT8000 (The Rule Book) that is relevant to all roles as defined in the Rule Book Matrix published by RSSB:

Rule Book Module Matrix: <https://www.rssb.co.uk/-/media/Project/RSSB/RssbWebsite/Documents/Public/Public-content/Using-Standards/Rule-Book-Module-Matrix-with-RS525-Sept-2022.xls>

[GERM8000-master-module Iss 12.2](#)

Controlled Document List 02 September 2023

Key

StdNo	Current standard
Stdno	New Standard
StdNo	Live standard pending withdrawal
StdNo	Superseded/Withdrawn

RAIL MANAGEMENT SYSTEM		
Ref. / Title	Issue No	Issue Date
Rail Management System		

GROUP STANDARDS Website: http://www.rssb.co.uk/railway-group-standards		
Ref. / Title	Issue No	Issue Date
Modular Rulebook GE/RT8000/ (See separate page for listed modules and issue dates)	-----	-----
GERM8000 Possession Workers Manual	8.1	12/2022
GERM8000 Possession Workers Manual	9	09/2023
GERM8000 Track Workers Manual	11.1	12/2022
GERM8000 Track Workers Manual	12	09/2023
GERM8000-master-module Master Module Manual	12.2	03/2023
GERM8000-master-module Master Manual	13	09/2023
GEN8575 Guidance Note on the Management of Electrical Risk Related to Operational Tasks on Electrified Lines	1	12/2021
GEN8613 Application of human factors within safety management systems	1	03/2021
GLRT1210 AC Energy Subsystem and Interfaces to Rolling Stock Subsystem	3	12/2022
GLRT1212 DC Conductor Rail Energy Subsystem and Interfaces to Rolling Stock Subsystem	1	09/2015
GOGN3655 Guidance on Medical Fitness for Railway Safety Critical Workers	2	06/2014
GOGN3616 Guidance on Operational Railway Safety Awareness	1	06/2023
RIS-1530-PLT Rail Industry Standard for Technical Requirements for On-Track Plant and their Associated Equipment and Trolleys	6	12/2015
RIS-1530-PLT Rail Industry Standard - On-Track Plant, Trolleys and Associated Equipment	7	09/2023
RIS-2750-RST Supplier Assurance	1.1	12/2021
RIS-3118-TOM Incident Response Planning & Management	2	12/2019
RIS-3119-TOM Accident and Incident Investigation	3	03/2022
RIS-3279-TOM High Visibility Clothing	2	09/2019
RIS-3701-TOM Confidential Reporting System for Rail Staff	2.1	12/2019
RIS-8046-TOM Spoken Safety Critical Communications	2	12/2016
RIS-8047-TOM Reporting of Safety Related Information	2	03/2018
RIS-8070-TOM Drugs and alcohol testing for safety-critical workers	2	03/2022

LONDON UNDERGROUND (LU) STANDARDS		
Ref. / Title	Issue No	Issue Date
LUL G1163 Stations DLO - Failure Reporting Analysis & Corrective Action System (FRACAS)	A2	11/2015
LUL G1164 Making a Referral to the Drug and Alcohol Advisory and Treatment Service DAATS	A3	09/2019
LUL G1234 Incident recording, investigation and reporting	A5	05/2021
LUL G1241 Alcohol and Drugs at Work Guidelines and Information For Managers	6	07/2009
LUL G1242 Alcohol and Drugs at Work – Managers For Cause and Post Incident Check List	A4	04/2020
LUL G1249 Environmental Incident Categories	A5	07/2018
LUL G2020 Wuhan novel coronavirus	A1	01/2020
LUL G557 Electronic Incident Reporting Form (eIRF)	A5	03/2014
LUL LF29 Incident investigation & reporting or recording What you need to remember	01	n/a

LONDON UNDERGROUND (LU) STANDARDS		
Ref. / Title	Issue No	Issue Date
LUL R0350 Guidance and advice for the use of personal protective equipment	A1	01/2014
LUL R0403 Personal Protective Equipment (PPE) catalogue	1.1	01/2014
LUL S1053 Civil Engineering – Building and Station Structures	A15	01/2023
LUL S1061 Civil Engineering – Bridges and Structures Assessment	A7	01/2023
LUL S1251 Alcohol and Work; includes Written Notice 12/24/2014, 6/16/2015	A2	11/2011
LUL S1257 Drugs and Work; Includes Written Notice 01317: 12/24/2014	A2	11/2011
LUL S1538 Assurance	A17	08/2022
LUL S1548 Safety Critical Work	A7	09/2021
LUL S1552 Contract QUENSH Conditions Incorporating written notice: 05/10/2017, 05/02/2019, 16/03/2022	A18	11/2016
LUL S1601 Management Arrangements to Assure Medical Fitness	A6	12/2022
LUL S1602 Corporate Medical Standard for Personnel Requiring Safety on the Track Certification	A12	11/2022
LUL S1603 Audiometric standard for personnel requiring safety on the track certification	A8	10/2022
LUL S1604 Vision standard for personnel requiring safety on the Track Certification	A10	12/2022
LUL S1605 Providers of Medical Assessment for Track Certification and other Safety Critical Certification Purposes	A5	10/2022
LUL S1801 Competence requirements for undertaking Civil Engineering Safety Critical Work	A2	03/2022

NETWORK RAIL STANDARDS		
Ref. / Title	Issue No	Issue Date
NR/CAT/STP/001 Catalogue of Network Rail Standards	129	09/2023
PTS Handbook RT 3170	10	11/2020
NR/L2/AMG/1030 Working Safely in the Vicinity of Buried Services	1	12/2008
NR/GN/CIV/003 Guidance on Engineering and Architectural Assurance of Building and Civil Engineering Works	1	12/2021
NR/GN/CIV/065 Examination of Earthworks Guidance Manual	2	09/2022
NR/GN/CIV/208 Ground Investigation	1	12/2018
NR/L1/CIV/601 Managing the Highways Interface	1	12/2021
NR/L2/CIV/003 Engineering and Architectural Assurance of Building and Civil Engineering Works	7	12/2021
NR/L2/CIV/032 The Management of Structures Manual	1	12/2021
NR/L2/CIV/035 Management of Structures	2	06/2019
NR/L2/CIV/039 Assessment and Certification of Protective Coatings Replaces: • NR/L3/CIV/039 Issue 5	1	06/2023
NR/L2/CIV/076 Management of Bridge Strikes Replaces NR/L3/CIV/076 Issue 4 and NR/L3/CIV/176 Issue 4	1	03/2023
NR/L2/CIV/086 Management of Earthworks	11	12/2021
NR/L2/CIV/1000 Competence Management for Buildings and Civils Infrastructure	1	09/2022
NR/L2/CIV/171 Examinations, Inspections and Assessments of Buildings & Architecture Assets: Structures and Fabric	3	09/2022
NR/L2/CIV/250 Landlord's Consent	1	03/2020
NR/L2/CIV/295 Scour Assessment of Bridges, Culverts and Retaining Walls	2	09/2018
NR/L2/CIV/295 Scour Assessment of Bridges, Culverts and Retaining Walls	3	09/2023
NR/L2/CIV/602 Highways Interface Planning Process	1	12/2021
NR/L2/CIV/1000 Competence Management for Buildings and Civils Infrastructure	2	09/2023
NR/L3/CIV/0001 Management of Road Vehicle Incursions (RVI)	3	12/2022

NETWORK RAIL STANDARDS		
Ref. / Title	Issue No	Issue Date
NR/L3/CIV/006 Structures, Tunnels and Occupational Property Examinations	11	03/2023
NR/L3/CIV/0063 Piling, Drilling, Crane, MEWP and SMPT operations adjacent to the Railway	1	12/2021
NR/L3/CIV/040 Work Instruction for the use of Protective Coating Systems	3	06/2023
NR/L3/CIV/170 Assessment of Tunnels	2	12/2021
NR/L3/CIV/185 Management of Reports of Safety Related Geotechnical Incidents	3	09/2020
NR/L3/CIV/185 Management of Reports of Safety Related Geotechnical Incidents	4	09/2023
NR/L3/CIV/190 Developing Extreme Weather Plans	1	12/2017
NR/L3/CIV/603 Working at the Highways Interface	1	12/2021
NR/L3/CIV/604 Highways Interface Manual	1	12/2021
NR/GN/CPR/401 Guidance on Contractual Health and Safety Requirements	1	12/2008
NR/L2/CPR/201 Supplier Qualification	2	12/2011
NR/L2/CPR/302 Supplier Qualification - Core Requirements (For PCL / POL Holders)	2	09/2011
NR/L2/CSG/STP001 Standards and Controls Management Manual	8	06/2020
NR/CS/CTM/001 Competence Management	1	12/2006
NR/L2/CTM/017 Competence and Training in Civil Engineering	1	06/2006
NR/L2/CTM/021 Competence & Training in Track Safety	4	12/2010
NR/L2/CTM/025 Competence & Training in On-Track Plant Operation & Activities	2	03/2021
NR/L2/CTM/201 Competence Management	2	03/2012
NR/L2/CTM/202 Quality Assurance in Training & Assessment	3	12/2019
NR/L2/CTM/209 Competence & Training in Safe System of Work Planner	1	12/2010
NR/L2/CTM/220 Competence & Training in Portable, Transportable & Mobile Plant (PTMP) Operation & Activities	2	06/2021
NR/L2/CTM/223 Competence & Training in Managing Site Safety	1	06/2011
NR/SP/CTM/017 Competence & Training in Civil Engineering. Replaced by NR/L2/CIV/1000	1	06/2006
NR/L2/ELP/21085 Earthing and Bonding on A.C. Electrified Railways	6	09/2022
NR/L2/ELP/21087 Specification of Maintenance Frequency and Defect Prioritisation of Overhead Line Electrification Equipment	10	06/2023
NR/L2/ELP/21088 General Maintenance Parameters for Overhead Line Electrification Equipment	4	06/2021
NR/L2/ELP/21090 OLE Seasonal Preparation Response for Extreme Weather	1	12/2020
NR/L2/ELP/21131 Warning and Other Signs for A.C. and D.C. Electrified Lines	4	03/2023
NR/L2/ELP/23002 Specification for High Voltage AC Cables, AC Traction Earthing and Bonding Cables DC Traction Cables, Pilot Cables and Associated Accessories	1	12/2020
NR/L2/ELP/27009 Overhead Line Equipment Campaign Changes	3	03/2017
NR/L2/ELP/27023 Conductor Rail Heating Standard	1	12/2020
NR/L2/ELP/27172 Conductor Rail Guard Boarding	1	06/2021
NR/L2/ELP/27307 Management of M&EE Safety Related Event Reports	4	12/2017
NR/L2/ELP/27402 Specification for protection and control devices for electrical systems	1	12/2009
NR/L2/ELP/27715 Overhead Contact System Design Specification	3	09/2018
NR/L2/ELP/27717 Bridge Parapet Electrical Risk Assessment	1	03/2023
NR/L2/ELP/27722 Protection Principles for A.C. Electrified Railways	1	03/2023

NETWORK RAIL STANDARDS		
Ref. / Title	Issue No	Issue Date
NR/L2/ELP/27800 Specification for 25 kV a.c. Earthing Pantographs and Interface with Vehicle (On Track Plant or Road Rail Vehicles)	1	12/2020
NR/L2/ELP/CTM033 Competence and training in OLE electrical safety	1	09/2023
NR/L3/ELP/21067 Instructions for Making out Issuing and Cancelling High Voltage Permits to Work, Sanctions for Test and Circuit State Certificates	6	03/2023
NR/L3/ELP/22001 Procedures and Competence Requirements for Persons Undertaking Works Near High Voltage Cables and Cable Routes	2	06/2022
NR/L3/ELP/27051 Working Instructions for d.c. Electrified Lines in the Liverpool Area	6	09/2019
NR/L3/ELP/27052 Working Instructions for D.C. Electrified Lines on the Northern City Line	8	03/2023
NR/L3/ELP/27115 Arrangements for Isolation of the Conductor Rail for Pre-Planned Possessions of the Line	4	09/2018
NR/L3/ELP/27140 Application of Short Circuits for Conductor Rail Isolations	4	03/2019
NR/L3/ELP/27171 Electrical Insulating Gloves - Replaces NR/WI/ELP/27171	3	06/2021
NR/L3/ELP/27237 Overhead Line Work Instructions	24	06/2023
NR/L3/ELP/27250 Conductor Rail Equipment Design and Maintenance Working Instructions Replaces: <ul style="list-style-type: none"> NR/L3/ELP/27250 Issue 6 NR/SP/ELP/21104 Issue 2 NR/GN/ELP/27019 Issue 2 NR/GN/ELP/27020 Issue 2 NR/SP/ELP/27021 Issue 2 NR/GN/ELP/27022 Issue 2 NR/SP/ELP/27192 Issue 2 	7	06/2023
NR/L3/ELP/27720 Test Before Touch for Overhead Line Equipment	1	09/2022
NR/L3/ELP/29987 Working on or About 25 KV AC Electrified Lines	9	06/2023
NR/L3/ELP/3091 DC Electrified Lines Working Instructions	5	09/2019
NR/L3/ELP/SAI25 Working On or About Overhead Line Equipment (SAI)	1	06/2023
NR/L2/ENV/015 Environment and Social Minimum Requirements for Projects – Design and Construction	9	06/2021
NR/L2/ENV/115 Environment and Social Management System Requirements	1	03/2018
NR/L2/ENV/120 Waste Management	2	06/2023
NR/L2/ENV/121 Managing Environmental and Social Impact of Noise and Vibration	1	12/2019
NR/L2/ENV/122 Biodiversity	2	03/2023
NR/L2/ENV/123 Prevention of Pollution to Land and Water	1	12/2019
NR/L2/INF/02202 Records Management of Health and Safety Files	7	06/2023
NR/L3/INF/02226 Corporate Records Retention Schedule	3	12/2017
NR/GN/INI/001 Guidance on the Management of Door to Door Work & Travel Time	1	12/2008
NR/L2/INI/EDT/CP0091 Specification for Computer Aided Design	4	12/2018
NR/L3/INI/CP0028 Contract Requirements - Quality	3	06/2012
NR/L3/INI/CP0036 Provision of Welfare Facilities	4	08/2008
NR/L3/INV/3001 Reporting and Investigation Manual	7	09/2021
NR/GN/MTC/089 Guidance for the Exchange of Asset Data and the Continuing Maintenance of Assets Undergoing Change	1	09/2020

NETWORK RAIL STANDARDS		
Ref. / Title	Issue No	Issue Date
NR/L2/MTC/089 Arrangements for the Exchange of Asset Data and the Continuing Maintenance of Assets Undergoing Change	2	12/2018
NR/L3/MTC/CP009 COVID-19 Contingency Plan: Safe Working Practices	11	03/2022
NR/L3/MTC/EN0100 Waste Management	3	06/2012
NR/L3/MTC/EN0101 Management of Discharges to Sewers & Controlled Waters	3	06/2012
NR/L3/MTC/EN0225 Environ Management System for Infrastructure Maintenance	1	06/2012
NR/L3/MTC/EP0152 Working on or Adjacent to Conductor Rail	5	12/2011
NR/L3/MTC/MG0173 Monitoring of Spoken Safety Communications	4	09/2022
NR/L3/MTC/MG0210 Management of Maintenance Work within a Worksite to Prevent a Possession Overrun	3	06/2019
NR/L3/MTC/MG0213 Index of Standard Maintenance Forms	19	03/2023
NR/L3/MTC/RCS0216 Risk Control Manual	26	09/2023
NR/L3/MTC/RCS0216/OLE02 Risk Control Manual: Working on Red Bonds/Impedance Bonds	2	03/2012
NR/L3/MTC/SE0115 Confined Spaces Working & Entry Procedure	2	06/2008
NR/L3/MTC/SE0117 Planned Assurance Inspections and Site Surveillance	4	09/2018
NR/L3/MTC/SE0220 Planning and Delivering Safe Working at Height	2	09/2020
NR/CS/OHS/002 Policy on Working Safely	1	02/2007
NR/GN/OHS/00155 Short-term Changes in the Creation and Application of Safe Work Packs and Briefing Arrangements COVID-19 Contingency Plan (Guidance for Regions on NR/L2/OHS/019)	1	06/2020
NR/L1/OHS/052 Traumatic Incident Management	1	06/2016
NR/L2/OHS/00110 First Aid at Work	6	09/2017
NR/L2/OHS/00112 Worksafe Procedure	3	09/2020
NR/L2/OHS/00120 Drugs, Alcohol and Substance Misuse in the Workplace	7	03/2023
NR/L2/OHS/00124 Competence Specific Medical Fitness Requirements and Occupational Health Provider Requirements for Medical Assessments	3	12/2016
NR/L2/OHS/00130 Creating a Site of Work Segregated from the Railway	2	06/2023
NR/L2/OHS/003 Fatigue Risk Management	9	12/2019
NR/L2/OHS/0044 Planning and Managing Construction Work replaces NR/L3/INI/CP0044 Work Package Planning	5	12/2016
NR/L2/OHS/0047 Managing Health and Safety in Construction (Application of the Construction (Design and Management) Regulations to Network Rail)	7	06/2019
NR/L2/OHS/019 Safety of People working on or near the Line	12	06/2023
NR/L2/OHS/020 Track Visitor Permits	5	08/2008
NR/L2/OHS/021 Personal Protective Equipment (PPE)	5	06/2023
NR/L2/OHS/022 Working Safely at Height	2	03/2020
NR/L2/OHS/032 Training, Competence and Assessment in Accident and Incident Investigation	3	09/2021
NR/L2/OHS/050 Sentinel Scheme Rules	4	03/2011
NR/L2/OHS/050 Application of the Sentinel Scheme Rules	5	09/2023
NR/L2/OHS/053 Assessing Risk of Stress in the Workplace	3	03/2022
NR/L2/OHS/157 Health surveillance for silica and asbestos and the management of diagnosed occupational respiratory conditions	1	03/2017
NR/L2/OHS/501 Trackworker Protection and Warning Systems	7	03/2023
NR/L2/OHS/CP0070 Principal Contractor Licensing Assurance (aka NR/L2/INI/CP0070)	6	12/2022
NR/L3/OHS/0046 The Reporting, Investigation and Recording of Safety and Sustainable Development Events and Close Calls within Infrastructure Projects	3	06/2018
NR/L3/OHS/005 Design and Construction in a High Street Environment	3	06/2022
NR/L3/OHS/005 Design and Construction Management in a High Street Environment	4	09/2023

NETWORK RAIL STANDARDS		
Ref. / Title	Issue No	Issue Date
NR/L2/OPS/033 Recording Spoken Safety Critical Communications between Possession Management and Engineering Trains / On-Track Plant Drivers when Working in Possessions and Worksites.	3	06/2019
NR/L2/OPS/207 Training and Competence in Engineering Access Planning (formerly NR/L2/CTM/207 – Competence and Training in Planning)	1	03/2023
NR/L2/OPS/291 Railway Crime Risk Management	1	12/2019
NR/L3/OPS/0064 Delivering Work within Possessions – Replaces NR/L3/INI/CP0064	6	06/2021
NR/L3/OPS/084 Line Clear Arrangements Following Engineering Works in Axle Counter Areas – Line Clear Verification Process	6	12/2021
NR/L3/OPS/251 Unmanned Aircraft System (Drone/UAS) Operations	4	09/2021
NR/OPS/DEV/009 Network Rail: Good Practice Guide for Working at Operational Locations (Signal Boxes, Electrical Control Rooms, Controls) During COVID 19	2	06/2020
NR/GN/OTK/5000 Index of Off-Track Drawings	3	12/2021
NR/L2/OTK/5201 Lineside Vegetation Management Manual	5	12/2020
NR/GN/RMVP/0200 Infrastructure Plant Manual Guidance	2	06/2022
NR/L2/RMVP/0200 Infrastructure Plant Manual	11	06/2022
NR/L3/RMVP/0201 Calibration Work Instruction Manual Replaces NR/L3/MTC/ME0201 This standard provides the index and version control of Calibration Work Instructions for the internal calibration and comparison checking of Inspection, Measuring and Test Equipment (IMTE).	2	09/2011
NR/L2/RSE/0005 Product Design for Reliability	5	12/2020
NR/L2/RSE/02009 Engineering Management for Projects	8	03/2023
NR/L2/RSE/070 Engineering Verification	3	03/2022
NR/L2/RSE/100 Network Rail Acceptance Panel processes	7	12/2021
NR/L2/RSE/CONM/001 Construction Management for Projects	1	06/2023
NR/L1/RSK/001 Network Rail Risk Policy	3	09/2019
NR/L2/SCO/302 Supplier Qualification Requirements	1	06/2020
NR/L2/SCO/310 Control of Movements in Depots, Yards and Associated Depot Sidings (Methods of Work)	1	12/2022
NR/L3/SCO/313 On-Track Machines (OTMs) Driver and Operations Standards Manual	12	12/2022
NR/L3/SCO/313 On-Track Machines (OTMs) Driver and Operations Standards Manual	13	09/2023
NR/L3/SCO/314 Engineering Assurance for T&RS, OTM and OTP Projects	3	06/2023
NR/L3/SCO/320 Supplier Quality Assurance (SQA)	2	09/2020
NR/L1/SCT/001 Security Management System (SeMS)	1	09/2023
NR/L1/SCT/002 Cyber Security and Resilience for Digital Systems Replaces NR/L1/INF/02232 Issue 2	1	03/2023
NR/SIN/185 Identification and Inspection of Plain-Lined S&C	1	06/2019
NR/L2/SIG/10160 Specification for Application of the IRSE Licensing Scheme	3	12/2020
NR/L2/SIG/11201 Signalling Design Handbook	17	03/2023
NR/L2/SIG/14201 Signalling Risk Assessment Handbook	5	12/2020
NR/L2/SIG/30009 Signalling Principles Handbook	25	06/2023
NR/L2/SIG/30009 Signalling Principles Handbook	2526	09/2023

NETWORK RAIL STANDARDS		
Ref. / Title	Issue No	Issue Date
NR/L2/SIG/30014 Signalling Works Testing Handbook	22	06/2023
NR/L2/SIG/50035 Competence Standard - Competence and Training in Signal and Level Crossing Engineering	5	12/2022
NR/L2/SIG/50035 Competence Standard - Competence and Training in Signal and Level Crossing Engineering	6	09/2023
NR/L2/SIG/50040 Temporary Speed Restrictions replaces NR/L3/SIG/MG0110	1	12/2021
NR/L2/SIG/50050 Topographic, engineering, land and measured building surveying – Signalling	1	09/2023
NR/L3/SIG/10064 General Instructions to Staff Working on S&T Equipment	11	06/2022
NR/L3/SIG/10661 Signal Maintenance Task Intervals	24	06/2023
NR/L3/SIG/10663 Signal Maintenance Specifications	16	03/2023
NR/L3/SIG/10665 Reliability Centred Maintenance of Signalling Equipment	23	06/2023
NR/L3/SIG/11231 Signal Maintenance Testing Handbook	18	03/2023
NR/L3/SIG/11235 Signal Intermediate Testing Handbook	2	03/2023
NR/L3/SIGELP/50000 Safe working and maintenance on or near Signalling Power Distribution Equipment above 175 volts	4	09/2021
NR/L3/SIGELP/50001 Signalling Power Distribution Equipment above 175 Volts (Work Instructions)	5	09/2021
NR/L3/SIGELP/50002 Safe Working Practices When Working on or Near Signalling Power Distribution Equipment Above 175 Volts	1	12/2016
NR/L3/SIGELP/50003 Safe Working Practices When Working on or Near Signalling Equipment	1	03/2018
NR/L2/TEL/30067 The Transmission of Safety Related Information	2	12/2011
NR/L2/TEL/30156 Functional Requirements for Safety Related Communications Equipment for On Track Plant Working	1	12/2011
NR/L3/TEL/30181 Telecoms Maintenance Work Instructions Handbook	9	06/2023
NR/GN/TRK/7001 Index of Track Work Information Sheets (TWI)	18	06/2022
NR/GN/TRK/7001 Index of Track Work Information Sheets (TWI)	19	09/2023
NR/L1/TRK/100 Management of Track Assets	1	03/2020
NR/L2/TRK/001 Inspection and Maintenance of Permanent Way	23	06/2023
NR/L2/TRK/1054 Inspection and Maintenance Procedures for Crossings in Track	6	09/2022
NR/L2/TRK/3415 Refurbishment of Switches and Crossings	3	03/2023
NR/L2/TRK/4239 Track Bed Investigation, Design and Installation	2	09/2020
NR/L2/TRK/6100 The Installation and Maintenance of Stretcher Bars	6	06/2023
NR/L2/TRK/7014 Standardised Risk Based Maintenance Regime (RBM) for the Inspection and Maintenance of the Permanent Way	2	03/2022
NR/L3/TRK/003 Index of Track Engineering Forms	43	06/2023
NR/L3/TRK/003 Index of Track Engineering Forms	44	09/2023
NR/L3/TRK/1015 Management of Basic Visual Inspection	8	03/2023
NR/L3/TRK/1020 Track Hand Back for Projects: Confirming Track Is Safe for Opening at the Selected Line Speed After Projects Engineering Work – Replaces <ul style="list-style-type: none"> NR/L3/TRK/1017 Issue 1 	1	12/2022
NR/L3/TRK/3230 Control of On-Track Machines (OTM)	3	09/2023
NR/L3/TRK/3530 Track Lubricants	1	06/2012
NR/L3/TRK/7006 Creation and Application of an Emergency Speed Restriction (ESR) Design	3	09/2022
NR/L3/TRK/7013 Planning and Installation of Temporary Rail Joints	1	09/2021
NR/SP/TRK/1110 Qualification and Certification of Non-Destructive Testing Personnel	2	06/2023

OTHER STANDARDS & GUIDANCE	
Ref. / Title	Reference
BS EN ISO 14001:2015	2015
BS EN ISO 9001:2015	2015
BS EN ISO 45001:2018	2018
Investigating Accidents and Incidents – HS(G)245	ISBN 9780717628278
Management of Health and Safety at Work Regulations 1999 Approved Code of Practice and guidance	ISBN 9780717624881
Managing health and safety in construction Construction (Design and Management) Regulations 2015. Guidance on Regulations	ISBN 9780717666263
Successful Health and Safety Management – HS(G)65	ISBN 9780717612765
Sentinel Scheme Rules https://info.railsentinel.co.uk/about/rules/	V4 26 March 2020 Compliance Date 26 March 2020
RTAS Rules QA Reference – National Skills Academy for Rail (nsar.co.uk)	V2.1 Effective 1 August 2022

LEGISLATION	
Ref. / Title	Reference
Bribery Act 2010	2010 c. 23
Control of Asbestos at Work Regulations 2002	2002 No. 2675
Control of Pollution (Amendment) Act 1989	1989 c. 14
Control of Pollution Act 1974	1974 c. 40
Corporate Manslaughter and Corporate Homicide Act 2007	2007 c. 19
Data Protection Act 2018	2018 c. 12
Environmental Protection Act 1990	1990 c. 43
European Union (Future Relationship) Act 2020	2020 c. 29
Health & Safety at Work etc. Act 1974	1974 c. 37
Modern Slavery Act 2015	2015 c. 30
Pollution Prevention and Control Act 1999	1999 c. 24
The Confined Spaces Regulations 1997	1997 No. 1713
The Construction (Design and Management) Regulations 2015	2015 No. 51
The Control of Asbestos at Work (Amendment) Regulations 1992	1992 No. 3068
The Control of Asbestos at Work (Amendment) Regulations 1998	1998 No. 3235
The Control of Asbestos at Work Regulations 1987	1987 No. 2115
The Control of Asbestos in the Air Regulations 1990	1990 No. 556
The Control of Asbestos Regulations 2006	2006 No. 2739
The Control of Asbestos Regulations 2012	2012 No. 632
The Control of Lead at Work Regulations 1980	1980 No. 1248
The Control of Lead at Work Regulations 1998	1998 No. 543
The Control of Lead at Work Regulations 2002	2002 No. 2676
The Control of Noise at Work Regulations 2005	2005 No. 1643
The Control of Substances Hazardous to Health (Amendment) Regulations 2004	2004 No. 3386
The Control of Substances Hazardous to Health Regulations 2002	2002 No. 2677

LEGISLATION	
Ref. / Title	Reference
The Environmental Noise, Site Waste Management Plans and Spreadable Fats etc. (Revocations and Amendments) Regulations 2013	2013 No. 2854
The Fire Precautions (Workplace) Regulations 1997	1997 No. 1840
The Fire Safety (England) Regulations 2022	2022 No. 547
The Fire Safety Act 2021 (Commencement) (England) Regulations 2022	2022 No. 544 (C. 26)
The Hazardous Waste (England and Wales) (Amendment) Regulations 2009	2009 No. 507
The Hazardous Waste (England and Wales) Regulations 2005	2005 No. 894
The Health and Safety (Consultation with Employees) Regulations 1996	1996 No. 1513
The Health and Safety (Display Screen Equipment) Regulations 1992	1992 No. 2792
The Health and Safety (First-Aid) Regulations 1981	1981 No. 917
The Health Protection (Coronavirus, Collection of Contact Details etc and Related Requirements) Regulations 2020	2020 No. 1005
The Health Protection (Coronavirus, International Travel) (England) Regulations 2020	2020 No. 568
The Health Protection (Coronavirus, Restrictions) (All Tiers) (England) Regulations 2020	2020 No. 1374
The Health Protection (Coronavirus, Restrictions) (England) (No. 3) Regulations 2020	2020 No. 750
The Health Protection (Coronavirus, Restrictions) (Local Authority Enforcement Powers and Amendment) (England) Regulations 2020	2020 No. 1375
The Health Protection (Coronavirus, Restrictions) (Self-Isolation) (England) Regulations 2020	2020 No. 1045
The Health Protection (Coronavirus, Wearing of Face Coverings in a Relevant Place) (England) Regulations 2020	2020 No. 791
The Health Protection (Notification) (Amendment) Regulations 2022	2022 No. 616
The Lifting Operations and Lifting Equipment Regulations 1998	1998 No. 2307
The Manual Handling Operations Regulations 1992	1992 No. 2793
The Personal Protective Equipment (EC Directive) Regulations 1992	1992 No. 3139
The Personal Protective Equipment at Work Regulations 1992	1992 No. 2966
The Personal Protective Equipment Regulations 2002 (Revoked)	2002 No. 1144
The Personal Protective Equipment at Work (Amendment) Regulations 2022	2022 No. 8
The Provision and Use of Work Equipment Regulations 1992	1992 No. 2932
The Provision and Use of Work Equipment Regulations 1998	1998 No. 2306
The Railways and Other Guided Transport Systems (Safety) Regulations 2006	2006 No. 599
The Regulatory Reform (Fire Safety) Order 2005	2005 No. 1541
The Reporting of Injuries, Diseases and Dangerous Occurrences Regulations 2013	2013 No. 1471
The Safety Representatives and Safety Committees Regulations 1977	1977 No. 500
The Waste Management (England and Wales) Regulations 2006	2006 No. 937
The Work in Compressed Air Regulations 1996	1996 No. 1656
The Workplace (Health, Safety and Welfare) Regulations 1992	1992 No. 3004
Transport and Works Act 1992	1992 c. 42
Water Resources Act 1991	1991 c. 57
Wildlife and Countryside (Amendment) Act 1991	1991 c. 39
Wildlife and Countryside Act 1981	1981 c. 69

Key

StdNo	Current standard
Stdno	New Standard
StdNo	Live standard pending withdrawal
StdNo	Superseded/Withdrawn

Modular Rulebook GE/RT8000

PTS Only

In most cases only PTS handbook is required, unless one of the following applies:

1. Index, amendment module and Module *G1* to be issued to the following:

Supervisors and managers who issue publications
Staff who operate signal post replacement switches
Staff who place protection for Line Blockage or T3
Staff who secure points
Those who use tents on or near the line

2. Index and amendment module to be issued to the following:

Lookouts
People who take charge of cranes and equipment which could foul an open line
People who take charge of work on or near points
People who carry out patrolling/inspecting duties

Other competencies (IWA, COSS, PC, ES, MC, CC)

Rule Book			
Doc No & Issue	Issue Date	Title	Synopsis
GERT8000 Issue Iss 35	Sep 2022	Rule Book Module Issue History	This document contains updates to align with changes to Rule Book module issues (GERT8000).
GERT8000 Issue Iss 36	Sep 2023	Rule Book Module Issue History	This document contains updates to align with changes to Rule Book module issues (GERT8000).
GERT8000 Issue HB Iss 16	Sep 2022	Rule Book Handbook Issue History	This document contains updates to align with changes to Rule Book Handbook issues (GERT8000).
GERT8000 Issue HB Iss 17	Sep 2023	Rule Book Handbook Issue History	This document contains updates to align with changes to Rule Book Handbook issues (GERT8000).
GERT8000-RBBL Iss 38.2	Feb 2023	Rule Book Briefing Leaflet	Each issue of the Rule Book Briefing Leaflet contains a summary of the changes being introduced to GERT8000.
GERT8000-RBBL Iss 39	Sep 2023	Rule Book Briefing Leaflet	Each issue of the Rule Book Briefing Leaflet contains a summary of the changes being introduced to GERT8000.
GERT8000-Gloss Iss 6	Sep 2022	Glossary of Railway Terminology	You will need this glossary if you are issued with GERT8000.
GERT8000-Gloss Iss 7	Sep 2022	Glossary of Railway Terminology	You will need this glossary if you are issued with GERT8000.
GERT8000-AC Iss 7	Dec 2021	AC electrified lines	You will need this module if you carry out the duties of a train driver, guard, shunter, designated person (DP), signaller, crossing keeper or person in charge of sidings in AC electrified areas.
GERT8000-DC Iss 5	Dec 2021	DC electrified lines	You will need this module if you carry out the duties of a train driver, guard, shunter, designated person (DP), signaller, crossing keeper in DC electrified areas.
GERT8000-G1 Iss 9.1	Dec 2022	General safety responsibilities and personal track safety for non-trackworkers	You will need this module if you carry out the duties of: <ul style="list-style-type: none"> • a train driver • a guard • a shunter • a designated person (DP) • a signaller • a crossing keeper • platform staff.

Rule Book			
Doc No & Issue	Issue Date	Title	Synopsis
GERT8000-HB1 Iss 7	Sep 2021	General duties and track safety for track workers	This handbook is for those personnel who need to go on the operational railway to carry out their duties, with the exception of a train driver, guard, shunter, signaller, crossing keeper or designated person (DP).
GERT8000-HB10 Iss 4.1	Dec 2022	Duties of the COSS or SWL and person in charge when using a hand trolley	You will need this handbook if you are the COSS or SWL and person in charge when using a hand trolley. The Rule Book has been reviewed to remove cases of gender-specific language which can be taken as an assumption that only males are involved. All references to to level crossings as being 'manned' in handbook 10 have been replaced with the term 'manually-controlled'.
GERT8000-HB10 Iss 5	Sep 2023	Duties of the COSS and person in charge when using a hand trolley	You will need this handbook if you are the COSS or SWL and person in charge when using a hand trolley.
GERT8000-HB11 Iss 10	Sep 2022	Duties of the person in charge of the possession (PICOP)	You will need this handbook if you carry out the duties of the PICOP.
GERT8000-HB12 Iss 9	Sep 2022	Duties of the engineering supervisor (ES) or safe work leader (SWL) in a possession	You will need this handbook if you carry out the duties of the ES or SWL in a possession.
GERT8000-HB13 Iss 3	Sep 2022	Duties of the person in charge of the siding possession (PICOS)	You will need this handbook if you carry out the duties of a PICOS.
GERT8000-HB13 Iss 4	Sep 2023	Duties of the person in charge of the siding possession (PICOS)	You will need this handbook if you carry out the duties of a PICOS.
GERT8000-HB14 Iss 3	Mar 2021	Duties of the person in charge of loading and unloading rail vehicles during engineering work	You will need this handbook if you carry out the duties of the person in charge of loading and unloading rail vehicles during engineering work.
GERT8000-HB15 Iss 6	Sep 2022	Duties of the machine controller (MC) and on-track plant operator	You will need this handbook if you carry out the duties of the machine controller (MC) and on-track plant operator.
GERT8000-HB16 Iss 5	Dec 2021	AC electrified lines	This handbook is for those personnel who need to go on the operational railway in an AC electrified area to carry out their duties.
GERT8000-HB17 Iss 4	Dec 2021	DC electrified lines	This handbook is for those personnel who need to go on the operational railway in an DC electrified area to carry out their duties.
GERT8000-HB18 Iss 4	Sep 2015	Duties of a Level Crossing Attendant	You will need this handbook if you carry out the duties of a level crossing attendant. This document has been updated as part of the December 2015 Rule Book Programme.
GERT8000-HB19 Iss 4.1	Nov 2022	Work on signalling equipment - duties of the signalling technician	You will need this handbook if you carry out the duties of a signalling technician.
GERT8000-HB19 Iss 5	Sep 2023	Work on signalling equipment - duties of the signalling technician	You will need this handbook if you carry out the duties of a signalling technician.
GERT8000-HB2 Iss 2	Sep 2015	Instructions for track workers who use emergency protection equipment	This handbook is for those personnel who need to go on the operational railway to carry out their duties and have been trained to carry out emergency protection. It does not apply to: train drivers, guards, shunters, signallers, crossing keepers and those who act as a designated person (DP). This document has been updated as part of the December 2015 Rule Book Programme.
GERT8000-HB20 Iss 4	Sep 2021	General duties of a safe work leader (SWL) working outside a possession	You will need this handbook if you have the general duties of a safe work leader working outside a possession.
GERT8000-HB20 Iss 4	Sep 2021	General duties of a safe work leader (SWL) working outside a possession	You will need this handbook if you have the general duties of a safe work leader working outside a possession.
GERT8000-HB21 Iss 5	Sep 2021	Safe work leader (SWL) blocking a line	You will need this handbook if you carry out the duties of a IWA, COSS or PC blocking a line.
GERT8000-HB21 Iss 5	Sep 2021	Safe work leader (SWL) blocking a line	You will need this handbook if you carry out the duties of a IWA, COSS or PC blocking a line.
GERT8000-HB3 Iss 3	Sep 2014	Duties of the lookout and site warden	This handbook is for those personnel who have duties of the lookout and site warden. Information on changes to this issue can be found in the Rule Book Briefing Leaflet (GERT8000-RBBL Iss 27).
GERT8000-HB4 Iss 2	Sep 2014	Duties of a points operator and route-setting agent - moving and securing points by hand	This handbook is for those personnel who has duties of a points operator and route-setting agent - moving and securing points by

Rule Book			
Doc No & Issue	Issue Date	Title	Synopsis
			hand. Information on changes to this issue can be found in the Rule Book Briefing Leaflet (GERT8000-RBBL Iss 27).
GERT8000-HB5 Iss 2.1	Dec 2022	Handsignalling duties	This handbook is for those personnel who carry out handsignalling duties The Rule Book has been reviewed to remove cases of gender-specific language which can be taken as an assumption that only males are involved. All references to 'pilotman' in handbook 5 have been changed to 'pilot'.
GERT8000-HB6 Iss 7	Sep 2021	General duties of an individual working alone (IWA)	This handbook is for those personnel with general duties of an individual working alone (IWA).
GERT8000-HB7 Iss 8	Sep 2021	General duties of a controller of site safety (COSS)	This handbook is for those personnel who have the general duties of a controller of site safety (COSS).
GERT8000-HB8 Iss 9	Sep 2022	IWA, COSS or PC blocking a line	You will need this handbook if you carry out the duties of a IWA, COSS or PC blocking a line.
GERT8000-HB9 Iss 8	Sep 2022	IWA or COSS setting up safe systems of work within possessions	You will need this handbook if you carry out the duties of an IWA or COSS setting up safe systems of work within possessions.
GERT8000-OTM Iss 10	Mar 2021	Working of on-track machines (OTM)	You will need this module if you carry out the duties of a driver of an on-track machine, an operator of an on-track machine, or a signaller.
GERT8000-OTM Iss 11	Sep 2023	Working of on-track machines (OTM)	You will need this module if you carry out the duties of a driver of an on-track machine, an operator of an on-track machine, or a signaller.
GERT8000-T10 Iss 6	Sep 2022	Duties of a designated person (DP) and people working on rail vehicles	You will need this module if you carry out the duties of a designated person or person working on a rail vehicle.
GERT8000-T3 Iss 11	Sep 2022	Possession of a running line for engineering work	You will need this module if you carry out the duties of a driver or signaller.

Network Rail Safety Central – Information Section

Code of Conduct

The Code of Conduct establishes some minimum standards that Network Rail expects in their supply chain. It has been developed by Network Rail's National Supply Chain, Industry bodies, and the Unions. It will be reviewed and updated by members of these same groups bi-annually. Please email queries to codeofconduct@networkrail.co.uk

[Code of Business Ethics](#) (web page)
[Modern Slavery](#) (web page)

Network Rail Safety Bulletins

In this section you'll find copies of the Network Rail safety bulletins regularly sent out to staff working on the Network Rail infrastructure. These cover a range of different safety issues and are often issued in response to a specific incident.

<https://safety.networkrail.co.uk/tools-resources/safety-bulletins/>

You can refine your search by:

Bulletin type

- Archive - Lessons Learnt
- Archive - Safety Bulletins
- Safety Advice
- Safety Alert
- Safety Bulletin
- Shared Learning

There will also be an archive of past bulletins, so you can download any that you missed, or want to read again. **Please download them for the FULL TEXT OF THE BULLETINS.**

Safety Bulletins

- [Safety Bulletin NRB23-08 – Tampering of Automatic Fire Detection System](#) July 18, 2023
- [Safety Bulletin NRB23-07 – Pierced Traction Cables](#) June 29, 2023

Safety Advice

- [Safety Advice NRA23-09 – GreenMech Woodchippers](#) August 16, 2023
- [Safety Advice NRA23-08 – Winch remote controls \(Warn Industries\)](#) August 15, 2023

Other documents

- [Environment Bulletin ENV23-03 – Change of Address – Impact to permits, licences and consents \(PLC's\)](#) July 13, 2023

Lessons Learnt / Shared Learning

Network Rail are now producing 'Lessons Learnt' publications following events which have led to Formal investigations or local investigations where significant points of learning have resulted. Network Rail believes that these lessons will be of value for all involved in the industry and not just safety professionals, they are ultimately designed to aid prevention of events of a similar nature happening again elsewhere.

[Safety Bulletins | Safety Central \(networkrail.co.uk\)](#)

Click on "Shared Learning" in the Bulletin type menu on right of screen. Type NRL23 in the search box for this year's.

Health & Wellbeing

[Health and wellbeing](#) (web page)

Risk Management

[Think RISK](#) (web page)

Resource Library

<https://safety.networkrail.co.uk/tools-resources/resource-library/>

The Resource Library holds a wealth of information.

SCO 24:7 (Supply Chain – Operations) Telephone

SCO 24:7 (formally the NSC247 and NDS24:7): call 01908 723500 or 085 65500 (internal)

SCO 24:7 operates 24 hours a day, 365 days of the year from the Quadrant in Milton Keynes. Our remit is to manage the real-time delivery of SCO products & services to our customers. This includes engineering haulage, materials, on track machines, infrastructure monitoring, seasonal treatment, HSEA reporting, site access services and lone worker monitoring.

Emergency

If there's a safety threat to you or to others such as:

- Animals, objects or people on or near the track
- Damage or fault at a level crossing
- A vehicle has hit a bridge
- A broken fence or open gate allowing access to the track

Please call Network Rail Emergency 24-hour helpline immediately: **03457 11 41 41**

To report a crime

Please contact the British Transport Police: **0800 40 50 40, 999 or Text 61016**

HSE Fatigue and Risk Index (FRI) Calculator

The Fatigue Risk Index (FRI) has been withdrawn from the HSE website. The reasons for this are:

- The software platform is an older Excel that can no longer be supported on the HSE website.
- The design of the FRI requires improvement to promote better understanding of its outputs, its limitations and its role in a Fatigue Management System.
- In its current format, there have been case of the FRI being issued in order to justify work patterns that clearly require further action to reduce fatigue-related risk.
- FRI users who have access to the FRI in its current format can continue to use it, provided you have the necessary expertise to use the tool and understand the outputs and limitations.

Following feedback, we are making the tool available, as well as how to documents, to aid with calculations.

[HSE Fatigue and Risk Index \(FRI\) Calculator](#)

Useful Links

The following pages contain other useful links and safety information from various sources which may be relevant to you.

Item	Details
Health and Safety Executive http://www.hse.gov.uk – Website	Government agency responsible for regulating risks to health and safety arising from work. HSE publications can be downloaded free in Adobe PDF format.
CIRAS Online http://www.ciras.org.uk – free access	The Confidential Incident Reporting and Analysis System Freephone number 0800 4 101 101.
Network Rail http://www.networkrail.co.uk – Website	Owner and operator of Britain's railway infrastructure.
Network Rail Standards If you have any queries re the registration form or the Network Rail Standards portal, please email: STSupplierSupport@networkrail.co.uk Network Rail Technical Drawings National Records Group Email: nrgcivils@networkrail.co.uk	from 31 August 2023, free access to Network Rail's extensive catalogue of standards and controls documentation will be via a new (interim) website. This new site will be called the Network Rail Standards Portal. If you have not already done so, please register for access to the Network Rail Standards Portal by completing this registration form as soon as you can, so that your new log in account can be set up.
Network Rail Safety Central http://safety.networkrail.co.uk – free access	The site is your one-stop shop of safety information, advice, resources and useful contacts, designed to promote consistency and best practice across the whole rail industry. The information is divided under the following sections: <ul style="list-style-type: none"> • Alerts & Campaign Material • Communication & Health • Commitment & Rules • Safety Groups • On Site Solutions • Toolbox
RSSB Close Call System www.closecallsystem.co.uk – Register for access	At the request of Network Rail and its contractors, RSSB has developed a new internet-based system that will allow the industry to centrally record and analyse 'Close Call incidents'. This is known as the Close Call System.
Rail Safety and Standards Board http://www.rssb.co.uk – Register for access to certain documents	RSSB builds industry-wide consensus and facilitates the resolution of difficult cross-industry issues. They provide knowledge, analysis, a substantial level of technical expertise, powerful information and risk management tools.
Rail Sentinel https://www.railsentinel.co.uk/ – registered companies only	Sentinel Scheme Rules The latest copy of the scheme rules can be found here: Sentinel Scheme Rules
Office of Rail and Road http://orr.gov.uk/ – free access	Independent safety and economic regulator for Britain's railways, and monitor of performance and efficiency for England's Strategic Road Network.
Rail Accident Investigation Branch http://www.raib.gov.uk/ – free access	Independent railway accident investigation organisation for the UK. It investigates railway accidents and incidents on the UK's railways to improve safety, not to establish blame.

Item	Details
<p>Railway Group Standards https://www.rssb.co.uk/standards-catalogue – free access with registration</p> <p>Rail Safety & Standards Board Enquiry Desk Phone: 020 3142 5400 Website www.rssb.co.uk</p>	<p>Purchasing Railway Group Standards A copy of the order form can be found in the forms section of the RGS Catalogue or from the RGSONLINE website stated above. You will need the following details in order to complete the form:</p> <ul style="list-style-type: none"> • Railway Group Standards code and title • Quantity • Price • Purchaser's full name, business, address and telephone number • Credit card details, cheque or purchase order number <p>Then fax or post it to Willsons Printers Limited at the address below.</p> <p>Please ensure that you include your credit card details, purchase order or a cheque made payable to Willsons Printers. Payments can also be made by BACS - please contact Willsons for company bank details. Orders received will be dispatched within five working days.</p> <p>Purchasing National Operations Publications National Operations Publications are Railway Group Standards which set out mandatory requirements for direct application in the workplace. These include:</p> <ul style="list-style-type: none"> • Modular Rule Book (GERT8000) • Working Manual for Rail Staff: Handling and Carriage of Dangerous Goods (GORM3053) • Working Manual for Rail Staff: Freight Train Operators (GORM3056) • Rule Book Forms <p>Details of these documents can be found in the sections 'Document Titles and Descriptions' for Traffic Operation and Management.</p> <p>As these documents are subject to frequent change, amendments which do not justify the reissue of the module or section of the working manual are published in GERT8001, Changes to National Operations Publications.</p> <p>Willsons Printers Limited supplies the modules and handbooks which make up the Modular Rule Book, Working Manual and Rule Book forms. You can order these documents by contacting Denise Atkinson at Willsons Printers Limited at the address below:</p> <p>Willsons Printers Limited Highlander House Cross Street, Newark Nottinghamshire, NG24 1PP Tel: 01636702334 Fax: 01636701396 http://www.willsonshop.com</p>
<p>M&EE Networking Group Codes of Practice https://www.rssb.co.uk/standards-catalogue#stakeholder-publications</p> <p>Refine results by selecting Lead Committee</p>	<p>The M&EE Networking Group is a non profit making group dedicated to the sharing of professional engineering and railway operations information and to provide a focus to the rail industry relating to operational and technical safety of plant. The group is a meeting of the professional heads of mechanical and electrical engineering and operations from infrastructure contractors, Network Rail, RSSB, the Rail Plant Association, London Underground and elected representatives from other infrastructure renewal companies, plant owners, and manufacturers/suppliers of plant and technical services.</p> <p>The M&EE Networking Group produces Codes of Practice and other documents as good practice for all members of the industry.</p>

Other Bulletins

Track Safety Alliance

A few videos of interest at the Track Safety Alliance website:

<http://www.tracksafetyalliance.co.uk/videos/65/>

Southern Shield

Everyone Home Safe Every Day

Southern Shield is a collaborative safety forum that consists of Network Rail Infrastructure Projects Southern Region and its principal contractors. There are many more useful links on their website

<https://www.southernshield.co.uk/>

- Best Practice <https://www.southernshield.co.uk/best-practice/90/>
- Safety Messages <https://www.southernshield.co.uk/safety-messages/4/>
- Health & Wellbeing <https://www.southernshield.co.uk/health-and-wellbeing/82/>
- Library <https://www.southernshield.co.uk/library/3/>

Electrical Safety Step Up

[Electrical Safety Step Up - Safety Central \(networkrail.co.uk\)](#)

- [Electrical Safety Step Up Promotional Material](#) ZIP / 26 Jan 2023
 - [Conductor Rail Equipment Scenario Film](#) MP4 / 16 Jan 2023
 - [Facilitation Guides](#) ZIP / 12 Jan 2023
 - [Our Call to Action Closing Film](#) MP4 / 4 Jan 2023
 - [OLE Scenario Film](#) MP4 / 4 Jan 2023
 - [Your Commitment to Working Safe](#) MP4 / 4 Jan 2023
 - [Andrew Haines Welcome](#) MP4 / 4 Jan 2023
 - [Electrical Safety Step Up Slide Deck – OLE No Films](#) PPTX / 4 Jan 2023
 - [Electrical Safety Step Up Slide Deck – Conductor Rail Equipment No Films](#) PPTX / 4 Jan 2023
-
- [Bryant's story](#) MP4 / 4 Jan 2023



Drugs and Alcohol standard (supplier page)

[Drugs and Alcohol standard \(supplier page\) - Safety Central \(networkrail.co.uk\)](#)

What's changing?

Our supply chain colleagues are expected to test 20% of their safety critical staff so please make sure you are familiar with the changes, and never attend work under the influence of drugs or alcohol.

- [Drugs and Alcohol standard – Line Manager Briefing Pack – Supply Chain](#) PPTX / 13 Oct 2022
- [Drugs and Alcohol standard – Change on a page \(Supply Chain\)](#) PDF / 13 Oct 2022

Miscellaneous

IMPORTANT UPDATE: SCO 24/7 Accident / Incident Reporting

The Network Rail SCO 24/7 Accident / Incident reporting system is closing on the 28th July 2023.

From Friday 28th July all safety / environmental accidents or incidents that occur on Network Rail Capital Delivery Eastern Projects should be reported to the appropriate Route Control.

Any close call that occur on Principal Contractors site should be reported via that Principal Contractors own close call reporting process.

If there are any Network Rail infrastructure faults or Network Rail close calls that need to be reported then normal reporting processes should be followed.

When contacting Route Control you will need to provide the following information:

- Your name and contact details
- The name of your employer and their contact details
- The company name of the Principal Contractor
- The project name and project number
- The location where the incident occurred
- The nature of the incidents
- Any immediate action taken
- Inform Route Control that the Principal Contractor will manage their own care plans for any injured person(s)

Network Rail Eastern Region Route Controls can be contacted on the following numbers:



East Midlands Incident Controller 1 01332 442 324 / 01332 442 362
East Midlands Incident Controller 2 01332 442 325 / 01332 442 362

East Coast South Incident Controller 01904 718 032 / 01904 718 002
East Coast Central Incident Controller 01904 718 026 / 01904 718 002
East Coast North Incident Controller 01904 718 030 / 01904 718 002

North & East Central Incident Controller 01904 718 027 / 01904 718 002
North & East North East Incident Controller 01904 718 029 / 01904 718 002
North & East West Yorkshire Incident Controller 01904 718 028 / 01904 718 002

Anglia Incident Controller Great Eastern 020 7979 3609
Anglia Incident Controller West Anglia 020 7979 3619
Anglia Incident Controller North London and Thameside 020 7979 3615

Safety or Environment Incident Occurs

STEP 1		Report to Route Control immediately
STEP 2		Within 24 hours IRIS event opened and Fast Facts produced
STEP 3		Within 7 days the level 1 investigation should be completed on IRIS

Safety Bulletin



everyone
home safe
every day

Competence Assurance of Plant Operators



Ref:	WWB23-08
Date of Issue:	15-May-2023
Location:	Buildings and Civils Western Route
Contact:	Helen.barnes@networkrail.co.uk

Overview

Two serious incidents have occurred on the 24th and 25th of April. A 25 tonne excavator toppled in a worksite compound, during a lift of a 5-tonne metal bog mat; and a telehandler toppled into a canal during a manoeuvre and less than 5 litres of biofuel was spilled this was contained and canal cleaned.

Fortunately in both incidents no one was physically injured. However both incidents involved people operating the plant who did not hold the correct current competency to do so. Both incidents are under investigation.

During Safety Conversations across the B&C portfolios, our Principal Contractors are informing the client that people are attempting to work with fraudulent competencies. In one case, a person had returned to a site, having been removed the previous day (due to poor behaviours), giving a false identity. Fortunately they were prevented from accessing sites, due to assurance checks and a robust sign-in process, to carry out work using plant.

- Discussion Points:**
1. General Point. Make sure plans and assurance checks for resources are carried out prior to operators arriving on site and checked again when operators arrive for work
 2. Have you 'taken 5' to make sure that all plant operations have been risk assessed and if changes are required to the works or the operators, assure yourself it is safe to continue
 3. How do you remind operatives on site, that although there may be a willingness for people to help colleagues, they must be competent to do so.



Part of our group of Safety Posters

Safety Alert

Safety Bulletin

Safety Advice

Shared Learning

DISTRIBUTION

<ul style="list-style-type: none"> □ All Region □ Regional Exec and All SHE Professionals 	<ul style="list-style-type: none"> □ All Wales Route □ Wales Operations □ Wales Maintenance 	<ul style="list-style-type: none"> □ All Western Route □ Western Operations □ Western Maintenance 	<ul style="list-style-type: none"> □ Capital Delivery □ DEAM / Commercial and Support Functions
---	--	--	---

W&W v0.2 02-2021

Safety Bulletin



ASBESTOS DISTURBANCE



Ref:	WWB 23-09
Date of Issue:	30th May 2023
Location:	All Region
Contact:	Michelle Boland Capital Delivery

Overview

On the 20th May 2023 contractors were deployed to carry out minor works at Hereford Signal Box.

While installing emergency lighting they unknowingly, disturbed asbestos containing materials (ACM) in the ceiling boards.

Licensed asbestos contractors subsequently undertook air quality tests, reviewed the disturbed asbestos and deemed it was safe for the signallers to operate in the signal box.

Points of note:

The Network Rail's Asbestos Risk Management System (ARMS) identified ACM in the ceiling boards. Warning labels (stickers) were not in situ on the ceiling boards to assist in identifying the ACM.

The Client has a duty to provide all pre-construction information to Contractors

Contractors should always review pre-construction information prior to commencing work.

- Discussion Points:**
- 1 If you are issuing contractors with work, what pre-construction information have you provided?
 - 2 How do you know if you work in a building containing ACM? Are warning labels (stickers) in place for known ACM?
 - 3 Where is your physical asbestos register located at your place of work?
 - 4 What are the procedures to follow if asbestos is accidentally disturbed?
 - 5 Network Rail have Mandatory asbestos awareness training, when is yours due for renewal?

Where to find more information: [Asbestos SharePoint site](#) [Asbestos Management standard \(NR/L2/CIV/168\)](#)
[Asbestos Risk Management System \(ARMS\)](#) The Asbestos Helpline telephone number is 03300085105, option 4



Part of our group of Safety Posters

Safety Alert

Safety Bulletin

Safety Advice

Shared Learning

DISTRIBUTION

<input type="checkbox"/> All Region	<input type="checkbox"/> All Wales Route	<input type="checkbox"/> All Western Route	<input type="checkbox"/> Capital Delivery
<input type="checkbox"/> Regional Exec and All SHE Professionals	<input type="checkbox"/> Wales Operations	<input type="checkbox"/> Western Operations	
	<input type="checkbox"/> Wales Maintenance	<input type="checkbox"/> Western Maintenance	<input type="checkbox"/> DEAM / Commercial and Support Functions

OFFICIAL

Safety Bulletin



everyone home safe every day

Isolation Irregularities – Test Before Earth

Issued to: Network Rail E&P Maintenance Engineers, Infrastructure Maintenance Engineers, Infrastructure Maintenance Delivery Managers, Route Infrastructure Engineer, Route Infrastructure Director and accredited OLE isolation providers
 Ref: 07-23-001 Issue 01
 Date of issue: 14th July 2023
 Location: National
 Contact: Martin O'Connor, Network Technical Head Contact Systems AC/DC, Technical Authority



Always test before applying earths or straps.

Overview/Action Required

Overview

Feedback from front line Overhead Line Equipment (OLE) staff and recent isolation irregularities have indicated that test before earth is not being consistently applied to the 25kV OLE.

As part of a recent planned isolation, the person authorised to carry out the application of earths did not have the correct written instruction to undertake the task nor did they complete a test prior to applying the earth.

Action Required

NR/L3/ELP/29987 Module 7 mandates that the Nominated Person shall issue and brief a Form STED to the person authorised to test and apply earths on their behalf. The Form STED shall state the location, number and type of earths to be applied.

Network Rail isolation process NR/L3/ELP/29987 Modules 7 and 10 mandates that before earths are applied, the OLE shall be tested at each location using a valid Live Line Indicator. This is also one of the Network Rail electrical Lifesaving Rules.

Discussion points

- Are all the Lifesaving Rules embedded as part of your electrical safety culture?
- Which Lifesaving Rules apply to each OLE work activity?
- Have you been briefed on the details contained in the Form STED?
- Do you always make sure you have a Form STED before you operate an OLE disconnector/apply an earth?
- Do you always test at each location prior to applying an earth?
- Do you record on the Form STED how many earths you have applied/removed?
- Would you be comfortable to challenge the Nominated Person if you don't receive a Form STED?
- Do you have sufficient time to undertake the task? Plans must allow sufficient time for isolations to be completed safely?
- Do you confirm that the Live Line Indicator (LLI) has a valid weekly test certificate?
- Only carry out activities that you are trained and competent to do.

Part of our group of Safety Bulletins



Our Safety Update



7 August 2023

In this week's Safety Update, you can find information on razor blades in drums, contact with live floater and the step challenge.

Razor blade holes in drums

Please be aware that people are putting razor blades in Cable drums; this could cause serious injury to those who are moving these drums. Please be on the lookout for this and any similar use of razor blades.

Learnings

- Always wear CUT5 gloves
- If anyone finds please report immediately to SHEQ Manager (Mark Luddington 07379 946 211)



OCC - Contact with Live Floater and Arc Injury

On Thursday the 14 July, at approximately 02:30, a COSS/PIC with a group of welding colleagues were undertaking thermic welding within an isolation.

While setting the first cast, excess material from L80 bowl was lifted and set aside adjacent to a live floater. The handle from the bowl then fell making contact with the live floater between the Down Fast and Up Slow at approximately 14m 25ch.

The Possession and ES Pack included diagrams with the location of live floater within the worksite. The Engineering Supervisor had not briefed the COSS/PIC on the position of any live floaters adjacent to or within the worksite nor had this been recorded on the Conductor Rail Permit (CRP).

The COSS/PIC had not briefed the working group of the position of any live floaters adjacent to or within the worksite and did not test before work commenced. The live floater had not been marked at site with ST-CRIDS (self-testing current rail indicator device) or live rail indicating devices (blue shield with a flashing light). The event was not reported at the time.

Full brief and actions can be found in the [Sussex Safety Cascade](#) slides.

Time to get stepping!



everyone fit for the future

It's back...the Southern Step Challenge.

Are you and your colleagues ready to put your best foot forward for this year's challenge?

Starting on 14 August, you, and a team of up to ten can take part in this year's challenge.

Make sure you register by 14 August and:

- Download and go to the Optima app (easily done by scanning the QR code).

Or go to [Network Rail Wellbeing](#)

- Choose to sign in and select join the single sign-on login (SSO option) and add code: 3057

Please send your feedback on the newsletter to southernregioncomms@networkrail.co.uk

Our Safety Update



7 August 2023

In this week's Safety Update, you can find information on razor blades in drums, contact with live floater and the step challenge.

Razor blade holes in drums

Please be aware that people are putting razor blades in Cable drums; this could cause serious injury to those who are moving these drums. Please be on the lookout for this and any similar use of razor blades.

Learnings

- Always wear CUT5 gloves
- If anyone finds please report immediately to SHEQ Manager (Mark Luddington 07379 946 211)



OCC - Contact with Live Floater and Arc Injury

On Thursday the 14 July, at approximately 02:30, a COSS/PIC with a group of welding colleagues were undertaking thermic welding within an isolation.

While setting the first cast, excess material from L80 bowl was lifted and set aside adjacent to a live floater. The handle from the bowl then fell making contact with the live floater between the Down Fast and Up Slow at approximately 14m 25ch.

The Possession and ES Pack included diagrams with the location of live floater within the worksite. The Engineering Supervisor had not briefed the COSS/PIC on the position of any live floaters adjacent to or within the worksite nor had this been recorded on the Conductor Rail Permit (CRP).

The COSS/PIC had not briefed the working group of the position of any live floaters adjacent to or within the worksite and did not test before work commenced. The live floater had not been marked at site with ST-CRIDS (self-testing current rail indicator device) or live rail indicating devices (blue shield with a flashing light). The event was not reported at the time.

Full brief and actions can be found in the [Sussex Safety Cascode](#) slides.

Time to get stepping!



everyone fit for the future

It's back...the Southern Step Challenge.

Are you and your colleagues ready to put your best foot forward for this year's challenge?

Starting on 14 August, you, and a team of up to ten can take part in this year's challenge.

Make sure you register by 14 August and:

- Download and go to the Optima app (easily done by scanning the QR code).

Or go to [Network Rail Wellbeing](#)

- Choose to sign in and select join the single sign-on login (SSO option) and add code: 3057

Please send your feedback on the newsletter to southernregioncomms@networkrail.co.uk

OFFICIAL



Security Bulletin

Suspicious Vehicle

Awareness

A white Ford Transit van VRN - YM55 AOS with Network Rail livery was seen in the Cardiff area on 13 August 2023.

This Ford Transit is not a Network Rail vehicle and should be reported immediately if seen.



What you should do

- If suspicious/threatening behaviour/activity is taking place ring 999 immediately
- Non - emergency call BTP - 0800 405040 or TEXT 61016 and inform the Incident Controller on 02920 920658

For further information, contact the Wales Route lead for Route Crime and Security
Andy Armstrong andy.armstrong2@networkrail.co.uk – 07701 052337



Safety Bulletin



Ref:	WWB 23-12
Date of Issue:	23-08-2023
Location:	Wales and Western
Contact:	Lisa East



Safer Streets, Happier Communities: The 20mph speed limit change in Wales.

From 17th September 2023, the speed limit in restricted roads Wales will be reduced from 30mph to 20mph (this includes roads where streetlights are placed no more than 200 yards apart and in residential and built-up areas with high pedestrian activity). The new law makes Wales the first nation in the UK to impose 20mph as the default speed limit on all restricted roads.

Why the change?

Speeding is a major contributor to road accidents and fatalities. By lowering the speed limit to 20mph the severity of potential accidents can be reduced, ensuring safer roads for everyone. Lower speeds lead to quieter streets, reducing noise pollution and contributing to a more peaceful environment. Areas with reduced speed will have improved air quality due to smoother traffic flows and a reduction in stop-and-go driving.

Did you know?

At 20mph, stopping distances are significantly shorter compared to 30mph. The crucial difference can mean the world when avoiding collisions and protecting lives. Evidence suggests that in towns and cities which have already introduced 20mph speed limits the number of road traffic accidents has declined.

Your Role Matters!

Respect the Limit: Adhere to the new 20mph limit. Remember, your cautious driving makes a significant difference.

Spread the Word: Inform your colleagues and teams about the speed limit change. Encourage responsible driving habits.

Discussion Points:

1. What positive benefits to health, safety and the environment could the change of speed limit have on us and our teams? If you have discussed any problems, what are the solutions to these problems?

2. How will you plan your and your teams journeys differently going forward?

For more information on speeding please click here - [Speeding \(sharepoint.com\)](https://sharepoint.com)



Part of our group of Safety Posters

Safety Alert

Safety Bulletin

Safety Advice

Shared Learning

- | | | | |
|--|---|---|---|
| <p>DISTRIBUTION</p> <ul style="list-style-type: none"> <input type="checkbox"/> All Region <input type="checkbox"/> Regional Exec and All SHE Professionals | <ul style="list-style-type: none"> <input type="checkbox"/> All Wales Route <input type="checkbox"/> Wales Operations <input type="checkbox"/> Wales Maintenance | <ul style="list-style-type: none"> <input type="checkbox"/> All Western Route <input type="checkbox"/> Western Operations <input type="checkbox"/> Western Maintenance | <ul style="list-style-type: none"> <input type="checkbox"/> Capital Delivery <input type="checkbox"/> DEAM / Commercial and Support Functions |
|--|---|---|---|

WSW v0.2

02-2021

Safety Advice

Action required following a serious incident



everyone home safe every day

Electric Shock During Fencing Works

Ref:	WWA 23-01
Date of Issue:	23rd August 2023
Location:	Cullompton, Devon
Contact:	Robert Warren - Head of Route SHE, Western



Overview

On Monday 17th July, work was being undertaken to replace rotten wooden fencing posts with metal (Hampton) posts, a post was driven into the ground and a pop was heard with sparks seen. The Team leader instructed everyone to step back, however one of the team on site came into contact against the fence and suffered a minor electric shock. It was identified that the post had struck a national grid buried cable (11,000v) National Grid advised that full contact with the fence would likely have caused this to be a fatal incident. Later a marker post was found in deep undergrowth and is believed to have fallen off.

Immediate Action Required:

1. Does your Pre-construction Information include buried services that have been identified and documented in your area of work?
2. Have you seen or completed a Permit to Dig? and has a cable avoidance tool(CAT) scanning has taken place prior to commencing work?
3. If you encounter buried services or are involved in a cable strike, do you know what to do? Who do you contact to get the next steps are agreed?
4. If something isn't right then you can speak up or raise a Close call. Play your part to help ensure we all get home safe everyday.



Part of our group of Safety Posters

Safety Alert

Safety Bulletin

Safety Advice

Shared Learning

DISTRIBUTION

- All Region
- Regional Exec and All SHE Professionals

- All Wales Route
- Wales Operations
- Wales Maintenance

- All Western Route
- Western Operations
- Western Maintenance

- Capital Delivery
- DEAM / Commercial and Support Functions

WS&W v0.2 02-2021

AMCO · GIFFEN



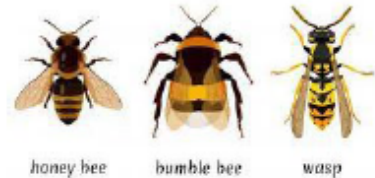

Health & Safety Tool Box Talk

HS69-TBT-01 Bee and Wasp Safety

Reason

In general bees sting to protect their hive and seldom sting when they are out foraging unless they feel threatened (like being swatted at or stepped on). On the other hand, a large number of bees or wasps foraging in one area may indicate a colony is nearby. If you intend to work in the area check for bee/wasp habitats first.

Colonies vary in behaviour over time, especially with changes in season, becoming more aggressive and easily agitated in the late summer and autumn. You may pass the same colony for weeks and then one day provoke them unexpectedly.



Look out for colonies

- Bees and Wasps nest in a variety of locations, such as pipes, holes, behind shutters, cracks and crevices and hanging from trees.
- Be alert for groups of flying bees entering or leaving an opening and listen for buzzing sounds.
- Be especially alert when climbing, digging, working outdoors and Be careful when using heavy equipment that produces sound vibrations, such as chainsaws, strimmers and pumps.!!!

If you get stung

First thing to do is remove the sting. The end of the sting is barbed and will remain stuck in the skin even if the bee is removed. Muscles in the sting allow venom to be pumped into the victim, even if it is no longer attached to the bee. Scrape the stinger out with your fingernail, the edge of a credit card or other straight edged object.



There are two kinds of reactions usually associated with bee stings & stinging insects:

1. **Local Reactions:** A local reaction is usually characterised by pain, swelling, redness, itching, and a wheal surrounding the wound made by the sting. Swelling can sometimes be locally severe. For instance, if stung on the finger, the arm may swell, even up to the elbow. Swelling such as this is common though it may be alarming. Swelling may be reduced by cooling the wound and/or taking an antihistamine. Calamine lotion may also alleviate pain
2. **Systemic, Allergic, or Life threatening Reactions:** Allergic reactions can develop anywhere on the body and may include a rash or hives, dizziness or headache, cramps, nausea, swelling not in the general area of the sting, shortness of breath or difficulty swallowing, shock and unconsciousness. If you experience any of these symptoms, seek emergency medical assistance immediately. Symptoms can begin immediately following the sting or up to 30 minutes later and might last for hours.

If you know you are allergic:

Anaphylaxis, if treated in time, usually can be reversed by epinephrine (adrenaline) injected into the body. Individuals who are aware that they are allergic to stings should carry epinephrine in either a normal syringe (sting kit) or an auto-injector (Epi-pen) at all times when working outside and communicate their allergy to a supervisor and their co-workers in case they become incapacitated. Epinephrine is only obtainable by prescription from a doctor, which is now more difficult to obtain.

Allergic reactions can happen at any time. No reaction to a previous sting does not indicate you are not allergic

Do	Don't
✓ keep escape routes in mind.	✗ put your hands where you can't see them.
✓ If you disturb a nest and are being attacked, run away.	✗ swat and wave your arms, this aggravates bees /wasps more!
✓ Use your shirt to protect your head, neck and face.	✗ pull the sting out with your fingers or tweezers as this will squeeze out more venom.
✓ scrape the stinger out with your fingernail, the edge of a credit card or other straight edged object.	
✓ when carrying an Epi-pen, ensure it is in date	



1. How should you remove a sting?



Encourage a discussion by using a real life situation or example and ask if there are any questions.



Safety | Professionalism | Innovation | Respect | Integrity | Teamwork

OFFICIAL

Safety Bulletin



everyone
home safe
every day

Parked vehicle rolled back causing minor injury and damage

Issued to: Scotland's Railway Colleagues & Principal Contractors
Ref: SRB23-13L
Date of issue: 31/08/2023
Location: Dunblane Station
Contact: [Chris Lyall, Health & Safety Manager](#)



Overview

A work vehicle was parked on a sloped street, it rolled back a short distance at low speed, and struck a work van and then a colleague. This resulted in minor injuries to their arm and leg, and damage to both vehicles.

The colleague was standing with three others who managed to move clear in time however the colleague was pushed against the van then to the ground.

The vehicle had been parked on the street for a short time with one of the rear doors open, before it started to roll back.

The vehicle has been quarantined and is currently undergoing checks to establish if the handbrake was working properly or if there were any other issues that caused the incident. An investigation is also ongoing.

Discussion Points

Is your vehicle checks, service, and MOT up to date?

Do you know how to report any issues with your work vehicle? [Click here](#) for more information.

How would you check that your vehicle is parked safely and securely before leaving it?

Always carry out pre-use vehicle checks and record them. [Click here](#) for briefing material.

Never drive a defective vehicle. Report any issues and arrange repairs.

Always take 5 and make sure your vehicle is secure before leaving it. Be aware of your surroundings.

Part of our group of Safety Bulletins

Safety Alert

Safety Bulletin

Safety Advice

Shared Learning

Other Safety Information



Safety 3-4-3 and Fleet 3-4-3

Safety 3-4-3 and Fleet 3-4-3 will be published and distributed at a later date.