

December 2022 ACS Rail Updates

Welcome to the **December 2022** edition of ACS Rail updates.

The following pages contain summaries of updates which may be relevant to you. Please brief and distribute this information to the relevant people as per your internal procedures.

The ACS Team

Content	Page
Changes to Network Rail Standards	2
Making sure you are aware of the relevant standards.....	2
Welcome to the Network Rail Standards Portal	2
New and Up-Issued Standards.....	3
Withdrawn, Closed and Superseded Documents.....	4
Emergency Changes (Previously Known as Letters of Instruction)	5
RSSB - Standards and the rail industry	6
Railway Group Standards (RGSs).....	6
Rule Book (GE/RT8000)	6
Rule Book App	6
GE/RM8000 Master Module Manual	6
Controlled Document List 03 December 2022	7
Network Rail Safety Central – Information Section	20
Code of Conduct	20
Network Rail Safety Bulletins	20
Lessons Learnt / Shared Learning.....	20
Health & Wellbeing.....	21
Risk Management	21
Resource Library.....	21
SCO 24:7 (Supply Chain – Operations) Telephone	21
Emergency.....	21
To report a crime.....	21
HSE Fatigue and Risk Index (FRI) Calculator.....	21
Useful Links	22
Other Bulletins	25
Track Safety Alliance.....	25
Southern Shield.....	25
Safety 3-4-3 and Fleet 3-4-3	31
Bridgeway Calendar 2023/24	32

BRIEFING REQUIREMENTS:

NOTE: Contractors are responsible for arranging and undertaking and recording their own Safety and Awareness Briefings in accordance with their own processes and procedures.



Changes to Network Rail Standards

Issue 126: 03rd December 2022 – 03rd March 2023

Making sure you are aware of the relevant standards

Every employee has a duty to comply with any mandatory Network Rail company standards and procedures relevant to their role. It is vital therefore that all employees are aware of which standards are relevant to their area of work, and where to find them.

Welcome to the Network Rail Standards Portal

Network Rail Standards are now made available **free of charge to all Network Rail suppliers and partner organisations via this online portal:**

https://global.ihs.com/csf_home.cfm?&csf=NR

For this access you will need to do the following:

- Create an online account by clicking My Account and selecting Create New Account.
- Search for the standard(s) that you wish to obtain and click Add to Cart
- When you have finished shopping, click on Cart then click on View Shopping Cart
- In the Membership Information section of the shopping cart, enter your Company Registration Number in the Membership# box and click the Add button

At that point, a 100% discount will be applied to your order, and you may proceed to checkout. All first-time users will need to be verified for eligibility before receiving the standard(s) ordered. This may take up to seven days. Once your eligibility has been verified you will receive an e-mail with a link to the PDF of the standard.

NOTE: Organisations with access to the online collection of Network Rail Standards delivered via IHS Markit's Engineering Workbench platform should continue to access standards via that service.

Other Information

Network Rail Standards Subscriptions

IHS Global Ltd
Phone: 01344 328000 or email
customer.support@ihs.com

Network Rail Standards & Controls Publications Manager

Neil Whitaker
Phone: 01908 782564

Network Rail Technical Drawings

National Records Group
Email: nrgcivils@networkrail.co.uk

Network Rail Standards Hard Copy Document Centre

IHS Retail
Phone: 01344 328039
Fax: 01344 328005 or email:
emeastore@ihs.com

Railway Group Standards

Rail Safety & Standards Board Enquiry Desk
Phone: 020 3142 5400 Website
www.rssb.co.uk

You must make sure that the team and the activities for which you are responsible comply with the Network Rail company standards and procedures. By doing this, you will be complying with the Network Rail Health & Safety Management System and relevant legislation.

The following pages contain summary extracts of the changes / new issue to the Network Rail Company Standards which may be relevant to you.

Standards Updates

Issue 126 - 03 December 2022 New and Up-Issued Standards

References	Title	Replaces
NR/GN/CIV/200 Issue 6	Station Design Manual	NR/GN/CIV/200 Issue 5
NR/GN/CIV/300 Issue 4	Compliance Design Manual	NR/GN/CIV/300 Issue 3
NR/L2/CIV/074 Issue 2	Design and Installation of Overhead Line Foundations	NR/L2/CIV/074 Issue 1
NR/L2/CIV/095 Issue 2	Asset Protection and Optimisation Management of Third Party Works on Network Rail Infrastructure	NR/L2/CIV/095 Issue 1
NR/L2/CIV/193 Issue 2	Standard Specification for New and Upgraded Lifts	NR/L2/CIV/193 Issue 1
NR/L2/ELP/27238 Issue 10	Maintenance Specification for Fixed Plant Equipment	NR/L2/ELP/27238 Issue 9
NR/L2/ELP/27401 Issue 2	Configuration Management and Change to Protection and Control Systems	NR/L2/ELP/27401 Issue 1
NR/L2/INF/02203 Issue 3	Controlled Publications - Issue and Receipt	NR/L2/INF/02203 Issue 2 NR/L3/INF/02204 Issue 3 NR/GN/INF/00850 Issue 4
NR/L2/MTC/MG0040 Issue 1	Management of Maintenance Process Definitions	New
NR/L2/OHS/021 Issue 4	Personal Protective Equipment (PPE)	NR/L2/OHS/021 Issue 3
NR/L2/OHS/501 Issue 6	Trackworker Protection and Warning Systems	NR/L2/OHS/501 Issue 5
NR/L2/OHS/CP0070 Issue 6	Principal Contractor Licensing Assurance (aka NR/L2/INI/CP0070)	NR/L2/INI/CP0070 Issue 5
NR/L2/P3M/102 Issue 4	Investment Decision Framework (aka NR/L2/INI/P3M/102)	NR/L2/INI/P3M/102 Issue 3
NR/L2/P3M/220 Issue 2	Project Acceleration in a Controlled Environment (PACE) - Manage Integration	NR/L2/P3M/220 Issue 1 NR/L2/P3M/223 Issue 1
NR/L2/P3M/221 Issue 2	Project Acceleration in a Controlled Environment (PACE) - Manage Scope	NR/L2/P3M/221 Issue 1
NR/L2/P3M/222 Issue 2	Project Acceleration in a Controlled Environment (PACE) - Manage Time	NR/L2/P3M/222 Issue 1
NR/L2/P3M/224 Issue 2	Project Acceleration in a Controlled Environment (PACE) - Manage Risk	NR/L2/P3M/224 Issue 1 NR/L2/P3M/107 Issue 1
NR/L2/P3M/225 Issue 2	Project Acceleration in a Controlled Environment (PACE) - Manage Assurance	NR/L2/P3M/225 Issue 1
NR/L2/SCO/310 Issue 1	Control of Movements in Depots, Yards and Associated Depot Sidings (Methods of Work)	New
NR/L2/SCO/315 Issue 1	Controls for the Management of Long Welded Rail Delivery and Recovery	NR/L2/NDS/205 Issue 2 NR/L3/NDS/305 Issue 2
NR/L2/SIG/10158 Issue 3	Specification for Signal Sighting Assessment	NR/L2/SIG/10158 Issue 2
NR/L2/SIG/11201 Issue 16	Signalling Design Handbook	NR/L2/SIG/11201 Issue 15
NR/L2/SIG/30009 Issue 23	Signalling Principles Handbook	NR/L2/SIG/30009 Issue 22 NR/L2/SIG/19609 Issue 1
NR/L2/SIG/50035 Issue 5	Competence Standard - Competence and Training in Signal and Level Crossing Engineering	NR/L2/SIG/50035 Issue 4
NR/L2/TRK/039 Issue 1	Composite Sleepers, Bearers and Longitudinal Bridge Systems	New
NR/L2/TRK/053 Issue 10	Inspection and Repair to Control the Risk of Derailment at Switches	NR/L2/TRK/053 Issue 9
NR/L2/TRK/2102 Issue 11	Design and Construction of Track	NR/L2/TRK/2102 Issue 10
NR/L3/CIV/00012 Issue 3	Management of Road Vehicle Incursions (RVI)	NR/L3/CIV/00012 Issue 2
NR/L3/CIV/194 Issue 2	Selection and Design of New and Upgraded Lifts	NR/L3/CIV/194 Issue 1
NR/L3/ELP/27241 Issue 6	Fixed Plant Work Instructions	NR/L3/ELP/27241 Issue 5
NR/L3/OPS/021 Issue 6	Weather Management Index	NR/L3/OPS/021 Issue 5
NR/L3/SCO/313 Issue 12	On-Track Machines (OTMs) Driver and Operations Standards Manual	NR/L3/SCO/313 Issue 11
NR/L3/TRK/003 Issue 41	Index of Track Engineering Forms	NR/L3/TRK/003 Issue 40
NR/L3/TRK/055 Issue 5	Work Instructions for Ultrasonic Rail Testing	NR/L3/TRK/055 Issue 4
NR/L3/TRK/1020 Issue 1	Track Hand Back for Projects: Confirming Track Is Safe for Opening at the Selected Line Speed After Projects Engineering Work	NR/L3/TRK/1017 Issue 1

Withdrawn, Closed and Superseded Documents

References	Title	Replaced by/Status
NR/GN/CIV/200 Issue 5	Station Design Manual	NR/GN/CIV/200 Issue 6
NR/GN/CIV/300 Issue 3	Compliance Design Manual	NR/GN/CIV/300 Issue 4
NR/GN/INF/00850 Issue 4	Controlled Publications - Document Control Handbook	NR/L2/INF/02203 Issue 3
NR/L2/AIF/02106 Issue 4	The Provision of Track Category and Traffic Data (formerly NR/L2/AMG/02106)	Withdrawn
NR/L2/CIV/074 Issue 1	Design and Installation of Overhead Line Foundations	NR/L2/CIV/074 Issue 2
NR/L2/CIV/095 Issue 1	Asset Protection and Optimisation Management of Third Party Works on Network Rail Infrastructure	NR/L2/CIV/095 Issue 2
NR/L2/CIV/193 Issue 1	Standard Specification for New and Upgraded Lifts	NR/L2/CIV/193 Issue 2
NR/L2/ELP/27238 Issue 9	Maintenance Specification for Fixed Plant Equipment	NR/L2/ELP/27238 Issue 10
NR/L2/ELP/27401 Issue 1	Configuration Management and Change to Protection and Control Systems	NR/L2/ELP/27401 Issue 2
NR/L2/INF/02203 Issue 2	Controlled Publications - Issue and Receipt	NR/L2/INF/02203 Issue 3
NR/L2/INI/CP0070 Issue 5	Principal Contractor Licensing Scheme (aka NR/L2/INI/CP0070)	NR/L2/OHS/CP0070 Issue 6
NR/L2/INI/P3M/102 Issue 3	Investment Decision Framework and Programme Delivery Lifecycle	NR/L2/P3M/102 Issue 4
NR/L2/NDS/205 Issue 2	Rail Delivery and Recovery Systems Overview	NR/L2/SCO/315 Issue 1
NR/L2/OHS/021 Issue 3	Personal Protective Equipment and Workwear	NR/L2/OHS/021 Issue 4
NR/L2/OHS/501 Issue 5	Trackworker Protection and Warning Systems	NR/L2/OHS/501 Issue 6
NR/L2/P3M/107 Issue 1	Contingency Management for Capital Delivery Projects, Programmes, and Portfolios	NR/L2/P3M/224 Issue 2
NR/L2/P3M/220 Issue 1	Project Acceleration in a Controlled Environment (PACE) - Manage Integration	NR/L2/P3M/220 Issue 2
NR/L2/P3M/221 Issue 1	Project Acceleration in a Controlled Environment (PACE) - Manage Scope	NR/L2/P3M/221 Issue 2
NR/L2/P3M/222 Issue 1	Project Acceleration in a Controlled Environment (PACE) - Manage Time	NR/L2/P3M/222 Issue 2
NR/L2/P3M/223 Issue 1	Project Acceleration in a Controlled Environment (PACE) - Manage Cost and Commercial	NR/L2/P3M/220 Issue 2
NR/L2/P3M/224 Issue 1	Project Acceleration in a Controlled Environment (PACE) - Manage Risk	NR/L2/P3M/224 Issue 2
NR/L2/P3M/225 Issue 1	Project Acceleration in a Controlled Environment (PACE) - Manage Assurance	NR/L2/P3M/225 Issue 2
NR/L2/SIG/10158 Issue 2	Specification for Signal Sighting Assessment	NR/L2/SIG/10158 Issue 3
NR/L2/SIG/11201 Issue 15	Signalling Design Handbook	NR/L2/SIG/11201 Issue 16
NR/L2/SIG/19609 Issue 1	Requirements for Colour Light Junction Signalling	NR/L2/SIG/30009 Issue 23
NR/L2/SIG/30009 Issue 22	Signalling Principles Handbook	NR/L2/SIG/30009 Issue 23
NR/L2/SIG/50035 Issue 4	Competence Standard - Competence and Training in Signal and Level Crossing Engineering	NR/L2/SIG/50035 Issue 5
NR/L2/TRK/053 Issue 9	Inspection and Repair to Control the Risk of Derailment at Switches	NR/L2/TRK/053 Issue 10
NR/L2/TRK/2102 Issue 10	Design and Construction of Track	NR/L2/TRK/2102 Issue 11
NR/L3/CIV/00012 Issue 2	Management of Road Vehicle Incursions (RVI)	NR/L3/CIV/00012 Issue 3
NR/L3/CIV/194 Issue 1	Selection and Design of New and Upgraded Lifts	NR/L3/CIV/194 Issue 2
NR/L3/ELP/27241 Issue 5	Fixed Plant Work Instructions	NR/L3/ELP/27241 Issue 6
NR/L3/INF/02204 Issue 3	Controlled Publications - Process and Accountabilities	NR/L2/INF/02203 Issue 3
NR/L3/NDS/305 Issue 2	Rail Delivery & Recovery	NR/L2/SCO/315 Issue 1
NR/L3/OHS/019-IP Issue 1	Planning and Delivering Safe Work - Implementation Principles for Infrastructure Projects	Withdrawn
NR/L3/OPS/021 Issue 5	Weather Management Index	NR/L3/OPS/021 Issue 6
NR/L3/SCO/313 Issue 11	On-Track Machines (OTMs) Driver and Operations Standards Manual	NR/L3/SCO/313 Issue 12
NR/L3/TRK/003 Issue 40	Index of Track Engineering Forms	NR/L3/TRK/003 Issue 41
NR/L3/TRK/055 Issue 4	Work Instructions for Ultrasonic Rail Testing	NR/L3/TRK/055 Issue 5
NR/L3/TRK/1017 Issue 1	Inspection for Raising/Removing Speed Restrictions and Inspecting the Line After Track Renewal Work	NR/L3/TRK/1020 Issue 1

Emergency Changes (Previously Known as Letters of Instruction)

To access any active Emergency Change you need to refer to its associated Network Rail Standard. **The front page of the standard will provide details of the relevant change.** When using the online service there will be an active link to each relevant change.

Reference	Title	Issue	Date
NR/BS/LI/493	Standard/control document affected: NR/L3/OPS/045 Issues 23, 24 + Mod 3.32, National Operating Procedures Index	1	20/10/2022
NR/BS/LI/492	Standard/control document affected: NR/L2/OHS/00120 Issue 6, Drugs, Alcohol and Substance Misuse in the Workplace	1	12/09/2022
NR/BS/LI/490	Standard/control document affected: NR/L3/ELP/27720 Issue 1, Test Before Touch for Overhead Line Equipment	1	30/09/2022
NR/BS/LI/489	Standard/control document affected: NR/L3/OPS/045 Issue 23, 24 + Mod 3.17, National Operating Procedures Index	1	15/09/2022
NR/BS/LI/488	Standard/control document affected: NR/L2/CTM/014 Issue 2, Competence and Training in Overhead Line Engineering	1	30/09/2022
NR/BS/LI/487	Standard/control document affected: NR/L3/CTM/306/01 Issue 1, Skills Assessment Scheme: Competence Assurance Process	1	18/07/2022
NR/BS/LI/485	Standard/control document affected: NR/L3/OPS/009 (Issue 4), Track Circuit Operating Device (T-COD) Identification of Locations for use – REPLACES NR/BS/LI/477	1	11/12/2021
NR/BS/LI/484	Standard/control document affected: NR/L3/ELP/27240 (Issue 11), Distribution Work Instructions	1	14/02/2022
NR/BS/LI/483	Standard/control document affected: NR/L3/OPS/021 Module 8 Managing The Weather - Earthworks (Issue 01) – REPLACES NR/BS/LI/474	1	05/12/2021
NR/BS/LI/482	Standard/control document affected: NR/L3/OPS/021 Module 13 Managing the Weather – Extreme Weather Response Process (Issue 01) – REPLACES NR/BS/LI/473	1	05/12/2021
NR/BS/LI/480	Standard/control document affected: NR/L3/ELP/21067 (Issue 5), Instructions for making out, issuing and cancelling high voltage Permits to Work, Sanctions for Test and Circuit State Certificates – REPLACES NR/BS/LI/456 & NR/BS/LI/461	1	11/11/2021
NR/BS/LI/478	Standard/control document affected: NR/SP/CTM/016 Issue 1, Competency & Training in Fixed Plant Engineering	1	30/07/2021
NR/BS/LI/472	Standard/control document affected: NR/L2/CIV/196 (Issue 1), Standard Specification for New and Upgraded Escalators	1	28/07/2021
NR/BS/LI/440	Standard/control document affected: NR/L2/TRK/001 (Issue 15), Inspection and Maintenance of Permanent Way	1	25/03/2020
NR/BS/LI/426	Standard/control document affected: NR/L1/CIV/032 (Issue 2), The Management of Structures SUPERSEDED BY NR/L2/CIV/032 Issue 1 - HISTORIC 04/12/2022	2	20/07/2020
NR/BS/LI/383	Standard affected: NR/L2/CTM/021 (Issue 4), Competence and Training	2	08/12/2016
NR/BS/LI/371	Standard affected: NR/L2/CIV/162 (Issue 2), Platform Extensions. Location of metal structures on Third Rail area Station Platforms	1	02/03/2016
NR/BS/LI/328	Standard affected: NR/SP/ELP/21104 (ISSUE 2), Design and Installation of Electric Track Equipment for DC Electrified Lines	1	28/03/2014
NR/BS/LI/326	Standard affected: NR/L2/OHS/050 (Issue 4), Sentinel Scheme Rules	1	16/04/2014
NR/BS/LI/306	Standard affected: NR/L1/CIV/032: The Management of Structures [Issue 2] SUPERSEDED BY NR/L2/CIV/032 Issue 1 - HISTORIC 04/12/2022	2	26/09/2014
NR/BS/LI/305	Standards Affected: NR/L2/TRK/001 Issue 6. NR/L2/TRK/2102 Issue 6. NR/L2/TRK/3038 Issue 5. NR/L2/TRK/0032 Issue 5. NR/L2/TRK/0132 Issue 6. NR/L3/TRK/3510/A01 Issue 1. NR/L3/TRK/3510/B01 Issue 1. NR/L3/TRK/1015 Issue 2	2	31/01/2014
NR/BS/LI/292	NR/L3/TRK/1010 (Issue 2), Management of responses to extreme weather conditions at structures, earthworks and other key locations	1	18/07/2013
NR/BS/LI/256	Standard affected: NR/SP/ELP/27243 (Issue 1), Specification for Signalling Power Supplies	2	24/10/2016
NR/BS/LI/217	Standards affected: NR/SP/ELP/27224 [Issue: 2] Specification for the installation of cable routes forming part of the traction distribution system - WITHDRAWN BY NR/L2/ELP/27224 Issue 3 – HISTORIC ON 03/12/2022	4	25/01/2016
NR/BS/LI/163	Standard affected: RT/CE/S/130 (Issue 1), Flash-Welded Rails: Site Welded Strings	2	01/10/2010
NR/BS/LI/154	Use of the Geismar THR542 Lightweight Stressing Equipment In Tandem. Standard affected: NR/L2/TRK/3011 (Issue 6)	1	18/01/2010
NR/BS/LI/106	Electric Points Heating - standard affected NR/L2/ELP/40045	2	01/09/2011
NR/BS/LI/101	Standard affected: RT/CE/S/077 Storage, Installation & Testing of TSR & ESR AWS	1	08/09/2008
NR/BS/LI/060	Traction electrical distribution sites with compromised earthing due to theft of cables - affected standard NR/SP/ELP/21032	1	23/11/2006
NR/BS/LI/047 - E&P	Bimold Connections on Rectifier Transformers at DC Traction Substations	1	05/05/2006
NR/BS/LI/040	650 V D.C. Traction Power Cables - Support Systems - affected standard NR/SP/ELP/27224 – WITHDRAWN BY NR/L2/ELP/27224 ISSUE 3 – HISTORIC ON 03/12/2022	1	20/12/2005
NR/BS/LI/032	Labelling of Track Isolating Switches (T.I.S)	1	17/10/2005
NR/BS/LI/028	Segregation of D.C. Track Feed Cables	1	22/08/2005

RSSB - Standards and the rail industry

Access all current (and many withdrawn) Railway Group Standards, Rail Industry Approved Codes of Practice (RACOPs), Guidance Notes (GNs) and Rail Industry Standards (RISs).

<http://www.rssb.co.uk/railway-group-standards>

Useful links:

- [Catalogues](#)
- [Latest Updates to Standards](#)
- [Using Standards](#)
- [Finding and staying up-to-date with standards](#)

Railway Group Standards (RGSs)

Mandatory requirements for the GB mainline railway system are defined in Railway Group Standards (RGSs). They facilitate the management and operation of the mainline railway as a shared system. RGSs set out technical requirements applicable to vehicles or the infrastructure, or processes applicable to transport operators.

Standards Catalogue <http://www.rssb.co.uk/railway-group-standards>

Rule Book (GE/RT8000)

The Rule Book (GE/RT8000) and other National Operations Publications are documents that contain direct instructions for railway staff.

The Rule Book is held in printed copy by over 100,000 people, and as such is probably the best known and most widely distributed in the entire RSSB catalogue. Even greater numbers of people are known to use it as a reference and information document both from the United Kingdom and abroad using the online version.

You can still order hard copies of individual standards and Rule Book modules or handbooks from Willsons External link (Tel: 01636 702334) or download them from the Railway Group Standards section of this site.

Rule Book App

Get 24/7 access to the Rule Book via your phone, tablet, desktop or laptop with the Rule Book App. It's easy to use, search, personalise and update, and you can acknowledge amendments with one touch. Find out more on our dedicated [Rule Book App page](#).

Rule Book Briefing Leaflet

[GERT8000-RBBL Iss 38.1](#)

Each issue of the Rule Book Briefing Leaflet contains a summary of the changes being introduced to GERT8000.

GE/RM8000 Master Module Manual

RSSB has produced this manual to provide end-users with access to the content of GE/RT8000 (The Rule Book) that is relevant to all roles as defined in the Rule Book Matrix published by RSSB:

[Rule Book Module Matrix](#)

[GERM8000-master-module Iss 8.1](#)

Controlled Document List 03 December 2022

Key

StdNo	Current standard
Stdno	New Standard
StdNo	Live standard pending withdrawal
StdNo	Superseded/Withdrawn

RAIL MANAGEMENT SYSTEM		
Ref. / Title	Issue No	Issue Date
Rail Management System		

GROUP STANDARDS Website: http://www.rssb.co.uk/railway-group-standards		
Ref. / Title	Issue No	Issue Date
Modular Rulebook GE/RT8000/ (See separate page for listed modules and issue dates)	-----	-----
GERM8000 Possession Workers Manual	8	09/2022
GERM8000 Possession Workers Manual	8.1	12/2022
GERM8000 Track Workers Manual	11	09/2022
GERM8000 Track Workers Manual	11.1	12/2022
GERM8000-master-module Master Module Manual	12	09/2022
GERM8000-master-module Master Module Manual	12.1	12/2022
GEGN8613 Application of human factors within safety management systems	1	03/2021
GLRT1210 AC Energy Subsystem and Interfaces to Rolling Stock Subsystem	2	12/2019
GLRT1210 AC Energy Subsystem and Interfaces to Rolling Stock Subsystem	3	12/2022
GLRT1212 DC Conductor Rail Energy Subsystem and Interfaces to Rolling Stock Subsystem	1	09/2015
GOGN3655 Guidance on Medical Fitness for Railway Safety Critical Workers	2	06/2014
RIS-1530-PLT Rail Industry Standard for Technical Requirements for On-Track Plant and their Associated Equipment and Trolleys	6	12/2015
RIS-2750-RST Supplier Assurance	1.1	12/2021
RIS-3118-TOM Incident Response Planning & Management	2	12/2019
RIS-3119-TOM Accident and Incident Investigation	3	03/2022
RIS-3279-TOM High Visibility Clothing	2	09/2019
RIS-3701-TOM Confidential Reporting System for Rail Staff	2.1	12/2019
RIS-8046-TOM Spoken Safety Critical Communications	2	12/2016
RIS-8047-TOM Reporting of Safety Related Information	2	03/2018
RIS-8070-TOM Drugs and alcohol testing for safety-critical workers	2	03/2022

LONDON UNDERGROUND (LU) STANDARDS		
Ref. / Title	Issue No	Issue Date
LUL G1163 Stations DLO - Failure Reporting Analysis & Corrective Action System (FRACAS)	A2	11/2015
LUL G1164 Making a Referral to the Drug and Alcohol Advisory and Treatment Service DAATS	A3	09/2019
LUL G1234 Incident recording, investigation and reporting	A5	05/2021
LUL G1241 Alcohol and Drugs at Work Guidelines and Information For Managers	6	07/2009
LUL G1242 Alcohol and Drugs at Work – Managers For Cause and Post Incident Check List	A4	04/2020
LUL G1249 Environmental Incident Categories	A5	07/2018
LUL G2020 Wuhan novel coronavirus	A1	01/2020
LUL G557 Electronic Incident Reporting Form (eIRF)	A5	03/2014
LUL LF29 Incident investigation & reporting or recording What you need to remember	01	n/a

LONDON UNDERGROUND (LU) STANDARDS		
Ref. / Title	Issue No	Issue Date
LUL R0350 Guidance and advice for the use of personal protective equipment	A1	01/2014
LUL R0403 Personal Protective Equipment (PPE) catalogue	1.1	01/2014
LUL S1251 Alcohol and Work; includes Written Notice 12/24/2014, 6/16/2015	A2	11/2011
LUL S1257 Drugs and Work; Includes Written Notice 01317: 12/24/2014	A2	11/2011
LUL S1538 Assurance	A17	08/2022
LUL S1548 Safety Critical Work	A7	09/2021
LUL S1552 Contract QUENSH Conditions Incorporating written notice: 05/10/2017, 05/02/2019, 16/03/2022	A18	11/2016
LUL S1601 Management Arrangements to Assure Medical Fitness	A5	01/2012
LUL S1602 Corporate Medical Standard for Personnel Requiring Safety on the Track Certification	A12	11/2022
LUL S1603 Audiometric standard for personnel requiring safety on the track certification	A8	10/2022
LUL S1604 Vision standard for personnel requiring safety on the Track Certification	A9	10/2022
LUL S1605 Providers of Medical Assessment for Track Certification and other Safety Critical Certification Purposes	A5	10/2022
LUL S1801 Competence requirements for undertaking Civil Engineering Safety Critical Work	A2	03/2022

NETWORK RAIL STANDARDS		
Ref. / Title	Issue No	Issue Date
NR/CAT/STP/001 Catalogue of Network Rail Standards	125	09/2022
PTS Handbook RT 3170	10	2020
NR/L2/AMG/1030 Working Safely in the Vicinity of Buried Services	1	12/2008
NR/GN/CIV/003 Guidance on Engineering and Architectural Assurance of Building and Civil Engineering Works	1	12/2021
NR/GN/CIV/065 Examination of Earthworks Guidance Manual	2	09/2022
NR/GN/CIV/208 Ground Investigation	1	12/2018
NR/L1/CIV/601 Managing the Highways Interface	1	12/2021
NR/L2/CIV/003 Engineering and Architectural Assurance of Building and Civil Engineering Works	7	12/2021
NR/L2/CIV/032 The Management of Structures Manual	1	12/2021
NR/L2/CIV/035 Management of Structures	2	06/2019
NR/L2/CIV/086 Management of Earthworks	11	12/2021
NR/L2/CIV/171 Examinations, Inspections and Assessments of Buildings & Architecture Assets: Structures and Fabric	3	09/2022
NR/L2/CIV/250 Landlord's Consent	1	03/2020
NR/L2/CIV/295 Scour Assessment of Bridges, Culverts and Retaining Walls	2	09/2018
NR/L2/CIV/602 Highways Interface Planning Process	1	12/2021
NR/L2/CIV/1000 Competence Management for Buildings and Civils Infrastructure	1	09/2022
NR/L3/CIV/00012 Road Vehicle Incursions: Risk Assessment of Public and Non-Public Bridge and Neighbouring Sites	2	09/2020
NR/L3/CIV/0001 Management of Road Vehicle Incursions (RVI)	3	12/2022
NR/L3/CIV/006 Structures, Tunnels and Occupational Property Examinations	10	09/2022
NR/L3/CIV/0063 Piling, Drilling, Crane, MEWP and SMPT operations adjacent to the Railway	1	12/2021
NR/L3/CIV/040 Work Instruction for the use of Protective Coating Systems	2	06/2019
NR/L3/CIV/170 Assessment of Tunnels	2	12/2021
NR/L3/CIV/185 Management of Reports of Safety Related Geotechnical Incidents	3	09/2020
NR/L3/CIV/190 Developing Extreme Weather Plans	1	12/2017
NR/L3/CIV/603 Working at the Highways Interface	1	12/2021

NETWORK RAIL STANDARDS		
Ref. / Title	Issue No	Issue Date
NR/L3/CIV/604 Highways Interface Manual	1	12/2021
NR/GN/CPR/401 Guidance on Contractual Health and Safety Requirements	1	12/2008
NR/L2/CPR/201 Supplier Qualification	2	12/2011
NR/L2/CPR/302 Supplier Qualification - Core Requirements (For PCL / POL Holders)	2	09/2011
NR/L2/CSG/STP001 Standards and Controls Management Manual	8	06/2020
NR/CS/CTM/001 Competence Management	1	12/2006
NR/L2/CTM/017 Competence and Training in Civil Engineering	1	06/2006
NR/L2/CTM/021 Competence & Training in Track Safety	4	12/2010
NR/L2/CTM/025 Competence & Training in On-Track Plant Operation & Activities	2	03/2021
NR/L2/CTM/201 Competence Management	2	03/2012
NR/L2/CTM/202 Quality Assurance in Training & Assessment	3	12/2019
NR/L2/CTM/207 Competence & Training in Planning	2	06/2012
NR/L2/CTM/209 Competence & Training in Safe System of Work Planner	1	12/2010
NR/L2/CTM/220 Competence & Training in Portable, Transportable & Mobile Plant (PTMP) Operation & Activities	2	06/2021
NR/L2/CTM/223 Competence & Training in Managing Site Safety	1	06/2011
NR/L2/ELP/21085 Earthing and Bonding on A.C. Electrified Railways	6	09/2022
NR/L2/ELP/21087 Risk Based Maintenance for Overhead Line Assets	9	06/2020
NR/L2/ELP/21088 General Maintenance Parameters for Overhead Line Electrification Equipment	4	06/2021
NR/L2/ELP/21090 OLE Seasonal Preparation Response for Extreme Weather	1	12/2020
NR/L2/ELP/23002 Specification for High Voltage AC Cables, AC Traction Earthing and Bonding Cables DC Traction Cables, Pilot Cables and Associated Accessories	1	12/2020
NR/L2/ELP/27009 Overhead Line Equipment Campaign Changes	3	03/2017
NR/L2/ELP/27023 Conductor Rail Heating Standard	1	12/2020
NR/L2/ELP/27172 Conductor Rail Guard Boarding	1	06/2021
NR/L2/ELP/27307 Management of M&EE Safety Related Event Reports	4	12/2017
NR/L2/ELP/27402 Specification for protection and control devices for electrical systems	1	12/2009
NR/L2/ELP/27715 Overhead Contact System Design Specification	3	09/2018
NR/L2/ELP/27800 Specification for 25 kV a.c. Earthing Pantographs and Interface with Vehicle (On Track Plant or Road Rail Vehicles)	1	12/2020
NR/L3/ELP/22001 Procedures and Competence Requirements for Persons Undertaking Works Near High Voltage Cables and Cable Routes	2	06/2022
NR/L3/ELP/27051 Working Instructions for d.c. Electrified Lines in the Liverpool Area	6	09/2019
NR/L3/ELP/27052 Working Instructions for D.C. Electrified Lines on the Northern City Line	7	06/2022
NR/L3/ELP/27115 Arrangements for Isolation of the Conductor Rail for Pre-Planned Possessions of the Line	4	09/2018
NR/L3/ELP/27140 Application of Short Circuits for Conductor Rail Isolations	4	03/2019
NR/L3/ELP/27171 Electrical Insulating Gloves - Replaces NR/WI/ELP/27171	3	06/2021
NR/L3/ELP/27237 Overhead Line Work Instructions	23	09/2021
NR/L3/ELP/27250 Conductor Rail Equipment Working Instructions	5	09/2022
NR/L3/ELP/27720 Test Before Touch for Overhead Line Equipment	1	09/2022
NR/L3/ELP/29987 Working on or About 25 KV AC Electrified Lines	8	09/2022
NR/L3/ELP/3091 DC Electrified Lines Working Instructions	5	09/2019

NETWORK RAIL STANDARDS		
Ref. / Title	Issue No	Issue Date
NR/L2/ENV/015 Environment and Social Minimum Requirements for Projects – Design and Construction	9	06/2021
NR/L2/ENV/115 Environment and Social Management System Requirements	1	03/2018
NR/L2/ENV/120 Waste Management	1	12/2019
NR/L2/ENV/121 Managing Environmental and Social Impact of Noise and Vibration	1	12/2019
NR/L2/ENV/122 Biodiversity	1	03/2021
NR/L2/ENV/123 Prevention of Pollution to Land and Water	1	12/2019
NR/L2/INF/02203 Controlled Publications - Issue & Receipt	2	12/2011
NR/L2/INF/02203 Controlled Publications - Issue and Receipt – Replaces: <ul style="list-style-type: none"> NR/L2/INF/02203 Issue 2 NR/L3/INF/02204 Issue 3 NR/GN/INF/00850 Issue 4 	3	12/2022
NR/L3/INF/02204 Controlled Publications - Process & Accountabilities	3	12/2011
NR/L3/INF/02226 Corporate Records Retention Schedule	3	12/2017
NR/GN/INI/001 Guidance on the Management of Door to Door Work & Travel Time	1	12/2008
NR/L2/INI/CP0070 Principal Contractor Licensing Scheme	5	06/2017
NR/L2/OHS/CP0070 Principal Contractor Licensing Assurance (aka NR/L2/INI/CP0070)	6	12/2022
NR/L2/INI/EDT/CP0091 Specification for Computer Aided Design	4	12/2018
NR/L3/INI/CP0028 Contract Requirements - Quality	3	06/2012
NR/L3/INI/CP0036 Provision of Welfare Facilities	4	08/2008
NR/L3/INV/3001 Reporting and Investigation Manual	7	09/2021
NR/GN/MTC/089 Guidance for the Exchange of Asset Data and the Continuing Maintenance of Assets Undergoing Change	1	09/2020
NR/L2/MTC/089 Arrangements for the Exchange of Asset Data and the Continuing Maintenance of Assets Undergoing Change	2	12/2018
NR/L3/MTC/CP009 COVID-19 Contingency Plan: Safe Working Practices	11	03/2022
NR/L3/MTC/EN0100 Waste Management	3	06/2012
NR/L3/MTC/EN0101 Management of Discharges to Sewers & Controlled Waters	3	06/2012
NR/L3/MTC/EN0225 Environ Management System for Infrastructure Maintenance	1	06/2012
NR/L3/MTC/EP0152 Working on or Adjacent to Conductor Rail	5	12/2011
NR/L3/MTC/MG0173 Monitoring of Spoken Safety Communications	4	09/2022
NR/L3/MTC/MG0210 Management of Maintenance Work within a Worksite to Prevent a Possession Overrun	3	06/2019
NR/L3/MTC/MG0213 Index of Standard Maintenance Forms	18	06/2021
NR/L3/MTC/RCS0216 Risk Control Manual	25	09/2022
NR/L3/MTC/RCS0216/OLE02 Risk Control Manual: Working on Red Bonds/Impedance Bonds	2	03/2012
NR/L3/MTC/SE0115 Confined Spaces Working & Entry Procedure	2	06/2008
NR/L3/MTC/SE0117 Planned Assurance Inspections and Site Surveillance	4	09/2018
NR/L3/MTC/SE0220 Planning and Delivering Safe Working at Height	2	09/2020
NR/CS/OHS/002 Policy on Working Safely	1	02/2007
NR/GN/OHS/00155 Short-term Changes in the Creation and Application of Safe Work Packs and Briefing Arrangements COVID-19 Contingency Plan (Guidance for Regions on NR/L2/OHS/019)	1	06/2020
NR/L1/OHS/052 Traumatic Incident Management	1	06/2016
NR/L2/OHS/00110 First Aid at Work	6	09/2017

NETWORK RAIL STANDARDS		
Ref. / Title	Issue No	Issue Date
NR/L2/OHS/00112 Worksafe Procedure	3	09/2020
NR/L2/OHS/00120 Drugs, Alcohol and Substance Misuse in the Workplace	6	09/2022
NR/L2/OHS/00124 Competence Specific Medical Fitness Requirements and Occupational Health Provider Requirements for Medical Assessments	3	12/2016
NR/L2/OHS/00130 Creating a Site of Work Segregated from the Railway	1	03/2022
NR/L2/OHS/003 Fatigue Risk Management	9	12/2019
NR/L2/OHS/0044 Planning and Managing Construction Work replaces NR/L3/INI/CP0044 Work Package Planning	5	12/2016
NR/L2/OHS/0047 Managing Health and Safety in Construction (Application of the Construction (Design and Management) Regulations to Network Rail)	7	06/2019
NR/L2/OHS/019 Safety of People working on or near the Line	11	09/2022
NR/L2/OHS/020 Track Visitor Permits	5	08/2008
NR/L2/OHS/021 Personal Protective Equipment and Work Wear	3	06/2009
NR/L2/OHS/021 Personal Protective Equipment (PPE)	4	12/2022
NR/L2/OHS/022 Working Safely at Height	2	03/2020
NR/L2/OHS/032 Training, Competence and Assessment in Accident and Incident Investigation	3	09/2021
NR/L2/OHS/050 Sentinel Scheme Rules	4	03/2011
NR/L2/OHS/053 Assessing Risk of Stress in the Workplace	3	03/2022
NR/L2/OHS/157 Health surveillance for silica and asbestos and the management of diagnosed occupational respiratory conditions	1	03/2017
NR/L2/OHS/501 Trackworker Protection and Warning Systems	5	09/2022
NR/L2/OHS/501 Trackworker Protection and Warning Systems	6	12/2022
NR/L3/OHS/0046 The Reporting, Investigation and Recording of Safety and Sustainable Development Events and Close Calls within Infrastructure Projects	3	06/2018
NR/L3/OHS/005 Design and Construction in a High Street Environment	3	06/2022
NR/L2/OPS/033 Recording Spoken Safety Critical Communications between Possession Management and Engineering Trains / On-Track Plant Drivers when Working in Possessions and Worksites.	3	06/2019
NR/L2/OPS/291 Railway Crime Risk Management	1	12/2019
NR/L3/OPS/0064 Delivering Work within Possessions – Replaces NR/L3/INI/CP0064	6	06/2021
NR/L3/OPS/084 Line Clear Arrangements Following Engineering Works in Axle Counter Areas – Line Clear Verification Process	6	12/2021
NR/L3/OPS/251 Unmanned Aircraft System (Drone/UAS) Operations	4	09/2021
NR/OPS/DEV/009 Network Rail: Good Practice Guide for Working at Operational Locations (Signal Boxes, Electrical Control Rooms, Controls) During COVID 19	2	06/2020
NR/GN/OTK/5000 Index of Off-Track Drawings	3	12/2021
NR/L2/OTK/5201 Lineside Vegetation Management Manual	5	12/2020
NR/GN/RMVP/0200 Infrastructure Plant Manual Guidance	2	06/2022
NR/L2/RMVP/0200 Infrastructure Plant Manual	11	06/2022
NR/L3/RMVP/0201 Calibration Work Instruction Manual Replaces NR/L3/MTC/ME0201 This standard provides the index and version control of Calibration Work Instructions for the internal calibration and comparison checking of Inspection, Measuring and Test Equipment (IMTE).	2	09/2011
NR/L2/RSE/0005 Product Design for Reliability	5	12/2020
NR/L2/RSE/070 Engineering Verification	3	03/2022
NR/L2/RSE/100 Network Rail Acceptance Panel processes	7	12/2021
NR/L1/RSK/001 Network Rail Risk Policy	3	09/2019

NETWORK RAIL STANDARDS		Issue No	Issue Date
Ref. / Title			
NR/L2/SCO/302 Supplier Qualification Requirements		1	06/2020
NR/L2/SCO/310 Control of Movements in Depots, Yards and Associated Depot Sidings (Methods of Work)		1	12/2022
NR/L3/SCO/313 On-Track Machines (OTMs) Driver and Operations Standards Manual		11	12/2021
NR/L3/SCO/313 On-Track Machines (OTMs) Driver and Operations Standards Manual		12	12/2022
NR/L3/SCO/314 Engineering Assurance for T&RS, OTM and OTP Projects		2	06/2022
NR/L3/SCO/320 Supplier Quality Assurance (SQA)		2	09/2020
NR/SIN/185 Identification and Inspection of Plain-Lined S&C		1	06/2019
NR/L2/SIG/11201 Signalling Design Handbook		15	12/2021
NR/L2/SIG/11201 Signalling Design Handbook		16	12/2022
NR/L2/SIG/14201 Signalling Risk Assessment Handbook		5	12/2020
NR/L2/SIG/30009 Signalling Principles Handbook		22	09/2022
NR/L2/SIG/30009 Signalling Principles Handbook – Replaces: <ul style="list-style-type: none"> NR/L2/SIG/30009 Issue 22 NR/L2/SIG/19609 Issue 1 		23	12/2022
NR/L2/SIG/30014 Signalling Works Testing Handbook		21	09/2022
NR/L2/SIG/50035 Competence and Training in Signal and Level Crossing Engineering		4	09/2022
NR/L2/SIG/50035 Competence Standard - Competence and Training in Signal and Level Crossing Engineering		5	12/2022
NR/L2/SIG/50040 Temporary Speed Restrictions replaces NR/L3/SIG/MG0110		1	12/2021
NR/L3/SIG/10064 General Instructions to Staff Working on S&T Equipment		11	06/2022
NR/L2/SIG/10160 Specification for Application of the IRSE Licensing Scheme	3		12/2020
NR/L3/SIG/10661 Signal Maintenance Task Intervals		23	06/2022
NR/L3/SIG/10663 Signal Maintenance Specifications		15	06/2022
NR/L3/SIG/11231 Signal Maintenance Testing Handbook		17	06/2022
NR/L3/SIG/11235 Signal Intermediate Testing Handbook		1	09/2021
NR/L3/SIGELP/50000 Safe working and maintenance on or near Signalling Power Distribution Equipment above 175 volts		4	09/2021
NR/L3/SIGELP/50001 Signalling Power Distribution Equipment above 175 Volts (Work Instructions)		5	09/2021
NR/L3/SIGELP/50002 Safe Working Practices When Working on or Near Signalling Power Distribution Equipment Above 175 Volts		1	12/2016
NR/L3/SIGELP/50003 Safe Working Practices When Working on or Near Signalling Equipment		1	03/2018
NR/L2/TEL/30067 The Transmission of Safety Related Information		2	12/2011
NR/L2/TEL/30156 Functional Requirements for Safety Related Communications Equipment for On Track Plant Working		1	12/2011
NR/L3/TEL/30181 Telecoms Maintenance Work Instructions Handbook		7	03/2022
NR/GN/TRK/7001 Index of Track Work Information Sheets (TWI)		18	06/2022
NR/L1/TRK/100 Management of Track Assets		1	03/2020
NR/L2/TRK/001 Inspection and Maintenance of Permanent Way		22	03/2022
NR/L2/TRK/4239 Track Bed Investigation, Design and Installation		2	09/2020
NR/L3/TRK/003 Index of Track Engineering Forms		40	09/2022
NR/L3/TRK/003 Index of Track Engineering Forms		41	12/2022
NR/L3/TRK/1015 Management of Basic Visual Inspection		7	03/2022
NR/L3/TRK/1020 Track Hand Back for Projects: Confirming Track Is Safe for Opening at the Selected Line Speed After Projects Engineering Work – Replaces <ul style="list-style-type: none"> NR/L3/TRK/1017 Issue 1 		1	12/2022

NETWORK RAIL STANDARDS		
Ref. / Title	Issue No	Issue Date
NR/L2/TRK/1054 Inspection and Maintenance Procedures for Crossings in Track	6	09/2022
NR/L3/TRK/3530 Track Lubricants	1	06/2012
NR/L3/TRK/7006 Creation and Application of an Emergency Speed Restriction (ESR) Design	3	09/2022
NR/L3/TRK/7013 Planning and Installation of Temporary Rail Joints	1	09/2021
NR/L2/TRK/7014 Standardised Risk Based Maintenance Regime (RBM) for the Inspection and Maintenance of the Permanent Way	2	03/2022

OTHER STANDARDS & GUIDANCE	
Ref. / Title	Reference
BS EN ISO 14001:2015	2015
BS EN ISO 9001:2015	2015
BS EN ISO 45001:2018	2018
Investigating Accidents and Incidents – HS(G)245	ISBN 9780717628278
Management of Health and Safety at Work Regulations 1999 Approved Code of Practice and guidance	ISBN 9780717624881
Managing health and safety in construction Construction (Design and Management) Regulations 2015. Guidance on Regulations	ISBN 9780717666263
Successful Health and Safety Management – HS(G)65	ISBN 9780717612765
Sentinel Scheme Rules https://info.railsentinel.co.uk/about/rules/	V4 26 March 2020 Compliance Date 26 March 2020
RTAS Rules QA Reference – National Skills Academy for Rail (nsar.co.uk)	V2.1 Effective 1 August 2022

LEGISLATION	
Ref. / Title	Reference
Bribery Act 2010	2010 c. 23
Control of Asbestos at Work Regulations 2002	2002 No. 2675
Control of Pollution (Amendment) Act 1989	1989 c. 14
Control of Pollution Act 1974	1974 c. 40
Corporate Manslaughter and Corporate Homicide Act 2007	2007 c. 19
Data Protection Act 2018	2018 c. 12
Environmental Protection Act 1990	1990 c. 43
European Union (Future Relationship) Act 2020	2020 c. 29
Health & Safety at Work etc. Act 1974	1974 c. 37
Modern Slavery Act 2015	2015 c. 30
Pollution Prevention and Control Act 1999	1999 c. 24
The Confined Spaces Regulations 1997	1997 No. 1713
The Construction (Design and Management) Regulations 2015	2015 No. 51
The Control of Asbestos at Work (Amendment) Regulations 1992	1992 No. 3068
The Control of Asbestos at Work (Amendment) Regulations 1998	1998 No. 3235
The Control of Asbestos at Work Regulations 1987	1987 No. 2115
The Control of Asbestos in the Air Regulations 1990	1990 No. 556
The Control of Asbestos Regulations 2006	2006 No. 2739
The Control of Asbestos Regulations 2012	2012 No. 632

LEGISLATION	
Ref. / Title	Reference
The Control of Lead at Work Regulations 1980	1980 No. 1248
The Control of Lead at Work Regulations 1998	1998 No. 543
The Control of Lead at Work Regulations 2002	2002 No. 2676
The Control of Noise at Work Regulations 2005	2005 No. 1643
The Control of Substances Hazardous to Health (Amendment) Regulations 2004	2004 No. 3386
The Control of Substances Hazardous to Health Regulations 2002	2002 No. 2677
The Environmental Noise, Site Waste Management Plans and Spreadable Fats etc. (Revocations and Amendments) Regulations 2013	2013 No. 2854
The Fire Precautions (Workplace) Regulations 1997	1997 No. 1840
The Fire Safety (England) Regulations 2022	2022 No. 547
The Fire Safety Act 2021 (Commencement) (England) Regulations 2022	2022 No. 544 (C. 26)
The Hazardous Waste (England and Wales) (Amendment) Regulations 2009	2009 No. 507
The Hazardous Waste (England and Wales) Regulations 2005	2005 No. 894
The Health and Safety (Consultation with Employees) Regulations 1996	1996 No. 1513
The Health and Safety (Display Screen Equipment) Regulations 1992	1992 No. 2792
The Health and Safety (First-Aid) Regulations 1981	1981 No. 917
The Health Protection (Coronavirus, Collection of Contact Details etc and Related Requirements) Regulations 2020	2020 No. 1005
The Health Protection (Coronavirus, International Travel) (England) Regulations 2020	2020 No. 568
The Health Protection (Coronavirus, Restrictions) (All Tiers) (England) Regulations 2020	2020 No. 1374
The Health Protection (Coronavirus, Restrictions) (England) (No. 3) Regulations 2020	2020 No. 750
The Health Protection (Coronavirus, Restrictions) (Local Authority Enforcement Powers and Amendment) (England) Regulations 2020	2020 No. 1375
The Health Protection (Coronavirus, Restrictions) (Self-Isolation) (England) Regulations 2020	2020 No. 1045
The Health Protection (Coronavirus, Wearing of Face Coverings in a Relevant Place) (England) Regulations 2020	2020 No. 791
The Health Protection (Notification) (Amendment) Regulations 2022	2022 No. 616
The Lifting Operations and Lifting Equipment Regulations 1998	1998 No. 2307
The Manual Handling Operations Regulations 1992	1992 No. 2793
The Personal Protective Equipment (EC Directive) Regulations 1992	1992 No. 3139
The Personal Protective Equipment at Work Regulations 1992	1992 No. 2966
The Personal Protective Equipment Regulations 2002 (Revoked)	2002 No. 1144
The Personal Protective Equipment at Work (Amendment) Regulations 2022	2022 No. 8
The Provision and Use of Work Equipment Regulations 1992	1992 No. 2932
The Provision and Use of Work Equipment Regulations 1998	1998 No. 2306
The Railways and Other Guided Transport Systems (Safety) Regulations 2006	2006 No. 599
The Regulatory Reform (Fire Safety) Order 2005	2005 No. 1541
The Reporting of Injuries, Diseases and Dangerous Occurrences Regulations 2013	2013 No. 1471
The Safety Representatives and Safety Committees Regulations 1977	1977 No. 500
The Waste Management (England and Wales) Regulations 2006	2006 No. 937
The Work in Compressed Air Regulations 1996	1996 No. 1656
The Workplace (Health, Safety and Welfare) Regulations 1992	1992 No. 3004

Controlled Documents

LEGISLATION	
Ref. / Title	Reference
Transport and Works Act 1992	1992 c. 42
Water Resources Act 1991	1991 c. 57
Wildlife and Countryside (Amendment) Act 1991	1991 c. 39
Wildlife and Countryside Act 1981	1981 c. 69

Key

StdNo	Current standard
Stdno	New Standard
StdNo	Live standard pending withdrawal
StdNo	Superseded/Withdrawn

Modular Rulebook GE/RT8000

PTS Only

In most cases only PTS handbook is required, unless one of the following applies:

1. Index, amendment module and Module *G1* to be issued to the following:

Supervisors and managers who issue publications
Staff who operate signal post replacement switches
Staff who place protection for Line Blockage or T3
Staff who secure points
Those who use tents on or near the line

2. Index and amendment module to be issued to the following:

Lookouts
People who take charge of cranes and equipment which could foul an open line
People who take charge of work on or near points
People who carry out patrolling/inspecting duties

Other competencies (IWA, COSS, PC, ES, MC, CC)

Rule Book			
Doc No & Issue	Issue Date	Title	Synopsis
GERT8000-Issue Iss 34	Dec 2021	Rule Book Module Issue History	This document contains updates to align with changes to Rule Book module issues (GERT8000).
GERT8000 Issue Iss 35	Sep 2022	Rule Book Module Issue History	This document contains updates to align with changes to Rule Book module issues (GERT8000).
GERT8000-Issue HB Iss 15	Dec 2021	Rule Book Handbook Issue History	This document contains updates to align with changes to Rule Book Handbook issues (GERT8000).
GERT8000 Issue HB Iss 16	Sep 2022	Rule Book Handbook Issue History	This document contains updates to align with changes to Rule Book Handbook issues (GERT8000).
GERT8000-RBBL Iss 38	Sep 2022	Rule Book Briefing Leaflet	Each issue of the Rule Book Briefing Leaflet contains a summary of the changes being introduced to GERT8000.
GERT8000-RBBL Iss 38.1	Dec 2022	Rule Book Briefing Leaflet	Each issue of the Rule Book Briefing Leaflet contains a summary of the changes being introduced to GERT8000. This Leaflet contains details of changes to the Rule Book (GERT8000) being published as limited change releases on 19 November 2022 and in-force December 2022. The changes are to remove gender-specific terms and replace them with gender-neutral terms.
GERT8000-Gloss Iss 5	Sep 2018	Glossary of Railway Terminology	You will need this glossary if you are issued with GERT8000.
GERT8000-Gloss Iss 6	Sep 2022	Glossary of Railway Terminology	You will need this glossary if you are issued with GERT8000.
GERT8000-AC Iss 7	Dec 2021	AC electrified lines	You will need this module if you carry out the duties of a train driver, guard, shunter, designated person (DP), signaller, crossing keeper or person in charge of sidings in AC electrified areas.
GERT8000-DC Iss 5	Dec 2021	DC electrified lines	You will need this module if you carry out the duties of a train driver, guard, shunter, designated person (DP), signaller, crossing keeper in DC electrified areas.
GERT8000-G1 Iss 9	Sep 2021	General safety responsibilities and personal track safety for non-trackworkers	You will need this module if you carry out the duties of: <ul style="list-style-type: none"> • a train driver • a guard • a shunter • a designated person (DP)

Rule Book			
Doc No & Issue	Issue Date	Title	Synopsis
			<ul style="list-style-type: none"> • a signaller • a crossing keeper • platform staff.
GERT8000-G1 Iss 9.1	Dec 2022	General safety responsibilities and personal track safety for non-trackworkers	<p>You will need this module if you carry out the duties of:</p> <ul style="list-style-type: none"> • a train driver • a guard • a shunter • a designated person (DP) • a signaller • a crossing keeper • platform staff.
GERT8000-HB1 Iss 7	Sep 2021	General duties and track safety for track workers	This handbook is for those personnel who need to go on the operational railway to carry out their duties, with the exception of a train driver, guard, shunter, signaller, crossing keeper or designated person (DP).
GERT8000-HB10 Iss 4	Sep 2015	Duties of the COSS or SWL and person in charge when using a hand trolley	You will need this handbook if you are the COSS or SWL and person in charge when using a hand trolley. This document has been updated as part of the December 2015 Rule Book Programme.
GERT8000-HB10 Iss 4.1	Dec 2022	Duties of the COSS or SWL and person in charge when using a hand trolley	<p>You will need this handbook if you are the COSS or SWL and person in charge when using a hand trolley.</p> <p>The Rule Book has been reviewed to remove cases of gender-specific language which can be taken as an assumption that only males are involved. All references to to level crossings as being 'manned' in handbook 10 have been replaced with the term 'manually-controlled'.</p>
GERT8000-HB11 Iss 9	Sep 2021	Duties of the person in charge of the possession (PICOP)	You will need this handbook if you carry out the duties of the PICOP.
GERT8000-HB11 Iss 10	Sep 2022	Duties of the person in charge of the possession (PICOP)	You will need this handbook if you carry out the duties of the PICOP.
GERT8000-HB12 Iss 8.pdf	Sep 2020	Duties of the engineering supervisor (ES) or safe work leader (SWL) in a possession	<p>You will need this handbook if you carry out the duties of the ES or SWL in a possession.</p> <p>Section 3.2 has been revised to facilitate the introduction of the flexible train arrival point (FTAP) into the Rule Book.</p> <p>Section 10.3 has been revised to include arrangements for giving up a work site with an engineering train or on-track machine standing within it. The changes are intended to allow work to be undertaken for a greater proportion of the available time within a possession.</p> <p>A new section 11 has been added to facilitate the introduction of high output protection zones into the Rule Book. The introduction of high output protection zones into the Rule Book is intended to improve track worker safety by removing the need for possession support staff to go trackside to place standard possession protection, and to result in improved productivity on each occasion that a high output train is used.</p>
GERT8000-HB12 Iss 9	Sep 2022	Duties of the engineering supervisor (ES) or safe work leader (SWL) in a possession	You will need this handbook if you carry out the duties of the ES or SWL in a possession.
GERT8000-HB13 Iss 2	Sep 2014	Duties of the person in charge of the siding possession (PICOS)	You will need this handbook if you carry out the duties of a PICOS. Information on changes to this issue can be found in the Rule Book Briefing Leaflet (GERT8000-RBBL Iss 27)
GERT8000-HB13 Iss 3	Sep 2022	Duties of the person in charge of the siding possession (PICOS)	You will need this handbook if you carry out the duties of a PICOS.
GERT8000-HB14 Iss 3	Mar 2021	Duties of the person in charge of loading and unloading rail vehicles during engineering work	You will need this handbook if you carry out the duties of the person in charge of loading and unloading rail vehicles during engineering work.
GERT8000-HB15 Iss 5	Sep 2017	Duties of the machine controller (MC) and on-track plant operator	You will need this handbook if you carry out the duties of the machine controller (MC) and on-track plant operator. This document has been updated as part of the December 2015 Rule Book Programme.
GERT8000-HB15 Iss 6	Sep 2022	Duties of the machine controller (MC) and on-track plant operator	You will need this handbook if you carry out the duties of the machine controller (MC) and on-track plant operator.
GERT8000-HB16 Iss 5	Dec 2021	AC electrified lines	This handbook is for those personnel who need to go on the operational railway in an AC electrified area to carry out their duties.

Rule Book			
Doc No & Issue	Issue Date	Title	Synopsis
GERT8000-HB17 Iss 4	Dec 2021	DC electrified lines	This handbook is for those personnel who need to go on the operational railway in an DC electrified area to carry out their duties.
GERT8000-HB18 Iss 4	Sep 2015	Duties of a Level Crossing Attendant	You will need this handbook if you carry out the duties of a level crossing attendant. This document has been updated as part of the December 2015 Rule Book Programme.
GERT8000-HB19 Iss 4.pdf	Sep 2020	Work on signalling equipment - duties of the signalling technician	You will need this handbook if you carry out the duties of a signalling technician. Section 1.5 has been revised to facilitate the introduction of high output protection zones into the Rule Book. The introduction of high output protection zones into the Rule Book is intended to improve track worker safety by removing the need for possession support staff to go trackside to place standard possession protection, and to result in improved productivity on each occasion that a high output train is used.
GERT8000-TW1 Iss 17	Dec 2022	Work on signalling equipment - duties of the signalling technician	You will need this handbook if you carry out the duties of a signalling technician. The Rule Book has been reviewed to remove cases of gender-specific language which can be taken as an assumption that only males are involved. All references to 'pilotman' in handbook 19 have been changed to 'pilot'.
GERT8000-HB2 Iss 2	Sep 2015	Instructions for track workers who use emergency protection equipment	This handbook is for those personnel who need to go on the operational railway to carry out their duties and have been trained to carry out emergency protection. It does not apply to: train drivers, guards, shunters, signallers, crossing keepers and those who act as a designated person (DP). This document has been updated as part of the December 2015 Rule Book Programme.
GERT8000-HB20 Iss 4	Sep 2021	General duties of a safe work leader (SWL) working outside a possession	You will need this handbook if you have the general duties of a safe work leader working outside a possession.
GERT8000-HB21 Iss 5	Sep 2021	Safe work leader (SWL) blocking a line	You will need this handbook if you carry out the duties of a IWA, COSS or PC blocking a line.
GERT8000-HB3 Iss 3	Sep 2014	Duties of the lookout and site warden	This handbook is for those personnel who have duties of the lookout and site warden. Information on changes to this issue can be found in the Rule Book Briefing Leaflet (GERT8000-RBBL Iss 27).
GERT8000-HB4 Iss 2	Sep 2014	Duties of a points operator and route-setting agent - moving and securing points by hand	This handbook is for those personnel who has duties of a points operator and route-setting agent - moving and securing points by hand. Information on changes to this issue can be found in the Rule Book Briefing Leaflet (GERT8000-RBBL Iss 27).
GERT8000-HB5 Iss 2	Sep 2011	Handsignalling duties	This handbook is for those who carry out handsignalling duties.
GERT8000-HB5 Iss 2.1	Dec 2022	Handsignalling duties	This handbook is for those personnel who carry out handsignalling duties. The Rule Book has been reviewed to remove cases of gender-specific language which can be taken as an assumption that only males are involved. All references to 'pilotman' in handbook 5 have been changed to 'pilot'.
GERT8000-HB6 Iss 7	Sep 2021	General duties of an individual working alone (IWA)	This handbook is for those personnel with general duties of an individual working alone (IWA).
GERT8000-HB7 Iss 8	Sep 2021	General duties of a controller of site safety (COSS)	This handbook is for those personnel who have the general duties of a controller of site safety (COSS).
GERT8000-HB8 Iss 8	Sep 2021	IWA, COSS or PC blocking a line	You will need this handbook if you carry out the duties of a IWA, COSS or PC blocking a line.
GERT8000-HB8 Iss 9	Sep 2022	IWA, COSS or PC blocking a line	You will need this handbook if you carry out the duties of a IWA, COSS or PC blocking a line.
GERT8000-HB9 Iss 7	Sep 2019	IWA or COSS setting up safe systems of work within possessions	You will need this handbook if you carry out the duties of an IWA or COSS setting up safe systems of work within possessions.
GERT8000-HB9 Iss 8	Sep 2022	IWA or COSS setting up safe systems of work within possessions	You will need this handbook if you carry out the duties of an IWA or COSS setting up safe systems of work within possessions.
GERT8000-OTM Iss 10	Mar 2021	Working of on-track machines (OTM)	You will need this module if you carry out the duties of a driver of an on-track machine, an operator of an on-track machine, or a signaller.

Rule Book			
Doc No & Issue	Issue Date	Title	Synopsis
GERT8000-T10 Iss 5	Sep 2021	Duties of a designated person (DP) and people working on rail vehicles	You will need this module if you carry out the duties of a designated person or person working on a rail vehicle.
GERT8000-T10 Iss 6	Sep 2022	Duties of a designated person (DP) and people working on rail vehicles	You will need this module if you carry out the duties of a designated person or person working on a rail vehicle.
GERT8000-T3 Iss 10	Sep 2021	Possession of a running line for engineering work	You will need this module if you carry out the duties of a driver or signaller.
GERT8000-T3 Iss 11	Sep 2022	Possession of a running line for engineering work	You will need this module if you carry out the duties of a driver or signaller.

Network Rail Safety Central – Information Section

Code of Conduct

The Code of Conduct establishes some minimum standards that Network Rail expects in their supply chain. It has been developed by Network Rail's National Supply Chain, Industry bodies, and the Unions. It will be reviewed and updated by members of these same groups bi-annually. Please email queries to codeofconduct@networkrail.co.uk

[Code of Business Ethics](#) (web page)
[Modern Slavery](#) (web page)

Network Rail Safety Bulletins

In this section you'll find copies of the Network Rail safety bulletins regularly sent out to staff working on the Network Rail infrastructure. These cover a range of different safety issues and are often issued in response to a specific incident.

<https://safety.networkrail.co.uk/tools-resources/safety-bulletins/>

The following link contains a list of Network Rail Safety Bulletins: [Safety Bulletin List Update Jan 2022](#)

You can refine your search by:

Bulletin type

- Archive - Lessons Learnt
- Archive - Safety Bulletins
- Safety Advice
- Safety Alert
- Safety Bulletin
- Shared Learning

There will also be an archive of past bulletins, so you can download any that you missed, or want to read again. **Please download them for the FULL TEXT OF THE BULLETINS.**

Safety Bulletins

- [Safety Bulletin NRB22-12 – Multiple trains in a signal section](#) November 17, 2022
- [Safety Bulletin NRB22-10 – Lifting Incident](#) October 25, 2022
- [Safety Bulletin NRB22-09 – Sudbrook Pumping Station September 28, 2022](#)

Safety Advice

- [Safety Advice NRA22-07 – Improvised Explosive Device found on track](#) September 16, 2022
- [Safety Advice NRA22-06 – Contact with OLE during vegetation removal](#) September 14, 2022

Other documents

- [Safety Alert NRX22-02 – Fall from height](#) November 10, 2022

Lessons Learnt / Shared Learning

Network Rail are now producing 'Lessons Learnt' publications following events which have led to Formal investigations or local investigations where significant points of learning have resulted. Network Rail believes that these lessons will be of value for all involved in the industry and not just safety professionals, they are ultimately designed to aid prevention of events of a similar nature happening again elsewhere.

[Safety Bulletins | Safety Central \(networkrail.co.uk\)](#)

Click on "Shared Learning" in the Bulletin type menu on right of screen. Type NRL22 in the search box for this year's.

Health & Wellbeing

[Health and wellbeing](#) (web page)

Risk Management

[Think RISK](#) (web page)

Resource Library

<https://safety.networkrail.co.uk/tools-resources/resource-library/>

The Resource Library holds a wealth of information.

SCO 24:7 (Supply Chain – Operations) Telephone

SCO 24:7 (formally the NSC247 and NDS24:7): call 01908 723500 or 085 65500 (internal)

SCO 24:7 operates 24 hours a day, 365 days of the year from the Quadrant in Milton Keynes. Our remit is to manage the real-time delivery of SCO products & services to our customers. This includes engineering haulage, materials, on track machines, infrastructure monitoring, seasonal treatment, HSEA reporting, site access services and lone worker monitoring.

Emergency

If there's a safety threat to you or to others such as:

- Animals, objects or people on or near the track
- Damage or fault at a level crossing
- A vehicle has hit a bridge
- A broken fence or open gate allowing access to the track

Please call Network Rail Emergency 24-hour helpline immediately: **03457 11 41 41**

To report a crime

Please contact the British Transport Police: **0800 40 50 40, 999 or Text 61016**

HSE Fatigue and Risk Index (FRI) Calculator

The Fatigue Risk Index (FRI) has been withdrawn from the HSE website. The reasons for this are:

- The software platform is an older Excel that can no longer be supported on the HSE website.
- The design of the FRI requires improvement to promote better understanding of its outputs, its limitations and its role in a Fatigue Management System.
- In its current format, there have been case of the FRI being issued in order to justify work patterns that clearly require further action to reduce fatigue-related risk.
- FRI users who have access to the FRI in its current format can continue to use it, provided you have the necessary expertise to use the tool and understand the outputs and limitations.

Following feedback, we are making the tool available, as well as how to documents, to aid with calculations.

[HSE Fatigue and Risk Index \(FRI\) Calculator](#)

Useful Links

The following pages contain other useful links and safety information from various sources which may be relevant to you.

Item	Details
<p>Health and Safety Executive http://www.hse.gov.uk – Website</p>	<p>Government agency responsible for regulating risks to health and safety arising from work. HSE publications can be downloaded free in Adobe PDF format.</p>
<p>CIRAS Online http://www.ciras.org.uk – free access</p>	<p>The Confidential Incident Reporting and Analysis System Freephone number 0800 4 101 101.</p>
<p>Network Rail http://www.networkrail.co.uk – Website</p>	<p>Owner and operator of Britain's railway infrastructure.</p>
<p>Network Rail Standards http://www.ihserc.com/ – subscription required</p> <p>IHS Customer Care For search queries and all other enquiries Phone: 01344 328300 or email customer.support@ihsmarkit.com</p> <p>Network Rail Standards Subscriptions IHS Markit Ltd Phone: 01344 328000</p> <p>Network Rail Standards & Controls Publications Manager Neil Whitaker Phone: 01908 782564</p> <p>Network Rail Standards Hard Copy Document Centre IHS Retail Phone: 01344 328039 Fax: 01344 328005 or email: emeastore@ihsmarkit.com</p> <p>Railway Group Standards Rail Safety & Standards Board Enquiry Desk Phone: 020 3142 5400 Website www.rssb.co.uk</p> <p>Network Rail Technical Drawings National Records Group Email: nrgcivils@networkrail.co.uk</p>	<p>All current Network Rail standards are available via the IHS website.</p> <p>You can access the new portal via the highlighted link but do be careful to claim your 100% discount when checking out!</p> <p><i>New standards portal</i> <i>Last year we held focus groups with our SME suppliers to gain a stronger understanding of how we can make it easier for them to do business with us. Our SME Acton Plan, published in November 2019, responded to these insights with a range of measures to support our SME community. These actions included our commitment to review access to our standards and control documents. These are the requirements for the operation of the rail network and delivery of infrastructure maintenance and enhancements.</i></p> <p><i>I am pleased to announce that this has resulted in the launch of a new portal which will make our standards freely available to the supply chain. Instructions on how to register can be seen on the portal home page. Please do not hesitate to contact us with your feedback via SupplierCommunications@networkrail.co.uk.</i></p> <p><i>This initiative also supports our Open for Business programme which encourages our suppliers to submit challenges to our standards to reduce complexity and costs.</i></p> <p><i>If you do have any questions as a result of these changes, please contact your local Network Rail representative or email suppliercommunications@networkrail.co.uk</i></p>
<p>Network Rail Safety Central http://safety.networkrail.co.uk – free access</p>	<p>The site is your one-stop shop of safety information, advice, resources and useful contacts, designed to promote consistency and best practice across the whole rail industry. The information is divided under the following sections:</p> <ul style="list-style-type: none"> • Alerts & Campaign Material • Communication & Health • Commitment & Rules • Safety Groups • On Site Solutions • Toolbox

Item	Details
<p>RSSB Close Call System www.closecallsystem.co.uk – Register for access</p>	<p>At the request of Network Rail and its contractors, RSSB has developed a new internet-based system that will allow the industry to centrally record and analyse 'Close Call incidents'. This is known as the Close Call System.</p>
<p>Rail Safety and Standards Board http://www.rssb.co.uk – free access</p>	<p>RSSB builds industry-wide consensus and facilitates the resolution of difficult cross-industry issues. They provide knowledge, analysis, a substantial level of technical expertise, powerful information and risk management tools.</p>
<p>Railway Group Standards https://www.rssb.co.uk/standards-catalogue – free access with registration</p> <p>Rail Safety & Standards Board Enquiry Desk Phone: 020 3142 5400 Website www.rssb.co.uk</p>	<p>Purchasing Railway Group Standards A copy of the order form can be found in the forms section of the RGS Catalogue or from the RGSONLINE website stated above. You will need the following details in order to complete the form:</p> <ul style="list-style-type: none"> • Railway Group Standards code and title • Quantity • Price • Purchaser's full name, business, address and telephone number • Credit card details, cheque or purchase order number <p>Then fax or post it to Willsons Printers Limited at the address below.</p> <p>Please ensure that you include your credit card details, purchase order or a cheque made payable to Willsons Printers. Payments can also be made by BACS - please contact Willsons for company bank details. Orders received will be dispatched within five working days.</p> <p>Purchasing National Operations Publications National Operations Publications are Railway Group Standards which set out mandatory requirements for direct application in the workplace. These include:</p> <ul style="list-style-type: none"> • Modular Rule Book (GERT8000) • Working Manual for Rail Staff: Handling and Carriage of Dangerous Goods (GORM3053) • Working Manual for Rail Staff: Freight Train Operators (GORM3056) • Rule Book Forms <p>Details of these documents can be found in the sections 'Document Titles and Descriptions' for Traffic Operation and Management.</p> <p>As these documents are subject to frequent change, amendments which do not justify the reissue of the module or section of the working manual are published in GERT8001, Changes to National Operations Publications.</p> <p>Willsons Printers Limited supplies the modules and handbooks which make up the Modular Rule Book, Working Manual and Rule Book forms. You can order these documents by contacting Denise Atkinson at Willsons Printers Limited at the address below:</p> <p>Willsons Printers Limited Highlander House Cross Street, Newark Nottinghamshire, NG24 1PP Tel: 01636702334 Fax: 01636701396 http://www.willsonshop.com</p>

Useful Links

Item	Details
<p>M&EE Networking Group Codes of Practice https://www.rssb.co.uk/standards-catalogue#stakeholder-publications</p> <p>Refine results by selecting Lead Committee</p>	<p>The M&EE Networking Group is a non profit making group dedicated to the sharing of professional engineering and railway operations information and to provide a focus to the rail industry relating to operational and technical safety of plant. The group is a meeting of the professional heads of mechanical and electrical engineering and operations from infrastructure contractors, Network Rail, RSSB, the Rail Plant Association, London Underground and elected representatives from other infrastructure renewal companies, plant owners, and manufacturers/suppliers of plant and technical services.</p> <p>The M&EE Networking Group produces Codes of Practice and other documents as good practice for all members of the industry.</p>
<p>Rail Sentinel https://www.railsentinel.co.uk/ – registered companies only</p>	<p>Sentinel Scheme Rules The latest copy of the scheme rules can be found here: Sentinel Scheme Rules</p>
<p>Office of Rail and Road http://orr.gov.uk/ – free access</p>	<p>Independent safety and economic regulator for Britain's railways, and monitor of performance and efficiency for England's Strategic Road Network.</p>
<p>Rail Accident Investigation Branch http://www.raib.gov.uk/ – free access</p>	<p>Independent railway accident investigation organisation for the UK. It investigates railway accidents and incidents on the UK's railways to improve safety, not to establish blame.</p>

Other Bulletins

Track Safety Alliance

A few videos of interest at the Track Safety Alliance website:

<http://www.tracksafetyalliance.co.uk/videos/65/>

Southern Shield

Everyone Home Safe Every Day

Southern Shield is a collaborative safety forum that consists of Network Rail Infrastructure Projects Southern Region and its principal contractors. There are many more useful links on their website

<https://www.southernshield.co.uk/>

- Best Practice <https://www.southernshield.co.uk/best-practice/90/>
- Safety Messages <https://www.southernshield.co.uk/safety-messages/4/>
- Health & Wellbeing <https://www.southernshield.co.uk/health-and-wellbeing/82/>
- Library <https://www.southernshield.co.uk/library/3/>

OFFICIAL

Safety Bulletin



everyone
home safe
every day

Workforce Accident Yoker Depot, Glasgow

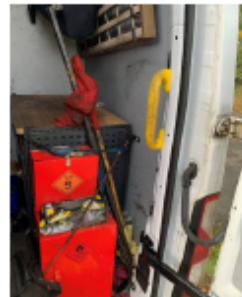
Issued to: Scotland's Railway
Colleagues and Principal
Contractors

Ref: SRB 22-11L

Date of issue: 7th November 2022

Location: Yoker Depot, Glasgow

Contact: [William Gibson, Workforce
Health, Safety and
Environment Advisor](#)



Overview

On the afternoon of 28 October 2022, a colleague was accessing the rear of a van. On opening the rear door a pinch bar fell towards them.

The injured party was struck on the face by the pinch bar.

The pinch bar had not been secured in the rear of the van.

This unsecured bar could have also caused damage within the vehicle to other tools and equipment.

For further advice and guidance please check out the [Driving Safety](#) page.

Discussion Points

Do you always carry out pre-use vehicle checks, in particular a check on any unsecured items within the rear of your vehicle?

What would you do if you believed an unsecured item could introduce a safety risk?

Do you always use locking straps, or any other devices, when transporting items in a vehicle?

Always check within the rear of your vehicle to ensure no items are left unsecured.

Always challenge unsafe conditions.

Never ignore any unsafe conditions.

Part of our group
of Safety Bulletins

Safety
Alert

Safety
Bulletin

Safety
Advice

Shared
Learning

Safety Advice

Action required following a serious incident



Unsafe Transportation of Detonators

Ref:	WWA22-44
Date of Issue:	September 2022
Location:	Wales & Western Region
Contact:	Janice Mitchell-Rose 07514 315002 Shrewsbury DU WHSEA



Overview

On Wednesday 7 September 2022, a Network Rail (NR) Track Section Manager was travelling home along the A49 Southbound when he noticed a NR Detonator Container in the roadside kerb area. Upon further inspection, the container was full of detonators. This could have resulted in a serious incident if the detonators had been damaged by travelling vehicles or picked up by a member of the general public and misused.

Immediate discussion points:

1. What is the correct method to store and transport detonators?
2. If detonators are lost, stolen or unaccounted for, do you know who to report this to?
3. What is the expiry date for a detonator?
4. What is the maximum amount of detonators that can be carried in a NR vehicle?
5. What is the strap on a detonator made of?

Useful standards

How to use detonators - [NR/GN/TRK/7001/TW13G127](#)
 Storage, transport and use of detonators - [NR/L3/MTC/RCS0216/GA16](#)
 Security and Storage of Detonators - [NR/L3/OPS/045/4.17](#)



Part of our group of Safety Posters

Safety Alert

Safety Bulletin

Safety Advice

Shared Learning

DISTRIBUTION

- All Region
- Regional Exec and All SHE Professionals

- All Wales Route
- Wales Operations
- Wales Maintenance

- All Western Route
- Western Operations
- Western Maintenance
- Capital Delivery
- DEAM / Commercial and Support Functions

WSW v0.2
02-2021

Safety Bulletin



Vehicle fell onto track



Ref:	WWB22-42
Date of Issue:	30/08/2022
Location:	Paddington Station
Contact:	Adam Thorne, HSEA 07732 643155

Overview

A Mitie operative was driving a tug, carrying waste bins, from the station concourse towards the waste area, via platform 1. It was on the designated driving route well away from the platform edge. CCTV footage appears to indicate that the operative may have momentarily fallen asleep causing the operator, and the vehicle, to veer onto the track, beyond the buffer stop. The operative suffered minor bruising but was sent to hospital as a precaution. The vehicle had minor damage.

An investigation is currently being undertaken.

- Discussion Points:**
1. How do you manage fatigue?
 2. How do you assure yourself that there are robust task risk controls and that this is followed when work is undertaken?
 3. How do you ensure separation between vehicles and the railway?



Part of our group of Safety Posters

Safety Alert

Safety Bulletin

Safety Advice

Shared Learning

DISTRIBUTION

<input type="checkbox"/> All Region	<input type="checkbox"/> All Wales Route	<input type="checkbox"/> All Western Route	<input type="checkbox"/> Capital Delivery
<input type="checkbox"/> Regional Exec and AllSHE Professionals	<input type="checkbox"/> Wales Operations	<input type="checkbox"/> Western Operations	
	<input type="checkbox"/> Wales Maintenance	<input type="checkbox"/> Western Maintenance	<input type="checkbox"/> DEAM / Commercial and Support Functions

WSW v0.2 02-2021

SIEMENS

Audience: Siemens Mobility Limited, Rail Infrastructure

FF/017/2022

Fast Facts Alert

Subject: De-Vegetation Leg Injury – Hedge Trimmer

On the 30th August 2022 at approx. 1400 hours a team were undertaking de-vegetation works on the Port Talbot West 2 Re-Signalling Project.

The team were working to clear vegetation from a fence line close to a railway access point in good weather conditions. The IP was using a hedge trimmer (shown right) at the time of the event. While carrying out the task, the tool struck a galvanised fence post causing it to kick back suddenly and strike the IP on the upper left thigh causing a large cut.

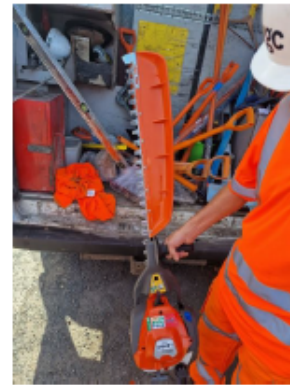
On further inspection of the injury, the team realised it's potential seriousness and immediately took the IP to the nearest Hospital where he was kept in overnight and into the next day for treatment.

All De-Veg activities are on hold on the Project, in the Region and for Siemens Rail Infrastructure nationally until otherwise advised.

The team are applauded for their swift actions.

A full investigation is currently underway and any learning outcomes will be shared once complete.

#reflecthonestly - an opportunity for transparency, lessons learnt, event findings, sharing, improvements.



Discussion Points

1. When planning a task is there a safer method that could be used? (i.e. consider machine mounted or other mechanical means)
2. Has a thorough inspection of the area been carried out to uncover any potential hidden hazards?
3. Is there additional specific PPE that could be used for the task?
4. How are we checking the competency of those carrying out the task?
5. Is there adequate time to prepare documentation for the task and adequate time for approval of documents?
6. Do you know your emergency arrangements?

Chippenham projects: Port Talbot West 2 Re-Signalling
 Paul Chesman, Delivery Director
 Laura Elton, Project Manager
 Craig Summerhill, Author

For more information about this report please contact craig.summerhill@siemens.com



Produced By EHS Department
 Siemens Mobility Limited, Rail Infrastructure
 Any queries please contact your local EHS Specialist

Restricted © Siemens Mobility Limited 2021. All Rights Reserved.
 Document is UNCONTROLLED when downloaded or printed.

UKI-RI-HS-TM-006
 July 2021 Issue 5



Safety Alert

Safe installation of surface laid cables

15 August 2022

Background information

During planned maintenance activities such as vegetation clearance, a number of incidents have been reported involving surface laid cables.



Cables laid in this manner present:

- A slip / trip hazard to the workforce, and / or members of the public seeking refuge
- An increased risk of damage leading to loss of essential services such as CCTV monitoring our network
- A risk of damage to plant & equipment

Raising the Bar 9 guidance states that:

Duct – Temporary surface cables should be sleeved in purple ducting for protection and visibility and;
 Raised – where possible, that ducting should be raised off the ground using boundary fence lines, stakes, existing VRS etc.



Actions

This is a for action safety alert requiring a response via HART to one of the two actions below.

1. Each project or scheme is required to record on HART, with evidence, confirmation that temporary surface laid cables have been installed as per [RtB 9 Utility Avoidance](#) or;
2. Where this has not been achieved, provide a plan of how associated risks will be managed.

The closing date for responses is 30 September 2022. Responses will be collated after this date, and will inform future client safety assurance activities.

If you have any queries about this safety alert information announcement or any other safety announcement then please contact HealthSafety&Wellbeingteam@nationalhighways.co.uk

NHa302



Other Safety Information



Safety 3-4-3 and Fleet 3-4-3

Safety 3-4-3 and Fleet 3-4-3 will be published and distributed at a later date.



POSSESSION MANAGEMENT



AC ISOLATIONS



DC ISOLATIONS



RAIL TRAINING & ASSESSMENT



TOPOGRAPHICAL & UTILITIES



MONITORING



BIM



UNMANNED AERIAL VEHICLE

Bridgeway House
2 Riverside Way
Nottingham
NG2 1DP

0115 919 1111

enquiries@bridgeway-consulting.co.uk

www.bridgeway-consulting.co.uk

JANUARY

P	WK	Sa	Su	Mo	Tu	We	Th	Fr
10	40		1	2	3	4	5	6
11	41	7	8	9	10	11	12	13
11	42	14	15	16	17	18	19	20
11	43	21	22	23	24	25	26	27
11	44	28	29	30	31			

FEBRUARY

P	WK	Sa	Su	Mo	Tu	We	Th	Fr
11	44					1	2	3
12	45	4	5	6	7	8	9	10
12	46	11	12	13	14	15	16	17
12	47	18	19	20	21	22	23	24
12	48	25	26	27	28			

MARCH

P	WK	Sa	Su	Mo	Tu	We	Th	Fr
12	48					1	2	3
13	49	4	5	6	7	8	9	10
13	50	11	12	13	14	15	16	17
13	51	18	19	20	21	22	23	24
13	52	25	26	27	28	29	30	31

APRIL

P	WK	Sa	Su	Mo	Tu	We	Th	Fr
1	1	1	2	3	4	5	6	7
1	2	8	9	10	11	12	13	14
1	3	15	16	17	18	19	20	21
1	4	22	23	24	25	26	27	28
2	5	29	30					

MAY

P	WK	Sa	Su	Mo	Tu	We	Th	Fr
2	5			1	2	3	4	5
2	6	6	7	8	9	10	11	12
2	7	13	14	15	16	17	18	19
2	8	20	21	22	23	24	25	26
3	9	27	28	29	30	31		

JUNE

P	WK	Sa	Su	Mo	Tu	We	Th	Fr
3	9					1	2	3
3	10	3	4	5	6	7	8	9
3	11	10	11	12	13	14	15	16
3	12	17	18	19	20	21	22	23
4	13	24	25	26	27	28	29	30

JULY

P	WK	Sa	Su	Mo	Tu	We	Th	Fr
4	14	1	2	3	4	5	6	7
4	15	8	9	10	11	12	13	14
4	16	15	16	17	18	19	20	21
5	17	22	23	24	25	26	27	28
5	18	29	30	31				

AUGUST

P	WK	Sa	Su	Mo	Tu	We	Th	Fr
5	18				1	2	3	4
5	19	5	6	7	8	9	10	11
5	20	12	13	14	15	16	17	18
6	21	19	20	21	22	23	24	25
6	22	26	27	28	29	30	31	

SEPTEMBER

P	WK	Sa	Su	Mo	Tu	We	Th	Fr
6	22							1
6	23	2	3	4	5	6	7	8
6	24	9	10	11	12	13	14	15
7	25	16	17	18	19	20	21	22
7	26	23	24	25	26	27	28	29
7	27	30						

OCTOBER

P	WK	Sa	Su	Mo	Tu	We	Th	Fr
7	27		1	2	3	4	5	6
7	28	7	8	9	10	11	12	13
8	29	14	15	16	17	18	19	20
8	30	21	22	23	24	25	26	27
8	31	28	29	30	31			

NOVEMBER

P	WK	Sa	Su	Mo	Tu	We	Th	Fr
8	31					1	2	3
8	32	4	5	6	7	8	9	10
9	33	11	12	13	14	15	16	17
9	34	18	19	20	21	22	23	24
9	35	25	26	27	28	29	30	

DECEMBER

P	WK	Sa	Su	Mo	Tu	We	Th	Fr
9	35							1
9	36	2	3	4	5	6	7	8
10	37	9	10	11	12	13	14	15
10	38	16	17	18	19	20	21	22
10	39	23	24	25	26	27	28	29
10	40	30	31					

JANUARY 2024

P	WK	Sa	Su	Mo	Tu	We	Th	Fr
10	40			1	2	3	4	5
11	41	6	7	8	9	10	11	12
11	42	13	14	15	16	17	18	19
11	43	20	21	22	23	24	25	26
11	44	27	28	29	30	31		

FEBRUARY

P	WK	Sa	Su	Mo	Tu	We	Th	Fr
11	44					1	2	3
12	45	3	4	5	6	7	8	9
12	46	10	11	12	13	14	15	16
12	47	17	18	19	20	21	22	23
12	48	24	25	26	27	28	29	

MARCH

P	WK	Sa	Su	Mo	Tu	We	Th	Fr
12	48							1
13	49	2	3	4	5	6	7	8
13	50	9	10	11	12	13	14	15
13	51	16	17	18	19	20	21	22
13	52	23	24	25	26	27	28	29
13	1	30	31					

APRIL

P	WK	Sa	Su	Mo	Tu	We	Th	Fr
1	1			1	2	3	4	5
1	2	6	7	8	9	10	11	12
1	3	13	14	15	16	17	18	19
1	4	20	21	22	23	24	25	26
2	5	27	28	29	30			

Network Rail period end

Bank Holiday (England and Wales)



PERMANENT WAY



SIGNALLING



CONFINED SPACES



STRUCTURES EXAMINATIONS



ROPE ACCESS



DIVING



WINDOW SAMPLING



ROTARY DRILLING



SLOPE DRILLING



ASSURANCE & COMPLIANCE SERVICES