

# June 2022 ACS Rail Updates

Welcome to the **June 2022** edition of ACS Rail updates.

The following pages contain summaries of updates which may be relevant to you. Please brief and distribute this information to the relevant people as per your internal procedures.

The ACS Team

Content	Page
<b>Changes to Network Rail Standards</b>	<b>2</b>
Making sure you are aware of the relevant standards.....	2
Welcome to the Network Rail Standards Portal .....	2
New and Up-Issued Standards.....	3
Withdrawn, Closed and Superseded Documents.....	4
Emergency Changes (Previously Known as Letters of Instruction) .....	5
<b>RSSB - Standards and the rail industry</b>	<b>7</b>
Railway Group Standards (RGSs).....	7
Rule Book (GE/RT8000) .....	7
Rule Book App.....	7
GE/RM8000 Master Module Manual .....	7
<b>Controlled Document List 05 March 2022</b>	<b>8</b>
<b>Network Rail Safety Central – Information Section</b>	<b>19</b>
Code of Conduct .....	19
Network Rail Safety Bulletins .....	19
Lessons Learnt / Shared Learning.....	19
Health & Wellbeing.....	20
Risk Management .....	20
Safety Films .....	<b>Error! Bookmark not defined.</b>
Resource Library.....	20
SCO 24:7 (Supply Chain – Operations) Telephone .....	20
Emergency.....	20
To report a crime.....	20
HSE Fatigue and Risk Index (FRI) Calculator.....	20
Coronavirus (COVID -19) .....	<b>Error! Bookmark not defined.</b>
<b>Useful Links</b>	<b>21</b>
<b>Other Bulletins</b>	<b>24</b>
Track Safety Alliance.....	24
Southern Shield.....	24
<b>Safety 3-4-3 and Fleet 3-4-3</b>	<b>37</b>

## BRIEFING REQUIREMENTS:

**NOTE:** Contractors are responsible for arranging and undertaking and recording their own Safety and Awareness Briefings in accordance with their own processes and procedures.



## Changes to Network Rail Standards

Issue 124: 04<sup>th</sup> June 2022 – 02<sup>nd</sup> September 2022

### Making sure you are aware of the relevant standards

Every employee has a duty to comply with any mandatory Network Rail company standards and procedures relevant to their role. It is vital therefore that all employees are aware of which standards are relevant to their area of work, and where to find them.

### Welcome to the Network Rail Standards Portal

**Network Rail Standards are now made available free of charge to all Network Rail suppliers and partner organisations via this online portal:**

[https://global.ihs.com/csf\\_home.cfm?&csf=NR](https://global.ihs.com/csf_home.cfm?&csf=NR)

For this access you will need to do the following:

- Create an online account by clicking My Account and selecting Create New Account.
- Search for the standard(s) that you wish to obtain and click Add to Cart
- When you have finished shopping, click on Cart then click on View Shopping Cart
- In the Membership Information section of the shopping cart, enter your Company Registration Number in the Membership# box and click the Add button

At that point, a 100% discount will be applied to your order, and you may proceed to checkout. All first-time users will need to be verified for eligibility before receiving the standard(s) ordered. This may take up to seven days. Once your eligibility has been verified you will receive an e-mail with a link to the PDF of the standard.

**NOTE:** Organisations with access to the online collection of Network Rail Standards delivered via IHS Markit's Engineering Workbench platform should continue to access standards via that service.

### Other Information

#### Network Rail Standards Subscriptions

IHS Global Ltd  
Phone: 01344 328000 or email  
[customer.support@ihs.com](mailto:customer.support@ihs.com)

#### Network Rail Standards & Controls Publications Manager

Neil Whitaker  
Phone: 01908 782564

#### Network Rail Technical Drawings

National Records Group  
Email: [nrgcivils@networkrail.co.uk](mailto:nrgcivils@networkrail.co.uk)

#### Network Rail Standards Hard Copy Document Centre

IHS Retail  
Phone: 01344 328039  
Fax: 01344 328005 or email:  
[emeastore@ihs.com](mailto:emeastore@ihs.com)

#### Railway Group Standards

Rail Safety & Standards Board Enquiry Desk  
Phone: 020 3142 5400 Website  
[www.rssb.co.uk](http://www.rssb.co.uk)

You must make sure that the team and the activities for which you are responsible comply with the Network Rail company standards and procedures. By doing this, you will be complying with the Network Rail Health & Safety Management System and relevant legislation.

**The following pages contain summary extracts of the changes / new issue to the Network Rail Company Standards which may be relevant to you.**

# Standards Updates

## Issue 124 - 04 June 2022 New and Up-Issued Standards

References	Title	Replaced by/Status
NR/GN/RMVP/0200 Issue 2	Infrastructure Plant Manual Guidance	NR/GN/RMVP/0200 Issue 1
NR/GN/SIG/19054 Issue 3	SSI Technicians' Manual	NR/GN/SIG/19054 Issue 2
NR/GN/SIG/CAT005 Issue 57	Index of Network Rail Documents Relating to Signalling and Communications Equipment	NR/GN/SIG/CAT005 Issue 56
NR/GN/TRK/7001 Issue 18	Index of Track Work Information Sheets (TWI)	NR/GN/TRK/7001 Issue 17
NR/L2/ELP/27238 Issue 9	Maintenance Specification for Fixed Plant Equipment	NR/L2/ELP/27238 Issue 8
NR/L2/ELP/40045 Issue 7	Electric Points Heating	NR/L2/ELP/40045 Issue 6
NR/L2/HAM/02201 Issue 6	Management of the Risk Arising from Deferred Renewals	NR/L2/HAM/02201 Issue 5
NR/L2/OHS/00127 Issue 2	Road Fleet Compliance	NR/L2/OHS/00127 Issue 1
NR/L2/RMVP/0200 Issue 11	Infrastructure Plant Manual	NR/L3/RSE/0074 Issue 1
NR/L2/SIG/30014 Issue 20	Signalling Works Testing Handbook	NR/L2/SIG/30014 Issue 19
NR/L2/SIG/30017 Issue 3	Requirements for Level Crossings	NR/L2/SIG/30017 Issue 2
NR/L2/SIG/50035 Issue 3	Competence Standard – Competence and Training in Signal and Level Crossing Engineering	NR/L2/SIG/50035 Issue 2
NR/L2/TRK/018 Issue 2	Dynamic Track Stabiliser (DTS) – Operation, Principles and Requirements of Use	RT/CE/P/018 Issue 1
NR/L2/TRK/6001 Issue 3	Management of Track Problem Statements and the Track Refurbishment and Renewal Work Bank	NR/L2/TRK/6001 Issue 2 NR/L3/TRK/6001 Issue 2
NR/L2/TRK/7007 Issue 1	Track Information Bulletins	New
NR/L2/XNG/30020 Issue 2	Level Crossings Design Handbook	NR/L2/XNG/30020 Issue 1 NR/L2/SIG/30015 Issue 1
NR/L3/CIV/151 Issue 7	Application of Standard Designs and Details for Building and Civil Engineering Works	NR/L3/CIV/151 Issue 6
NR/L3/ELP/22001 Issue 2	Procedures and Competence Requirements for Persons Undertaking Works Near High Voltage Cables and Cable Routes	NR/L3/ELP/22001 Issue 1
NR/L3/ELP/27052 Issue 7	Working Instructions for D.C. Electrified Lines on the Northern City Line	NR/L3/ELP/27052 Issue 6
NR/L3/ELP/29987 Issue 7	Working on or About 25kV A.C. Electrified Lines	NR/L3/ELP/29987 Issue 6
NR/L3/MTC/ME0300 Issue 2	Mobile Maintenance Train Operational Procedures	NR/L3/MTC/ME0300 Issue 2
NR/L3/MTC/RCS0216 Issue 24	Risk Control Manual	NR/L3/MTC/RCS0216 Issue 23
NR/L3/OHS/005 Issue 3	Design and Construction in a High Street Environment	NR/L3/OHS/005 Issue 2
NR/L3/OPS/045 Issue 23	National Operating Procedures Index	NR/L3/OPS/045 Issue 22
NR/L3/RSE/0074 Issue 2	Project Advice Note (PAN) Process (Formerly NR/L3/INI/CP0074)	NR/L3/INI/CP0074 Issue 1
NR/L3/SCO/314 Issue 2	Engineering Assurance for T&RS, OTM and OTP Projects	NR/L3/SCO/314 Issue 1
NR/L3/SIG/10064 Issue 11	General Instructions to Staff Working on S&T Equipment	NR/L3/SIG/10064 Issue 10
NR/L3/SIG/10661 Issue 23	Signalling Maintenance Task Intervals	NR/L3/SIG/10661 Issue 22
NR/L3/SIG/10663 Issue 15	Signal Maintenance Specifications	NR/L3/SIG/10663 Issue 14
NR/L3/SIG/10665 Issue 22	Reliability Centred Maintenance of Signalling Equipment	NR/L3/SIG/10665 Issue 21
NR/L3/SIG/11231 Issue 17	Signal Maintenance Testing Handbook	NR/L3/SIG/11231 Issue 16
NR/L3/SIG/11303 Issue 9	Signalling Installation	NR/L3/SIG/11303 Issue 8
NR/L3/TEL/0092 Issue 6	Process for the Application and Implementation of Planned Works Activities Across the Telecom Bearer, Circuits, and Systems	NR/L3/TEL/0092 Issue 5
NR/L3/TEL/30066 Issue 1	Energisation of Fixed Radio Frequency Transmitter Systems	NR/L3/TEL/31103 Issue 3
NR/L3/TEL/30175 Issue 2	Ethernet Services Commissioning Tests	NR/L3/TEL/30175 Issue 1
NR/L3/TEL/30187 Issue 1	RSIT, Telecommunications, Signalling and E&P Firewall Configuration	New
NR/L3/TRK/003 Issue 39	Index of Track Engineering Forms	NR/L3/TRK/003 Issue 38

## Withdrawn, Closed and Superseded Documents

References	Title	Replaced by/Status
NR/GN/RMVP/0200 Issue 1	Infrastructure Plant Manual Guidance	NR/GN/RMVP/0200 Issue 2
NR/GN/SIG/19054 Issue 2	SSI Technicians' Manual	NR/GN/SIG/19054 Issue 3
NR/GN/SIG/CAT005 Issue 56	Index of Network Rail Documents Relating to Signalling and Communications Equipment	NR/GN/SIG/CAT005 Issue 57
NR/GN/TRK/7001 Issue 17	Index of Track Work Information Sheets	NR/GN/TRK/7001 Issue 18
NR/L2/ELP/27238 Issue 8	Maintenance Specification for Fixed Plant Equipment	NR/L2/ELP/27238 Issue 9
NR/L2/ELP/40045 Issue 6	Electric Points Heating	NR/L2/ELP/40045 Issue 7
NR/L2/HAM/02201 Issue 5	Management of the Risk Arising from Deferred Renewals	NR/L2/HAM/02201 Issue 6
NR/L2/OHS/00127 Issue 1	Road Fleet Compliance	NR/L2/OHS/00127 Issue 2
NR/L2/RMVP/0200 Issue 10	Infrastructure Plant Manual	NR/L2/RMVP/0200 Issue 11
NR/L2/SIG/30014 Issue 19	Signalling Works Testing Handbook	NR/L2/SIG/30014 Issue 20
NR/L2/SIG/30015 Issue 1	Specification for Station, Footpath, Bridleway, and User Worked Level Crossings	NR/L2/XNG/30020 Issue 2
NR/L2/SIG/30017 Issue 2	Requirements for Level Crossings	NR/L2/SIG/30017 Issue 3
NR/L2/SIG/50035 Issue 2	Competence Standard – Competence and Training in Signal and Level Crossing Engineering	NR/L2/SIG/50035 Issue 3
NR/L2/TRK/6001 Issue 2	Renewals Workbank Management	NR/L2/TRK/6001 Issue 3
NR/L2/XNG/30020 Issue 1	Level Crossings Design Handbook	NR/L2/XNG/30020 Issue 2
NR/L3/CIV/151 Issue 6	Engineering Assurance of Standard Designs and Details for Building and Civil Engineering Works	NR/L3/CIV/151 Issue 7
NR/L3/CTM/307 Issue 1	Advanced Apprenticeship Scheme and Foundation Degree (Part-Time) Programme Administration	Withdrawn
NR/L3/ELP/22001 Issue 1	Procedure and Competence Requirements for Persons Undertaking Works in the Vicinity of High Voltage Cables	NR/L3/ELP/22001 Issue 2
NR/L3/ELP/27052 Issue 6	Working Instructions for D.C. Electrified Lines on the Northern City Line	NR/L3/ELP/27052 Issue 7
NR/L3/ELP/29987 Issue 6	Working on or About 25kV A.C. Electrified Lines	NR/L3/ELP/29987 Issue 7
NR/L3/INI/CP0074 Issue 1	Project Advice Note (PAN) Process	NR/L3/RSE/0074 Issue 2
NR/L3/INI/CP0074/F0030 Issue 31	PAN (Project Advice Note) Register	NR/L3/RSE/0074/F0030 Issue 32
NR/L3/MTC/ME0300 Issue 1	Mobile Maintenance Train Operational Procedures	NR/L3/MTC/ME0300 Issue 2
NR/L3/MTC/RCS0216 Issue 23	Risk Control Manual	NR/L3/MTC/RCS0216 Issue 24
NR/L3/OHS/005 Issue 2	Design and Construction in a High Street Environment	NR/L3/OHS/005 Issue 3
NR/L3/OPS/045 Issue 22	National Operating Procedures Index	NR/L3/OPS/045 Issue 23
NR/L3/SCO/314 Issue 1	Engineering Assurance for T&RS, OTM and OTP Projects	NR/L3/SCO/314 Issue 2
NR/L3/SIG/10064 Issue 10	General Instructions to Staff Working on S&T Equipment	NR/L3/SIG/10064 Issue 11
NR/L3/SIG/10661 Issue 22	Signalling Maintenance Task Intervals	NR/L3/SIG/10661 Issue 23
NR/L3/SIG/10663 Issue 14	Signal Maintenance Specifications	NR/L3/SIG/10663 Issue 15
NR/L3/SIG/10665 Issue 21	Reliability Centred Maintenance of Signalling Equipment	NR/L3/SIG/10665 Issue 22
NR/L3/SIG/11231 Issue 16	Signal Maintenance Testing Handbook	NR/L3/SIG/11231 Issue 17
NR/L3/SIG/11303 Issue 8	Signalling Installation	NR/L3/SIG/11303 Issue 9
NR/L3/TEL/0092 Issue 5	Process for the Disconnection and at Risk Processes for Telecoms Bearer Circuits and Systems	NR/L3/TEL/0092 Issue 6
NR/L3/TEL/30175 Issue 1	Ethernet Services Commissioning Tests	NR/L3/TEL/30175 Issue 2
NR/L3/TEL/31103 Issue 3	Energisation of Commercial and Operational Radio Antenna Systems	Withdrawn
NR/L3/TRK/003 Issue 38	Index of Track Engineering Forms	NR/L3/TRK/003 Issue 39
NR/L3/TRK/6001 Issue 2	Management of a Problem Statement	NR/L2/TRK/6001 Issue 3
RT/CE/P/018 Issue 1	Requirements for the Operation of the Dynamic Track Stabiliser on or Adjacent to Structures	NR/L2/TRK/018 Issue 2

## Emergency Changes (Previously Known as Letters of Instruction)

To access any active Emergency Change you need to refer to its associated Network Rail Standard. The front page of the standard will provide details of the relevant change. When using the online service there will be an active link to each relevant change.

Reference	Title	Issue	Date
NR/BS/LI/485	Standard/control document affected: NR/L3/OPS/009 (Issue 4), Track Circuit Operating Device (T-COD) Identification of Locations for use – REPLACES NR/BS/LI/477	1	11/12/2021
NR/BS/LI/484	Standard/control document affected: NR/L3/ELP/27240 (Issue 11), Distribution Work Instructions	1	14/02/2022
NR/BS/LI/483	Standard/control document affected: NR/L3/OPS/021 Module 8 Managing The Weather - Earthworks (Issue 01) – REPLACES NR/BS/LI/474	1	05/12/2021
NR/BS/LI/482	Standard/control document affected: NR/L3/OPS/021 Module 13 Managing the Weather – Extreme Weather Response Process (Issue 01) – REPLACES NR/BS/LI/473	1	05/12/2021
NR/BS/LI/480	Standard/control document affected: NR/L3/ELP/21067 (Issue 5), Instructions for Making Out, Issuing and Cancelling High Voltage Permits to Work, Sanctions for Test and Circuit State Certificates – REPLACES NR/BS/LI/456 & NR/BS/LI/461	1	11/11/2021
NR/BS/LI/478	Standard/control document affected: NR/SP/CTM/016 Issue 1, Competency & Training in Fixed Plant Engineering	1	30/07/2021
NR/BS/LI/472	Standard/control document affected: NR/L2/CIV/196 (Issue 1), Standard Specification for New and Upgraded Escalators	1	28/07/2021
NR/BS/LI/470	Standard/control document affected: NR/SP/ELP/21060 (Issue 2), Issue of Safety Documentation for Work on 650/750 V dc Apparatus – HISTORIC 04/03/2022	1	19/04/2021
NR/BS/LI/468	Standard/control document affected: NR/L3/ELP/27241 (Issue 4), Fixed Plant Work Instructions – HISTORIC 26/03/2022	1	25/03/2021
NR/BS/LI/467	Standard/control document affected: NR/L2/ELP/27238 (Issue 7), Maintenance Specification for Fixed Plant Equipment – HISTORIC ON 26/03/2022	1	25/03/2021
NR/BS/LI/466	Standard/control document affected: NR/L2/ELP/21088 (Issue 4), General Maintenance Parameters for Overhead Line Electrification Equipment – HISTORIC 25/03/2022	1	25/03/2021
NR/BS/LI/465	Standard/control document affected: NR/SP/ELP/27224 (Issue 2), Specification for the Installation of Cable Routes Forming Part of the Traction Distribution System – HISTORIC 01/03/2022	1	01/03/2021
NR/BS/LI/464	Standard/control document affected: NR/L3/ELP/27240 (Issue 11), Distribution Work Instructions. HISTORIC 08/03/2022	1	08/03/2021
NR/BS/LI/442	Standard/control document affected: NR/L2/TRK/1054 (Issue 5), Inspection of Cast, Welded and Fabricated Crossings in The Track	1	25/03/2020
NR/BS/LI/441	Standard/control document affected: NR/L2/TRK/053 (Issue 9), Inspection and Repair to Control the Risk of Derailment at Switches	1	25/03/2020
NR/BS/LI/440	Standard/control document affected: NR/L2/TRK/001 (Issue 15), Inspection and Maintenance of Permanent Way	1	25/03/2020
NR/BS/LI/426	Standard/control document affected: NR/L1/CIV/032 (Issue 2), The Management of Structures SUPERSEDED BY NR/L2/CIV/032 Issue 1 - HISTORIC 04/12/2022	2	20/07/2020
NR/BS/LI/383	Standard affected: NR/L2/CTM/021 (Issue 4), Competence and Training	2	08/12/2016
NR/BS/LI/371	Standard affected: NR/L2/CIV/162 (Issue 2), Platform Extensions. Location of Metal Structures on Third Rail Area Station Platforms	1	02/03/2016
NR/BS/LI/347	Standard affected: NR/L2/CTM/028 (Issue 2), Competence and Training – SUPERSEDED BY NR/L2/ELP/CTM028 ISSUE 3 – HISTORIC 04/06/2022	1	16/01/2015
NR/BS/LI/342	Standard affected: NR/SP/ELP/21028 (Issue 3), Specification for ancillary wiring of electrical distribution equipment on A.C. and D.C. electrified lines. SUPERSEDED BY NR/L2/ELP/21028 Issue 4 – HISTORIC 05/03/2022	1	13/04/2016
NR/BS/LI/331	Requirements for Parapet Heights on Over Bridge And Footbridge Structures Spanning Overhead Line Electrification Equipment – HISTORIC 04/12/2021	3	18/12/2020
NR/BS/LI/328	Standard affected: NR/SP/ELP/21104 (Issue 2), Design and Installation of Electric Track Equipment for DC Electrified Lines	1	28/03/2014
NR/BS/LI/326	Standard affected: NR/L2/OHS/050 (Issue 4), Sentinel Scheme Rules	1	16/04/2014
NR/BS/LI/306	Standard affected: NR/L1/CIV/032: The Management of Structures [Issue 2] SUPERSEDED BY NR/L2/CIV/032 Issue 1 - HISTORIC 04/12/2022	2	26/09/2014
NR/BS/LI/305	Standards Affected: NR/L2/TRK/001 Issue 6. NR/L2/TRK/2102 Issue 6. NR/L2/TRK/3038 Issue 5. NR/L2/TRK/0032 Issue 5. NR/L2/TRK/0132 Issue 6. NR/L3/TRK/3510/A01 Issue 1. NR/L3/TRK/3510/B01 Issue 1. NR/L3/TRK/1015 Issue 2	2	31/01/2014
NR/BS/LI/292	Standards Affected: NR/L3/TRK/1010 (Issue 2), Management of Responses to Extreme Weather Conditions at Structures, Earthworks and other Key Locations	1	18/07/2013
NR/BS/LI/256	Standard affected: NR/SP/ELP/27243 (Issue 1), Specification for Signalling Power Supplies	2	24/10/2016
NR/BS/LI/217	Standards affected: NR/SP/ELP/27224 [Issue: 2] Specification for the Installation of Cable Routes Forming Part of the Traction Distribution System	4	25/01/2016
NR/BS/LI/163	Standard affected: RT/CE/S/130 (Issue 1), Flash-Welded Rails: Site Welded Strings	2	01/10/2010
NR/BS/LI/154	Standard affected: NR/L2/TRK/3011 (Issue 6) Use of the Geismar THR542 Lightweight Stressing Equipment In Tandem.	1	18/01/2010
NR/BS/LI/106	Standard affected NR/L2/ELP/40045 - Electric Points Heating	2	01/09/2011
NR/BS/LI/101	Standard affected: RT/CE/S/077 - Storage, Installation & Testing of TSR & ESR AWS	1	08/09/2008
NR/BS/LI/091	Use of CEMBRE Rail Web Connection Systems on DC Conductor Rail - standard affected NR/GN/ELP/27020 – WITHDRAWN BY NR/CRE/005. HISTORIC ON 28/02/2022	1	27/05/2008

# Standards Updates



Reference	Title	Issue	Date
NR/BS/LI/061	Dangerous Incident Notification: 11kV indoor switchgear type YSF6 manufactured by Yorkshire Switchgear WITHDRAWN BY NR/L2/ELP/23001 ISSUE 1 – HISTORIC ON 06/03/2022	1	23/11/2006
NR/BS/LI/060	Standard affected: NR/SP/ELP/21032 - Traction electrical distribution sites with compromised earthing due to theft of cables	1	23/11/2006
NR/BS/LI/047 - E&P	Bimold Connections on Rectifier Transformers at DC Traction Substations	1	05/05/2006
NR/BS/LI/040	Standard affected: NR/SP/ELP/27224 - 650 V D.C. Traction Power Cables - Support Systems	1	20/12/2005
NR/BS/LI/032	Labelling of Track Isolating Switches (T.I.S)	1	17/10/2005
NR/BS/LI/028	Segregation of D.C. Track Feed Cables	1	22/08/2005
NR/BS/LI/025	Paralleling of EDFE Supply Points New Cross - Croydon. Wimbledon. Northfleet: Restrictions – HISTORIC 28/03/2022	3	07/01/2008

## RSSB - Standards and the rail industry

Access all current (and many withdrawn) Railway Group Standards, Rail Industry Approved Codes of Practice (RACOPs), Guidance Notes (GNs) and Rail Industry Standards (RISs).

<http://www.rssb.co.uk/railway-group-standards>

Useful links:

- [Catalogues](#)
- [Latest Updates to Standards](#)
- [Using Standards](#)
- [Finding and staying up-to-date with standards](#)

### Railway Group Standards (RGSs)

Mandatory requirements for the GB mainline railway system are defined in Railway Group Standards (RGSs). They facilitate the management and operation of the mainline railway as a shared system. RGSs set out technical requirements applicable to vehicles or the infrastructure, or processes applicable to transport operators.

Standards Catalogue <http://www.rssb.co.uk/railway-group-standards>

### Rule Book (GE/RT8000)

The Rule Book (GE/RT8000) and other National Operations Publications are documents that contain direct instructions for railway staff.

The Rule Book is held in printed copy by over 100,000 people, and as such is probably the best known and most widely distributed in the entire RSSB catalogue. Even greater numbers of people are known to use it as a reference and information document both from the United Kingdom and abroad using the online version.

You can still order hard copies of individual standards and Rule Book modules or handbooks from Willsons External link (Tel: 01636 702334) or download them from the Railway Group Standards section of this site.

### Rule Book App

Get 24/7 access to the Rule Book via your phone, tablet, desktop or laptop with the Rule Book App. It's easy to use, search, personalise and update, and you can acknowledge amendments with one touch. Find out more on our dedicated [Rule Book App page](#).

### Rule Book Briefing Leaflet

[GERT8000-RBBL Iss 37](#)

Each issue of the Rule Book Briefing Leaflet contains a summary of the changes being introduced to GERT8000.

### GE/RM8000 Master Module Manual

RSSB has produced this manual to provide end-users with access to the content of GE/RT8000 (The Rule Book) that is relevant to all roles as defined in the Rule Book Matrix published by RSSB:

[Rule Book Module Matrix](#)

[GERM8000-master-module Iss 11.1](#)

Issued 05/03/2022

## Controlled Document List 04 June 2022

### Key

StdNo	Current standard
Stdno	New Standard
StdNo	Live standard pending withdrawal
StdNo	Superseded/Withdrawn

RAIL MANAGEMENT SYSTEM		
Ref. / Title	Issue No	Issue Date
Rail Management System		

GROUP STANDARDS		Website: <a href="http://www.rspb.co.uk/railway-group-standards">http://www.rspb.co.uk/railway-group-standards</a>	
Ref. / Title	Issue No	Issue Date	
Modular Rulebook GE/RT8000/ (See separate page for listed modules and issue dates)	-----	-----	
GERM8000 Possession Workers Manual	7	09/2021	
GERM8000 Track Workers Manual	10	12/2021	
GERM8000 Track Workers Manual	10.1	03/2022	
GERM8000-master-module Master Module Manual	11	12/2021	
GERM8000-master-module Master Module Manual	11.1	03/2022	
GEGN8613 Application of human factors within safety management systems	1	03/2021	
GLRT1210 AC Energy Subsystem and Interfaces to Rolling Stock Subsystem	2	12/2019	
GLRT1212 DC Conductor Rail Energy Subsystem and Interfaces to Rolling Stock Subsystem	1	09/2015	
GOGN3655 Guidance on Medical Fitness for Railway Safety Critical Workers	2	06/2014	
RIS-1530-PLT Rail Industry Standard for Technical Requirements for On-Track Plant and their Associated Equipment and Trolleys	6	12/2015	
RIS-2750-RST Supplier Assurance	1.1	12/2021	
RIS-3118-TOM Incident Response Planning & Management	2	12/2019	
RIS-3119-TOM Accident and Incident Investigation	3	03/2022	
RIS-3279-TOM High Visibility Clothing	2	09/2019	
RIS-3701-TOM Confidential Reporting System for Rail Staff	2.1	12/2019	
RIS-8046-TOM Spoken Safety Critical Communications	2	12/2016	
RIS-8047-TOM Reporting of Safety Related Information	2	03/2018	
RIS-8070-TOM Drugs and alcohol testing for safety-critical workers	2	03/2022	

LONDON UNDERGROUND (LU) STANDARDS		
Ref. / Title	Issue No	Issue Date
LUL G1163 Stations DLO - Failure Reporting Analysis & Corrective Action System (FRACAS)	A2	11/2015
LUL G1164 Making a Referral to the Drug and Alcohol Advisory and Treatment Service DAATS	A3	09/2019
LUL G1234 Incident recording, investigation and reporting	A5	05/2021
LUL G1241 Alcohol and Drugs at Work Guidelines and Information For Managers	6	07/2009
LUL G1242 Alcohol and Drugs at Work – Managers For Cause and Post Incident Check List	A4	04/2020
LUL G1249 Environmental Incident Categories	A5	07/2018
LUL G2020 Wuhan novel coronavirus	A1	01/2020
LUL G557 Electronic Incident Reporting Form (eIRF)	A5	03/2014
LUL LF29 Incident investigation & reporting or recording What you need to remember	01	n/a
LUL R0350 Guidance and advice for the use of personal protective equipment	A1	01/2014
LUL R0403 Personal Protective Equipment (PPE) catalogue	1.1	01/2014
LUL S1251 Alcohol and Work; includes Written Notice 12/24/2014, 6/16/2015	A2	11/2011
LUL S1257 Drugs and Work; Includes Written Notice 01317: 12/24/2014	A2	11/2011



# Controlled Documents



LONDON UNDERGROUND (LU) STANDARDS		
Ref. / Title	Issue No	Issue Date
LUL S1538 Assurance	A16	04/2020
LUL S1548 Safety Critical Work	A7	09/2021
LUL S1552 Contract QUENSH Conditions Incorporating written notice: 10/05/2017, 02/05/2019	A18	11/2016
LUL S1601 Management Arrangements to Assure Medical Fitness	A5	01/2012
LUL S1801 Competence requirements for undertaking Civil Engineering Safety Critical Work	A1	12/2015
LUL S1801 Competence requirements for undertaking Civil Engineering Safety Critical Work	A2	03/2022
LUL TE-HBS-0017 Managing competence and training - Superseded by: No Replacement	A1 Cat 3	02/1995

NETWORK RAIL STANDARDS		
Ref. / Title	Issue No	Issue Date
NR/CAT/STP/001 Catalogue of Network Rail Standards	124	06/2022
PTS Handbook RT 3170	10	2020
NR/L2/AMG/1030 Working Safely in the Vicinity of Buried Services	1	12/2008
NR/GN/CIV/003 Guidance on Engineering and Architectural Assurance of Building and Civil Engineering Works	1	12/2021
NR/GN/CIV/065 Examination of Earthworks Guidance Manual	1	06/2021
NR/GN/CIV/208 Ground Investigation	1	12/2018
NR/L1/CIV/601 Managing the Highways Interface	1	12/2021
NR/L2/CIV/003 Engineering and Architectural Assurance of Building and Civil Engineering Works	7	12/2021
NR/L2/CIV/032 The Management of Structures Manual	1	12/2021
NR/L2/CIV/035 Management of Structures	2	06/2019
NR/L2/CIV/086 Management of Earthworks	11	12/2021
NR/L2/CIV/250 Landlord's Consent	1	03/2020
NR/L2/CIV/295 Scour Assessment of Bridges, Culverts and Retaining Walls	2	09/2018
NR/L2/CIV/602 Highways Interface Planning Process	1	12/2021
NR/L3/CIV/00012 Road Vehicle Incursions: Risk Assessment of Public and Non-Public Bridge and Neighbouring Sites	2	09/2020
NR/L3/CIV/006 Handbook for the Examination of Structures	9	09/2019
NR/L3/CIV/0063 Piling, Drilling, Crane, MEWP and SMPT operations adjacent to the Railway	1	12/2021
NR/L3/CIV/040 Work Instruction for the use of Protective Coating Systems	2	06/2019
NR/L3/CIV/170 Assessment of Tunnels	2	12/2021
NR/L3/CIV/185 Management of Reports of Safety Related Geotechnical Incidents	3	09/2020
NR/L3/CIV/190 Developing Extreme Weather Plans	1	12/2017
NR/L3/CIV/603 Working at the Highways Interface	1	12/2021
NR/L3/CIV/604 Highways Interface Manual	1	12/2021
NR/GN/CPR/401 Guidance on Contractual Health and Safety Requirements	1	12/2008
NR/L2/CPR/201 Supplier Qualification	2	12/2011
NR/L2/CPR/302 Supplier Qualification - Core Requirements (For PCL / POL Holders)	2	09/2011
NR/L2/CSG/STP001 Standards and Controls Management Manual	8	06/2020
NR/CS/CTM/001 Competence Management	1	12/2006
NR/L2/CTM/017 Competence and Training in Civil Engineering	1	06/2006

# Controlled Documents



NETWORK RAIL STANDARDS		
Ref. / Title	Issue No	Issue Date
<b>NR/L2/CTM/021</b> Competence & Training in Track Safety	4	12/2010
<b>NR/L2/CTM/025</b> Competence & Training in On-Track Plant Operation & Activities	2	03/2021
<b>NR/L2/CTM/201</b> Competence Management	2	03/2012
<b>NR/L2/CTM/202</b> Quality Assurance in Training & Assessment	3	12/2019
<b>NR/L2/CTM/207</b> Competence & Training in Planning	2	06/2012
<b>NR/L2/CTM/209</b> Competence & Training in Safe System of Work Planner	1	12/2010
<b>NR/L2/CTM/220</b> Competence & Training in Portable, Transportable & Mobile Plant (PTMP) Operation & Activities	2	06/2021
<b>NR/L2/CTM/223</b> Competence & Training in Managing Site Safety	1	06/2011
<b>NR/L2/ELP/21085</b> Earthing and Bonding on A.C. Electrified Railways	5	12/2021
<b>NR/L2/ELP/21087</b> Risk Based Maintenance for Overhead Line Assets	9	06/2020
<b>NR/L2/ELP/21088</b> General Maintenance Parameters for Overhead Line Electrification Equipment	4	06/2021
<b>NR/L2/ELP/21090</b> OLE Seasonal Preparation Response for Extreme Weather	1	12/2020
<b>NR/L2/ELP/23002</b> Specification for High Voltage AC Cables, AC Traction Earthing and Bonding Cables DC Traction Cables, Pilot Cables and Associated Accessories	1	12/2020
<b>NR/L2/ELP/27009</b> Overhead Line Equipment Campaign Changes	3	03/2017
<b>NR/L2/ELP/27023</b> Conductor Rail Heating Standard	1	12/2020
<b>NR/L2/ELP/27172</b> Conductor Rail Guard Boarding	1	06/2021
<b>NR/L2/ELP/27307</b> Management of M&EE Safety Related Event Reports	4	12/2017
<b>NR/L2/ELP/27402</b> Specification for protection and control devices for electrical systems	1	12/2009
<b>NR/L2/ELP/27715 Overhead Contact System Design Specification</b>	3	09/2018
<b>NR/L2/ELP/27800 Specification for 25 kV a.c. Earthing Pantographs and Interface with Vehicle (On Track Plant or Road Rail Vehicles)</b>	1	12/2020
<b>NR/L3/ELP/22001</b> Procedures and Competence Requirements for Persons Undertaking Works Near High Voltage Cables and Cable Routes	2	06/2022
<b>NR/L3/ELP/27051</b> Working Instructions for d.c. Electrified Lines in the Liverpool Area	6	09/2019
<b>NR/L3/ELP/27052</b> Working Instructions for D.C. Electrified Lines on the Northern City Line	6	06/2021
<b>NR/L3/ELP/27052</b> Working Instructions for D.C. Electrified Lines on the Northern City Line	7	06/2022
<b>NR/L3/ELP/27115</b> Arrangements for Isolation of the Conductor Rail for Pre-Planned Possessions of the Line	4	09/2018
<b>NR/L3/ELP/27140</b> Application of Short Circuits for Conductor Rail Isolations	4	03/2019
<b>NR/L3/ELP/27171</b> Electrical Insulating Gloves - <b>Replaces NR/WI/ELP/27171</b>	3	06/2021
<b>NR/L3/ELP/27237</b> Overhead Line Work Instructions	23	09/2021
<b>NR/L3/ELP/3091 DC Electrified Lines Working Instructions</b>	5	09/2019
<b>NR/L3/ELP/29987</b> Working on or About 25 KV AC Electrified Lines	6	09/2021
<b>NR/L3/ELP/29987</b> Working on or About 25 KV AC Electrified Lines	7	06/2022
<b>NR/L2/ENV/015</b> Environment and Social Minimum Requirements for Projects – Design and Construction	9	06/2021
<b>NR/L2/ENV/115</b> Environment and Social Management System Requirements	1	03/2018
<b>NR/L2/ENV/120</b> Waste Management	1	12/2019
<b>NR/L2/ENV/121</b> Managing Environmental and Social Impact of Noise and Vibration	1	12/2019
<b>NR/L2/ENV/122</b> Biodiversity	1	03/2021
<b>NR/L2/ENV/123</b> Prevention of Pollution to Land and Water	1	12/2019
<b>NR/L2/INF/02203</b> Controlled Publications - Issue & Receipt	2	12/2011
<b>NR/L3/INF/02204</b> Controlled Publications - Process & Accountabilities	3	12/2011
<b>NR/L3/INF/02226</b> Corporate Records Retention Schedule	3	12/2017

# Controlled Documents



NETWORK RAIL STANDARDS		
Ref. / Title	Issue No	Issue Date
<b>NR/GN/INI/001</b> Guidance on the Management of Door to Door Work & Travel Time	<b>1</b>	<b>12/2008</b>
<b>NR/L2/INI/CP0070</b> Principal Contractor Licensing Scheme	<b>5</b>	<b>06/2017</b>
<b>NR/L2/INI/EDT/CP0091</b> Specification for Computer Aided Design	<b>4</b>	<b>12/2018</b>
<b>NR/L3/INI/CP0028</b> Contract Requirements - Quality	<b>3</b>	<b>06/2012</b>
<b>NR/L3/INI/CP0036</b> Provision of Welfare Facilities	<b>4</b>	<b>08/2008</b>
<b>NR/L3/INV/3001</b> Reporting and Investigation Manual	<b>7</b>	<b>09/2021</b>
<b>NR/GN/MTC/089</b> Guidance for the Exchange of Asset Data and the Continuing Maintenance of Assets Undergoing Change	<b>1</b>	<b>09/2020</b>
<b>NR/L2/MTC/089</b> Arrangements for the Exchange of Asset Data and the Continuing Maintenance of Assets Undergoing Change	<b>2</b>	<b>12/2018</b>
<b>NR/L3/MTC/CP009</b> COVID-19 Contingency Plan: Safe Working Practices	<b>11</b>	<b>03/2022</b>
<b>NR/L3/MTC/EN0100</b> Waste Management	<b>3</b>	<b>06/2012</b>
<b>NR/L3/MTC/EN0101</b> Management of Discharges to Sewers & Controlled Waters	<b>3</b>	<b>06/2012</b>
<b>NR/L3/MTC/EN0225</b> Environ Management System for Infrastructure Maintenance	<b>1</b>	<b>06/2012</b>
<b>NR/L3/MTC/EP0152</b> Working on or Adjacent to Conductor Rail	<b>5</b>	<b>12/2011</b>
<b>NR/L3/MTC/MG0173</b> Monitoring of Spoken Safety Communications	<b>3</b>	<b>06/2019</b>
<b>NR/L3/MTC/MG0210</b> Management of Maintenance Work within a Worksite to Prevent a Possession Overrun	<b>3</b>	<b>06/2019</b>
<b>NR/L3/MTC/MG0213</b> Index of Standard Maintenance Forms	<b>18</b>	<b>06/2021</b>
<b>NR/L3/MTC/RCS0216</b> Risk Control Manual	<b>23</b>	<b>12/2021</b>
<b>NR/L3/MTC/RCS0216</b> Risk Control Manual	<b>24</b>	<b>06/2022</b>
<b>NR/L3/MTC/RCS0216/OLE02</b> Risk Control Manual: Working on Red Bonds/Impedance Bonds	<b>2</b>	<b>03/2012</b>
<b>NR/L3/MTC/SE0115</b> Confined Spaces Working & Entry Procedure	<b>2</b>	<b>06/2008</b>
<b>NR/L3/MTC/SE0117</b> Planned Assurance Inspections and Site Surveillance	<b>4</b>	<b>09/2018</b>
<b>NR/L3/MTC/SE0220</b> Planning and Delivering Safe Working at Height	<b>2</b>	<b>09/2020</b>
<b>NR/CS/OHS/002</b> Policy on Working Safely	<b>1</b>	<b>02/2007</b>
<b>NR/GN/OHS/00155</b> Short-term Changes in the Creation and Application of Safe Work Packs and Briefing Arrangements COVID-19 Contingency Plan (Guidance for Regions on NR/L2/OHS/019)	<b>1</b>	<b>06/2020</b>
<b>NR/L1/OHS/051</b> Drugs and Alcohol	<b>6</b>	<b>12/2015</b>
<b>NR/L1/OHS/052</b> Traumatic Incident Management	<b>1</b>	<b>06/2016</b>
<b>NR/L2/OHS/00110</b> First Aid at Work	<b>6</b>	<b>09/2017</b>
<b>NR/L2/OHS/00112</b> Worksafe Procedure	<b>3</b>	<b>09/2020</b>
<b>NR/L2/OHS/00120</b> Testing for Drugs and Alcohol	<b>5</b>	<b>12/2015</b>
<b>NR/L2/OHS/00124</b> Competence Specific Medical Fitness Requirements and Occupational Health Provider Requirements for Medical Assessments	<b>3</b>	<b>12/2016</b>
<b>NR/L2/OHS/00130</b> Creating a Site of Work Segregated from the Railway	<b>1</b>	<b>03/2022</b>
<b>NR/L2/OHS/003</b> Fatigue Risk Management	<b>9</b>	<b>12/2019</b>
<b>NR/L2/OHS/0044</b> Planning and Managing Construction Work replaces NR/L3/INI/CP0044 Work Package Planning	<b>5</b>	<b>12/2016</b>
<b>NR/L2/OHS/0047</b> Managing Health and Safety in Construction (Application of the Construction (Design and Management) Regulations to Network Rail)	<b>7</b>	<b>06/2019</b>
<b>NR/L2/OHS/019</b> Safety of People working on or near the Line	<b>10</b>	<b>12/2020</b>
<b>NR/L2/OHS/020</b> Track Visitor Permits	<b>5</b>	<b>08/2008</b>
<b>NR/L2/OHS/021</b> Personal Protective Equipment and Work Wear	<b>3</b>	<b>06/2009</b>
<b>NR/L2/OHS/022</b> Working Safely at Height	<b>2</b>	<b>03/2020</b>
<b>NR/L2/OHS/032</b> Training, Competence and Assessment in Accident and Incident Investigation	<b>3</b>	<b>09/2021</b>

# Controlled Documents



NETWORK RAIL STANDARDS		
Ref. / Title	Issue No	Issue Date
<b>NR/L2/OHS/050</b> Sentinel Scheme Rules	4	03/2011
<b>NR/L2/OHS/053</b> Assessing Risk of Stress in the Workplace	3	03/2022
<b>NR/L2/OHS/157</b> Health surveillance for silica and asbestos and the management of diagnosed occupational respiratory conditions	1	03/2017
<b>NR/L3/OHS/0046</b> The Reporting, Investigation and Recording of Safety and Sustainable Development Events and Close Calls within Infrastructure Projects	3	06/2018
<b>NR/L3/OHS/005</b> Design and Construction Management in a High Street Environment	2	03/2022
<b>NR/L3/OHS/005</b> Design and Construction in a High Street Environment	3	06/2022
<b>NR/L3/OHS/019-IP</b> Planning and Delivering Safe Work – Implementation Principles for Infrastructure Projects	1	06/2018
<b>NR/L2/OPS/033</b> Recording Spoken Safety Critical Communications between Possession Management and Engineering Trains / On-Track Plant Drivers when Working in Possessions and Worksites.	3	06/2019
<b>NR/L2/OPS/291</b> Railway Crime Risk Management	1	12/2019
<b>NR/L3/OPS/0064</b> Delivering Work within Possessions – <b>Replaces NR/L3/INI/CP0064</b>	6	06/2021
<b>NR/L3/OPS/084</b> Line Clear Arrangements Following Engineering Works in Axle Counter Areas – Line Clear Verification Process	6	12/2021
<b>NR/L3/OPS/251</b> Unmanned Aircraft System (Drone/UAS) Operations	4	09/2021
<b>NR/OPS/DEV/009</b> Network Rail: Good Practice Guide for Working at Operational Locations (Signal Boxes, Electrical Control Rooms, Controls) During COVID 19	2	06/2020
<b>NR/GN/OTK/5000</b> Index of Off-Track Drawings	3	12/2021
<b>NR/L2/OTK/5201</b> Lineside Vegetation Management Manual	5	12/2020
<b>NR/GN/RMVP/0200</b> Infrastructure Plant Manual Guidance	1	12/2018
<b>NR/GN/RMVP/0200</b> Infrastructure Plant Manual Guidance	2	06/2022
<b>NR/L2/RMVP/0200</b> Infrastructure Plant Manual	10	12/2018
<b>NR/L2/RMVP/0200</b> Infrastructure Plant Manual	11	06/2022
<b>NR/L3/RMVP/0201 Calibration Work Instruction Manual Replaces NR/L3/MTC/ME0201</b> This standard provides the index and version control of Calibration Work Instructions for the internal calibration and comparison checking of Inspection, Measuring and Test Equipment (IMTE).	2	09/2011
<b>NR/L2/RSE/0005</b> Product Design for Reliability	5	12/2020
<b>NR/L2/RSE/070</b> Engineering Verification	3	03/2022
<b>NR/L2/RSE/100</b> Network Rail Acceptance Panel processes	7	12/2021
<b>NR/L1/RSK/001</b> Network Rail Risk Policy	3	09/2019
<b>NR/L2/SCO/302</b> Supplier Qualification Requirements	1	06/2020
<b>NR/L3/SCO/313</b> On-Track Machines (OTMs) Driver and Operations Standards Manual	11	12/2021
<b>NR/L3/SCO/314</b> Engineering Assurance for T&RS, OTM and OTP Projects	1	12/2018
<b>NR/L3/SCO/314</b> Engineering Assurance for T&RS, OTM and OTP Projects	2	06/2022
<b>NR/L3/SCO/320</b> Supplier Quality Assurance (SQA)	2	09/2020
<b>NR/SIN/185</b> Identification and Inspection of Plain-Lined S&C	1	06/2019
<b>NR/L2/SIG/11201</b> Signalling Design Handbook	15	12/2021
<b>NR/L2/SIG/14201</b> Signalling Risk Assessment Handbook	5	12/2020
<b>NR/L2/SIG/30009</b> Signalling Principles Handbook	21	12/2021
<b>NR/L2/SIG/30014</b> Signalling Works Testing Handbook	19	09/2021
<b>NR/L2/SIG/30014</b> Signalling Works Testing Handbook	20	06/2022

NETWORK RAIL STANDARDS		
Ref. / Title	Issue No	Issue Date
<b>NR/L2/SIG/50035</b> Competence and Training in Signal and Level Crossing Engineering	<b>2</b>	<b>03/2022</b>
<b>NR/L2/SIG/50035</b> Competence and Training in Signal and Level Crossing Engineering	<b>3</b>	<b>06/2022</b>
<b>NR/L2/SIG/50040</b> Temporary Speed Restrictions replaces <b>NR/L3/SIG/MG0110</b>	<b>1</b>	<b>12/2021</b>
<b>NR/L3/SIG/10064</b> General Instructions to Staff Working on S&T Equipment	<b>10</b>	<b>09/2021</b>
<b>NR/L3/SIG/10064</b> General Instructions to Staff Working on S&T Equipment	<b>11</b>	<b>06/2022</b>
<b>NR/L3/SIG/10661</b> Signal Maintenance Task Intervals	<b>22</b>	<b>12/2021</b>
<b>NR/L3/SIG/10661</b> Signal Maintenance Task Intervals	<b>23</b>	<b>06/2022</b>
<b>NR/L3/SIG/10663</b> Signal Maintenance Specifications	<b>14</b>	<b>12/2021</b>
<b>NR/L3/SIG/10663</b> Signal Maintenance Specifications	<b>15</b>	<b>06/2022</b>
<b>NR/L3/SIG/11231</b> Signal Maintenance Testing Handbook	<b>16</b>	<b>09/2021</b>
<b>NR/L3/SIG/11231</b> Signal Maintenance Testing Handbook	<b>17</b>	<b>06/2022</b>
<b>NR/L3/SIG/11235</b> Signal Intermediate Testing Handbook	<b>1</b>	<b>09/2021</b>
<b>NR/L3/SIGELP/50000</b> Safe working and maintenance on or near Signalling Power Distribution Equipment above 175 volts	<b>4</b>	<b>09/2021</b>
<b>NR/L3/SIGELP/50001</b> Signalling Power Distribution Equipment above 175 Volts (Work Instructions)	<b>5</b>	<b>09/2021</b>
<b>NR/L3/SIGELP/50002</b> Safe Working Practices When Working on or Near Signalling Power Distribution Equipment Above 175 Volts	<b>1</b>	<b>12/2016</b>
<b>NR/L3/SIGELP/50003</b> Safe Working Practices When Working on or Near Signalling Equipment	<b>1</b>	<b>03/2018</b>
<b>NR/L2/TEL/30067</b> The Transmission of Safety Related Information	<b>2</b>	<b>12/2011</b>
<b>NR/L2/TEL/30156</b> Functional Requirements for Safety Related Communications Equipment for On Track Plant Working	<b>1</b>	<b>12/2011</b>
<b>NR/L3/TEL/30181</b> Telecoms Maintenance Work Instructions Handbook	<b>7</b>	<b>03/2022</b>
<b>NR/GN/TRK/7001</b> Index of Track Work Information Sheets (TWI)	<b>17</b>	<b>09/2021</b>
<b>NR/GN/TRK/7001</b> Index of Track Work Information Sheets (TWI)	<b>18</b>	<b>06/2022</b>
<b>NR/L1/TRK/100</b> Management of Track Assets	<b>1</b>	<b>03/2020</b>
<b>NR/L2/TRK/001</b> Inspection and Maintenance of Permanent Way	<b>22</b>	<b>03/2022</b>
<b>NR/L2/TRK/4239</b> Track Bed Investigation, Design and Installation	<b>2</b>	<b>09/2020</b>
<b>NR/L3/TRK/003</b> Index of Track Engineering Forms	<b>38</b>	<b>03/2022</b>
<b>NR/L3/TRK/003</b> Index of Track Engineering Forms	<b>39</b>	<b>06/2022</b>
<b>NR/L3/TRK/1015</b> Management of Basic Visual Inspection	<b>7</b>	<b>03/2022</b>
<b>NR/L3/TRK/3530</b> Track Lubricants	<b>1</b>	<b>06/2012</b>
<b>NR/L3/TRK/7006</b> Creation and Application of Initial ESR Design	<b>1</b>	<b>03/2019</b>
<b>NR/L3/TRK/7013</b> Planning and Installation of Temporary Rail Joints	<b>1</b>	<b>09/2021</b>
<b>NR/L2/TRK/7014</b> Standardised Risk Based Maintenance Regime (RBM) for the Inspection and Maintenance of the Permanent Way	<b>2</b>	<b>03/2022</b>

# Controlled Documents



OTHER STANDARDS & GUIDANCE	
Ref. / Title	Reference
BS EN ISO 14001:2015	2015
BS EN ISO 9001:2015	2015
BS EN ISO 45001:2018	2018
BS OHSAS 18001:2007 <b>BS OHSAS 18001 has been replaced by ISO 45001 the new international standard for occupational health and safety. Organizations who are already certified to BS OHSAS 18001 will need to upgrade to ISO 45001 by March 2021.</b>	2007
Investigating Accidents and Incidents – HS(G)245	ISBN 9780717628278
Management of Health and Safety at Work Regulations 1999 Approved Code of Practice and guidance	ISBN 9780717624881
Managing health and safety in construction Construction (Design and Management) Regulations 2015. Guidance on Regulations	ISBN 9780717666263
Successful Health and Safety Management – HS(G)65	ISBN 9780717612765
Sentinel Scheme Rules <a href="https://info.railsentinel.co.uk/about/rules/">https://info.railsentinel.co.uk/about/rules/</a>	V4 26 March 2020 Compliance Date 26 March 2020
RTAS Rules <a href="#">QA Reference – National Skills Academy for Rail (nsar.co.uk)</a>	V2.0 Updated 24 August 2020

LEGISLATION	
Ref. / Title	Reference
Bribery Act 2010	2010 c. 23
Control of Asbestos at Work Regulations 2002	2002 No. 2675
Control of Pollution (Amendment) Act 1989	1989 c. 14
Control of Pollution Act 1974	1974 c. 40
Corporate Manslaughter and Corporate Homicide Act 2007	2007 c. 19
Data Protection Act 2018	2018 c. 12
Environmental Protection Act 1990	1990 c. 43
European Union (Future Relationship) Act 2020	2020 c. 29
Health & Safety at Work etc. Act 1974	1974 c. 37
Modern Slavery Act 2015	2015 c. 30
Pollution Prevention and Control Act 1999	1999 c. 24
The Confined Spaces Regulations 1997	1997 No. 1713
The Construction (Design and Management) Regulations 2015	2015 No. 51
The Control of Asbestos at Work (Amendment) Regulations 1992	1992 No. 3068
The Control of Asbestos at Work (Amendment) Regulations 1998	1998 No. 3235
The Control of Asbestos at Work Regulations 1987	1987 No. 2115
The Control of Asbestos in the Air Regulations 1990	1990 No. 556
The Control of Asbestos Regulations 2006	2006 No. 2739
The Control of Asbestos Regulations 2012	2012 No. 632
The Control of Lead at Work Regulations 1980	1980 No. 1248
The Control of Lead at Work Regulations 1998	1998 No. 543
The Control of Lead at Work Regulations 2002	2002 No. 2676
The Control of Noise at Work Regulations 2005	2005 No. 1643

# Controlled Documents



LEGISLATION	
Ref. / Title	Reference
The Control of Substances Hazardous to Health (Amendment) Regulations 2004	2004 No. 3386
The Control of Substances Hazardous to Health Regulations 2002	2002 No. 2677
The Environmental Noise, Site Waste Management Plans and Spreadable Fats etc. (Revocations and Amendments) Regulations 2013	2013 No. 2854
The Fire Precautions (Workplace) Regulations 1997	1997 No. 1840
The Hazardous Waste (England and Wales) (Amendment) Regulations 2009	2009 No. 507
The Hazardous Waste (England and Wales) Regulations 2005	2005 No. 894
The Health and Safety (Consultation with Employees) Regulations 1996	1996 No. 1513
The Health and Safety (Display Screen Equipment) Regulations 1992	1992 No. 2792
The Health and Safety (First-Aid) Regulations 1981	1981 No. 917
The Health Protection (Coronavirus, Collection of Contact Details etc and Related Requirements) Regulations 2020	2020 No. 1005
The Health Protection (Coronavirus, International Travel) (England) Regulations 2020	2020 No. 568
The Health Protection (Coronavirus, Restrictions) (All Tiers) (England) Regulations 2020	2020 No. 1374
The Health Protection (Coronavirus, Restrictions) (England) (No. 3) Regulations 2020	2020 No. 750
The Health Protection (Coronavirus, Restrictions) (Local Authority Enforcement Powers and Amendment) (England) Regulations 2020	2020 No. 1375
The Health Protection (Coronavirus, Restrictions) (Self-Isolation) (England) Regulations 2020	2020 No. 1045
The Health Protection (Coronavirus, Wearing of Face Coverings in a Relevant Place) (England) Regulations 2020	2020 No. 791
The Lifting Operations and Lifting Equipment Regulations 1998	1998 No. 2307
The Manual Handling Operations Regulations 1992	1992 No. 2793
The Personal Protective Equipment (EC Directive) Regulations 1992	1992 No. 3139
The Personal Protective Equipment at Work Regulations 1992	1992 No. 2966
The Personal Protective Equipment Regulations 2002	2002 No. 1144
The Provision and Use of Work Equipment Regulations 1992	1992 No. 2932
The Provision and Use of Work Equipment Regulations 1998	1998 No. 2306
The Railways and Other Guided Transport Systems (Safety) Regulations 2006	2006 No. 599
The Regulatory Reform (Fire Safety) Order 2005	2005 No. 1541
The Reporting of Injuries, Diseases and Dangerous Occurrences Regulations 2013	2013 No. 1471
The Safety Representatives and Safety Committees Regulations 1977	1977 No. 500
The Waste Management (England and Wales) Regulations 2006	2006 No. 937
The Work in Compressed Air Regulations 1996	1996 No. 1656
The Workplace (Health, Safety and Welfare) Regulations 1992	1992 No. 3004
Transport and Works Act 1992	1992 c. 42
Water Resources Act 1991	1991 c. 57
Wildlife and Countryside (Amendment) Act 1991	1991 c. 39
Wildlife and Countryside Act 1981	1981 c. 69

# Controlled Documents



## Key

StdNo	Current standard
Stdno	New Standard
StdNo	Live standard pending withdrawal
StdNo	Superseded/Withdrawn

## Modular Rulebook GE/RT8000

### PTS Only

In most cases only PTS handbook is required, unless one of the following applies:

1. Index, amendment module and Module *G1* to be issued to the following:

*Supervisors and managers who issue publications*  
*Staff who operate signal post replacement switches*  
*Staff who place protection for Line Blockage or T3*  
*Staff who secure points*  
*Those who use tents on or near the line*

2. Index and amendment module to be issued to the following:

*Lookouts*  
*People who take charge of cranes and equipment which could foul an open line*  
*People who take charge of work on or near points*  
*People who carry out patrolling/inspecting duties*

### Other competencies (IWA, COSS, PC, ES, MC, CC)

Rule Book			
Doc No & Issue	Issue Date	Title	Synopsis
<a href="#">GERT8000-Issue Iss 34</a>	Dec 2021	Rule Book Module Issue History	This document contains updates to align with changes to Rule Book module issues (GERT8000).
<a href="#">GERT8000-Issue HB Iss 15</a>	Dec 2021	Rule Book Handbook Issue History	This document contains updates to align with changes to Rule Book Handbook issues (GERT8000).
<a href="#">GERT8000-RBBL Iss 37</a>	Dec 2021	Rule Book Briefing Leaflet	Each issue of the Rule Book Briefing Leaflet contains a summary of the changes being introduced to GERT8000.
<a href="#">GERT8000-Gloss Iss 5</a>	Sep 2018	Glossary of Railway Terminology	You will need this glossary if you are issued with GERT8000.
<a href="#">GERT8000-AC Iss 7</a>	Dec 2021	AC electrified lines	You will need this module if you carry out the duties of a train driver, guard, shunter, designated person (DP), signaller, crossing keeper or person in charge of sidings in AC electrified areas.
<a href="#">GERT8000-DC Iss 5</a>	Dec 2021	DC electrified lines	You will need this module if you carry out the duties of a train driver, guard, shunter, designated person (DP), signaller, crossing keeper in DC electrified areas.
<a href="#">GERT8000-G1 Iss 9</a>	Sep 2021	General safety responsibilities and personal track safety for non-trackworkers	You will need this module if you carry out the duties of: <ul style="list-style-type: none"> <li>• a train driver</li> <li>• a guard</li> <li>• a shunter</li> <li>• a designated person (DP)</li> <li>• a signaller</li> <li>• a crossing keeper</li> <li>• platform staff.</li> </ul>
<a href="#">GERT8000-HB1 Iss 7</a>	Sep 2021	General duties and track safety for track workers	This handbook is for those personnel who need to go on the operational railway to carry out their duties, with the exception of a train driver, guard, shunter, signaller, crossing keeper or designated person (DP).
<a href="#">GERT8000-HB10 Iss 4</a>	Sep 2015	Duties of the COSS or SWL and person in charge when using a hand trolley	You will need this handbook if you are the COSS or SWL and person in charge when using a hand trolley. This document has been updated as part of the December 2015 Rule Book Programme.
<a href="#">GERT8000-HB11 Iss 9</a>	Sep 2021	Duties of the person in charge of the possession (PICOP)	You will need this handbook if you carry out the duties of the PICOP.



# Controlled Documents



Rule Book			
Doc No & Issue	Issue Date	Title	Synopsis
<a href="#">GERT8000-HB12 Iss 8.pdf</a>	Sep 2020	Duties of the engineering supervisor (ES) or safe work leader (SWL) in a possession	You will need this handbook if you carry out the duties of the ES or SWL in a possession. Section 3.2 has been revised to facilitate the introduction of the flexible train arrival point (FTAP) into the Rule Book. Section 10.3 has been revised to include arrangements for giving up a work site with an engineering train or on-track machine standing within it. The changes are intended to allow work to be undertaken for a greater proportion of the available time within a possession. A new section 11 has been added to facilitate the introduction of high output protection zones into the Rule Book. The introduction of high output protection zones into the Rule Book is intended to improve track worker safety by removing the need for possession support staff to go trackside to place standard possession protection, and to result in improved productivity on each occasion that a high output train is used.
<a href="#">GERT8000-HB13 Iss 2</a>	Sep 2014	Duties of the person in charge of the siding possession (PICOS)	You will need this handbook if you carry out the duties of a PICOS. Information on changes to this issue can be found in the Rule Book Briefing Leaflet (GERT8000-RBBL Iss 27)
<a href="#">GERT8000-HB14 Iss 3</a>	Mar 2021	Duties of the person in charge of loading and unloading rail vehicles during engineering work	You will need this handbook if you carry out the duties of the person in charge of loading and unloading rail vehicles during engineering work.
<a href="#">GERT8000-HB15 Iss 5</a>	Sep 2017	Duties of the machine controller (MC) and on-track plant operator	You will need this handbook if you carry out the duties of the machine controller (MC) and on-track plant operator. This document has been updated as part of the December 2015 Rule Book Programme.
<a href="#">GERT8000-HB16 Iss 4</a>	Sep 2018	AC electrified lines	This handbook is for those personnel who need to go on the operational railway in an AC electrified area to carry out their duties.
<a href="#">GERT8000-HB16 Iss 5</a>	Dec 2021	AC electrified lines	This handbook is for those personnel who need to go on the operational railway in an AC electrified area to carry out their duties.
<a href="#">GERT8000-HB17 Iss 3</a>	Sep 2015	DC electrified lines	This handbook is for those personnel who need to go on the operational railway in a DC electrified area to carry out their duties. This document has been updated as part of the December 2015 Rule Book Programme.
<a href="#">GERT8000-HB17 Iss 4</a>	Dec 2021	DC electrified lines	This handbook is for those personnel who need to go on the operational railway in an DC electrified area to carry out their duties.
<a href="#">GERT8000-HB18 Iss 4</a>	Sep 2015	Duties of a Level Crossing Attendant	You will need this handbook if you carry out the duties of a level crossing attendant. This document has been updated as part of the December 2015 Rule Book Programme.
<a href="#">GERT8000-HB19 Iss 4.pdf</a>	Sep 2020	Work on signalling equipment - duties of the signalling technician	You will need this handbook if you carry out the duties of a signalling technician. Section 1.5 has been revised to facilitate the introduction of high output protection zones into the Rule Book. The introduction of high output protection zones into the Rule Book is intended to improve track worker safety by removing the need for possession support staff to go trackside to place standard possession protection, and to result in improved productivity on each occasion that a high output train is used.
<a href="#">GERT8000-HB2 Iss 2</a>	Sep 2015	Instructions for track workers who use emergency protection equipment	This handbook is for those personnel who need to go on the operational railway to carry out their duties and have been trained to carry out emergency protection. It does not apply to: train drivers, guards, shunters, signallers, crossing keepers and those who act as a designated person (DP). This document has been updated as part of the December 2015 Rule Book Programme.
<a href="#">GERT8000-HB20 Iss 4</a>	Sep 2021	General duties of a safe work leader (SWL) working outside a possession	You will need this handbook if you have the general duties of a safe work leader working outside a possession.
<a href="#">GERT8000-HB21 Iss 5</a>	Sep 2021	Safe work leader (SWL) blocking a line	You will need this handbook if you carry out the duties of a IWA, COSS or PC blocking a line.
<a href="#">GERT8000-HB3 Iss 3</a>	Sep 2014	Duties of the lookout and site warden	This handbook is for those personnel who have duties of the lookout and site warden. Information on changes to this issue can be found in the Rule Book Briefing Leaflet (GERT8000-RBBL Iss 27).
<a href="#">GERT8000-HB4 Iss 2</a>	Sep 2014	Duties of a points operator and route-setting agent - moving and securing points by hand	This handbook is for those personnel who has duties of a points operator and route-setting agent - moving and securing points by hand. Information on changes to this issue can be found in the Rule Book Briefing Leaflet (GERT8000-RBBL Iss 27).

Rule Book			
Doc No & Issue	Issue Date	Title	Synopsis
<a href="#">GERT8000-HB5 Iss 2</a>	Sep 2011	Handsignalling duties	This handbook is for those who carry out handsignalling duties.
<a href="#">GERT8000-HB6 Iss 7</a>	Sep 2021	General duties of an individual working alone (IWA)	This handbook is for those personnel with general duties of an individual working alone (IWA).
<a href="#">GERT8000-HB7 Iss 8</a>	Sep 2021	General duties of a controller of site safety (COSS)	This handbook is for those personnel who have the general duties of a controller of site safety (COSS).
<a href="#">GERT8000-HB8 Iss 8</a>	Sep 2021	IWA, COSS or PC blocking a line	You will need this handbook if you carry out the duties of a IWA, COSS or PC blocking a line.
<a href="#">GERT8000-HB9 Iss 7</a>	Sep 2019	IWA or COSS setting up safe systems of work within possessions	You will need this handbook if you carry out the duties of an IWA or COSS setting up safe systems of work within possessions.
<a href="#">GERT8000-OTM Iss 10</a>	Mar 2021	Working of on-track machines (OTM)	You will need this module if you carry out the duties of a driver of an on-track machine, an operator of an on-track machine, or a signaller.
<a href="#">GERT8000-T10 Iss 5</a>	Sep 2021	Duties of a designated person (DP) and people working on rail vehicles	You will need this module if you carry out the duties of a designated person or person working on a rail vehicle.
<a href="#">GERT8000-T3 Iss 10</a>	Sep 2021	Possession of a running line for engineering work	You will need this module if you carry out the duties of a driver or signaller.



## Network Rail Safety Central – Information Section

### Code of Conduct

The Code of Conduct establishes some minimum standards that Network Rail expects in their supply chain. It has been developed by Network Rail's National Supply Chain, Industry bodies, and the Unions. It will be reviewed and updated by members of these same groups bi-annually. Please email queries to [codeofconduct@networkrail.co.uk](mailto:codeofconduct@networkrail.co.uk)

[Code of Business Ethics](#) (web page)

[Modern Slavery](#) (web page)

### Network Rail Safety Bulletins

In this section you'll find copies of the Network Rail safety bulletins regularly sent out to staff working on the Network Rail infrastructure. These cover a range of different safety issues and are often issued in response to a specific incident.

<https://safety.networkrail.co.uk/tools-resources/safety-bulletins/>

The following link contains a list of Network Rail Safety Bulletins: [Safety Bulletin List Update Jan 2022](#)

You can refine your search by:

#### Bulletin type

- Archive - Lessons Learnt
- Archive - Safety Bulletins
- Safety Advice
- Safety Alert
- Safety Bulletin
- Shared Learning

There will also be an archive of past bulletins, so you can download any that you missed, or want to read again. **Please download them for the FULL TEXT OF THE BULLETINS.**

#### Safety Bulletins

- [Safety Bulletin NRB22-03 – Test before Touch on OLE](#) May 11, 2022

#### Safety Advice

- [Safety Advice NRA22-02 – Rigid worksite fencing](#) May 16, 2022

#### Other documents

- [Safety Alert NRX22-01 – Lookout Operated Warning System Incident](#) March 9, 2022

#### Lessons Learnt / Shared Learning

Network Rail are now producing 'Lessons Learnt' publications following events which have led to Formal investigations or local investigations where significant points of learning have resulted. Network Rail believes that these lessons will be of value for all involved in the industry and not just safety professionals, they are ultimately designed to aid prevention of events of a similar nature happening again elsewhere.

[Safety Bulletins | Safety Central \(networkrail.co.uk\)](#)

Click on "Shared Learning" in the Bulletin type menu on right of screen. Type NRL22 in the search box for this year's.

## Health & Wellbeing

[Health and wellbeing](#) (web page)

## Risk Management

[Think RISK](#) (web page)

## Resource Library

<https://safety.networkrail.co.uk/tools-resources/resource-library/>

The Resource Library holds a wealth of information.

## SCO 24:7 (Supply Chain – Operations) Telephone

**SCO 24:7 (formally the NSC247 and NDS24:7): call 01908 723500 or 085 65500 (internal)**

SCO 24:7 operates 24 hours a day, 365 days of the year from the Quadrant in Milton Keynes. Our remit is to manage the real-time delivery of SCO products & services to our customers. This includes engineering haulage, materials, on track machines, infrastructure monitoring, seasonal treatment, HSEA reporting, site access services and lone worker monitoring.

## Emergency

If there's a safety threat to you or to others such as:

- Animals, objects or people on or near the track
- Damage or fault at a level crossing
- A vehicle has hit a bridge
- A broken fence or open gate allowing access to the track

Please call Network Rail Emergency 24-hour helpline immediately: **03457 11 41 41**

## To report a crime

Please contact the British Transport Police: **0800 40 50 40, 999 or Text 61016**

## HSE Fatigue and Risk Index (FRI) Calculator

The Fatigue Risk Index (FRI) has been withdrawn from the HSE website. The reasons for this are:

- The software platform is an older Excel that can no longer be supported on the HSE website.
- The design of the FRI requires improvement to promote better understanding of its outputs, its limitations and its role in a Fatigue Management System.
- In its current format, there have been case of the FRI being issued in order to justify work patterns that clearly require further action to reduce fatigue-related risk.
- FRI users who have access to the FRI in its current format can continue to use it, provided you have the necessary expertise to use the tool and understand the outputs and limitations.

Following feedback, we are making the tool available, as well as how to documents, to aid with calculations.

[HSE Fatigue and Risk Index \(FRI\) Calculator](#)



## Useful Links

The following pages contain other useful links and safety information from various sources which may be relevant to you.

Item	Details
<p><b>Health and Safety Executive</b>  <a href="http://www.hse.gov.uk">http://www.hse.gov.uk</a>                      – Website</p>	<p>Government agency responsible for regulating risks to health and safety arising from work. HSE publications can be downloaded free in Adobe PDF format.</p>
<p><b>CIRAS Online</b>  <a href="http://www.ciras.org.uk">http://www.ciras.org.uk</a>                      – free access</p>	<p>The Confidential Incident Reporting and Analysis System                      Freephone number 0800 4 101 101.</p>
<p><b>Network Rail</b>  <a href="http://www.networkrail.co.uk">http://www.networkrail.co.uk</a>                      – Website</p>	<p>Owner and operator of Britain's railway infrastructure.</p>
<p><b>Network Rail Standards</b>  <a href="http://www.ihserc.com/">http://www.ihserc.com/</a>                      – subscription required</p> <p><b>IHS Customer Care</b>                      For search queries and all other enquiries                      Phone: 01344 328300 or email  <a href="mailto:customer.support@ihsmarkit.com">customer.support@ihsmarkit.com</a></p> <p><b>Network Rail Standards Subscriptions</b>                      IHS Markit Ltd                      Phone: 01344 328000</p> <p><b>Network Rail Standards &amp; Controls Publications Manager</b>                      Neil Whitaker                      Phone: 01908 782564</p> <p><b>Network Rail Standards Hard Copy Document Centre</b>                      IHS Retail                      Phone: 01344 328039                      Fax: 01344 328005 or email:  <a href="mailto:emeastore@ihsmarkit.com">emeastore@ihsmarkit.com</a></p> <p><b>Railway Group Standards</b>                      Rail Safety &amp; Standards Board Enquiry Desk                      Phone: 020 3142 5400 Website  <a href="http://www.rssb.co.uk">www.rssb.co.uk</a></p> <p><b>Network Rail Technical Drawings</b>                      National Records Group                      Email: <a href="mailto:nrgcivils@networkrail.co.uk">nrgcivils@networkrail.co.uk</a></p>	<p>All current Network Rail standards are available via the IHS website.</p> <p><b>You can access the new portal via the highlighted link but do be careful to claim your 100% discount when checking out!</b></p> <p><i>New standards portal</i>  <i>Last year we held focus groups with our SME suppliers to gain a stronger understanding of how we can make it easier for them to do business with us. Our <a href="#">SME Acton Plan</a>, published in November 2019, responded to these insights with a range of measures to support our SME community. These actions included our commitment to review access to our standards and control documents. These are the requirements for the operation of the rail network and delivery of infrastructure maintenance and enhancements.</i></p> <p><i>I am pleased to announce that this has resulted in the launch of a new portal which will make our standards freely available to the supply chain. Instructions on how to register can be seen on the <a href="#">portal home page</a>. Please do not hesitate to contact us with your feedback via <a href="mailto:SupplierCommunications@networkrail.co.uk">SupplierCommunications@networkrail.co.uk</a>.</i></p> <p><i>This initiative also supports our <a href="#">Open for Business programme</a> which encourages our suppliers to submit challenges to our standards to reduce complexity and costs.</i></p> <p><i>If you do have any questions as a result of these changes, please contact your local Network Rail representative or email <a href="mailto:suppliercommunications@networkrail.co.uk">suppliercommunications@networkrail.co.uk</a></i></p>
<p><b>Network Rail Safety Central</b>  <a href="http://safety.networkrail.co.uk">http://safety.networkrail.co.uk</a>                      – free access</p>	<p>The site is your one-stop shop of safety information, advice, resources and useful contacts, designed to promote consistency and best practice across the whole rail industry. The information is divided under the following sections:</p> <ul style="list-style-type: none"> <li>• Alerts &amp; Campaign Material</li> <li>• Communication &amp; Health</li> <li>• Commitment &amp; Rules</li> <li>• Safety Groups</li> <li>• On Site Solutions</li> <li>• Toolbox</li> </ul>



Item	Details
<p><b>RSSB Close Call System</b>  <a href="http://www.closecallsystem.co.uk">www.closecallsystem.co.uk</a>                      – Register for access</p>	<p>At the request of Network Rail and its contractors, RSSB has developed a new internet-based system that will allow the industry to centrally record and analyse 'Close Call incidents'. This is known as the Close Call System.</p>
<p><b>Rail Safety and Standards Board</b>  <a href="http://www.rssb.co.uk">http://www.rssb.co.uk</a>                      – free access</p>	<p>RSSB builds industry-wide consensus and facilitates the resolution of difficult cross-industry issues. They provide knowledge, analysis, a substantial level of technical expertise, powerful information and risk management tools.</p>
<p><b>Railway Group Standards</b>  <a href="https://www.rssb.co.uk/standards-catalogue">https://www.rssb.co.uk/standards-catalogue</a>                      – free access with registration</p> <p>Rail Safety &amp; Standards Board                      Enquiry Desk                      Phone: 020 3142 5400                      Website <a href="http://www.rssb.co.uk">www.rssb.co.uk</a></p>	<p><b>Purchasing Railway Group Standards</b>                      A copy of the order form can be found in the forms section of the RGS Catalogue or from the RGSONLINE website stated above. You will need the following details in order to complete the form:</p> <ul style="list-style-type: none"> <li>• Railway Group Standards code and title</li> <li>• Quantity</li> <li>• Price</li> <li>• Purchaser's full name, business, address and telephone number</li> <li>• Credit card details, cheque or purchase order number</li> </ul> <p>Then fax or post it to <b>Willsons Printers Limited</b> at the address below.</p> <p>Please ensure that you include your credit card details, purchase order or a cheque made payable to Willsons Printers. Payments can also be made by BACS - please contact Willsons for company bank details. Orders received will be dispatched within five working days.</p> <p><b>Purchasing National Operations Publications</b>                      National Operations Publications are Railway Group Standards which set out mandatory requirements for direct application in the workplace. These include:</p> <ul style="list-style-type: none"> <li>• Modular Rule Book (GERT8000)</li> <li>• Working Manual for Rail Staff: Handling and Carriage of Dangerous Goods (GORM3053)</li> <li>• Working Manual for Rail Staff: Freight Train Operators (GORM3056)</li> <li>• Rule Book Forms</li> </ul> <p>Details of these documents can be found in the sections 'Document Titles and Descriptions' for Traffic Operation and Management.</p> <p>As these documents are subject to frequent change, amendments which do not justify the reissue of the module or section of the working manual are published in GERT8001, Changes to National Operations Publications.</p> <p>Willsons Printers Limited supplies the modules and handbooks which make up the Modular Rule Book, Working Manual and Rule Book forms. You can order these documents by contacting <b>Denise Atkinson</b> at <b>Willsons Printers Limited</b> at the address below:</p> <p><b>Willsons Printers Limited</b>  <b>Highlander House</b>  <b>Cross Street, Newark</b>  <b>Nottinghamshire, NG24 1PP</b>  <b>Tel: 01636702334      Fax: 01636701396</b>  <a href="http://www.willsonshop.com">http://www.willsonshop.com</a></p>

## Useful Links



Item	Details
<p><b>M&amp;EE Networking Group Codes of Practice</b>  <a href="https://www.rssb.co.uk/standards-catalogue#stakeholder-publications">https://www.rssb.co.uk/standards-catalogue#stakeholder-publications</a></p> <p><b>Refine results by selecting Lead Committee</b></p>	<p>The M&amp;EE Networking Group is a non profit making group dedicated to the sharing of professional engineering and railway operations information and to provide a focus to the rail industry relating to operational and technical safety of plant. The group is a meeting of the professional heads of mechanical and electrical engineering and operations from infrastructure contractors, Network Rail, RSSB, the Rail Plant Association, London Underground and elected representatives from other infrastructure renewal companies, plant owners, and manufacturers/suppliers of plant and technical services.</p> <p>The M&amp;EE Networking Group produces Codes of Practice and other documents as good practice for all members of the industry.</p>
<p><b>Rail Sentinel</b>  <a href="https://www.railsentinel.co.uk/">https://www.railsentinel.co.uk/</a> – registered companies only</p>	<p><b>Sentinel Scheme Rules</b>                      The latest copy of the scheme rules can be found here: <a href="#">Sentinel Scheme Rules</a></p>
<p><b>Office of Rail and Road</b>  <a href="http://orr.gov.uk/">http://orr.gov.uk/</a>                      – free access</p>	<p>Independent safety and economic regulator for Britain's railways, and monitor of performance and efficiency for England's Strategic Road Network.</p>
<p><b>Rail Accident Investigation Branch</b>  <a href="http://www.raib.gov.uk/">http://www.raib.gov.uk/</a>                      – free access</p>	<p>Independent railway accident investigation organisation for the UK. It investigates railway accidents and incidents on the UK's railways to improve safety, not to establish blame.</p>

## Other Safety Information



## Other Bulletins

### Track Safety Alliance

A few videos of interest at the Track Safety Alliance website:

<http://www.tracksafetyalliance.co.uk/videos/65/>

### Southern Shield

#### Everyone Home Safe Every Day

Southern Shield is a collaborative safety forum that consists of Network Rail Infrastructure Projects Southern Region and its principal contractors. There are many more useful links on their website

<https://www.southernshield.co.uk/>

- Best Practice <https://www.southernshield.co.uk/best-practice/90/>
- Safety Messages <https://www.southernshield.co.uk/safety-messages/4/>
- Health & Wellbeing <https://www.southernshield.co.uk/health-and-wellbeing/82/>
- Library <https://www.southernshield.co.uk/library/3/>





# Our Safety Update



01 April 2022

## Simple misstep becomes a fracture

An incident at the end of a project earlier this month is an example of how a simple misstep can turn into a significant injury, involving treatment and time off work.

An engineer was leaving the site of the Farncombe to Petersfield Resignalling project when the accident happened.

With all works on track completed, the team was loading the Piling Rig and associated equipment back into the van.

The engineer was carrying a small Piling rod as she stepped off the curb on her way to the van when she turned her ankle and fell to the floor in some pain.

She was taken to A&E at the nearby Royal Surrey Hospital in Guildford, where an X-Ray found that she has ligament damage and a small chip, where it is believed the ligament ripped out some bone, making it a fracture. She will need to go to fracture clinic next week to find out how long she will need to be in a support boot.



### Things to think about

- When you've finished a job and are mentally on your way home, do you always take as much care where you step as you would at the start of the day?
- What could you do to stay mentally focused before leaving site?
- Do you always scan the area where you are going to step before you put your foot down?

We'd love to know what topics you'd like covered in Our Safety Update, so [please let us know](#)

## Stress Awareness Month 2022 - 1 to 29 April



The Stress Management Society has promoted Stress Awareness Month every April since 1992 to raise awareness of the causes and cures for our modern stress epidemic.

The last two years have been the most challenging we have faced and in 2020 the Society's services were overwhelmed by people who were struggling and seeking support. This year the theme is Community.

Throughout April, health care professionals and health promotion experts across the country will join forces to increase public awareness about both the causes and cures for our modern stress epidemic.

You can download the free resources, with hints and tips and the 30 day challenge to help combat stress [here](#).

### Solely Southern region

#### Health professionals a big hit in depots!

The Nutritionist and Sport Scientist who visited Tonbridge depot on 29 March really captured the interest and got the competitive spirit going of the night workers on shift there.



Without doubt, the Reaction Wall was the most popular activity on the night and promoted the competitiveness amongst the team, with each of them trying to beat each other's score... some even going on there several times! (They have since said how much fun this was and asked if they can have one permanently in the mess room as a pre workout before work!)



Another humorous highlight was wearing the beer goggles while building the structure in the diagram they were given, Those watching also had a great laugh watching their colleagues wearing them as they tried to build.



Then after all the exertion, the alternative 'healthier' snacks went down a treat, with some reserving porridge pots for the morning! Dietary and healthy eating support was also offered, along with meal plans.



The water bottles went down well too and there was a high uptake for the cholesterol testing and Tonita Scales. The health professionals offered signposting, advice or a referral based on their results. There were also leaflets and signposting information on offer, covering topics such as mental health, healthy eating, heart disease and testicular/breast cancer.

Please send your feedback on the newsletter to [southernregioncomms@networkrail.co.uk](mailto:southernregioncomms@networkrail.co.uk)



# Our Safety Update



08 April 2022

## An injury that could have been much worse



An incident with a conductor rail engineering (CRE) team changing insulator pots is an example of how clear communication and just Taking 5 could have prevented this injury, which involved treatment and time off work.

The work was being undertaken at night and involved lifting the conductor rail with a jack to be able to remove the old insulator pots and replace with new ones.

While carrying out the task, an insulator pot was renewed by the injured party (IP). Once completed, he stood clear, with the intention of moving to the next insulator pot, when he noticed that the pot needed some minor adjustment, so began to adjust it.

However, the member of staff operating the jack had already started to lower the conductor rail to remove it and place it further along the rail. The IP was unaware that this was being done, so when he moved to adjust the pot, he caught both thumbs between the conductor rail and insulator pot.

### Things to think about

- Ensure that a safe system of work is set up for changing conductor rail pots and for safe operation of the jack.
- Are there members of the team that haven't worked together before? Does everybody understand the risks involved and how to safely carry out the task?
- Is there clear communication agreed and in place before lifting and lowering the rail? This is particularly pertinent at night when visibility may be restricted.
- Take 5 before, during and after a task.

## Watch out for Oak Processionary Moth caterpillars



The Oak Processionary Moth (OPM) lays thousands of eggs at a time on oak trees. Once hatched into caterpillars, they travel over the tree in a nose-to-tail line, like a procession. The caterpillars feed on the oak tree leaves, leaving them skeletonised, with only the main veins remaining. They also build nests on the branches and trunks on the tree. From about late June to early August, the caterpillars retreat into the nests and moult to the pupal stage. The pupae remain in the nests during this period until they are ready to emerge as adult moths; they can become moths as early as July until September.



These caterpillars can pose risk to health, as they are covered in tiny, barbed hairs and contact with them or their nests can cause health issues in people and animals. This can include skin irritation and rashes, eye and throat complaints and, occasionally, breathing difficulties.

You can find out where OPM infestation is recorded by checking the [OPM map](#) and, as you can see, the Southern region is prime OPM territory.

If you see any OPMs or nests, you should report them immediately, using the [OPM Tree Alert Reporting Tool](#).

We'd love to know what topics you'd like covered in Our Safety Update, so please let us know



## Specifically supply partners

### Track worker safety update for suppliers



We've made a huge amount of progress to keep our track workers away from coming into contact with trains, with the use of unassisted lookout working - the lowest form of protection - being reduced by over 98 %.

Through a change in the way we plan and deliver our work, our people are now working on track whilst in line blocks or possessions, which means the chance of a near miss is over 28 times less likely. Our focus is now on adding an extra layer of safety through the use of additional protection. This will move us up the protection hierarchy and keep our people on track even safer.

We are running a dedicated Track Worker Safety event on 4 May (14.00 – 15.30) as we want to keep you updated and consider how we can continue to work together to make the railway a safer place to work.

Please register for the Zoom event [here](#), after which we'll send you joining instructions.

## Solely Southern region

### Wellbeing and mental health



Are you a compassionate person who would like to learn more about wellbeing and mental health? If so, are you interested in becoming a Mental Health First Aider or having a refresher course?

Our Mental Health First Aiders are available to support and listen to those with concerns while ensuring they signpost them to the appropriate support. Through learning about the facts and myths surrounding Mental Health, our Mental Health First Aiders can readily promote the support available and, together, help break the stigma regarding mental health issues. Training courses are available and Mental Health First Aid England recommend that Mental Health First Aiders and MHFA Champions attend a refresher course every three years.

## MHFA England

Recent feedback from delegates indicates that the latest two-day, face-to-face training course produced great engagement and received extremely positive feedback. Those who attended the training feel more confident in helping someone experiencing a mental health problem, through learning to spot the early signs of poor mental health and help stop a mental illness from getting worse.

All the information on the course, training roles and how to apply is available on the Wellbeing Hub via this [link](#).

### Mental wellbeing discussion tool - part of stress awareness month



We have developed a mental wellbeing discussion tool (MWDT) to aid conversations between colleagues and line managers. The tool focuses on not just work-related stress factors, but also non-work-related stress factors and has been designed to make it easier for colleagues to discuss their concerns and issues and agree an action plan to improved mental wellbeing.

The standard that helps colleagues, and their line managers identify the causes and manage the risks of reduced mental wellbeing, both in and outside of work has been republished. This is because the previous standard did not consider the potential impact of non-work-related factors on mental wellbeing at work, even though the two are largely inseparable. Equally, we know that mental wellbeing is much more diverse than 'stress' and the new [standard](#) is more inclusive of this.

We will be holding virtual briefing sessions detailing the purpose of the standard, its changes, and how to complete a MWDT throughout April. To find out when these are, read the [story](#) on MyConnect and click on the relevant link to take part.

### The latest edition of Front Line Focus is out

Here's a [link](#) to the latest edition of Front Line Focus, which highlights the importance of attending your medical.

Please send your feedback on the newsletter to [southernregioncomms@networkrail.co.uk](mailto:southernregioncomms@networkrail.co.uk)



# Our Safety Update

everyone home safe every day

22 April 2022

## Severe hand injury



This Safety Alert came from Scotland Railway at the end of March but the incident could have happened anywhere.

As the driver of a Heavy Goods Vehicle (HGV) was securing a load on the back of the vehicle, they suffered a severe hand injury when part of the load shifted and trapped their hand.

The project works involved the removal of an existing bridge structure. Once the last bridge span section had been dismantled and loaded onto the wagon via crane, the next lifting sequence was to remove the spreader beam from the crane and place it adjacent to the span.

The engineering contractor's two slinger signallers landed the spreader beam (essentially a 5m long steel beam) onto the HGV while the driver applied a ratchet strap at one end to secure the load. Once the strap was applied, the chains were unhooked, and the crane slewed away to start the next lift.

The driver continued to secure the beam; however, they didn't think the beam was sitting quite right so tried to move it by hand. It was at this point the beam rolled over at the unsecured end, trapping their fingers between the beam and the bed of the HGV, amputating one finger, and fracturing another.

The site team immediately responded and provided first aid, contacted emergency services, and made the area safe.

### Discussion points

- Do you always plan your lifting operations? Lifting operations must always be carefully planned to ensure they are carried out safely. The plan should be recorded in a safe system of work (lift plan) and communicated to everyone involved. Also, think about the consequences if something were to go wrong - this was a big, heavy item. Why put your hand in danger?
- Is everyone on the team competent and trained to carry out the operation? Only properly trained and competent personnel are permitted to sling loads and attach/detach lifting accessories
- Is there sufficient supervision in place? The right level of supervision must be in place for lifting operations, reflecting the degree of risk and personnel involved in the operation
- Do you have load guidance equipment available for lifting operations? Teams should ensure that load guidance equipment (tag lines) are being utilised to safely guide and land suspended loads, and that measures are in place to protect persons not involved in the lifting operations (For example in exclusion zones)
- Do you know what the rules for lifting are? For example, materials must always be loaded at equal heights on flat bed vehicles to ensure they can be secured properly (usually via ratchet straps). Loads must be fully secured prior to detachment of lifting accessories to eliminate the risk of movement.

We'd love to know what topics you'd like covered in Our Safety Update, so please let us know



The key word is 'home'



## everyone home safe every day

There have been a few mentions this week about accidents and incidents that have happened after a job has finished, either during the clearing up stages or on the journey home.

Our vision is for everyone to go 'home safe every day', not just 'finish the job safe'.

In fact around 25% of slips, trips and falls happen when people aren't at a worksite, with many of them happening when they are not actively engaged in a task.

So what can we do to ensure these accidents don't happen and why do you think the period between the end of a job and walking through your front door is so dangerous?

Here are some real examples of accidents and incidents that happened after a shift had finished; it please discuss in your teams possible ways of avoiding what prevented the injured person getting home safe.

- Road traffic accident. In this case, our colleagues was on a night shift but it wasn't particularly late when they finished the job. They drove away from the work site and were almost home when they collided with a lamp post just metres from their front door.
- Slips, trips or falls. (The biggest causes of lost time injuries across the region). After completing earlier points maintenance during a night shift, a member of staff was returning back to the access point and the team's vehicle. He tripped on some wooden sleepers that were broken in places and uneven. Whilst trying to break his fall, he hit his right hand and the area around his thumb became bruised and swollen.

### Discussion points

- What do you think caused these accidents?
- What could have prevented these outcomes?
- If you have had or witnessed an accident, did you report it? If not, how can we learn from what happened and improve?

### Watch out for giant hogweed



Although not native to the UK, Giant Hogweed can be found pretty much everywhere, particularly around river banks. It can grow really tall (up to 5m), with leaves up to 1.5m wide. It flowers in June and July. It is illegal to plant or cause the spread of it in the wild.

The key thing to know about it is that it contains natural chemicals (furocoumarin) which can cause severe blistering and irritation of the skin. Coming into contact with the plant or even a minute amount of sap can cause blistering of the skin when exposed to sunlight and can make the skin sensitive for months or even year after.

#### What to do if you brush through Giant Hogweed

- Wash the area thoroughly
- Seek medical advice
- Do not expose the area to sunlight for a few days

Here are some recent examples of a colleague's encounter with the plant.



Please send your feedback on the newsletter to [southernregioncomms@networkrail.co.uk](mailto:southernregioncomms@networkrail.co.uk)



# Safety Advice

Action required following a serious incident



everyone  
home safe  
every day

## Baselight 600MX incident

Ref:	WWA22-30
Date of Issue:	3 May 2022
Location:	Swindon
Contact:	Jamie Salmon



### Overview Accidents Incidents and injuries to staff & contractors

Whilst using the Baselight 600 MX lighting tower to illuminate a rail defect worksite the tower has toppled over narrowly missing a welder on site.

An investigation was undertaken and it was found that one of the leg pins that holds the cross bar supporting bracket in place has come loose and subsequently caused the lighting tower to be unstable and fall over (Manufacturer upgrading the design)

### Immediate Action Required:

#### Instruction

ALL leg pins to be inspected before use to ensure that the Eclip that holds the pin in place is present and securely located in the recess.

#### Discussion points

- 1) Has the lighting tower been placed in a suitable location?
- 2) Has the plant been inspected before use?
- 3) Has the Eclip been inspected to confirm it is locked in place in the recess of the location pin.
- 4) is placing the plant in quarantine for repair a sufficient action or does it need to be reported as an incident so an investigation can be undertaken to find the route cause?



Part of our group of  
Safety Posters



#### DISTRIBUTION

- All Region
- Regional Exec and All SHE Professionals

- All Wales Route
- Wales Operations
- Wales Maintenance

- All Western Route
- Western Operations
- Western Maintenance

- Capital Delivery
- DEAM / Commercial and Support Functions

W&W v0.2

02-2021



## TM Operative struck by vehicle.

No 433

March 2022



# Safety

**Date:** February 14th

**Time:** 21:05

**Location** A96 East of Dramlachs Crawler Lane.

### Details of Incident:

TM Operative was positioned on the western side of the site, facing the eastbound traffic, where he was manually controlling the signals as part of the convoy operation. At 20:10 as the convoy was travelling back, bringing through the traffic westbound, he noticed a car approaching the closure at speed. There were no other vehicles queuing at this point. The Ops first instinct was to wave to try and slow the vehicle down. The vehicle entered the closure to the right-hand side of the traffic signal and made contact with the Operative.

Signage was in place and the site was set up for 10mph convoy working commencing at 19:30 on the evening of the incident. The weather was cold but dry and the road surface was slightly wet but visibility was good on the approach.

Operative contacted the Police who arrived on site and conducted their investigation. Arrangements were then made to take the Operative to A&E, where it was determined that the operative sustained a couple of broken ribs and a fracture to their knee.

### Outcome of Incident.

To mitigate risk of a similar occurrence, the TM company have issued a toolbox talk to all their employees to be more aware of poor driving behaviour and to ensure their personal safety as the primary consideration at all times.

### Items for consideration

- Maximising sight lines (from both points of view) by considering any bends or hills or hidden dips.
- Sign reflectivity being at an acceptable level. (BEAR TM Gang Pack pg.10 and 11. Or in Ch8, Part 2 Operations pg.204 and 205).
- Correct size of signs used (900mm minimum for Single Carriageways 50mph and above).
- Visibility of the signs; Not placed in long grass, not hidden by permanent road signs or out of full sight, preferably not on an inclined verge or behind VRS.
- Initial double banked Speed Limit signs to reduce traffic speed and repeaters throughout the site.
- Additional signs may have been required to suit the road layout.

experience that delivers





# Shared Learning Bulletin

## Faulty Drilling Rig Interlock

### Faulty Interlock

During a site investigation, the cage interlock on the rotary drilling rig was checked during a CDM-A site visit. When checked, it was found that each rig cage door could be opened approximately 10-12 inches before the interlock operated to stop the rotating parts of the rig, leaving an opening of 20-24 inches.

The Provision and Use of Work Equipment Regulations (PUWER)<sup>1</sup> requires the movement of any dangerous machinery to be stopped before any person enters a 'danger zone'.

The failure of the interlock meant there was an increased potential of entanglement with the rotating parts of the drilling rig i.e. the 'danger zone'.



### Daily Inspections

The Lead Driller was asked by the CDM-A for the daily PUWER check sheet for the rig, however, it was not available.

HSE guidance<sup>2</sup> highlights that work equipment should be inspected to make sure that it has been correctly installed and is operating safely.

### Action Taken

As the interlock was found to be faulty and there was not a valid inspection check sheet, works were stopped onsite. The drilling rig was not used until the faulty interlock had been rectified.

### Key Learning

- The Principal Contractor must ensure that daily plant checks have been carried out prior to any plant being used onsite.
- Where any faults are found with plant prior to or during operation, then the equipment must be quarantined until the fault has been rectified.
- The operation of interlocks should be part of the daily checks and maintained in accordance with the manufacturer's instructions. As this is a key safety function for the drill rig.

1 - <https://www.legislation.gov.uk/uksi/1998/2306/regulation/11/made>

2 - <https://www.hse.gov.uk/pubns/priceid/122.pdf>

Accountable Person: Jonathan King  
Entity/ function: UK Land and Property

Issue Date: 16/12/2021

**nationalgrid**



**How can you tell if a Lantra sign off sheet is real?**

When you receive a Lantra NHSS 10B / 12ABCD "Sign off sheet" what should you check to verify its valid? Lantra advises you complete a quick 3 step check to ensure what you are looking at is legitimate.

1. **Is there a Unique Code?**
2. **Are all the Learner, Trainer/Assessor and Provider details completed?**
3. **Is the sheet valid within the time granted?**

Every sheet has a unique identifier located in the top right.

If this is missing or doesn't look right contact Lantra and verify it is a legitimate sign off sheet.

The sign off sheet must be **fully** completed and signed off by the Learner, Instructor or Assessor (depending on the activity) and have the Training Provider details. If this is missing or something doesn't look right, contact Lantra and verify it is a legitimate sign off sheet

Sign off Sheets are only valid for specific amount of time depending on whether its training or assessment, always check the sheet to verify.

In this example this sign off sheet is valid for 6 months from the date the activity was signed off.

You will need to check the sign off sheet is within the time granted by checking these dates.

If the dates look tampered with, contact Lantra to verify it is a legitimate sign off sheet

Always check the details, if something doesn't look right, don't take them on face value contact Lantra, its quick and easy to verify.

02476 696996  
[Sector.Schemes@Lantra.co.uk](mailto:Sector.Schemes@Lantra.co.uk)



## P&D Specialist Services Ltd

### Safety Alert

### Hoist Body potential separation from vehicle

**Subject**

Potential catastrophic failure of hoist

**Reported Date**

05/05/2022

**Equipment**

CTE B-LIFT 20 J

**P&D Contact**

Rich Hallam

Tel: 07585 665 472

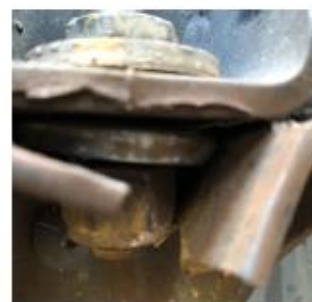
Email: rich.hallam@p-dss.co.uk

**BACKGROUND INFORMATION**

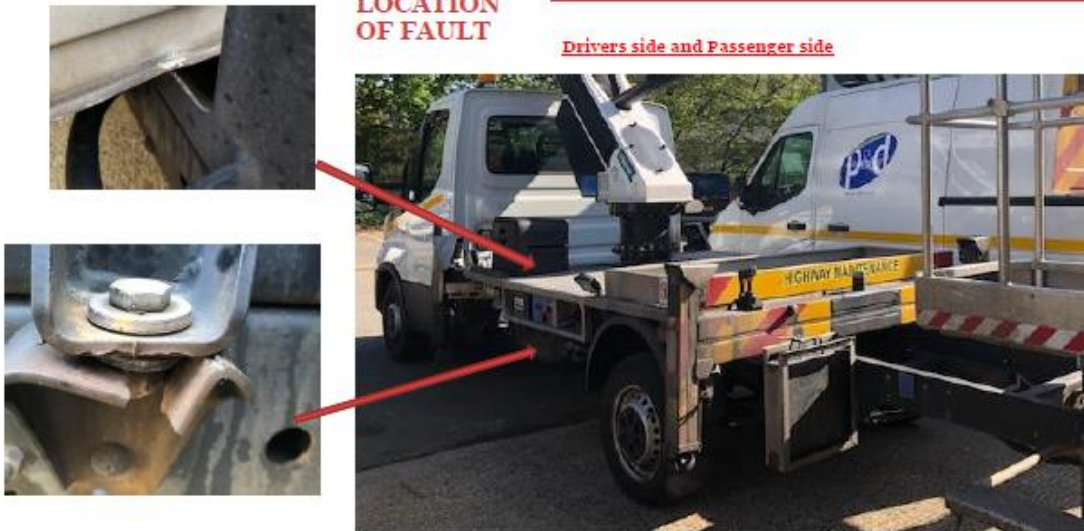
During a routine pre vehicle inspection of a hired MEWP (CTE B-lift 20 J) the operative noticed an irregularity to the positioning on the yellow markings indicating the alignment of the bolts securing the hoist to the body of the vehicle.



Upon further inspection the operative discovered a significant failing associated to the bracket that potentially connects the Hoist to the chassis of the vehicle, also noted was the movement of the hoist bed pressing against the cab



Document Number P&DSA001



### LOCATION OF FAULT

Drivers side and Passenger side

### POTENTIAL KEY DANGER

Potential separation of the hoist body from the vehicle chassis resulting in hoist body falling away, this has the potential to cause a major incident putting operatives and the public in danger.

#### Action taken

- P&D have contacted the representative of the company who have supplied the MEWP
- Vehicle has been quarantined and removed from service
- Safety alert issued internally and externally

#### Learning

- This highlights the importance of a thorough vehicle check prior to using any equipment

\*All the above information is the view of P&D Specialist Services Ltd and not the manufactures or suppliers of the equipment, any communications from the manufactures or suppliers will be shared if relevant in due course.

Document Number P&DSA001

## Other Safety Information



## Safety 3-4-3 and Fleet 3-4-3

Safety 3-4-3 and Fleet 3-4-3 will be published and distributed at a later date.