

March 2019 ACS Rail Updates

Welcome to the March 2019 edition of ACS Rail updates. The following pages contain summaries of updates which may be relevant to you. Please brief and distribute this information to the relevant people as per your internal procedures.

The ACS Team

Content	Page
Changes to Network Rail Standards	2
Making sure you are aware of the relevant standards.....	2
New and Up-Issued Standards.....	3
Withdrawn, Closed and Superseded Documents.....	4
Emergency Changes (Also Known as Letters of Instruction)	5
RSSB - Standards and the rail industry	7
Railway Group Standards (RGSs).....	7
Rule Book (GE/RT8000)	7
GE/RM8000 Master Module Manual	7
Controlled Document List 02 Mar 2019	8
Network Rail Safety Central – Information Section	17
Code of Conduct	17
Safety Bulletins as of 4 th March 2019	17
Lessons Learnt / Shared Learning.....	18
Health & Wellbeing.....	18
Risk Management	18
Safety Films	18
Resource Library.....	18
SCO 24:7 (Supply Chain – Operations) Telephone	19
Emergency.....	19
To report a crime.....	19
Useful Links	20
Other Bulletins	22
Planning and Delivering Safe Work	22
Working at Height.....	22
Track Safety Alliance.....	22
Southern Shield.....	22
Fatigue Improvement Programme.....	23
Safety 3-4-3 and Fleet 3-4-3	40
Issue 61 Spring 2019	40

BRIEFING REQUIREMENTS:

NOTE: Contractors are responsible for arranging and undertaking and recording their own Safety and Awareness Briefings in accordance with their own processes and procedures.



Changes to Network Rail Standards

Issue 111: 02nd March 2019 – 31st May 2019

Making sure you are aware of the relevant standards

Every employee has a duty to comply with any mandatory Network Rail company standards and procedures relevant to their role. It is vital therefore that all employees are aware of which standards are relevant to their area of work, and where to find them. Network Rail Standards can be accessed via:

- For users internal to Network Rail: Network Rail Standards pages on Connect
- For users external to Network Rail: all enquiries should be directed to IHS Customer Care on 01344 328 300 or email customer.support@ihs.com

Other Information

Network Rail Standards Subscriptions

IHS Global Ltd
Phone: 01344 328000

Network Rail Standards Management

Publications Manager

Nicole Lockwood
Phone: 01908 782 481

Network Rail Standards Hard Copy Document Centre

IHS Retail
Phone: 01344 328039
Fax: 01344 328005 or email: emeastore@ihs.com

Railway Group Standards

Rail Safety & Standards Board Enquiry Desk
Phone: 020 3142 5400 Website www.rssb.co.uk

Network Rail Technical Drawings

National Records Group
Email: nrgcivils@networkrail.co.uk

You must make sure that the team and the activities for which you are responsible comply with the Network Rail company standards and procedures.

By doing this, you will be complying with the Network Rail Health & Safety Management System and relevant legislation.

The following pages contain summary extracts of the changes / new issue to the Network Rail Company Standards which may be relevant to you.

New and Up-Issued Standards Issue 111 - 02 Mar 2019

References	Title	Replaces
NR/GN/INI/0301 Issue 1	Integrated Engineering Lifecycle for Projects Guidance Manual	New at Issue 111
NR/GN/OTK/6201 Issue 1	How to Manage Invasive, Non-Native and Harmful Plants	New at Issue 111
NR/GN/OTK/6202 Issue 1	Protecting Railway Asset During Vegetation Work	New at Issue 111
NR/GN/SIG/CAT005 Issue 53	Index of Network Rail Documents Relating to Signalling and Communications Equipment	NR/GN/SIG/CAT005 Issue 52
NR/L2/CIV/084 Issue 2	Management of Tunnels	RT/CE/S/084 Issue 1
NR/L2/CIV/086 Issue 9	Management of Earthworks Manual	NR/L2/CIV/086 Issue 8
NR/L2/CIV/169 Issue 1	Design of Tunnels	New at Issue 111
NR/L2/ENV/015 Issue 8	Environment and Social Minimum Requirements for Projects – Design and Construction	NR/L2/ENV/015 Issue 6*
NR/L2/INI/0300 Issue 1	Integrated Engineering Lifecycle for Projects (IELCP)	New at Issue 111
NR/L2/INI/P3M/102 Issue 3	Investment Decision Framework and Programme Delivery Lifecycle	NR/L2/INI/P3M/102 Issue 2
NR/L2/INI/P3M/105 Issue 2	Assurance of Project, Programme and Portfolio Delivery	NR/L2/INI/P3M/105 Issue 1
NR/L2/OHS/003 Issue 7	Fatigue Risk Management	NR/L2/OHS/003 Issue 6
NR/L2/OPS/250 Issue 7	Network Rail National Emergency Plan	NR/L2/OPS/250 Issue 6
NR/L2/OTK/5100 Issue 2	Boundary Measures Manual	NR/L2/OTK/5100 Issue 1
NR/L2/OTK/5201 Issue 2	Lineside Vegetation Management Manual	NR/L2/OTK/5201 Issue 1
NR/L2/RSE/0005 Issue 3	Product Design for Reliability	NR/L2/RSE/0005 Issue 2
NR/L2/SCO/203 Issue 4	Loading and securing of infrastructure traffic	NR/L2/NDS/203 Issue 3
NR/L2/SIG/11400 Issue 7	HPSS Handbook	NR/L2/SIG/11400 Issue 6
NR/L2/SIG/11704 Issue 4	Signalling Requirements for the Application Design and Management of Points	NR/L2/SIG/11704 Issue 3
NR/L2/SIG/14201 Issue 4	Signalling Risk Assessment Handbook	NR/L2/SIG/14201 Issue 3
NR/L2/SIG/19820 Issue 3	Signalling Product Specification	NR/L2/SIG/19820 Issue 2
NR/L2/SIG/30009 Issue 16	Signalling Principles Handbook	NR/L2/SIG/30009 Issue 15
NR/L2/SIG/CAT003 Issue 10	Index of Network Rail Documents Relating to Signalling Equipment	NR/L2/SIG/CAT003 Issue 9
NR/L2/TEL/30182 Issue 2	Secure Configuration and Management of Network Rail Telecom Internet Protocol (IP) Networks, Systems and Devices	NR/L2/TEL/30182 Issue 1
NR/L2/TRK/012 Issue 3	Railway Crossings	RT/CE/S/012 Issue 2
NR/L2/TRK/3100 Issue 5	Topographic, Engineering, Land and Measured Building Surveying – Strategy and General	NR/L2/TRK/3100 Issue 4
NR/L3/CIV/151/F010 Issue 13	Index of Standard Designs and Details for Building and Civil Engineering Works	NR/L3/CIV/151/F010 Issue 12
NR/L3/CIV/170 Issue 1	Assessment of Tunnels	New at Issue 111
NR/L3/ELP/27140 Issue 4	Application of Short-Circuits for Conductor Rail Isolations	NR/L3/ELP/27140 Issue 3
NR/L3/ELP/27240 Issue 8	Distribution Work Instructions	NR/L3/ELP/27240 Issue 7
NR/L3/INF/02224 Issue 2	Sharing Framework for Information	NR/L3/INF/02224 Issue 1
NR/L3/INI/P3M/127 Issue 2	Peer Reviews of Project and Programme Delivery	NR/L3/INI/P3M/127 Issue 1
NR/L3/INI/P3M/128 Issue 2	Project, Programme and Portfolio Management (P3M), Commercial and Engineering Functions Assurance	NR/L3/INI/P3M/128 Issue 1
NR/L3/INI/P3M/133 Issue 1	Consolidated Assurance of Project, Programme and Portfolio Delivery	New at Issue 111
NR/L3/OPS/002 Issue 8	Driving Cab Passes	NR/L3/OPS/002 Issue 7
NR/L3/OPS/045 Issue 6	National Operating Procedures Index	NR/L3/OPS/045 Issue 5
NR/L3/OPS/251 Issue 2	Unmanned Aircraft System (Drone/UAS) Operations	NR/L3/OPS/251/1.1 Issue 1
NR/L3/RMVP/40035 Issue 1	Rail Vehicle Welding	New at Issue 111
NR/L3/SCO/308 Issue 3	Loading Manual for Infrastructure Traffic	NR/L3/SCO/308 Issue 2
NR/L3/SCO/311 Issue 4	Supply Chain Operations, T&RS and OTM Engineering and Management Manual	NR/L3/SCO/311 Issue 3
NR/L3/SCO/313 Issue 5	On-Track Machines (OTMs) Driver and Operations Standards Manual	NR/L3/SCO/313 Issue 4
NR/L3/SIG/11303 Issue 8	Signalling Installation	NR/L3/SIG/11303 Issue 7
NR/L3/TRK/003 Issue 29	Index of Track Engineering Forms	NR/L3/TRK/003 Issue 28
NR/L3/TRK/3241 Issue 2	Marking of Track for Tamping Machines	NR/L3/TRK/3241 Issue 1
NR/L3/TRK/7006 Issue 1	Creation and Application of Initial ESR Design	New at Issue 111

* Issue 7 was published June 2018, then withdrawn and Issue 6 reinstated.

Withdrawn, Closed and Superseded Documents

References	Title	Replaced by/Status
NR/GN/SIG/CAT005 Issue 52	Index of Network Rail Documents Relating to Signalling and Communications Equipment	NR/GN/SIG/CAT005 Issue 53
NR/L2/CIV/086 Issue 8	Management of Earthworks	NR/L2/CIV/086 Issue 9
NR/L2/ENV/015 Issue 7	Environment and Social Requirements – Design and Construction	NR/L2/ENV/015 Issue 8
NR/L2/INI/P3M/102 Issue 2	Governance for Railway Investment Projects (GRIP) – Programmes	NR/L2/INI/P3M/102 Issue 3
NR/L2/INI/P3M/105 Issue 1	Assurance of Project, Programme and Portfolio (P3M) Investment	NR/L2/INI/P3M/105 Issue 2
NR/L2/OHS/003 Issue 6	Fatigue Risk Management	NR/L2/OHS/003 Issue 7
NR/L2/OPS/250 Issue 6	Network Rail National Emergency Plan	NR/L2/OPS/250 Issue 7
NR/L2/OPS/251 Issue 1	Air Operations Manual	NR/L3/OPS/251 Issue 2
NR/L2/OTK/5100 Issue 1	Boundary Management Manual	NR/L2/OTK/5100 Issue 2
NR/L2/OTK/5201 Issue 1	Lineside Vegetation Management Manual	NR/L2/OTK/5201 Issue 2
NR/L2/RSE/0005 Issue 2	Product Design for Reliability	NR/L2/RSE/0005 Issue 3
NR/L2/NDS/203 Issue 3	Loading and Securing of Infrastructure Traffic	NR/L2/SCO/203 Issue 4
NR/L2/SIG/11400 Issue 6	HPSS Handbook	NR/L2/SIG/11400 Issue 7
NR/L2/SIG/11704 Issue 3	Signalling Requirements for the Application Design and Management of Points	NR/L2/SIG/11704 Issue 4
NR/L2/SIG/14201 Issue 3	Signalling Risk Assessment Handbook	NR/L2/SIG/14201 Issue 4
NR/L2/SIG/30009 Issue 15	Signalling Principles Handbook	NR/L2/SIG/30009 Issue 16
NR/L2/SIG/CAT003 Issue 9	Index of Network Rail Documents Relating to Signalling Equipment: Mechanical & Electrical Drawings	NR/L2/SIG/CAT003 Issue 10
NR/L2/TEL/30182 Issue 1	Secure Configuration and Management of Network Rail Telecom Internet Networks, Systems and Devices	NR/L2/TEL/30182 Issue 2
RT/CE/S/012 Issue 2	Cast Austenitic Manganese Steel Crossings	NR/L2/TRK/012 Issue 3
NR/L2/TRK/3100 Issue 4	Topographic, Engineering, Land and Measured Building Surveying – Strategy and General	NR/L2/TRK/3100 Issue 5
NR/L3/CIV/151/F010 Issue 12	Index of Standard Designs and Details for Building and Civil Engineering Works	NR/L3/CIV/151/F010 Issue 13
NR/L3/ELP/27140 Issue 3	Application of Short-Circuits for Conductor Rail Isolations	NR/L3/ELP/27140 Issue 4
NR/L3/ELP/27240 Issue 7	Distribution Work Instructions	NR/L3/ELP/27240 Issue 8
NR/L3/INF/02224 Issue 1	Sharing Framework for Information	NR/L3/INF/02224 Issue 2
NR/L3/INI/P3M/127 Issue 1	Peer Reviews of Project, Programme and Portfolio (P3M) Investment	NR/L3/INI/P3M/127 Issue 2
NR/L3/INI/P3M/128 Issue 1	Project, Programme and Portfolio (P3M) Professions Assurance	NR/L3/INI/P3M/128 Issue 2
NR/L3/OPS/002 Issue 7	Driving Cab Passes	NR/L3/OPS/002 Issue 8
NR/L3/OPS/045 Issue 5	National Operating Procedures Index	NR/L3/OPS/045 Issue 6
NR/L3/OPS//251/1.1 Issue 1	Unmanned Aircraft System (Drone/UAV) Operations - Managing the Operational Risk	NR/L3/OPS//251 Issue 2
NR/L3/SCO/308 Issue 2	Loading Manual for Infrastructure Traffic	NR/L3/SCO/308 Issue 3
NR/L3/SCO/311 Issue 3	Supply Chain Operations, T&RS and OTM Engineering and Management Manual	NR/L3/SCO/311 Issue 4
NR/L3/SCO/313 Issue 4	On-Track Machines (OTMs) Driver and Operations Standards Manual	NR/L3/SCO/313 Issue 5
NR/L3/SIG/11303 Issue 7	Signalling Installation	NR/L3/SIG/11303 Issue 8
NR/L3/TRK/003 Issue 28	Index of Track Engineering Forms	NR/L3/TRK/003 Issue 29
NR/L3/TRK/3241 Issue 1	Marking of Track for Tamping Machines	NR/L3/TRK/3241 Issue 2
RT/CE/S/084 Issue 1	Management of Existing Tunnels	NR/L2/CIV/084 Issue 2

Emergency Changes (Also Known as Letters of Instruction)

To access any active Emergency Change you need to refer to its associated Network Rail Standard. The front page of the standard will provide details of the relevant change. When using the online service there will be an active link to each relevant change.

Emergency Changes published since the last report are highlighted in italic; historic changes (where text has been crossed out) will be removed next publication. Please note, some changes may stay current after the stated Expiry Date

Reference	Title	Issue	Date
NR/BS/LI/415	Standard/control document affected: NR/L3/TEL/30170 (Issue 1) Work Instruction for the maintenance of public address voice alarm (PAVA) equipment	1	10/12/2018
NR/BS/LI/413	Standard affected: NR/L2/ELP/27229 (Issue 2), Specification for remote control equipment for electrical distribution systems	1	04/01/2019
NR/BS/LI/410	Standard affected: NR/L2/ELP/27229 (Issue 2), Specification for remote control equipment for electrical distribution systems	1	14/12/2018
NR/BS/LI/409	Standard/control document affected: NR/L2/OPS/251/1.1 (Issue 1), Unmanned Aircraft System (Drone/UAV) Operations - Managing the Operational Risks - SUPERSEDED BY NR/L3/OPS/251 ISSUE 2 HISTORIC ON 02 MARCH 2019	1	18/09/2018
NR/BS/LI/408	Standard/control document affected: NR/L3/ELP/29987 [Working On or About 25 kV a.c Electrified Lines] SUPERSEDED BY NR/L3/ELP/29987 HISTORIC ON 01 JUNE 2019	1	16/07/2018
NR/BS/LI/407	Standard/control document affected: NR/L2/SIG/11704 (Issue 3), Signalling Requirements for the Application Design and Management of Points – HISTORIC ON 01 JUNE 2019 SUPERSEDED BY NR/L2/SIG/11704 ISSUE 4	1	04/06/2018
NR/BS/LI/406	Standard / control document affected: NR/L3/ELP/29987 (Issue 04), [Working on or about 25 kV A.C. Electrified Lines] SUPERSEDED BY NR/L3/ELP/29987 HISTORIC ON 01 JUNE 2019	1	20/04/2018
NR/BS/LI/405	Standard/control document affected: NR/L2/OPS/250 (Issue 6), [Network Rail National Emergency Plan] - SUPERSEDED BY NR/L2/OPS/250 ISSUE 7 HISTORIC ON 02 MARCH 2019	1	09/03/2018
NR/BS/LI/404	Standard/control document affected: NR/L2/TRK/053 (Issue 7), Inspection and Repair Procedures to Reduce the Risk of Derailment at Switches.	1	20/03/2018
NR/BS/LI/401	Standard affected: NR/L3/ELP/29987 (Issue 4), Working on or About 25 kV A.C. Electrified Lines SUPERSEDED BY NR/L3/ELP/29987 HISTORIC ON 01 JUNE 2019	1	21/12/2017
NR/BS/LI/399	Standard affected: NR/L2/ELP/21087 (Issue 07) SUPERSEDED BY NR/L2/ELP/21087 Issue 8 HISTORIC ON 1 DECEMBER 2018	4	08/12/2017
NR/BS/LI/398	Standard Affected: NR/L3/MTC/MG0221 (Issue 4) Network Operations non-operations staff management self-assurance procedure SUPERSEDED BY NR/L3/MTC/MG0221 Issue 5 HISTORIC ON 1 DECEMBER 2018	4	23/08/2017
NR/BS/LI/397	Standard/control document affected: NR/SP/CTM/016 Issue 1, Competency & Training in Fixed Plant Engineering	1	20/04/2018
NR/BS/LI/393	Standard/control document affected: NR/L3/ELP/29987 (Issue 4). Working on or about 25 kV A.C. Electrified Lines SUPERSEDED BY NR/L3/ELP/29987 HISTORIC ON 01 JUNE 2019	1	19/06/2017
NR/BS/LI/394	Standard/control document affected: NR/L2/SIG/11201 Module B11 (Issue 4). Interlockings 3€[€] Electronic Interlocking Guidelines SUPERSEDED BY NR/L2/SIG/11201 ISSUE 11 HISTORIC ON 01 DECEMBER 2018	4	28/04/2017
NR/BS/LI/389	Standard affected: NR/L2/SIG/30009 (Issue 11). Signalling Principles Handbook	1	13/02/2017
NR/BS/LI/383	Standard affected: NR/L2/CTM/021 (Issue 4). Competence and Training	2	08/12/2016
NR/BS/LI/372	Standards affected: NR/L2/ELP/27404 (Issue 1), Configuration Management and change to protection and control systems— HISTORIC ON 4 DECEMBER 2018	2	04/12/2017
NR/BS/LI/371	Standard affected: NR/L2/CIV/162 (Issue 2). Platform Extensions. Location of metal structures on Third Rail area Station Platforms	1	02/03/2016
NR/BS/LI/370	Standard affected: RT/E/S/21131 (Issue 1). Warning and other signs for a.c. and d.c. electrified lines SUPERSEDED BY NR/L2/ELP/21131 HISTORIC ON 1 JUNE 2019	1	26/10/2016
NR/BS/LI/367	Standard affected: NR/L3/ELP/29987 (Issue 4). Working On or About 25kV A.C. Electrified Lines SUPERSEDED BY NR/L3/ELP/29987 HISTORIC ON 1 JUNE 2019	1	07/01/2016
NR/BS/LI/366	Standard affected: NR/L2/ELP/27229 (Issue 2). Specification for remote control equipment for electrical distribution systems— WITHDRAWN 4 DECEMBER 2018. SUPERSEDED BY NR/BS/LI/410	2	04/12/2017
NR/BS/LI/365	Standard affected: NR/L3/TRK/4004 (Issue 2). Switch and Crossing Assemblies	2	16/06/2016
NR/BS/LI/349	Standards affected: NR/L2/CIV/003 Engineering Assurance of Building and Civil Engineering Works [Issue 4] SUPERSEDED BY NR/L2/CIV/003 HISTORIC ON 2 March 2019	1	02/02/2015
NR/BS/LI/348	Requirements for undertaking the roles of Lead Examiner and Examining Engineer for the examination of Tunnels.	1	23/02/2015
NR/BS/LI/347	Standard affected: NR/L2/CTM/028 (Issue 2). Competence and Training	1	16/01/2015
NR/BS/LI/342	Standard affected: NR/SP/ELP/21028 (Issue 3). Specification for ancillary wiring of electrical distribution equipment on A.C. and D.C. electrified lines	1	13/04/2016
NR/BS/LI/340	Standards affected: NR/L3/TRK/4004 (Issue 2). Switch and crossing assemblies	1	07/01/2015
NR/BS/LI/331	Requirements for parapet heights on over bridge and footbridge structures spanning overhead line electrification Equipment	2	07/08/2015
NR/BS/LI/328	Standard affected: NR/SP/ELP/21104 (ISSUE 2). Design and Installation of Electric Track Equipment for DC Electrified Lines	1	28/03/2014
NR/BS/LI/326	Standard affected: NR/L2/OHS/050 (Issue 4), Sentinel Scheme Rules	1	16/04/2014
NR/BS/LI/322	Standards affected: NR/L2/TRK/5100. Issue 2. Management of Fencing and Other Boundary Measures SUPERSEDED BY NR/L2/OTK/5100 HISTORIC ON 1 APRIL 2019	1	28/03/2014
NR/BS/LI/306	Standard affected: NR/L1/CIV/032: The Management of Structures [Issue 2]	2	26/09/2014

Standards Updates



Reference	Title	Issue	Date
NR/BS/LI/305	Standards Affected: NR/L2/TRK/001 Issue 6. NR/L2/TRK/2102 Issue 6. NR/L2/TRK/3038 Issue 5. NR/L2/TRK/0032 Issue 5. NR/L2/TRK/0132 Issue 6. NR/L3/TRK/3510/A01 Issue 1. NR/L3/TRK/3510/B01 Issue 1. NR/L3/TRK/1015 Issue 2	2	31/01/2014
NR/BS/LI/292	NR/L3/TRK/1010 (Issue 2). Management of responses to extreme weather conditions at structures, earthworks and other key locations	1	18/07/2013
NR/BS/LI/283	Standard affected: NR/L3/TRK/4004 (Issue 2). Switch and Crossing Assemblies	2	14/09/2015
NR/BS/LI/282	Standard affected: NR/ELP/3091 (Issue 2) - DC Electrified Lines Working Instructions SUPERSEDED BY NR/L3/ELP/3091 ISSUE 4 HISTORIC ON 1 DECEMBER 2018	4	24/01/2013
NR/BS/LI/281	Standard affected: NR/SP/ELP/21060 (Issue 2). Issue of Safety Documentation for Work on 650/750 V dc Apparatus	1	24/01/2013
NR/BS/LI/256	Standard affected: NR/SP/ELP/27243 (Issue 1). Specification for Signalling Power Supplies	2	24/10/2016
NR/BS/LI/217	Standards affected: NR/SP/ELP/27224 [Issue: 2] Specification for the installation of cable routes forming part of the traction distribution system	4	25/01/2016
NR/BS/LI/193	Standards affected: NR/L3/CIV/006 Part 11A: Reporting and recording examinations of Structures in CARRS [Issue 2] SUPERSEDED BY NR/L3/CIV/006 – HISTORIC ON 1 APRIL 2020	2	03/09/2014
NR/BS/LI/185	Standard affected: NR/L2/TRK/5100 (Issue 2). Management of Fencing and Other Boundary Measures SUPERSEDED BY NR/L2/OTK/5100 HISTORIC ON 1 APRIL 2019	3	03/03/2017
NR/BS/LI/174	Standard affected: NR/ELP/3091 (E 2) - DC Electrified Lines Working Instructions SUPERSEDED BY NR/L3/ELP/3091 ISSUE 4 HISTORIC ON 1 DECEMBER 2018	4	19/04/2010
NR/BS/LI/163	Standard affected: RT/CE/S/130 (Issue 1). Flash-Welded Rails: Site Welded Strings	2	01/10/2010
NR/BS/LI/154	Use Of The Geismar THR542 Lightweight Stressing Equipment In Tandem. Standard affected: NR/L2/TRK/3011 (Issue 6)	1	18/01/2010
NR/BS/LI/146	Standard affected: NR/L2/TRK/5100 (Issue 2). Management of Fencing and Other Boundary Measures SUPERSEDED BY NR/L2/OTK/5100 HISTORIC ON 1 APRIL 2019	1	31/10/2009
NR/BS/LI/419	Standard affected: NR/ELP/3091 (Issue E2) - DC Electrified Lines Working Instructions SUPERSEDED BY NR/L3/ELP/3091 ISSUE 4 HISTORIC ON 1 DECEMBER 2018	4	12/12/2008
NR/BS/LI/418	DC Electrified Line Working Instruction – standard affected NR/ELP/3091 SUPERSEDED BY NR/L3/ELP/3091 ISSUE 4 HISTORIC ON 1 DECEMBER 2018	3	21/04/2011
NR/BS/LI/106	Electric Points Heating - standard affected NR/L2/ELP/40045	2	01/09/2011
NR/BS/LI/101	Standard affected: RT/CE/S/077 Storage. Installation & Testing of TSR & ESR AWS	1	08/09/2008
NR/BS/LI/097	Standard affected NR/ELP/27052 Work Instructions for DC electrified lines in the Northern city line	1	04/06/2008
NR/BS/LI/095	Standard affected NR/ELP/3091 - DC electrified lines and working instructions SUPERSEDED BY NR/L3/ELP/3091 ISSUE 4 HISTORIC ON 1 DECEMBER 2018	4	04/06/2008
NR/BS/LI/091	Use of CEMBRE Rail Web Connection Systems on DC Conductor Rail - standard affected NR/GN/ELP/27020	1	27/05/2008
NR/BS/LI/090	Standard affected: NR/ELP/3091 - DC electrified lines working instructions. Issue E2 SUPERSEDED BY NR/L3/ELP/3091 ISSUE 4 HISTORIC ON 1 DECEMBER 2018	4	14/02/2014
NR/BS/LI/084	Project D686: Western Territory 650 V Cable Renewals	1	18/04/2008
NR/BS/LI/083	Rail Defect Classification Codes and Summary of Changes to NR/SP/TRK/057 SUPERSEDED BY NR/L2/TRK/001 ISSUE 12 – HISTORIC ON 1 DECEMBER 2018	4	15/05/2008
NR/BS/LI/074	DC Certificates of Isolation associated with circuit breaker – Affected Standard NR/ELP/3091 - SUPERSEDED BY NR/L3/ELP/3091 ISSUE 4 HISTORIC ON 1 DECEMBER 2018	4	25/10/2007
NR/BS/LI/072	STL Auxiliary Transformer Failures at Traction Substations or Switching Stations	4	19/10/2007
NR/BS/LI/061	Dangerous Incident Notification: 11kV indoor switchgear type YSF6 manufactured by Yorkshire Switchgear	1	23/11/2006
NR/BS/LI/060	Traction electrical distribution sites with compromised earthing due to theft of cables - affected standard NR/SP/ELP/21032	1	23/11/2006
NR/BS/LI/056	Permalite Bushings: Access Restrictions	1	11/09/2006
NR/BS/LI/047 - E&P	Bimold Connections on Rectifier Transformers at DC Traction Substations	1	05/05/2006
NR/BS/LI/040	650 V D.C. Traction Power Cables - Support Systems - affected standard NR/SP/ELP/27224	1	20/12/2005
NR/BS/LI/032	Labelling of Track Isolating Switches (T.I.S)	1	17/10/2005
NR/BS/LI/028	Segregation of D.C. Track Feed Cables	1	22/08/2005
NR/BS/LI/025	Paralleling of EDFE Supply Points New Cross - Croydon. Wimbledon. Northfleet: Restrictions	3	07/01/2008

RSSB - Standards and the rail industry

Access all current (and many withdrawn) Railway Group Standards, Rail Industry Approved Codes of Practice (RACOPs), Guidance Notes (GNs) and Rail Industry Standards (RISs).

<http://www.rssb.co.uk/railway-group-standards>

Useful links:

- [Catalogues](#)
- [Document structure and type categories](#)
- [Railway Group Standards Help Manual](#)
- [Rule Book module matrix](#)

Railway Group Standards (RGSs)

Mandatory requirements for the GB mainline railway system are defined in Railway Group Standards (RGSs). They facilitate the management and operation of the mainline railway as a shared system. RGSs set out technical requirements applicable to vehicles or the infrastructure, or processes applicable to transport operators.

<http://www.rssb.co.uk/railway-group-standards>

Rule Book (GE/RT8000)

The Rule Book (GE/RT8000) and other National Operations Publications are documents that contain direct instructions for railway staff.

The Rule Book is held in printed copy by over 100,000 people, and as such is probably the best known and most widely distributed in the entire RSSB catalogue. Even greater numbers of people are known to use it as a reference and information document both from the United Kingdom and abroad using the online version.

You can still order hard copies of individual standards and Rule Book modules or handbooks from Willsons External link (Tel: 01636 702334) or download them from the Railway Group Standards section of this site.

[GERT8000-RBBL Iss 32](#)

Rule Book Briefing Leaflet

GE/RM8000 Master Module Manual

RSSB has produced this manual to provide end-users with access to the content of GE/RT8000 (The Rule Book) that is relevant to all roles as defined in the Rule Book Matrix published by RSSB.

[GERM8000-master-module Iss 6](#) Master Module Manual



Controlled Document List 02 Mar 2019

Ref. / Title	Issue No	Issue Date
RAIL MANAGEMENT SYSTEM		
Rail Management System		

Ref. / Title	Issue No	Issue Date
GROUP STANDARDS		
Modular Rulebook GE/RT8000/ (See separate page for listed modules and issue dates)	-----	-----
GERM8000-master-module Master Module Manual	6	09/2018
GERM8000 Track Workers Manual	5	09/2018
GERM8000 Possession Workers Manual	3	09/2017
GLRT1210 AC Energy Subsystem and Interfaces to Rolling Stock Subsystem	1	12/2014
GLRT1212 DC Conductor Rail Energy Subsystem and Interfaces to Rolling Stock Subsystem	1	09/2015
GOGN3655 Guidance on Medical Fitness for Railway Safety Critical Workers	2	06/2014
PTS Handbook RT 3170	09	06/2013
RIS-1530-PLT Rail Industry Standard for Technical Requirements for On-Track Plant and their Associated Equipment and Trolleys	6	12/2015
RIS-2750-RST Supplier Assurance	1	12/2017
RIS-3118-TOM Incident Response Planning & Management	1	12/2016
RIS-3119-TOM Accident and Incident Investigation	2.1	12/2018
RIS-3119-TOM Accident and Incident Investigation	2.2	03/2019
RIS-3279-TOM High Visibility Clothing	1	12/2016
RIS-3350-TOM Communication of Urgent Operating Advice	1	12/2016
RIS-3701-TOM Rail Industry Standard for a Confidential Reporting System for Rail Staff	1	06/2010
RIS-8046-TOM Spoken Safety Communications	1	12/2016
RIS-8047-TOM Reporting of Safety Related Information	2	03/2018
RIS-8070-TOM Testing Railway Safety Critical Workers for Drugs and Alcohol	1	12/2016

Ref. / Title	Issue No	Issue Date
LONDON UNDERGROUND (LU) STANDARDS		
LUL G1163 Stations DLO - Failure Reporting Analysis & Corrective Action System (FRACAS)	A2	11/2015
LUL G1164 Making a Referral to the Drug and Alcohol Advisory and Treatment Service	A2	04/2014
LUL G1234 Incident recording, investigation and reporting	A4	04/2017
LUL G1241 ALCOHOL AND DRUGS AT WORK GUIDELINES AND INFORMATION FOR MANAGERS	6	07/2009
LUL G1242 Alcohol and Drugs at Work – Managers For Cause and Post Incident Check List	A3	02/2014
LUL G1249 Environmental Incident Categories	A5	07/2018
LUL G557 Electronic Incident Reporting Form (eIRF)	A5	03/2014
LUL LF29 Incident investigation & reporting or recording What you need to remember	01	n/a
LUL R0350 Guidance and advice for the use of personal protective equipment	A1	01/2014
LUL R0403 Personal Protective Equipment (PPE) catalogue	1.1	01/2014
LUL S1251 Alcohol and Work; includes Written Notice 12/24/2014, 6/16/2015	A2	11/2011
LUL S1257 Drugs and Work; Includes Written Notice 01317: 12/24/2014	A2	11/2011
LUL S1552 Contract QUENSH Conditions	A18	11/2016



Ref. / Title	Issue No	Issue Date
LONDON UNDERGROUND (LU) STANDARDS		
LUL S1601 Management Arrangements to Assure Medical Fitness	A5	01/2012
LUL TE-HBS-0017 Managing competence and training	A1 Cat 3	02/1995

Ref. / Title	Issue No	Issue Date
NETWORK RAIL STANDARDS		
NR/CAT/STP/001 CATALOGUE OF NETWORK RAIL STANDARDS	110	12/2018
NR/L2/AMG/1030 Working Safely in the Vicinity of Buried Services	1	12/2008
NR/GN/CIV/208 Ground Investigation	1	12/2018
NR/L2/CIV/003 Engineering and Architectural Assurance of Building and Civil Engineering Works	5	12/2018
NR/L2/CIV/035 Structural Assessments replaces RT/CE/S/035 Issue 2 (NR/SP/CIV/035)	1	12/2017
NR/L2/CIV/086 Management of Earthworks	9	03/2019
NR/L2/CIV/086 Management of Earthworks	8	09/2018
NR/L2/CIV/295 Scour Assessment of Bridges, Culverts and Retaining Walls	2	09/2018
NR/L3/CIV/006 Handbook for the Examination of Structures	8	06/2017
NR/L3/CIV/170 Assessment of Tunnels	1	03/2019
NR/L3/CIV/185 Management of Reports of Safety Related Geotechnical Incidents	1	09/2017
NR/L3/CIV/190 Developing Extreme Weather Plans	1	12/2017
NR/GN/CPR/401 Guidance on Contractual Health and Safety Requirements	1	12/2008
NR/L2/CPR/201 Supplier Qualification	2	12/2011
NR/L2/CPR/302 Supplier Qualification - Core Requirements (For PCL / POL Holders)	2	09/2011
NR/L2/CSG/STP001 Standards and Controls Management Manual	7	03/2018
NR/CS/CTM/001 Competence Management	1	12/2006
NR/GN/CTM/401 Mentoring & Learning Support	1	03/2010
NR/L2/CTM/017 Competence and Training in Civil Engineering	1	06/2006
NR/L2/CTM/021 Competence & Training in Track Safety	4	12/2010
NR/L2/CTM/201 Competence Management	2	03/2012
NR/L2/CTM/202 Quality Assurance in Training & Assessment	2	12/2011
NR/L2/CTM/207 Competence & Training in Planning	2	06/2012
NR/L2/CTM/209 Competence & Training in Safe System of Work Planner	1	12/2010
NR/L2/CTM/220 Competence & Training in Portable, Transportable & Mobile Plant Operation	1	06/2012
NR/L2/CTM/223 Competence & Training in Managing Site Safety	1	06/2011
NR/L2/ELP/21087 Risk Based Maintenance for Overhead Line Assets	8	09/2018
NR/L2/ELP/21088 General maintenance parameters for 25 kV overhead line electrification equipment	3	12/2015
NR/L2/ELP/27009 Overhead Line Equipment Campaign Changes	3	03/2017
NR/L2/ELP/27307 Management of M&EE Safety Related Event Reports	4	12/2017
NR/L2/ELP/27402 Specification for protection and control devices for electrical systems	1	12/2009
NR/L2/ELP/27715 Overhead Contact System Design Specification	3	09/2018

Controlled Documents



Ref. / Title	Issue No	Issue Date
NETWORK RAIL STANDARDS		
NR/L3/ELP/27051 Working Instructions for d.c. Electrified Lines in the Liverpool Area	5	12/2017
NR/L3/ELP/27115 Arrangements for Isolation of the Conductor Rail for Pre-Planned Possessions of the Line	4	09/2018
NR/L3/ELP/27140 Application of Short Circuits for Conductor Rail Isolations	3	09/2018
NR/L3/ELP/27140 Application of Short Circuits for Conductor Rail Isolations	4	03/2019
NR/L3/ELP/27237 Overhead Line Work Instructions	16	09/2018
NR/L3/ELP/3091 DC Electrified Lines Working Instructions	4	09/2018
NR/SP/ELP/29987 Working on or About 25 KV AC Electrified Lines	5	12/2018
NR/L2/ENV/015 Environment and Social Minimum Requirements for Projects – Design and Construction <i>* Issue 7 was published June 2018, then withdrawn and Issue 6 reinstated.</i>	8	03/2019
NR/L2/ENV/115 Environment and Social Management System Requirements	1	03/2018
NR/L2/INF/02203 Controlled Publications - Issue & Receipt	2	12/2011
NR/L3/INF/02204 Controlled Publications - Process & Accountabilities	3	12/2011
NR/L3/INF/02226 Corporate Records Retention Schedule	3	12/2017
NR/GN/INI/001 Guidance on the Management of Door to Door Work & Travel Time	1	12/2008
NR/L2/INI/CP0070 Principal Contractor Licensing Scheme	5	06/2017
NR/L2/INI/P3M/101 Business Process - Governance of Railway Investment Projects (GRIP) - for Projects	5	09/2017
NR/L2/INI/P3M/104 Network Rail Requirements (formerly NR/L1/INI/CP0095)	2	09/2017
NR/L3/INI/CP0028 Contract Requirements - Quality	3	06/2012
NR/L3/INI/CP0036 Provision of Welfare Facilities	4	08/2008
NR/L3/INI/CP0064 Delivering Work Within Possessions	5	06/2017
NR/L2/INV/002 Accident and Incident Reporting and Investigation	13	12/2011
NR/L3/INV/3001 Reporting and Investigation Manual	5	06/2016
NR/L2/MTC/089 Arrangements for the Exchange of Asset Data and the Continuing Maintenance of Assets Undergoing Change	2	12/2018
NR/L3/MTC/EN0100 Waste Management	3	06/2012
NR/L3/MTC/EN0101 Management of Discharges to Sewers & Controlled Waters	3	06/2012
NR/L3/MTC/EN0225 Environ Management System for Infrastructure Maintenance	1	06/2012
NR/L3/MTC/EP0152 Working on or Adjacent to Conductor Rail	5	12/2011
NR/L3/MTC/RCS0216 Risk Control Manual	13	09/2018
NR/L3/MTC/RCS0216/OLE02 Risk Control Manual: Working on Red Bonds/Impedance Bonds	2	03/2012
NR/L3/MTC/SE0115 Confined Spaces Working & Entry Procedure	2	06/2008
NR/L3/MTC/SE0117 Planned Assurance Inspections and Site Surveillance	4	09/2018
NR/CS/OHS/002 Policy on Working Safely	1	02/2007
NR/L1/OHS/051 Drugs and Alcohol	6	12/2015
NR/L1/OHS/052 Traumatic Incident Management	1	06/2016
NR/L1/OHS/053 Assessing Risk of Stress in the Workplace	1	06/2016
NR/L2/OHS/00110 First Aid at Work	6	09/2017
NR/L2/OHS/00112 Worksafe Procedure	2	12/2009

Controlled Documents



Ref. / Title	Issue No	Issue Date
NETWORK RAIL STANDARDS		
NR/L2/OHS/00120 Testing for Drugs and Alcohol	5	12/2015
NR/L2/OHS/00124 Competence Specific Medical Fitness Requirements and Occupational Health Provider Requirements for Medical Assessments	3	12/2016
NR/L2/OHS/003 Fatigue Risk Management Compliance Date: 29 October 2022 – Formerly NR/L2/ERG/003	6	06/2018
NR/L2/OHS/003 Fatigue Risk	7	03/2019
NR/L2/OHS/0044 Planning and Managing Construction Work replaces NR/L3/INI/CP0044 Work Package Planning	5	12/2016
NR/L2/OHS/0047 Application of the construction (Design and Management) Regulations to Network Rail Construction Projects	6	06/2015
NR/L2/OHS/005 High Street Environment & Conditions for Work outside Network Rail Managed Infrastructure	7	09/2010
NR/L2/OHS/019 Safety of People working on or near the Line	9	03/2017
NR/L2/OHS/020 Track Visitor Permits	5	08/2008
NR/L2/OHS/021 Personal Protective Equipment and Work Wear	3	06/2009
NR/L2/OHS/022 Working Safely at Height	1	09/2010
NR/L2/OHS/050 Sentinel Scheme Rules	4	03/2011
NR/L2/OHS/157 Health surveillance for silica and asbestos and the management of diagnosed occupational respiratory conditions	1	03/2017
NR/L3/OHS/0046 The Reporting, Investigation and Recording of Safety and Sustainable Development Events and Close Calls within Infrastructure Projects	3	06/2018
NR/L3/OHS/019-IP Planning and Delivering Safe Work – Implementation Principles for Infrastructure Projects	1	06/2018
NR/L3/OHS/133 Planning and Delivering Safe Work Using Proscient in the East Midlands	1	06/2017
NR/L3/OPS/251 Unmanned Aircraft System (Drone/UAS) Operations	2	03/2019
NR/L3/OPS/084 Line Clear Arrangements Following Engineering Works in Axle Counter Areas – Line Clear Verification Process (formerly NR/L3/OCS/084)	4	09/2018
NR/L2/OTK/5201 Lineside Vegetation Management Manual replaces NR/L2/TRK/5201 Management of Lineside Vegetation	1	03/2018
NR/L2/OTK/5201 Lineside Vegetation Management Manual	2	03/2019
NR/GN/RMVP/0200 Infrastructure Plant Manual Guidance	1	12/2018
NR/L2/RMVP/0200 Infrastructure Plant Manual	10	12/2018
NR/L3/RMVP/0201 Calibration Work Instruction Manual Replaces NR/L3/MTC/ME0201 This standard provides the index and version control of Calibration Work Instructions for the internal calibration and comparison checking of Inspection, Measuring and Test Equipment (IMTE).	2	09/2011
NR/L2/RSE/070 Engineering Verification	2	12/2011
NR/L2/RSE/100 Network Rail Acceptance Panel processes	4	12/2017
NR/L1/RSK/001 Network Rail Risk Policy	2	03/2018
NR/L3/SCO/313 On-Track Machines (OTMs) Driver and Operations Standards Manual	4	12/2018
NR/L3/SCO/313 On-Track Machines (OTMs) Driver and Operations Standards Manual	5	03/2019
NR/L3/SCO/314 Engineering Assurance for T&RS, OTM and OTP Projects	1	12/2018
NR/SIN/113 Special Inspection of Bonding at Bridges, Tunnels & other Overline Structures	2	11/2017

Controlled Documents



Ref. / Title	Issue No	Issue Date
NETWORK RAIL STANDARDS		
NR/L2/SIG/11201 Signalling Design Handbook	11	06/2018
NR/L2/SIG/14201 Signalling Risk Assessment Handbook	3	09/2018
NR/L2/SIG/14201 Signalling Risk Assessment Handbook	4	03/2019
NR/L2/SIG/30009 Signalling Principles Handbook	15	09/2018
NR/L2/SIG/30009 Signalling Principles Handbook	16	03/2019
NR/L3/SIG/10064 General Instructions to Staff Working on S&T Equipment	7	09/2018
NR/L3/SIG/11231 Signal Maintenance Testing Handbook	12	09/2018
NR/L3/SIG/MG0110 Imposition & Removal of Temporary Speed Restrictions	3	06/2012
NR/L2/SIGELP/50000 Safe working and maintenance on or near Signalling Power Distribution Equipment above 175 volts	3	03/2017
NR/L3/SIGELP/50001 Signalling Power Distribution Equipment above 175 Volts	3	03/2017
NR/L3/SIGELP/50002 Safe Working Practices When Working on or Near Signalling Power Distribution Equipment Above 175 Volts	1	12/2016
NR/L3/SIGELP/50003 Safe Working Practices When Working on or Near Signalling Equipment	1	03/2018
NR/L2/TEL/30067 The Transmission of Safety Related Information	2	12/2011
NR/L2/TEL/30156 Functional Requirements for Safety Related Communications Equipment for On Track Plant Working	1	12/2011
NR/GN/TRK/7001 Index of Track Work Information Sheets (TWI)	15	09/2018
NR/L2/TRK/001 Inspection and Maintenance of Permanent Way	12	09/2018
NR/L3/TRK/003 Index of Track Engineering Forms	28	12/2018
NR/L3/TRK/003 Index of Track Engineering Forms	29	03/2019
NR/L3/TRK/3530 Track Lubricants	1	06/2012
NR/L3/TRK/7006 Creation and Application of Initial ESR Design	1	03/2019



Ref. / Title	Reference
OTHER STANDARDS & GUIDANCE	
BS EN ISO 14001:2015	2015
BS EN ISO 9001:2015	2015
BS EN ISO 45001:2018	2018
BS OHSAS 18001:2007	2007
Investigating Accidents and Incidents – HS(G)245	ISBN 9780717628278
Management of Health and Safety at Work Regulations 1999 Approved Code of Practice and guidance	ISBN 9780717624881
Managing health and safety in construction Construction (Design and Management) Regulations 2015. Guidance on Regulations	ISBN 9780717666263
Successful Health and Safety Management – HS(G)65	ISBN 9780717612765

Ref. / Title	Reference
LEGISLATION	
Bribery Act 2010	2010 c. 23
Control of Asbestos at Work Regulations 2002	2002 No. 2675
Control of Pollution (Amendment) Act 1989	1989 c. 14
Control of Pollution Act 1974	1974 c. 40
Corporate Manslaughter and Corporate Homicide Act 2007	2007 c. 19
Data Protection Act 2018	2018 c. 12
Environmental Protection Act 1990	1990 c. 43
Health & Safety at Work etc. Act 1974	1974 c. 37
Modern Slavery Act 2015	2015 c. 30
Pollution Prevention and Control Act 1999	1999 c. 24
The Confined Spaces Regulations 1997	1997 No. 1713
The Construction (Design and Management) Regulations 2015	2015 No. 51
The Control of Asbestos at Work (Amendment) Regulations 1992	1992 No. 3068
The Control of Asbestos at Work (Amendment) Regulations 1998	1998 No. 3235
The Control of Asbestos at Work Regulations 1987	1987 No. 2115
The Control of Asbestos in the Air Regulations 1990	1990 No. 556
The Control of Asbestos Regulations 2006	2006 No. 2739
The Control of Asbestos Regulations 2012	2012 No. 632
The Control of Lead at Work Regulations 1980	1980 No. 1248
The Control of Lead at Work Regulations 1998	1998 No. 543
The Control of Lead at Work Regulations 2002	2002 No. 2676
The Control of Noise at Work Regulations 2005	2005 No. 1643
The Control of Substances Hazardous to Health (Amendment) Regulations 2004	2004 No. 3386
The Control of Substances Hazardous to Health Regulations 2002	2002 No. 2677
The Environmental Noise, Site Waste Management Plans and Spreadable Fats etc. (Revocations and Amendments) Regulations 2013	2013 No. 2854
The Fire Precautions (Workplace) Regulations 1997	1997 No. 1840
The Hazardous Waste (England and Wales) (Amendment) Regulations 2009	2009 No. 507



Ref. / Title	Reference
LEGISLATION	
The Hazardous Waste (England and Wales) Regulations 2005	2005 No. 894
The Health and Safety (Consultation with Employees) Regulations 1996	1996 No. 1513
The Health and Safety (Display Screen Equipment) Regulations 1992	1992 No. 2792
The Health and Safety (First-Aid) Regulations 1981	1981 No. 917
The Lifting Operations and Lifting Equipment Regulations 1998	1998 No. 2307
The Manual Handling Operations Regulations 1992	1992 No. 2793
The Personal Protective Equipment (EC Directive) Regulations 1992	1992 No. 3139
The Personal Protective Equipment at Work Regulations 1992	1992 No. 2966
The Personal Protective Equipment Regulations 2002	2002 No. 1144
The Provision and Use of Work Equipment Regulations 1992	1992 No. 2932
The Provision and Use of Work Equipment Regulations 1998	1998 No. 2306
The Railways and Other Guided Transport Systems (Safety) Regulations 2006	2006 No. 599
The Regulatory Reform (Fire Safety) Order 2005	2005 No. 1541
The Reporting of Injuries, Diseases and Dangerous Occurrences Regulations 2013	2013 No. 1471
The Safety Representatives and Safety Committees Regulations 1977	1977 No. 500
The Site Waste Management Plans Regulations 2008	2008 No. 314
The Waste Management (England and Wales) Regulations 2006	2006 No. 937
The Workplace (Health, Safety and Welfare) Regulations 1992	1992 No. 3004
Transport and Works Act 1992	1992 c. 42
Water Resources Act 1991	1991 c. 57
Wildlife and Countryside (Amendment) Act 1991	1991 c. 39
Wildlife and Countryside Act 1981	1981 c. 69

Modular Rulebook GE/RT8000

PTS Only

In most cases only PTS handbook is required, unless one of the following applies:

1. Index, amendment module and Module *G1* to be issued to the following;

Supervisors and managers who issue publications
Staff who operate signal post replacement switches
Staff who place protection for Line Blockage or T3
Staff who secure points
Those who use tents on or near the line

2. Index and amendment module to be issued to the following;

Lookouts
People who take charge of cranes and equipment which could foul an open line
People who take charge of work on or near points
People who carry out patrolling/inspecting duties

Other competencies (IWA, COSS, PC, ES, MC, CC)

Name & Issue	Issue Date	Title	Synopsis
GERT8000-RBBL Iss 32	Sep 2018	Rule Book Briefing Leaflet	This Leaflet contains details of changes being introduced in December 2018.
GERT8000-Gloss Iss 4	Sep 2017	Glossary of Railway Terminology	You will need this glossary if you are issued with GERT8000. Information on changes to this issue can be found in the Rule Book Briefing Leaflet (GERT8000-RBBL Iss 29)
GERT8000-Gloss Iss 5	Sep 2018	Glossary of Railway Terminology	The Glossary has been updated to reflect changes in terminology within TW5 which removes 'entering service' and replaces it with 'starting a journey'.
GERT8000-AC Iss 5	Sep 2018	AC electrified lines	You will need this module if you carry out the duties of a train driver, guard, shunter, designated person (DP), signaller, crossing keeper or person in charge of sidings in AC electrified areas.
GERT8000-DC Iss 4	Sep 2015	DC electrified lines	You will need this module if you carry out the duties of a train driver, guard, shunter, designated person (DP), signaller, crossing keeper and person in charge of sidings in DC electrified areas. This document has been updated as part of the December 2015 Rule Book Programme.
GERT8000-G1 Iss 6	Sep 2015	General safety responsibilities and personal track safety for non-track workers	You will need this module if you carry out the duties of a train driver, guard, shunter, designated person (DP) and a signaller or crossing keeper in General safety responsibilities and personal track safety for non-track workers. This document has been updated as part of the December 2015 Rule Book Programme.
GERT8000-HB1 Iss 4	Sep 2015	General duties and track safety for track workers	This handbook is for those personnel who need to go on the operational railway to carry out their duties, with the exception of a train driver, guard, shunter, signaller, crossing keeper or designated person (DP). This handbook has been updated as part of the December 2015 Rule Book Programme.
GERT8000-HB10 Iss 4	Sep 2015	Duties of the COSS or SWL and person in charge when using a hand trolley	You will need this handbook if you are the COSS or SWL and person in charge when using a hand trolley. This document has been updated as part of the December 2015 Rule Book Programme.
GERT8000-HB11 Iss 6	Sep 2017	Duties of the person in charge of a possession (PICOP)	You will need this handbook if you carry out the duties of the PICOP. This document has been updated as part of the December 2015 Rule Book Programme.
GERT8000-HB12 Iss 6	Sep 2017	Duties of the engineering supervisor (ES) or safe work leader (SWL) in a possession	You will need this handbook if you carry out the duties of the ES or SWL in a possession. This document has been updated as part of the December 2015 Rule Book Programme.

Controlled Documents



Name & Issue	Issue Date	Title	Synopsis
GERT8000-HB13 Iss 2	Sep 2014	Duties of the person in charge of the siding possession (PICOS)	You will need this handbook if you carry out the duties of a PICOS. Information on changes to this issue can be found in the Rule Book Briefing Leaflet (GERT8000-RBBL Iss 27)
GERT8000-HB14 Iss 2	Mar 2014	Duties of the person in charge of loading and unloading rail vehicles during engineering work	You will need this handbook if you carry out the duties of the person in charge of loading and unloading rail vehicles during engineering work.
GERT8000-HB15 Iss 5	Sep 2017	Duties of the machine controller (MC) and on-track plant operator	You will need this handbook if you carry out the duties of the machine controller (MC) and on-track plant operator. This document has been updated as part of the December 2015 Rule Book Programme.
GERT8000-HB16 Iss 4	Sep 2018	AC electrified lines	This handbook is for those personnel who need to go on the operational railway in an AC electrified area to carry out their duties.
GERT8000-HB17 Iss 3	Sep 2015	DC electrified lines	This handbook is for those personnel who need to go on the operational railway in a DC electrified area to carry out their duties. This document has been updated as part of the December 2015 Rule Book Programme.
GERT8000-HB18 Iss 4	Sep 2015	Duties of a Level Crossing Attendant	You will need this handbook if you carry out the duties of a level crossing attendant. This document has been updated as part of the December 2015 Rule Book Programme.
GERT8000-HB19 Iss 3	Sep 2015	Work on signalling equipment - duties of the signalling technician	You will need this handbook if you carry out the duties of a signalling technician. This document has been updated as part of the December 2015 Rule Book Programme
GERT8000-HB2 Iss 2	Sep 2015	Instructions for track workers who use emergency protection equipment	This handbook is for those personnel who need to go on the operational railway to carry out their duties and have been trained to carry out emergency protection. It does not apply to: train drivers, guards, shunters, signallers, crossing keepers and those who act as a designated person (DP). This document has been updated as part of the December 2015 Rule Book Programme.
GERT8000-HB20 Iss 2	Sep 2015	General duties of a safe work leader (SWL) working outside a possession	You will need this handbook if you have the general duties of a safe work leader working outside a possession. This document has been updated as part of the December 2015 Rule Book Programme.
GERT8000-HB21 Iss 4	Sep 2018	Safe work leader (SWL) blocking a line	You will need this handbook if you are a safe work leader (SWL) blocking a line.
GERT8000-HB3 Iss 3	Sep 2014	Duties of the lookout and site warden	This handbook is for those personnel who have duties of the lookout and site warden. Information on changes to this issue can be found in the Rule Book Briefing Leaflet (GERT8000-RBBL Iss 27).
GERT8000-HB4 Iss 2	Sep 2014	Duties of a points operator and route-setting agent - moving and securing points by hand	This handbook is for those personnel who has duties of a points operator and route-setting agent - moving and securing points by hand. Information on changes to this issue can be found in the Rule Book Briefing Leaflet (GERT8000-RBBL Iss 27).
GERT8000-HB5 Iss 2	Sep 2011	Handsignalling duties	This handbook is for those who carry out handsignalling duties.
GERT8000-HB6 Iss 5	Sep 2015	General duties of an individual working alone	This handbook is for those personnel with general duties of an individual working alone (IWA). This handbook has been updated as part of the December 2015 Rule Book Programme.
GERT8000-HB7 Iss 5	Sep 2015	General duties of a controller of site safety (COSS)	This handbook is for those personnel who have the general duties of a controller of site safety (COSS). This document has been updated as part of the December 2015 Rule Book Programme.
GERT8000-HB8 Iss 7	Sep 2017	IWA, COSS or PC blocking a line	You will need this handbook if you carry out the duties of a IWA, COSS or PC blocking a line.
GERT8000-HB9 Iss 6	Sep 2017	IWA or COSS setting up safe systems of work within possessions	You will need this handbook if you carry out the duties of an IWA or COSS setting up safe systems of work within possessions. This document has been updated as part of the December 2015 Rule Book Programme.
GERT8000-OTM Iss 8	Sep 2017	Working of on-track machines (OTM)	You will need this module if you carry out the duties of a driver of an on-track machine, operator of an on-track machine or signaller. This document has been updated as part of the December 2015 Rule Book Programme.
GERT8000-T10 Iss 4	Sep 2014	Duties of a designated person (DP) and people working on rail vehicles	You will need this module if you carry out the duties of a designated person and people working on a rail vehicle. Information on changes to this issue can be found in the Rule Book Briefing Leaflet (GERT8000-RBBL Iss 27).
GERT8000-T3 Iss 8	Sep 2017	Possession of a running line for engineering work	You will need this module if you carry out the duties of a driver or signaller. Information on changes to the issue can be found in the Rule Book Briefing Leaflet (GERT8000-RBBL Iss 29)



Network Rail Safety Central – Information Section

Code of Conduct

The Code of Conduct establishes some minimum standards that Network Rail expects in their supply chain. It has been developed by Network Rail's National Supply Chain, Industry bodies, and the Unions. It will be reviewed and updated by members of these same groups bi-annually. Please email queries to codeofconduct@networkrail.co.uk

[Code of Business Ethics](#) (web page)

- [Conflicts-of-Interest-and-Outside-Activities-Policy-Refreshed](#) PDF / 1 Jun 2018
- [Speak-Out-Policy-2018](#) PDF / 30 Apr 2018
- [Anti-bribery-Policy-2018-Updated-iEthics-Links](#) PDF / 30 Apr 2018
- [Anti-Slavery and Human Trafficking Policy May 2017](#) PDF / 30 Oct 2017
- [Code of Conduct Oct 2017](#) PDF / 30 Oct 2017
- [Gifts and Hospitality Policy](#) PDF / 23 Mar 2017
- [Code of Business Ethics](#) PDF / 17 Feb 2017
- [Operational Briefing Video](#) ZIP / 15 Jul 2016

[Modern Slavery](#) (web page)

- [Modern-Slavery-On-Site case study](#) PDF / 28 Nov 2018
- [Speak-Out-Policy-2018](#) PDF / 30 Apr 2018
- [Stronger-Together-Poster](#) PDF / 6 Apr 2018
- [Stronger-Together-Worker-Induction-Template](#) PPT / 6 Apr 2018
- [Toolbox talk – Modern slavery](#) PDF / 3 Apr 2018
- [Discussion Pack – Modern Slavery](#) PDF / 3 Apr 2018
- [Anti-Slavery and Human Trafficking Policy May 2017](#) PDF / 30 Oct 2017

Safety Bulletins as of 4th March 2019

In this section you'll find copies of the Network Rail safety bulletins regularly sent out to staff working on the Network Rail infrastructure. These cover a range of different safety issues and are often issued in response to a specific incident.

<https://safety.networkrail.co.uk/tools-resources/safety-bulletins/>

You can refine your search by:

Bulletin type

- Archive - Lessons Learnt
- Archive - Safety Bulletins
- Safety Advice
- Safety Alert
- Safety Bulletin
- Shared Learning

There will also be an archive of past bulletins, so you can download any that you missed, or want to read again. **Please download them for the FULL TEXT OF THE BULLETINS.**

Safety Bulletins

- [Safety Bulletin NRB19-03 Person struck by falling over head wire](#) February 22, 2019
- [Safety Bulletin NRB19-02 Near miss with Track Workers Croxdale Viaduct](#) February 7, 2019
- [Safety Bulletin NRB 19-01 Godinton Substation Staff Injury](#) January 24, 2019
- [Safety Bulletin NRB 20-21 Godinton Substation Staff Injury](#) December 24, 2018
- [Safety Bulletin NRB 18_20 – Lineside materials – vandalism](#) December 21, 2018
- [Safety Bulletin NRB 18_19 – Wacker Neuson DW60 cabbed dumper collision](#) December 14, 2018
- [Safety Bulletin NRB 18_18 – 11kV Depot Cable Strike](#) December 5, 2018

Safety Advice

- [Safety Advice NRA19-02 – Long Portable Earths](#) February 5, 2019
- [Safety Advice NRA19-01 Mini Diggers](#) February 1, 2019
-

Other documents

- [Safety Alert NRX 19_01 Cable Drum Trailer Failure](#) January 17, 2019

Lessons Learnt / Shared Learning

Network Rail are now producing 'Lessons Learnt' publications following events which have led to Formal investigations or local investigations where significant points of learning have resulted. Network Rail believes that these lessons will be of value for all involved in the industry and not just safety professionals, they are ultimately designed to aid prevention of events of a similar nature happening again elsewhere.

[Shared Learning](#)

Health & Wellbeing

[Health and wellbeing](#) (web page)

Risk Management

[Think RISK](#) (web page)

Think RISK is a campaign to help to stop you and your colleagues getting injured at work. Quite simply, it is a series of prompts for you to think through when you're doing your job and help identify and manage safety risks more effectively.

- [Think RISK Launch Film](#) MP4 / 26 May 2018
- [Think-RISK-safety-hour-discussion-pack](#). PPTX / 25 May 2018
- [Think RISK Safety Hour supporting document](#) PDF / 25 May 2018
- [Think RISK Feedback Form](#) DOCX / 25 May 2018
- [Think RISK- Lisbeth Fromling](#) MP4 / 24 May 2018
- [Think RISK Discussion with Chester DU](#) MP4 / 24 May 2018
- [Think RISK Poster Set 1](#) PDF / 22 May 2018
- [Think RISK Poster Set 2](#) PDF / 22 May 2018

Safety Films

<http://safety.networkrail.co.uk/Alerts-and-Campaign/Safety-Films>

In this section you will find all the safety films which are also listed in the relevant subject areas with supporting materials. Please note some of these films contain strong language and scenes which viewers might find upsetting. As such we recommend that these films are only viewed by people over the age of 16.

Have you got a good idea for a film? If you have, write into safety.central@networkrail.co.uk to let us know.

Resource Library

<https://safety.networkrail.co.uk/tools-resources/resource-library/>

The Resource Library holds a wealth of information.

Network Rail Safety Central



SCO 24:7 (Supply Chain – Operations) Telephone

SCO 24:7 (formally the NSC247 and NDS24:7): call 01908 723500 or 085 65500 (internal)

SCO 24:7 operates 24 hours a day, 365 days of the year from the Quadrant in Milton Keynes. Our remit is to manage the real-time delivery of SCO products & services to our customers. This includes engineering haulage, materials, on track machines, infrastructure monitoring, seasonal treatment, HSEA reporting, site access services and lone worker monitoring.

Emergency

If there's a safety threat to you or to others such as:

- Animals, objects or people on or near the track
- Damage or fault at a level crossing
- A vehicle has hit a bridge
- A broken fence or open gate allowing access to the track

Please call Network Rail Emergency 24-hour helpline immediately: **03457 11 41 41**

To report a crime

Please contact the British Transport Police: **0800 40 50 40**, **999** or **Text 61016**



Useful Links

The following pages contain other useful links and safety information from various sources which may be relevant to you.

Item	Details
<p>Health and Safety Executive http://www.hse.gov.uk – Website</p>	<p>Government agency responsible for regulating risks to health and safety arising from work. HSE publications can be downloaded free in Adobe PDF format.</p>
<p>CIRAS Online http://www.ciras.org.uk – free access</p>	<p>The Confidential Incident Reporting and Analysis System Freephone number 0800 4 101 101.</p>
<p>Network Rail http://www.networkrail.co.uk – Website</p>	<p>Owner and operator of Britain's railway infrastructure.</p>
<p>Network Rail Standards http://www.ihserc.com/ – subscription required</p> <p>Network Rail Standards Subscriptions IHS Global Ltd Phone: 01344 328000</p> <p>Network Rail Standards Management Publications Manager Nicole Lockwood Phone: 01908 782 481</p> <p>Network Rail Standards Hard Copy Document Centre IHS Retail Phone: 01344 328039 Fax: 01344 328005 or email: emeastore@ihs.com</p> <p>Network Rail Technical Drawings National Records Group Email: nrgcivils@networkrail.co.uk</p>	<p>All current Network Rail standards are available via the IHS website.</p> <p>How do I become an annual subscriber to an IHS product? IHS business packages are available to purchase on an Annual Subscription basis by either Core Selection Criteria or individual/additional supplements.</p> <p>Upon receiving the above information, we will be in contact to confirm your exact requirements along with pricing details. Before issuing a Password for Internet Access or forwarding CD ROMs we will require an official Purchase Order No. from your Company.</p>
<p>Network Rail Safety Central http://safety.networkrail.co.uk – free access</p>	<p>The site is your one-stop shop of safety information, advice, resources and useful contacts, designed to promote consistency and best practice across the whole rail industry. The information is divided under the following sections:</p> <ul style="list-style-type: none"> • Alerts & Campaign Material • Communication & Health • Commitment & Rules • Safety Groups • On Site Solutions • Toolbox
<p>RSSB Close Call System www.closecallsystem.co.uk – Register for access</p>	<p>At the request of Network Rail and its contractors, RSSB has developed a new internet-based system that will allow the industry to centrally record and analyse 'Close Call incidents'. This is known as the Close Call System.</p>
<p>Rail Safety and Standards Board http://www.rssb.co.uk – free access</p>	<p>RSSB builds industry-wide consensus and facilitates the resolution of difficult cross-industry issues. They provide knowledge, analysis, a substantial level of technical expertise, powerful information and risk management tools.</p>
<p>RSSB Websites & Online Services http://www.rssb.co.uk/rssb-websites-and-services</p>	<p>RSSB Websites & Online Services</p> <p>This is a very useful page that provides links to various other websites. These websites are fully or partially hosted by RSSB and other external organisations within the rail industry to you with useful resources and tools.</p>



Item	Details
<p>Railway Group Standards http://www.rssb.co.uk/rgs – free access</p> <p>Rail Safety & Standards Board Enquiry Desk Phone: 020 3142 5400 Website www.rssb.co.uk</p>	<p>Purchasing Railway Group Standards A copy of the order form can be found in the forms section of the RGS Catalogue or from the RGSONLINE website stated above. You will need the following details in order to complete the form:</p> <ul style="list-style-type: none"> • Railway Group Standards code and title • Quantity • Price • Purchaser's full name, business, address and telephone number • Credit card details, cheque or purchase order number <p>Then fax or post it to Willsons Printers Limited at the address below.</p> <p>Please ensure that you include your credit card details, purchase order or a cheque made payable to Willsons Printers. Payments can also be made by BACS - please contact Willsons for company bank details. Orders received will be dispatched within five working days.</p> <p>Purchasing National Operations Publications National Operations Publications are Railway Group Standards which set out mandatory requirements for direct application in the workplace. These include:</p> <ul style="list-style-type: none"> • Modular Rule Book (GERT8000) • Working Manual for Rail Staff: Handling and Carriage of Dangerous Goods (GORM3053) • Working Manual for Rail Staff: Freight Train Operators (GORM3056) • Rule Book Forms <p>Details of these documents can be found in the sections 'Document Titles and Descriptions' for Traffic Operation and Management.</p> <p>As these documents are subject to frequent change, amendments which do not justify the reissue of the module or section of the working manual are published in GERT8001, Changes to National Operations Publications.</p> <p>Willsons Printers Limited supplies the modules and handbooks which make up the Modular Rule Book, Working Manual and Rule Book forms.</p> <p>You can order these documents by contacting Denise Atkinson at Willsons Printers Limited at the address below:</p> <p>Willsons Printers Limited Highlander House Cross Street, Newark Nottinghamshire, NG24 1PP Tel: 01636702334 Fax: 01636701396 http://www.willsonshop.com</p>
<p>M&EE Networking Group Codes of Practice http://www.rssb.co.uk/rgs</p> <p>Refine results by selecting Lead Committee</p>	<p>The M&EE Networking Group is a non profit making group dedicated to the sharing of professional engineering and railway operations information and to provide a focus to the rail industry relating to operational and technical safety of plant. The group is a meeting of the professional heads of mechanical and electrical engineering and operations from infrastructure contractors, Network Rail, RSSB, the Rail Plant Association, London Underground and elected representatives from other infrastructure renewal companies, plant owners, and manufacturers/suppliers of plant and technical services.</p> <p>The M&EE Networking Group produces Codes of Practice and other documents as good practice for all members of the industry.</p>
<p>Rail Sentinel https://www.railsentinel.co.uk/ – registered companies only</p>	<p>Sentinel Scheme Rules The latest copy of the scheme rules can be found here: Sentinel Scheme Rules (bottom of website)</p>
<p>Office of Rail and Road http://orr.gov.uk/ – free access</p>	<p>Independent safety and economic regulator for Britain's railways, and monitor of performance and efficiency for England's Strategic Road Network.</p>
<p>Rail Accident Investigation Branch http://www.raib.gov.uk/ – free access</p>	<p>Independent railway accident investigation organisation for the UK. It investigates railway accidents and incidents on the UK's railways to improve safety, not to establish blame.</p>



Other Safety Information

Other Bulletins

Planning and Delivering Safe Work

Standard 019 – Safety of people at work on or near the line is now live.

<https://safety.networkrail.co.uk/safety/planning-and-delivering-safe-work/>

- [SSoWP Guidance](#)
- [PDSW Communications](#)
- [Standard 019 issue 9 Support](#)
- [Standard 019 Briefing Materials](#)
- [Standard 019 Further Guidance](#)
- [019 Infrastructure Projects Guidance](#)

Latest updates:

- [Standard 019 PDSW One year on](#) PPTX / 30 Oct 2018
- [PDSW One Year On Question Set](#) PPTX / 30 Oct 2018
- [Latest 019 FAQs – August 2017](#) PDF / 20 Oct 2017
- [Revised Standard 019 Animation](#) MP4 / 17 Feb 2017

Working at Height

In January 2019 an Emergency Change NR/BS/LI413 was implemented. this affect Standard NR/L2/OHS/022 issue 1 Working Safely at Height.

- [Emergency Change – Working Safely at Heights – January 2019](#) PPTX / 30 Jan 2019
- [Working at height ukxi_20050735_en](#) PDF / 30 Jan 2019
- [Safe use of ladders HSE indg455](#) PDF / 30 Jan 2019
- [Working at Height HSE indg401](#) PDF / 30 Jan 2019

Track Safety Alliance

A few videos of interest at the Track Safety Alliance website:

<http://www.tracksafetyalliance.co.uk/videos/65/>

- [Waste Management](#)
- [Japanese knotweed](#)
- [Near miss one too many](#)
- [Prep4Safety V2](#)
- [Prep4Winter](#)
- [Track Safety Matters - Introduction To TSA](#)
- [Track Safety Matters - The Ballast Dust Story](#)
- [Track Safety Matters - Close Calls](#)
- [Track Safety Matters - Safety And Innovation](#)
- [Fatigue Management](#)
- [TSA - Prep4Safety](#)
- [Working at Height](#)
- [Great Crested Newts](#)

Southern Shield

Everyone Home Safe Every Day

Southern Shield is a collaborative safety forum that consists of Network Rail Infrastructure Projects Southern Region and its principal contractors

Safety Messages <https://www.southernshield.co.uk/safety-messages/4/>

Best Practice <https://www.southernshield.co.uk/best-practice/90/>

There are many more useful links on their website <https://www.southernshield.co.uk/>



Fatigue Improvement Programme

<https://safety.networkrail.co.uk/fatigue-improvement-programme/>

There is no single scientific definition of fatigue, but it is accepted that fatigue is generally a feeling of extreme tiredness and being unable to perform work effectively. It is a state of impairment that can result from prolonged working, heavy workload, insufficient rest and inadequate sleep, and can include mental and /or physical elements.

Managing Fatigue is everyone's responsibility. Our aim is to ensure everyone working for Network Rail and working on Network Rail's infrastructure understands Fatigue and are provided with tools and education to manage their fatigue risk.

The Fatigue Improvement Programme will see the introduction of a revised Fatigue standard which is being released in a modular approach from October 2018 to December 2019, with a compliance date of October 2022. The revised fatigue standard (v6) NR/L2/OHS/003, applies to everyone within Network Rail and those working on Network Rail infrastructure. Previously v5 of the standard only covered safety critical staff.


- [Fatigue Awareness week March 2019](#) ZIP / 20 Feb 2019
- [Fatigue Factsheets](#) ZIP / 13 Feb 2019
- [Fatigue Safety Hour Material](#) ZIP / 13 Feb 2019
- [Fatigue Awareness Information](#) ZIP / 13 Feb 2019
- [Fatigue What can I be doing now](#) ZIP / 13 Feb 2019
- [Fatigue Event Information](#) ZIP / 13 Feb 2019
- [Fatigue Posters](#) ZIP / 13 Feb 2019

You will also find some reference material for Fatigue:

HSE fatigue risk index calculator (FRI) and RR446 – The development of a fatigue / risk index for shiftworkers – <http://www.hse.gov.uk/research/rrhtm/rr446.htm>
ORR Report on Fatigue
RMT Fatigue – long hours limit life



A SAFER, HIGHER PERFORMING WORKFORCE

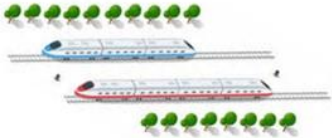



14 12
FIP
40 60

home safe plan **everyone fit for the future**
everyone home safe every day

RIDC Briefing – 28/02/19
Fatigue Improvement Programme

A SAFER RAILWAY FOR OUR PASSENGERS

1

Fatigue Improvement Programme – The Importance

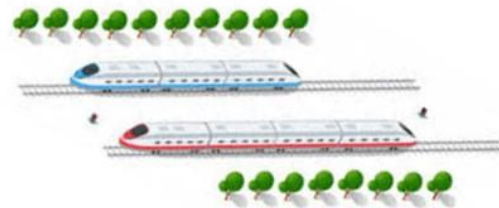


A SAFER WORK FORCE



- Better decision making
- Reduced risk taking
- Increased alertness
- Increased concentration

- Lower risk of RTAs
- Reduced absenteeism
- Higher performance
- Quicker reaction times
- Improved health
- Improved wellbeing



A SAFER RAILWAY FOR OUR PASSENGERS

A better railway for a better Britain

4-Mar-19 / 2



Fatigue Improvement Programme – What Are We Doing?



The previous standard (v5) only covered safety critical workers, the new standard (v6) applies to everyone within Network Rail and those working on Network Rail infrastructure, assets & systems.

The new standard **does not impose limits** on what people can work but instead introduces four 'trigger points' where mitigating actions are required.

Fatigue Improvement Programme – What Are We Introducing?

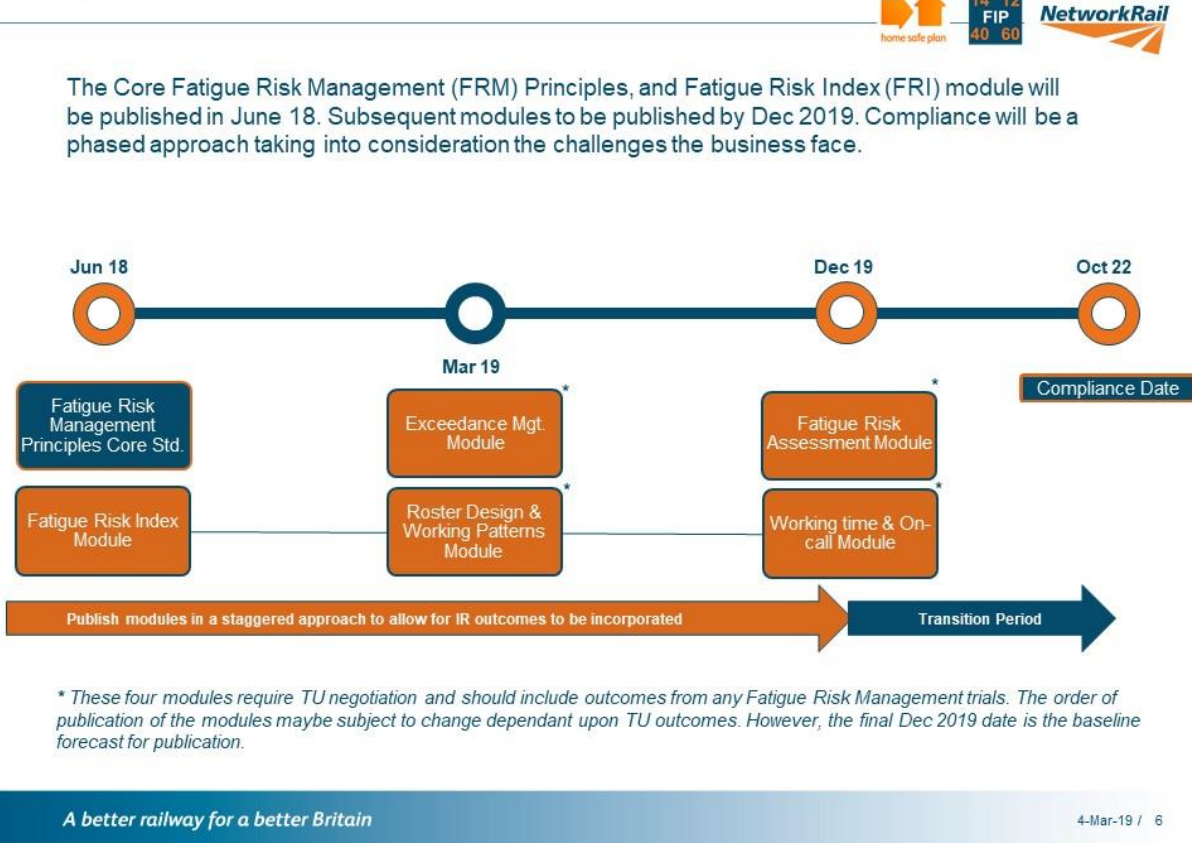




Fatigue Improvement Programme – How Are We Tackling Fatigue?

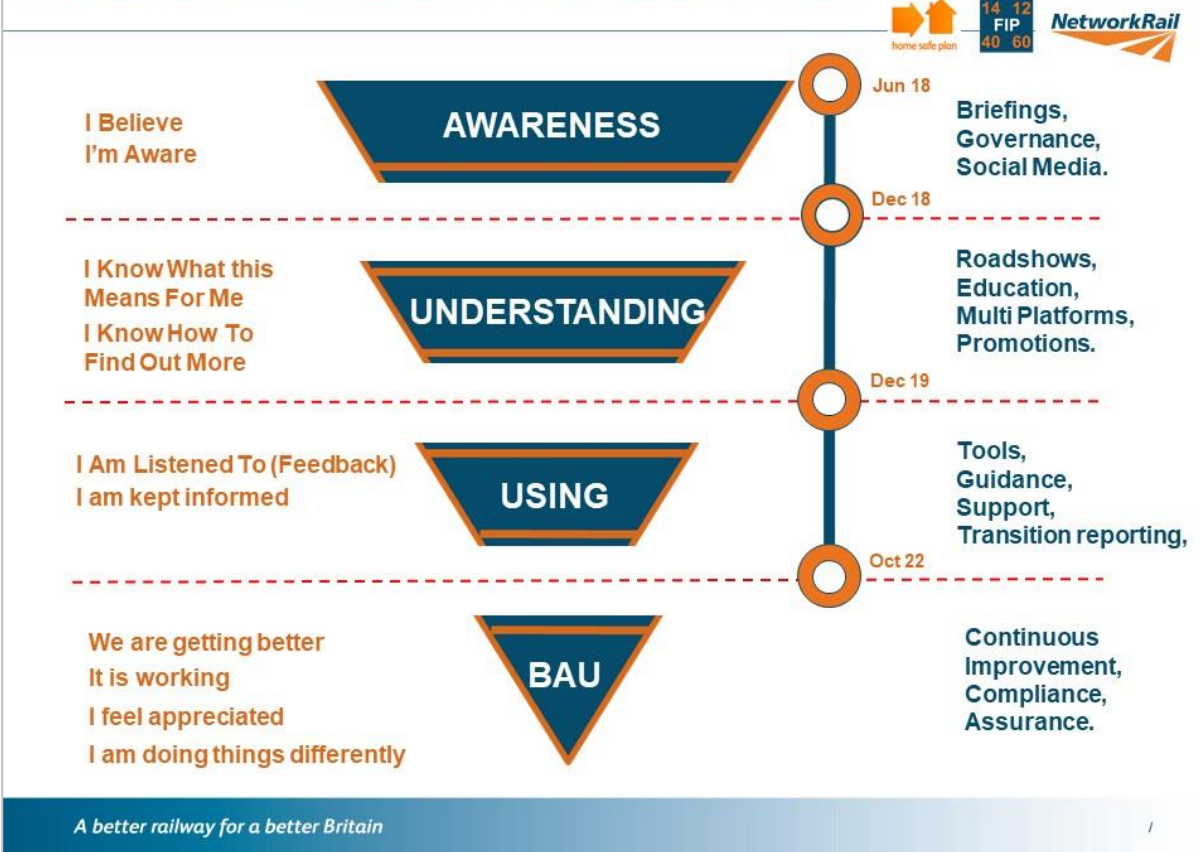


Fatigue Improvement Programme - Standard Approach

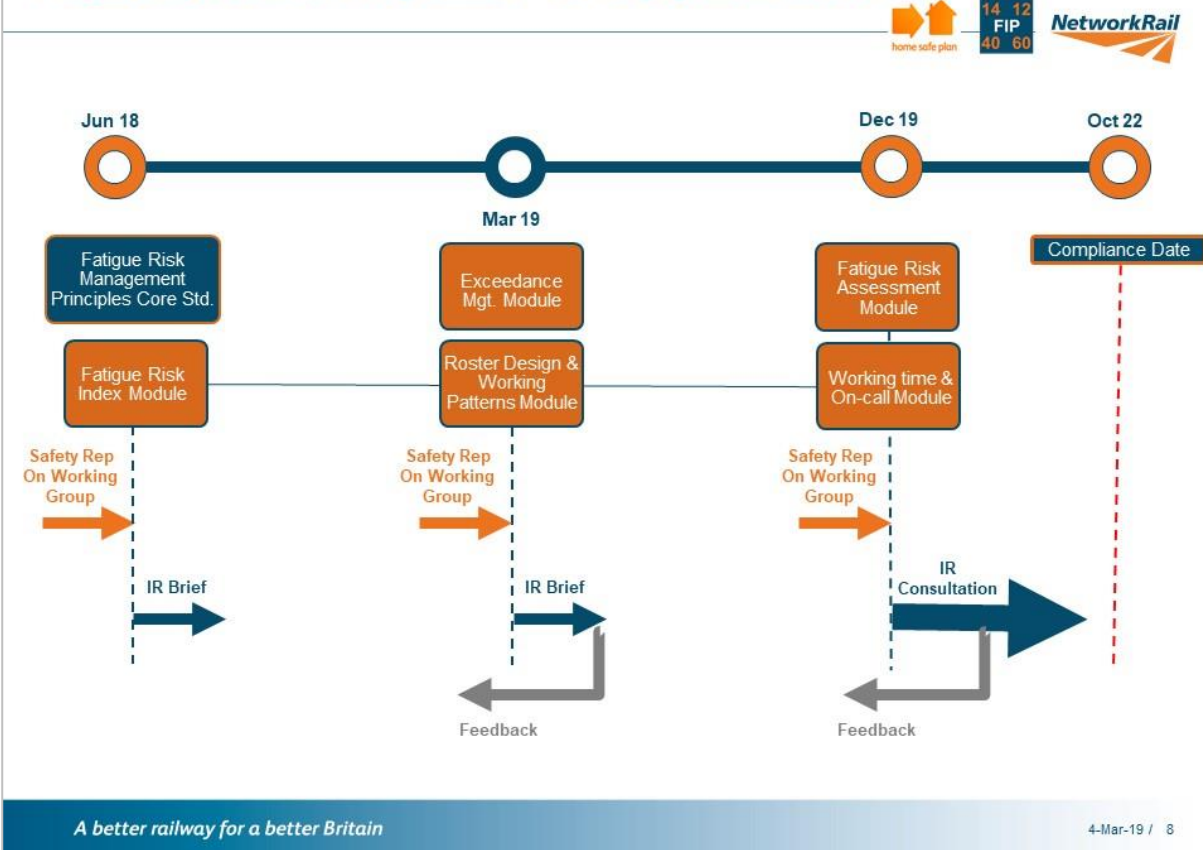




Fatigue Improvement Programme – Engagement Framework

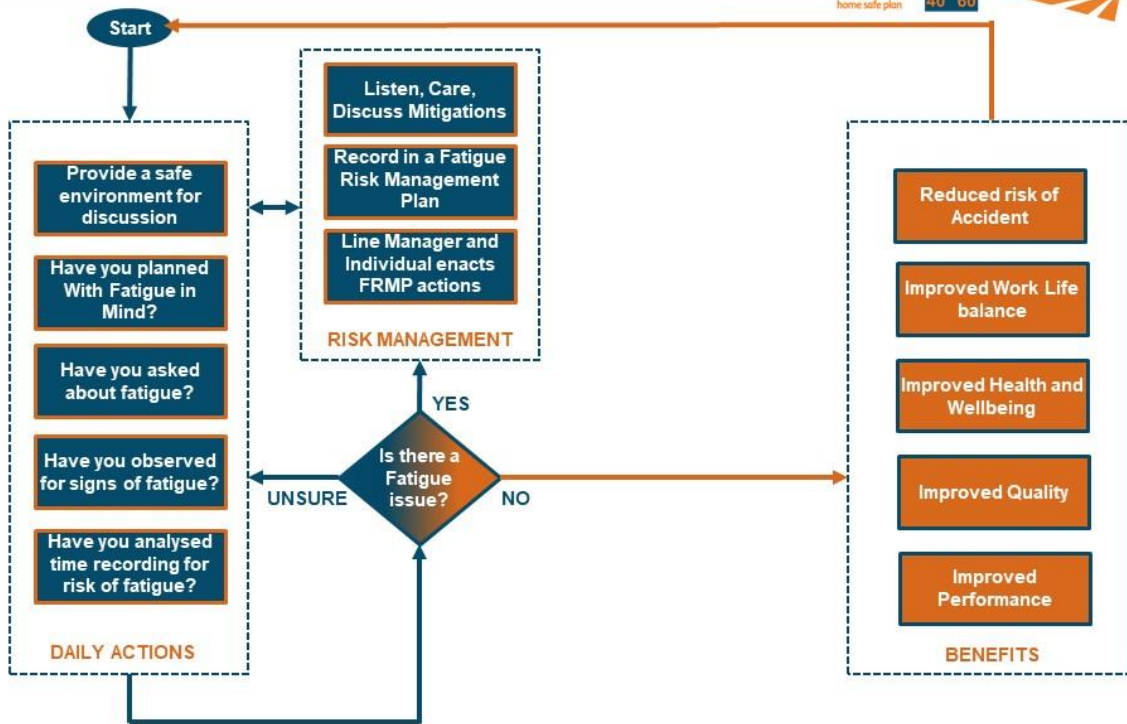


Fatigue Improvement Programme – TU Engagement Model



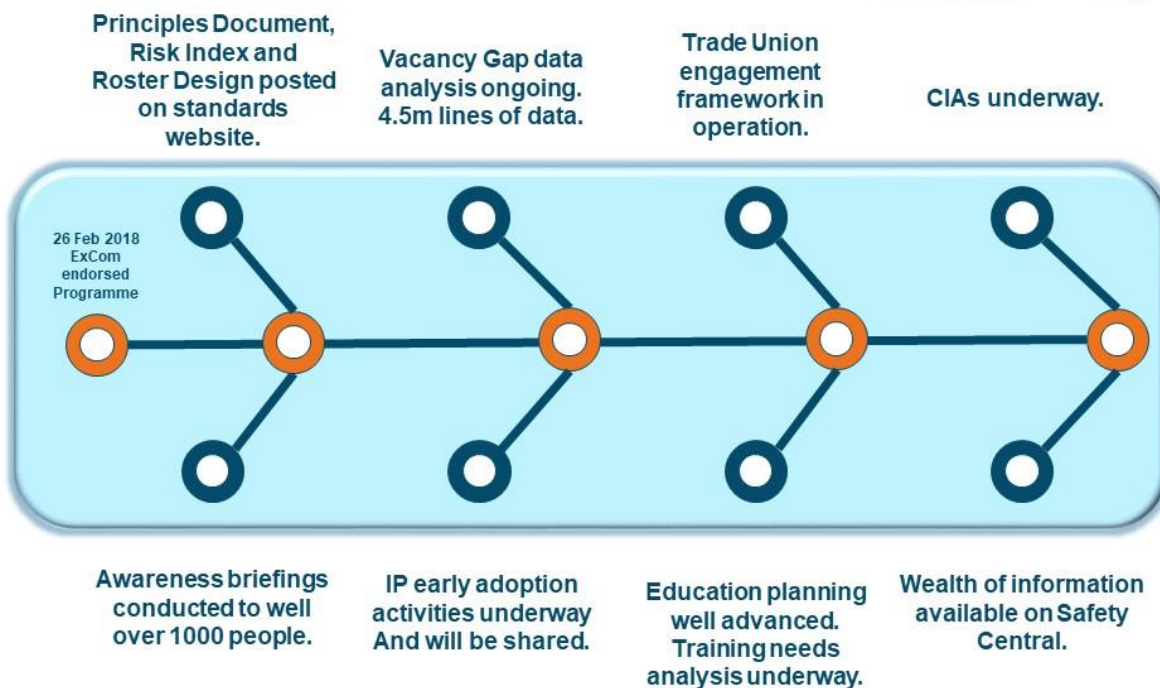


Fatigue Improvement Programme – The End State



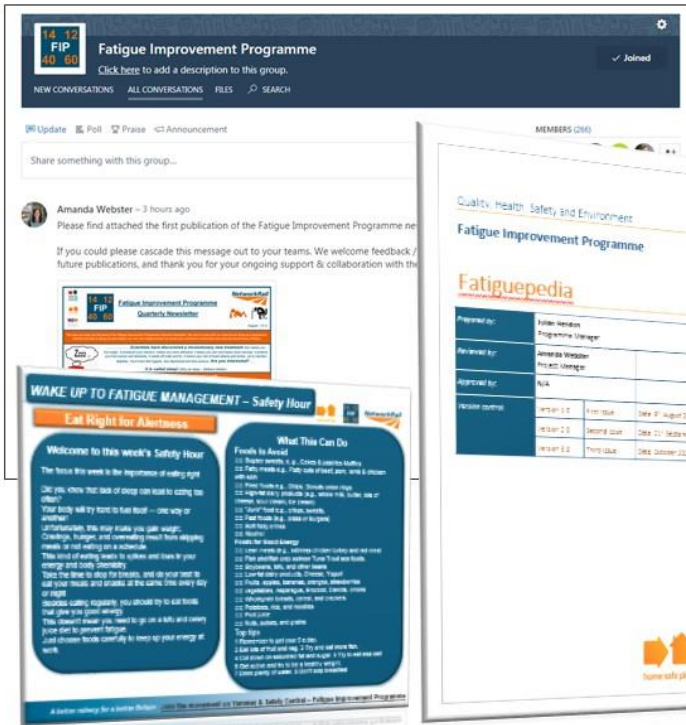
A better railway for a better Britain

Fatigue Improvement Programme – Key Achievements to Date



A better railway for a better Britain

Fatigue Improvement Programme – Educational Platforms



Join the movement – Fatigue Improvement Programme

Yammer

Daily educational posts shared from programme team.

Safety Central

Central repository for all: Programme communications. Fatiguepedia Safety Hours. Videos.

A better railway for a better Britain

4-Mar-19 / 11

Fatigue Improvement Programme – Communications Material



Fatigue Quarterly Newsletter has been published on 1st August 2018.

Available on Safety Central, Yammer, cascaded via email and posted in QMK postal areas. Business Engagement Leads encouraged to share widely.

Frequently asked questions produced for programme, and are reviewed & updated on a quarterly basis.

Fatiguepedia

All of the daily posts from Yammer:

- The science of sleep.
- Sleep Preparation.
- How to Sleep.
- Causes of Fatigue
- Recognising Fatigue.
- Management of Fatigue.
- Fatigue related technology
- Useful tools
- General fatigue factlets.

Fatigue **Safety Hours** produced by Programme Team

Available on Safety Central and Yammer.

A better railway for a better Britain

4-Mar-19 / 12

Fatigue Improvement Programme - Fatigue Awareness Week



Fatigue Awareness Week takes place: 11th to 15th March 2019



World Sleep Day: Friday 15th March 2019

What we are doing: organising a host of workshops, presentations, stalls and programme briefings in The Quadrant:MK. From external companies such as RSSB, to NATS, to 7 Futures and also collaboration with our health and wellbeing team. Also collaborating with Q:MK gym to host lunch walking hours.



Intended Outcomes: a suite of tools that business areas can use in their own areas to promote and educate to engender the business and cultural change.

A better railway for a better Britain

Fatigue Improvement Programme – Determination Tool



- Tool designed to be a “simple” indicator of current or forthcoming fatigue.
- Tool designed for multiple platforms. (Hand, PC, App)
- The five questions have been chosen to cover:
 - Is an individual working with or against their body clock?
 - How long have they been awake?
 - How long since they were able to take 24hrs of quality rest?
 - What is the level of their sleep debt over the last 3 weeks?
 - How physically or mentally demanding the activity they are currently doing is?
- Tool designed to be a snapshot in time and not a “forward forecast” of when fatigue may become a risk.
- Tool is intended to be used by individuals and managers in fatigue related conversations.
- It covers only the “Work” environment and not any other outside influences

A better railway for a better Britain



Fatigue Improvement Programme – Early Adopter Material



• **How to Guide**

- Out for review



- Key Principles
 - 14/12/40/60
 - Observe/Care/Mitigate/Monitor
- Pre-requisites needed
- Individuals role
- Line Manager role
- FAQs

• **FRMP**

- Out for review



- Statement of Intent
- Hazard Identification
- Risk Assessment
- Risk controls
- Good Practice Recommendations
- RACI

• **Fatigue Conversations**

- Being Drafted



- What is a fatigue conversation
- Who holds it
- Who initiates it
- Preparation
- Additional guidance

Fatigue Improvement Programme – To Consider



- Are you “Leading by Example”?
- Do you manage your own fatigue?



- Do individuals feel they can approach you with fatigue concerns?
- Do you have regular fatigue discussions in 1-1s and Team Meetings?
- Do you know the signs of fatigue?
- Do you regularly ask if people have any fatigue issues?

- Do you have a means of capturing hours worked and do you analyse this?
- Do you know your teams forward workload?
- Do you know what mitigations can be put in place to reduce fatigue?
- Do you consider fatigue when allocating work?

- How do/will you react when someone raises a fatigue concern?





17th January 2019

Dear Sir/Madam,

Industry Common Induction (ICI)

From February 2019 the first of the ICI competences that were awarded 5 years ago will begin to expire.

There have been many questions raised on how the competence will be recertified which has led Network Rail to review the impact of the ICI competence on site briefings and how the competence is to be renewed.

As you are aware, Network Rail has worked in partnership with the Infrastructure Safety Leadership Group (ISLG) to develop the ICI competence. The question of recertification has been raised with them and will be discussed at the next ISLG meeting.

In the meantime, while these discussions take place, all ICI competences will be extended by a year. This will be shown on their Sentinel profile and all Training Providers will also be made aware of the extension pending a review.

Yours sincerely,

Bill Cooke
Head of Corporate Workforce Safety



Network Rail
Safety, Technical and Engineering
The Quadrant: MK | Elder Gate
Milton Keynes | MK9 1EN

Re: ORR Action Notification – Engineering Control of Workforce Respiratory Hazards for OTP and OTM.

Dear Stuart

Network Rail has a duty of care to all employees as specified within the Health and Safety at Work Act 1974 and all umbrella regulations. One such applicable regulation is the Control of Substances Hazardous to Health (COSHH) Regulations 2002, which requires the control of hazardous substances used whilst at work to prevent ill health.

The Office of Rail and Road (ORR) Inspection National Report - NRIP INS 323 2013 / 2014, Action 7, identified an area of improvement around safety control mechanisms. This action included this specific requirement “Network Rail should also take measures to move up the control hierarchy by improved design and containment of dust at source on new plant and machinery used for ballast renewals”.

The hierarchy of control requires that we attempt elimination of the risk at source prior to the implementation of an operational control, such as provision of Personal Protective Equipment (PPE). The ORR identified, via site visits, that there was heavy reliance on the use of Respiratory Protective Equipment (RPE) as mitigation against respiratory hazards, without adequate consideration as to how we may impact on elimination via safety by design.

As a result of the above, Network Rail is mandating the control (or elimination) of silica dust (ballast dust) generated by plant via engineering means, when undertaking work within a possession on Network Rail Managed Infrastructure. The changes will take effect as of March 2019 and are applicable to:

- On-Track Machines
- On-Track and Mobile Plant
- Portable, Transportable Plant

NR/L2/RMVP/0200, commonly referred to as the Infrastructure Plant Manual has been amended and published on 01st December 2018 with requirement for compliance by March 2019. The new issue shall mandate installation of engineering control measures for On-Track Plant, Mobile Plant and Portable Transportable Plant designed/capable of being used for working with ballast. The hazard being addressed is that of silica dust (aka ballast dust) a respiratory hazard that causes a number of respirable diseases such as silicosis.

These engineering requirements are not new, and the technology to address health and safety needs is readily available on the market. For example, cab requirements for On Track Plant already exist within the following harmonised standards BS EN 15746-2:2010+A1:2011 for RRVs. RIS-1530-

Network Rail Infrastructure Limited Registered Office: Network Rail, One Eversholt Street, London, NW1 2DN Registered in England and Wales No. 2904587 www.networkrail.co.uk



PLT clause 5.1.3 states 'Machines that are declared compliant with the Machinery Directive shall use the following standards as a basis for the presumption of conformity: (a) BS EN 15746-2:2010+A1:2011 for RRVs'.

Minimum requirements for the protection of staff from dust for New On-Track Machines are managed through the application of BS EN 14033-3:2017. In Control Period 6 Network Rail will be continuing its programme of enhancements to reduce the risk posed from existing On-Track Machine fleets focussing on ballast dust creating activities (e.g. ballast drops and mechanised track maintenance).

Network Rail already assesses via the product acceptance process health and safety control measures for plant designs intended to be used in activities which generates silica dust (ballast dust). With the introduction of NR/L2/RMVP/0200 Issue 10, detailed scrutiny will be undertaken around application of the above listed documents and associated requirements.

The engineering control requirement is applicable to anyone working with plant which has the potential to generate silica dust (ballast dust) on Network Rail Managed Infrastructure. Principally these are:

- Work Delivery Managers;
- Plant Supply/Hire Companies;
- Plant Procurement – Purchase and Hire;
- Plant Asset Management Teams;
- Plant Asset Maintenance Companies;
- Plant Asset Operating Companies.

In order to reduce the risk of dust exposure to our rail staff we will be sharing this information via safety working groups, standards groups and user groups in order to allow our suppliers to identify opportunities to enhance their own fleets.

Yours sincerely,

Malcolm Miles CEng M IMechE

Head of Plant

Safety, Technical and Engineering



NetworkRail



LNE & EM, Safety Bulletin

Very Near Miss at Sundon between Harpenden Junction and Elstow Sidings

Overview

At 2350 on 12th December an Isolation team accessed the Down Fast line at Sundon between Harpenden Junction and Elstow Sidings. The plan was to isolate the Slow lines which were under possession, but they accessed the track on the wrong side onto the fast lines. They drove up and down the lane looking at structure numbers to pin-point their location, and inadvertently parked on the wrong side and accessed from there. They were walking with their back to traffic when a train approached on the Down Fast line, resulting in the two staff having to dive out of the way with the train narrowly missing them.

Discussion Points

While we are investigating this incident please discuss the following with your teams:

- ⇒ Are you always confident that the lines you are working on are safe from the passage of trains?
- ⇒ Do you always receive and understand your relevant paperwork/information and COSS site briefing?
- ⇒ Do you always know where you are when you are on the Railway Infrastructure and what line you're on?
- ⇒ Are you confident your colleagues understand what they are doing and do you feel comfortable challenging them?
- ⇒ What can you do to ensure that you are in the right area?

This is stark reminder of the potential dangers if you are unsure of your working environment can cause. We would like to remind all staff, if you are unsure to speak up and say something.





NetworkRail

Infrastructure Projects

Central Region Shared Learning

People/Plant Interface

Interfacing with Road Rail Vehicles (RRV) is an everyday activity which is underpinned by one of our life saving rules (LSR) e.g.



Never enter the agreed exclusion zone, unless directed to by the person in charge

However, the number of breaches of this LSR are causing concern to such an extent that a recent safety forum the Senior Leadership Team both in Network Rail and our Supply Chain have jointly agreed to act.

Details:

- 15% of all events so far, this year within IP Central have occurred have involved plant/people interface with 75% of these occurring on our major schemes. Subcontractors were involved in 65% of these.
- The largest root cause of the events is due to inappropriate operative actions, which implies that there has been a systemic failure of existing established controls.
- Within the IP Central supply chain, we have had RRVs topple over, collide with each other and strike bridges and other structures. Luckily no-one has been seriously hurt.
- It's worth noting that the individual who was trapped under a telehandler at High

Wycombe in August 2017 is still not back to full health.

Shared Learning:

- If you are a RRV operator it is your responsibility to stop work and make your RRV safe before anyone enters your exclusion zone.
- If you are a Machine Controller it is your responsibility to manage the exclusion zone and the interface between the workforce and the RRV.
- If you are a member of the workforce, it is your responsibility never to enter an exclusion zone unless you have permission from the Machine Controller.
- We would all agree with that our other LSRs e.g. Speeding, being under the influence of drugs and alcohol or not having a Safe System of Work pack etc should never be broken and the LSR on Entering Exclusion Zones should not be treated any differently.

Action

- Brief all your teams on why we have our LSR and how they are designed to get Everyone Home Safe Every day.
- Set out the expectation on each employee with respect to the LSR.
- All breaches of our LSR will need to be investigated including a Fair Culture Assessment of all the individuals involved.



25 kV ac overhead line equipment



Never assume equipment is isolated
– always test before touch.

Brief **This Document comes into force on 30/06/2019**

- ❑ When working on or near 25kV a.c overhead line equipment, the equipment shall be assumed live unless in receipt of a Form C. All Form C holders shall witness a test prior to accepting a Form C and commencing work. The test shall be carried out within the specified isolation limits.
- ❑ For the purposes of this document “touch” is defined as any circumstance which requires a person, or any tools (excluding approved insulated tools), coming within 600mm of 25kV a.c overhead line equipment.
- ❑ When touching the 25kV a.c overhead line equipment, once in receipt of a Form C a further test shall be carried out prior to work commencing for the first time at the site of work. The test shall be performed or witnessed by all members of the working group.
- ❑ For competent overhead line equipment staff touching 25kV a.c. overhead line equipment, once in receipt of a Form C and having carried out an initial test before touch, you shall test the new location if: you have moved beyond discrete features in the Overhead Line Structure (such as Section Insulators, Neutral Sections, Insulated Overlaps), moved onto a different track; or moved on to a different conductor.
If there is any doubt, then the test shall be performed again.
- ❑ Only approved test devices shall be used to perform testing.
- ❑ Testing of the overhead line equipment prior to issuing a Form C shall only be performed by a Nominated Person or an Authorised Person..

This lifesaving rule applies to

- ❑ All components which may be energised at 25 kV a.c. This includes but is not limited to,
 - Catenary system including contact wire
 - Bare feeders
 - Autotransformer Feeder (ATF)
 - Supplementary conductors
 - Exposed cable terminations
 - Booster Transformers
 - Harmonic Dampers
 - H.V distribution cables
- Note, a supporting HV distribution permit to work may be required in addition to a Form C for some of the above.

This lifesaving rule does not apply to

- ❑ OLE under construction (i.e. not capable of being energised)

Learning for the future

- ❑ Every report of persons receiving an electric shock shall be formally investigated and where necessary using the fair culture process in establishing the cause.
- ❑ A Close Call shall be raised, and an EP Safety Related Event report produced (NR/L2/ELP/27307) when a conductor is tested live and it is not expected to be live.



Shared Learning

Key learning following a serious incident



RIDDOR Burn Injury – Use of hedge trimmer

Issued to: **All Network Rail line managers, safety professionals and RISQS registered contractors**

Ref: NRL19-01

Date of issue: 04/02/2019

Location: Glendrissaig, Girvan

Contact: Gillian Murphy, Senior Communications Manager
gillian.murphy@networkrail.co.uk



Overview

On 23 August 2018, a five-person team, including two supervisors, were carrying out vegetation clearance tasks on a steep embankment utilising rope access.

A petrol driven hedge trimmer was being used to cut light brush. After 3-4 minutes the equipment was placed on the embankment where it ignited.

The flames spread to the operative's right leg causing a significant burn.

The investigation revealed that fuel leaked from the hedge trimmer whilst in use. There was no visible damage to the equipment but, the fuel cap was found 2-3 metres away.

All workers and supervisors on site were aware that the operative was not trained to use the equipment.

The injured person required hospital treatment for a duration of 5 days and 23 days recovery time in total.

Underlying causes

- The injured person had not been trained to operate the equipment
- The fuel cap was not attached / correctly attached to the hedge trimmer
- The IP had been permitted to use the hedge trimmer previously at site under supervision
- The lifesaving rule breach went unchallenged by both supervisors and workers on site

Key message

Consider the following on your sites:

How is visibility of workforce competence provided on sites to enable safe and appropriate allocation of resources?

What are the requirements for storage, checks and safe handling of equipment on site?

What are supervisors' safety responsibilities on site? How are these assessed?

To prevent recurrence:

Never undertake any job unless you have been trained and assessed as competent

Regardless of your role, be prepared to challenge Life Saving Rule breaches

All Safety Communications are available at [Safety Central](#)

Part of our group of Safety Bulletins

Safety Alert

Safety Bulletin

Safety Advice

Shared Learning



ciras

CONFIDENTIAL REPORTING FOR SAFETY



Here are some of the reporting themes we take:



Work environment



Fatigue



Equipment



Safety practices



Rules & procedures



Welfare facilities



Shift design



Training & competence

Report hotline:
0800 4 101 101

Report textline:
07507 285 887

Freepost: **CIRAS**
www.ciras.org.uk

Other Safety Information



Safety 3-4-3 and Fleet 3-4-3

Issue 61 Spring 2019

The Spring Safety 3-4-3 & Fleet 3-4-3 will be sent out separately at a later date.