

March 2021 ACS Rail Updates

Welcome to the **March 2021** edition of ACS Rail updates.

The following pages contain summaries of updates which may be relevant to you. Please brief and distribute this information to the relevant people as per your internal procedures.

The ACS Team

Content	Page
Changes to Network Rail Standards	2
Making sure you are aware of the relevant standards.....	2
Welcome to the Network Rail Standards Portal	2
New and Up-Issued Standards.....	3
Withdrawn, Closed and Superseded Documents.....	4
Emergency Changes (Previously Known as Letters of Instruction)	5
RSSB - Standards and the rail industry	7
Railway Group Standards (RGSs).....	7
Rule Book (GE/RT8000)	7
Rule Book App.....	7
GE/RM8000 Master Module Manual	7
Controlled Document List 06 March 2021	8
Network Rail Safety Central – Information Section	20
Code of Conduct	20
Network Rail Safety Bulletins	20
Lessons Learnt / Shared Learning.....	20
Health & Wellbeing.....	21
Risk Management	21
Safety Films	21
Resource Library.....	21
SCO 24:7 (Supply Chain – Operations) Telephone	21
Emergency.....	21
To report a crime.....	21
Coronavirus (COVID -19)	22
Useful Links	23
Other Bulletins	26
Track Safety Alliance.....	26
Southern Shield.....	26
Safety 3-4-3 and Fleet 3-4-3	44

BRIEFING REQUIREMENTS:

NOTE: Contractors are responsible for arranging and undertaking and recording their own Safety and Awareness Briefings in accordance with their own processes and procedures.



Changes to Network Rail Standards

Issue 119: 06th March 2021 – 04th June 2021

Making sure you are aware of the relevant standards

Every employee has a duty to comply with any mandatory Network Rail company standards and procedures relevant to their role. It is vital therefore that all employees are aware of which standards are relevant to their area of work, and where to find them.

Welcome to the Network Rail Standards Portal

https://global.ihs.com/csf_home.cfm?&csf=NR

This site provides access to Network Rail standards. These are made freely available to all Network Rail suppliers and partner organisations through the use of a membership function.

For this access you will need to do the following:

- Create an online account by clicking My Account and selecting Create New Account.
- Search for the standard(s) that you wish to obtain and click Add to Cart
- When you have finished shopping, click on Cart then click on View Shopping Cart
- In the Membership Information section of the shopping cart, enter your Company Registration Number in the Membership# box and click the Add button

At that point, a 100% discount will be applied to your order, and you may proceed to checkout. All first time users will need to be verified for eligibility before receiving the standard(s) ordered. This may take up to seven days. Once your eligibility has been verified you will receive an e-mail with a link to the PDF of the standard.

NOTE: Organisations with access to the online collection of Network Rail Standards delivered via IHS Markit's Engineering Workbench platform should continue to access standards via that service.

Other Information

Network Rail Standards Subscriptions

IHS Global Ltd

Phone: 01344 328000 or email customer.support@ihs.com

Network Rail Standards & Controls Publications Manager

Neil Whitaker

Phone: 01908 782564

Network Rail Standards Hard Copy Document Centre

IHS Retail

Phone: 01344 328039

Fax: 01344 328005 or email: emeastore@ihs.com

Railway Group Standards

Rail Safety & Standards Board Enquiry Desk

Phone: 020 3142 5400 Website www.rssb.co.uk

Network Rail Technical Drawings

National Records Group

Email: nrgcivils@networkrail.co.uk

You must make sure that the team and the activities for which you are responsible comply with the Network Rail company standards and procedures. By doing this, you will be complying with the Network Rail Health & Safety Management System and relevant legislation.

The following pages contain summary extracts of the changes / new issue to the Network Rail Company Standards which may be relevant to you.

Standards Updates

New and Up-Issued Standards Issue 119 - 06 March 2021

References	Title	Replaces
NR/GN/CIV/100 Issue 2	Strategic Design Manual	NR/GN/CIV/100 Issue 1
NR/GN/CIV/200 Issue 2	Station Design Manual	NR/GN/CIV/200 Issue 1
NR/GN/CIV/300 Issue 2	Compliance Design Manual	NR/GN/CIV/300 Issue 1
NR/GN/CIV/400 Issue 2	Operational Property Manual	NR/GN/CIV/400 Issue 1
NR/L1/CIV/001 Issue 1	The Management of Buildings and Civils Infrastructure	New at Issue 119
NR/L2/CIV/096 Issue 1	Asset Protection and Optimisation Management of Outside Party Works	New at Issue 119
NR/L2/CIV/177 Issue 3	Monitoring Track Over or Adjacent to Construction Works	NR/L2/CIV/177 Issue 2
NR/L2/CIV/191 Issue 2	Mining Manual	NR/L2/CIV/191 Issue 1
NR/L3/CIV/151/F010 Issue 17	Index of Standard Designs and Details for Building and Civil Engineering Works	NR/L3/CIV/151/F010 Issue 16
NR/L2/CTM/025 Issue 2	Competence & Training in On-Track Plant Operation & Activities	NR/L2/CTM/025 Issue 1
NR/L3/CTM/302 Issue 3	Production and Maintenance of Training and Assessment Solutions	NR/L3/CTM/302 Issue 2
NR/L2/ELP/23001 Issue 1	Technical Requirements for High Voltage A.C. Switchgear used in Traction and Non- Traction Systems	NR/PS/ELP/27236 Issue 2 NR/SP/ELP/21018 Issue 2 NR/BS/LI/061
NR/L3/ELP/27237 Issue 22	Overhead Line Work Instructions	NR/L3/ELP/27237 Issue 21
NR/L2/ENV/122 Issue 1	Biodiversity	New at Issue 119
NR/L2/INF/02018 Issue 7	Management of Infrastructure Records	NR/L2/INF/02018 Issue 6
NR/L3/MTC/CP009 Issue 8	COVID-19 Contingency Plan: Safe Working Practices	NR/L3/MTC/CP009 Issue 7
NR/L3/MTC/MG0213 Issue 17	Index of Standard Maintenance Forms	NR/L3/MTC/MG0213 Issue 16
NR/L3/MTC/RCS0216 Issue 20	Risk Control Manual	NR/L3/MTC/RCS0216 Issue 19
NR/L3/OPS/045 Issue 15	National Operating Procedures Index	NR/L3/OPS/045 Issue 14
NR/L3/OPS/045 Issue 16	National Operating Procedures Index	NR/L3/OPS/045 Issue 15
NR/L3/OPS/255 Issue 1	Mitigation of Point Run Throughs Within Engineering Worksites – Points Stop Equipment (PSE) Process	New at Issue 119
NR/GN/OTK/5000 Issue 2	Index of Off-Track and Drainage Drawings	NR/GN/OTK/5000 Issue 1
NR/L2/OTK/5100 Issue 4	Boundary Measure Management Manual	NR/L2/OTK/5100 Issue 3
NR/L2/P3M/201 Issue 1	Project Acceleration in a Controlled Environment (PACE)	New at Issue 119
NR/L2/RSE/02009 Issue 7	Engineering Management for Projects	NR/L2/RSE/02009 Issue 6
NR/L2/SIG/10157 Issue 4	Signal Sighting Assessment Process	NR/L2/SIG/10157 Issue 3
NR/L2/SIG/10158 Issue 2	Specification for Signal Sighting Assessment	NR/L2/SIG/10158 Issue 1
NR/L2/SIG/11201 Issue 13	Signalling Design Handbook	NR/L2/SIG/11201 Issue 12
NR/L3/TEL/31104 Issue 4	Process for Managing Telecoms Software/Hardware Changes	NR/L3/TEL/31104 Issue 3
NR/L3/TEL/40047 Issue 4	Process for the Management of Safety Related Reports for Telecoms Failures	NR/L3/TEL/40047 Issue 3
NR/L2/TRK/001 Issue 17	Inspection and Maintenance of the Permanent Way	NR/L2/TRK/001 Issue 16
NR/L2/TRK/2102 Issue 9	Design and Construction of Track	NR/L2/TRK/2102 Issue 8
NR/L3/TRK/003 Issue 35	Index of Track Engineering Forms	NR/L3/TRK/003 Issue 34
NR/L3/TRK/0027 Issue 3	Excavation and Ballast as Built	NR/L3/TRK/0027 Issue 2
NR/L3/TRK/3406 Issue 5	Design, Installation and Maintenance of Modular Bearer Joints	NR/L3/TRK/3406 Issue 4
NR/L3/TRK/3415 Issue 2	Refurbishment of Switches and Crossings	NR/L3/TRK/3415 Issue 1
NR/L3/TRK/7014 Issue 1	Inspection and Maintenance of Permanent Way using Risk Based Maintenance (Plain Line CWR Track)	New at Issue 119

Standards Updates

Withdrawn, Closed and Superseded Documents

References	Title	Replaced by/Status
NR/GN/CIV/100 Issue 1	Strategic Design Manual	NR/GN/CIV/100 Issue 2
NR/GN/CIV/200 Issue 1	Station Design Manual	NR/GN/CIV/200 Issue 2
NR/GN/CIV/300 Issue 1	Compliance Design Manual	NR/GN/CIV/300 Issue 2
NR/GN/CIV/400 Issue 1	Operational Property Design Manual	NR/GN/CIV/400 Issue 2
NR/GN/OHS/00155 Issue 1	Short-Term Changes in the Creation and Application of Safe Work Packs and Briefing Arrangements COVID-19 Contingency Plan (Guidance for Regions on NR/L2/OHS/019)	NR/GN/OHS/00155 Issue 2 (Network Rail Internal only)
NR/GN/OTK/5000 Issue 1	Index of Off-Track Drawings	NR/GN/OTK/5000 Issue 2
NR/L2/CIV/177 Issue 2	Monitoring Track Over or Adjacent to Construction Works	NR/L2/CIV/177 Issue 3
NR/L2/CIV/191 Issue 1	Mining Manual	NR/L2/CIV/191 Issue 2
NR/L2/CTM/025 Issue 1	Competence & Training in On-Track Plant Operation	NR/L2/CTM/025 Issue 2
NR/PS/ELP/27236 Issue 2	25 KV AC Single Phase Switchgear & Ancillary Equipment	NR/L2/ELP/23001 Issue 1
NR/SP/ELP/21018 Issue 2	Specification of Indoor Switchgear for 11, 22 & 33 kV Distribution Systems for D.C. Traction Substations	NR/L2/ELP/23001 Issue 1
NR/L2/INF/02018 Issue 6	Specification for the Management of Safety Related Infrastructure Records	NR/L2/INF/02018 Issue 7
NR/L2/OTK/5100 Issue 3	Boundary Measures Manual	NR/L2/OTK/5100 Issue 4
NR/L2/INI/02009 Issue 6	Engineering Management for Projects	NR/L2/RSE/02009 Issue 7
NR/L2/SIG/10157 Issue 3	Signal Sighting Assessment Process	NR/L2/SIG/10157 Issue 4
NR/L2/SIG/10158 Issue 1	Specification for Signal Sighting Assessment	NR/L2/SIG/10158 Issue 2
NR/L2/SIG/11201 Issue 12	Signalling Design Handbook	NR/L2/SIG/11201 Issue 13
NR/L2/TRK/001 Issue 16	Inspection and Maintenance of Permanent Way	NR/L2/TRK/001 Issue 17
NR/L2/TRK/2102 Issue 8	Design and Construction of Track	NR/L2/TRK/2102 Issue 9
NR/L3/CIV/151/F010 Issue 16	Index of Standard Designs and Details for Building and Civil Engineering Works	NR/L3/CIV/151/F010 Issue 17
NR/L3/CTM/302 Issue 2	Production and Maintenance of Training and Assessment Solutions	NR/L3/CTM/302 Issue 3
NR/L3/ELP/27237 Issue 21	Overhead Line Work Instructions	NR/L3/ELP/27237 Issue 22
NR/L3/MTC/MG0213 Issue 16	Index of Standard Maintenance Forms	NR/L3/MTC/MG0213 Issue 17
NR/L3/MTC/RCS0216 Issue 19	Risk Control Manual	NR/L3/MTC/RCS0216 Issue 20
NR/L3/OPS/045 Issue 14	National Operating Procedures Index	NR/L3/OPS/045 Issue 15
NR/L3/OPS/045 Issue 15	National Operating Procedures Index	NR/L3/OPS/045 Issue 16
NR/L3/TEL/31104 Issue 3	Process for Managing Telecoms Software/Hardware Changes	NR/L3/TEL/31104 Issue 4
NR/L3/TEL/40047 Issue 3	Process for the Management of Safety Related Reports for Telecoms Failures	NR/L3/TEL/40047 Issue 4
NR/L3/INI/TK0027 Issue 2	Test & Inspection Plan	NR/L3/TRK/0027 Issue 3
NR/L3/TRK/003 Issue 34	Index of Track Engineering Forms	NR/L3/TRK/003 Issue 35
NR/L3/TRK/3406 Issue 4	Design, Installation and Maintenance of Modular Bearer Joints	NR/L3/TRK/3406 Issue 5
NR/L3/TRK/3415 Issue 1	Refurbishment of Switches and Crossings	NR/L3/TRK/3415 Issue 2
NR/L2/ELP/23001 Issue 2	Maintenance of Plasma Screens used for Passenger Information Displays	Withdrawn

1

Standards Updates

Emergency Changes (Previously Known as Letters of Instruction)

To access any active Emergency Change you need to refer to its associated Network Rail Standard. The front page of the standard will provide details of the relevant change. When using the online service there will be an active link to each relevant change.

Historic changes (where text has been crossed out) will be removed next publication. Please note, some changes may stay current after the stated Expiry Date

Reference	Title	Issue	Date
NR/BS/LI/462	Standard/control document affected: NR/L3/OPS/251 (Issue 3), Unmanned Aircraft System (Drone/UAS) Operations	1	08/12/2020
NR/BS/LI/461	Standard/control document affected: NR/L3/ELP/21067 (Issue 5), Instructions for making out, issuing and cancelling high voltage Permits to Work, Sanctions for Test and Circuit State Certificates	1	13/11/2020
NR/BS/LI/457	Standard/control document affected: NR/L3/ELP/29987 [Working On or About 25 kV a.c Electrified Lines]	1	22/12/2020
NR/BS/LI/456	Standard/control document affected: NR/L3/ELP/21067 (Issue 5), Instructions for making out, issuing and cancelling high voltage Permits to Work, Sanctions for Test and Circuit State Certificates	1	14/09/2020
NR/BS/LI/455	Standard/control document affected: NR/L3/OPS/045/3.17 Weather Arrangements (Issue 03)	1	14/09/2020
NR/BS/LI/454	Standard/control document affected: NR/L3/OPS/021 Module 13 Managing the Weather – Extreme Weather Response Process (Issue 01)	1	14/09/2020
NR/BS/LI/453	Standard/control document affected: NR/L3/OPS/021 Module 8 Managing The Weather - Earthworks (Issue 01)	1	18/08/2020
NR/BS/LI/452	Standard/control document affected: NR/L3/ELP/29987 [Working On or About 25 kV a.c Electrified Lines] – SUPERSEDED BY NR/BS/LI/457 – HISTORIC ON 22/12/2020	1	14/08/2020
NR/BS/LI/448	Standard/control document affected: NR/L2/CTM/025 (Issue 1), Competence & Training in On-Track Plant Operation	1	23/10/2020
NR/BS/LI/447	Standard/control document affected: NR/SP/ELP/21060 (Issue 2), Issue of Safety Documentation for Work on 650/750 V dc Apparatus	1	12/06/2020
NR/BS/LI/446	Standard/control document affected: NR/L3/ELP/29987 Issue 5 [Working On or About 25 kV a.c Electrified Lines] - SUPERSEDED BY NR/BS/LI/457 – HISTORIC ON 31/12/2020	1	22/05/2020
NR/BS/LI/445	Standard/control document affected: NR/L3/ELP/27241 (Issue 4), Fixed Plant Work Instructions	1	27/03/2020
NR/BS/LI/444	Standard/control document affected: NR/L2/ELP/27238 (Issue 7), Maintenance Specification for Fixed Plant Equipment	1	27/03/2020
NR/BS/LI/443	Standard/control document affected: NR/L2/ELP/21088 (Issue 3), General Maintenance Parameters for Overhead Line Electrification Equipment	1	25/03/2020
NR/BS/LI/442	Standard/control document affected: NR/L2/TRK/1054 (Issue 5), Inspection of cast, welded and fabricated crossings in the track	1	25/03/2020
NR/BS/LI/441	Standard/control document affected: NR/L2/TRK/053 (Issue 9), Inspection and Repair to Control the Risk of Derailment at Switches	1	25/03/2020
NR/BS/LI/440	Standard/control document affected: NR/L2/TRK/001 (Issue 15), Inspection and Maintenance of Permanent Way	1	25/03/2020
NR/BS/LI/432	Standard/control document affected: NR/L3/SIG/10661 (Issue 18/19), Signalling Maintenance Task Intervals – WITHDRAWN - HISTORIC ON 05/12/2020	1	23/03/2020
NR/BS/LI/429	Standard/control document affected: NR/SP/CTM/016 Issue 1, Competency & Training in Fixed Plant Engineering	1	15/06/2020
NR/BS/LI/428	Standard/control document affected: NR/L3/TRK/3510/A01 (Issue 1), Lubrication of Plain Line Running Rails, Check Rails and S&C	1	22/07/2020
NR/BS/LI/426	Standard/control document affected: NR/L1/CIV/032 (Issue 2), The Management of Structures	2	20/07/2020
NR/BS/LI/424	Standard/control document affected: NR/SP/SIG/19812 (issue 1), Cross Track Cable Management – SUPERSEDED BY NR/L2/SIG/19812 Issue 2 – HISTORIC ON 06/03/2021	2	22/05/2020
NR/BS/LI/419	Standard/control document affected: NR/L3/ELP/29987 [Working On or About 25 kV a.c. Electrified Lines] (Issue 5) – SUPERSEDED BY NR/BS/LI/457 – HISTORIC ON 31/12/2020	2	13/02/2020

Standards Updates

Reference	Title	Issue	Date
NR/BS/LI/389	Standard affected: NR/L2/SIG/30009 (Issue 11). Signalling Principles Handbook – SUPERSEDED BY NR/L2/SIG/30009 Issue 19 – HISTORIC ON 06/03/2021	1	13/02/2017
NR/BS/LI/383	Standard affected: NR/L2/CTM/021 (Issue 4). Competence and Training	2	08/12/2016
NR/BS/LI/371	Standard affected: NR/L2/CIV/162 (Issue 2). Platform Extensions. Location of metal structures on Third Rail area Station Platforms	1	02/03/2016
NR/BS/LI/348	Requirements for undertaking the roles of Lead Examiner and Examining Engineer for the examination of Tunnels. Standards affected: NR/L3/CIV/006 Part 4A Issue 1, NR/L3/CIV/006 Part 4B Issue 1 and NR/L3/CIV/006 Part 1D Issue 1. SUPERSEDED BY NR/L3/CIV/006 ISSUE 9 – HISTORIC ON 01/04/2021	1	23/02/2015
NR/BS/LI/347	Standard affected: NR/L2/CTM/028 (Issue 2). Competence and Training	1	16/01/2015
NR/BS/LI/342	Standard affected: NR/SP/ELP/21028 (Issue 3). Specification for ancillary wiring of electrical distribution equipment on A.C. and D.C. electrified lines	1	13/04/2016
NR/BS/LI/331	Requirements for parapet heights on over bridge and footbridge structures spanning overhead line electrification equipment	3	18/12/2020
NR/BS/LI/328	Standard affected: NR/SP/ELP/21104 (ISSUE 2). Design and Installation of Electric Track Equipment for DC Electrified Lines	1	28/03/2014
NR/BS/LI/326	Standard affected: NR/L2/OHS/050 (Issue 4), Sentinel Scheme Rules	1	16/04/2014
NR/BS/LI/306	Standard affected: NR/L1/CIV/032: The Management of Structures [Issue 2]	2	26/09/2014
NR/BS/LI/305	Standards Affected: NR/L2/TRK/001 Issue 6. NR/L2/TRK/2102 Issue 6. NR/L2/TRK/3038 Issue 5. NR/L2/TRK/0032 Issue 5. NR/L2/TRK/0132 Issue 6. NR/L3/TRK/3510/A01 Issue 1. NR/L3/TRK/3510/B01 Issue 1. NR/L3/TRK/1015 Issue 2	2	31/01/2014
NR/BS/LI/292	NR/L3/TRK/1010 (Issue 2). Management of responses to extreme weather conditions at structures. earthworks and other key locations	1	18/07/2013
NR/BS/LI/256	Standard affected: NR/SP/ELP/27243 (Issue 1). Specification for Signalling Power Supplies	2	24/10/2016
NR/BS/LI/217	Standards affected: NR/SP/ELP/27224 [Issue: 2] Specification for the installation of cable routes forming part of the traction distribution system	4	25/01/2016
NR/BS/LI/163	Standard affected: RT/CE/S/130 (Issue 1). Flash-Welded Rails: Site Welded Strings	2	01/10/2010
NR/BS/LI/154	Use Of The Geismar THR542 Lightweight Stressing Equipment In Tandem. Standard affected: NR/L2/TRK/3011 (Issue 6)	1	18/01/2010
NR/BS/LI/106	Electric Points Heating - standard affected NR/L2/ELP/40045	2	01/09/2011
NR/BS/LI/101	Standard affected: RT/CE/S/077 Storage. Installation & Testing of TSR & ESR AWS	1	08/09/2008
NR/BS/LI/091	Use of CEMBRE Rail Web Connection Systems on DC Conductor Rail - standard affected NR/GN/ELP/27020	1	27/05/2008
NR/BS/LI/061	Dangerous Incident Notification: 11kV indoor switchgear type YSF6 manufactured by Yorkshire Switchgear WITHDRAWN BY NR/L2/ELP/23001 ISSUE 1 – HISTORIC ON 06/03/2022	1	23/11/2006
NR/BS/LI/060	Traction electrical distribution sites with compromised earthing due to theft of cables - affected standard NR/SP/ELP/21032	1	23/11/2006
NR/BS/LI/047 - E&P	Bimold Connections on Rectifier Transformers at DC Traction Substations	1	05/05/2006
NR/BS/LI/040	650 V D.C. Traction Power Cables - Support Systems - affected standard NR/SP/ELP/27224	1	20/12/2005
NR/BS/LI/032	Labelling of Track Isolating Switches (T.I.S)	1	17/10/2005
NR/BS/LI/028	Segregation of D.C. Track Feed Cables	1	22/08/2005
NR/BS/LI/025	Paralleling of EDFE Supply Points New Cross - Croydon. Wimbledon. Northfleet: Restrictions	3	07/01/2008

RSSB - Standards and the rail industry

Access all current (and many withdrawn) Railway Group Standards, Rail Industry Approved Codes of Practice (RACOPs), Guidance Notes (GNs) and Rail Industry Standards (RISs).

<http://www.rssb.co.uk/railway-group-standards>

Useful links:

- [Catalogues](#)
- [Latest Updates to Standards](#)
- [Using Standards](#)
- [Finding and staying up-to-date with standards](#)

Railway Group Standards (RGSs)

Mandatory requirements for the GB mainline railway system are defined in Railway Group Standards (RGSs). They facilitate the management and operation of the mainline railway as a shared system. RGSs set out technical requirements applicable to vehicles or the infrastructure, or processes applicable to transport operators.

Standards Catalogue <http://www.rssb.co.uk/railway-group-standards>

Rule Book (GE/RT8000)

The Rule Book (GE/RT8000) and other National Operations Publications are documents that contain direct instructions for railway staff.

The Rule Book is held in printed copy by over 100,000 people, and as such is probably the best known and most widely distributed in the entire RSSB catalogue. Even greater numbers of people are known to use it as a reference and information document both from the United Kingdom and abroad using the online version.

You can still order hard copies of individual standards and Rule Book modules or handbooks from Willsons External link (Tel: 01636 702334) or download them from the Railway Group Standards section of this site.

Rule Book App

Get 24/7 access to the Rule Book via your phone, tablet, desktop or laptop with the Rule Book App. It's easy to use, search, personalise and update, and you can acknowledge amendments with one touch. Find out more on our dedicated [Rule Book App page](#).

Rule Book Briefing Leaflet

[GERT8000-RBBL Iss 35](#)

This Leaflet contains details of changes to the Rule Book (GERT8000) being published in March 2021 and in-force June 2021.

GE/RM8000 Master Module Manual

RSSB has produced this manual to provide end-users with access to the content of GE/RT8000 (The Rule Book) that is relevant to all roles as defined in the Rule Book Matrix published by RSSB.

[GERM8000-master-module Iss 9](#)

Issued: 06/03/2021

In Force: 05/06/2021



Controlled Document List 06 March 2021

Ref. / Title	Issue No	Issue Date
RAIL MANAGEMENT SYSTEM		
Rail Management System		

Ref. / Title	Issue No	Issue Date
GROUP STANDARDS - http://www.rssb.co.uk/railway-group-standards		
GERM8000 Possession Workers Manual	5	09/2020
GERM8000 Possession Workers Manual	6	03/2021
GERM8000 Track Workers Manual	7.1	12/2020
GERM8000 Track Workers Manual	8	03/2021
GERM8000-master-module Master Module Manual	8.1	12/2020
GERM8000-master-module Master Module Manual	9	03/2021
Modular Rulebook GE/RT8000/ (See separate page for listed modules and issue dates)	-----	-----
GEGN8613 Application of human factors within safety management systems	1	03/2021
GLRT1210 AC Energy Subsystem and Interfaces to Rolling Stock Subsystem	2	12/2019
GLRT1212 DC Conductor Rail Energy Subsystem and Interfaces to Rolling Stock Subsystem	1	09/2015
GOGN3655 Guidance on Medical Fitness for Railway Safety Critical Workers	2	06/2014
RIS-1530-PLT Rail Industry Standard for Technical Requirements for On-Track Plant and their Associated Equipment and Trolleys	6	12/2015
RIS-2750-RST Supplier Assurance	1	12/2017
RIS-3118-TOM Incident Response Planning & Management	2	12/2019
RIS-3119-TOM Accident and Incident Investigation	2.2	03/2019
RIS-3279-TOM High Visibility Clothing	2	09/2019
RIS-3701-TOM Confidential Reporting System for Rail Staff	2.1	12/2019
RIS-8046-TOM Spoken Safety Critical Communications	2	12/2016
RIS-8047-TOM Reporting of Safety Related Information	2	03/2018
RIS-8070-TOM Testing Railway Safety Critical Workers for Drugs and Alcohol	1	12/2016

Ref. / Title	Issue No	Issue Date
LONDON UNDERGROUND (LU) STANDARDS		
LUL G1163 Stations DLO - Failure Reporting Analysis & Corrective Action System (FRACAS)	A2	11/2015
LUL G1164 Making a Referral to the Drug and Alcohol Advisory and Treatment Service	A2	04/2014
LUL G1234 Incident recording, investigation and reporting	A4	04/2017
LUL G1241 Alcohol and Drugs at Work Guidelines and Information For Managers	6	07/2009
LUL G1242 Alcohol and Drugs at Work – Managers For Cause and Post Incident Check List	A4	04/2020
LUL G1249 Environmental Incident Categories	A5	07/2018
LUL G2020 Wuhan novel coronavirus	A1	01/2020
LUL G557 Electronic Incident Reporting Form (eIRF)	A5	03/2014
LUL LF29 Incident investigation & reporting or recording What you need to remember	01	n/a
LUL R0350 Guidance and advice for the use of personal protective equipment	A1	01/2014
LUL R0403 Personal Protective Equipment (PPE) catalogue	1.1	01/2014
LUL S1251 Alcohol and Work; includes Written Notice 12/24/2014, 6/16/2015	A2	11/2011
LUL S1257 Drugs and Work; Includes Written Notice 01317: 12/24/2014	A2	11/2011
LUL S1538 Assurance	A16	04/2020



Ref. / Title	Issue No	Issue Date
LONDON UNDERGROUND (LU) STANDARDS		
LUL S1548 Safety Critical Work	A6	02/2020
LUL S1552 Contract QUENSH Conditions Incorporating written notice: 10/05/2017, 02/05/2019	A18	11/2016
LUL S1601 Management Arrangements to Assure Medical Fitness	A5	01/2012
LUL TE-HBS-0017 Managing competence and training	A1 Cat 3	02/1995

Ref. / Title	Issue No	Issue Date
NETWORK RAIL STANDARDS		
NR/CAT/STP/001 Catalogue of Network Rail Standards	119	03/2021
PTS Handbook RT 3170	10	2020
NR/L2/AMG/1030 Working Safely in the Vicinity of Buried Services	1	12/2008
NR/GN/CIV/208 Ground Investigation	1	12/2018
NR/L2/CIV/003 Engineering and Architectural Assurance of Building and Civil Engineering Works	6	09/2020
NR/L2/CIV/035 Management of Structures	2	06/2019
NR/L2/CIV/086 Management of Earthworks	9	03/2019
NR/L2/CIV/250 Landlord's Consent	1	03/2020
NR/L2/CIV/295 Scour Assessment of Bridges, Culverts and Retaining Walls	2	09/2018
NR/L3/CIV/00012 Road Vehicle Incursions: Risk Assessment of Public and Non-Public Bridge and Neighbouring Sites	2	09/2020
NR/L3/CIV/006 Handbook for the Examination of Structures	9	09/2019
NR/L3/CIV/040 Work Instruction for the use of Protective Coating Systems	2	06/2019
NR/L3/CIV/170 Assessment of Tunnels	1	03/2019
NR/L3/CIV/185 Management of Reports of Safety Related Geotechnical Incidents	3	09/2020
NR/L3/CIV/190 Developing Extreme Weather Plans	1	12/2017
NR/GN/CPR/401 Guidance on Contractual Health and Safety Requirements	1	12/2008
NR/L2/CPR/201 Supplier Qualification	2	12/2011
NR/L2/CPR/302 Supplier Qualification - Core Requirements (For PCL / POL Holders)	2	09/2011
NR/L2/CSG/STP001 Standards and Controls Management Manual	8	06/2020
NR/CS/CTM/001 Competence Management	1	12/2006
NR/L2/CTM/017 Competence and Training in Civil Engineering	1	06/2006
NR/L2/CTM/021 Competence & Training in Track Safety	4	12/2010
NR/L2/CTM/025 Competence & Training in On-Track Plant Operation & Activities	2	03/2021
NR/L2/CTM/201 Competence Management	2	03/2012
NR/L2/CTM/202 Quality Assurance in Training & Assessment	3	12/2019
NR/L2/CTM/207 Competence & Training in Planning	2	06/2012
NR/L2/CTM/209 Competence & Training in Safe System of Work Planner	1	12/2010
NR/L2/CTM/220 Competence & Training in Portable, Transportable & Mobile Plant Operation	1	06/2012
NR/L2/CTM/223 Competence & Training in Managing Site Safety	1	06/2011

Controlled Documents



Ref. / Title	Issue No	Issue Date
NETWORK RAIL STANDARDS		
NR/L2/ELP/21085 Earthing and Bonding on A.C. Electrified Railways	4	06/2020
NR/L2/ELP/21087 Risk Based Maintenance for Overhead Line Assets	9	06/2020
NR/L2/ELP/21088 General maintenance parameters for 25 kV overhead line electrification equipment	3	12/2015
NR/L2/ELP/21090 OLE Seasonal Preparation Response for Extreme Weather	1	12/2020
NR/L2/ELP/23002 Specification for High Voltage AC Cables, AC Traction Earthing and Bonding Cables DC Traction Cables, Pilot Cables and Associated Accessories	1	12/2020
NR/L2/ELP/27009 Overhead Line Equipment Campaign Changes	3	03/2017
NR/L2/ELP/27023 Conductor Rail Heating Standard	1	12/2020
NR/L2/ELP/27307 Management of M&EE Safety Related Event Reports	4	12/2017
NR/L2/ELP/27402 Specification for protection and control devices for electrical systems	1	12/2009
NR/L2/ELP/27715 Overhead Contact System Design Specification	3	09/2018
NR/L2/ELP/27800 Specification for 25 kV a.c. Earthing Pantographs and Interface with Vehicle (On Track Plant or Road Rail Vehicles)	1	12/2020
NR/L3/ELP/27051 Working Instructions for d.c. Electrified Lines in the Liverpool Area	6	09/2019
NR/L3/ELP/27115 Arrangements for Isolation of the Conductor Rail for Pre-Planned Possessions of the Line	4	09/2018
NR/L3/ELP/27140 Application of Short Circuits for Conductor Rail Isolations	4	03/2019
NR/L3/ELP/27237 Overhead Line Work Instructions	21	12/2020
NR/L3/ELP/27237 Overhead Line Work Instructions	22	03/2021
NR/L3/ELP/3091 DC Electrified Lines Working Instructions	5	09/2019
NR/SP/ELP/29987 Working on or About 25 KV AC Electrified Lines	5	12/2018
NR/L2/ENV/015 Environment and Social Minimum Requirements for Projects – Design and Construction	8	03/2019
NR/L2/ENV/115 Environment and Social Management System Requirements	1	03/2018
NR/L2/ENV/120 Waste Management	1	12/2019
NR/L2/ENV/121 Managing Environmental and Social Impact of Noise and Vibration	1	12/2019
NR/L2/ENV/122 Biodiversity	1	03/2021
NR/L2/ENV/123 Prevention of Pollution to Land and Water	1	12/2019
NR/L2/INF/02203 Controlled Publications - Issue & Receipt	2	12/2011
NR/L3/INF/02204 Controlled Publications - Process & Accountabilities	3	12/2011
NR/L3/INF/02226 Corporate Records Retention Schedule	3	12/2017
NR/GN/INI/001 Guidance on the Management of Door to Door Work & Travel Time	1	12/2008
NR/L2/INI/CP0070 Principal Contractor Licensing Scheme	5	06/2017
NR/L2/INI/EDT/CP0091 Specification for Computer Aided Design	4	12/2018
NR/L2/INI/P3M/101 Business Process - Governance of Railway Investment Projects (GRIP) – for Projects	5	09/2017
NR/L2/INI/P3M/104 Network Rail Requirements (formerly NR/L1/INI/CP0095)	2	09/2017
NR/L3/INI/CP0028 Contract Requirements - Quality	3	06/2012
NR/L3/INI/CP0036 Provision of Welfare Facilities	4	08/2008
NR/L3/INI/CP0064 Delivering Work Within Possessions	5	06/2017
NR/L3/INV/3001 Reporting and Investigation Manual Also replaces NR/L2/INV/002	6	12/2020

Controlled Documents



Ref. / Title	Issue No	Issue Date
NETWORK RAIL STANDARDS		
NR/GN/MTC/089 Guidance for the Exchange of Asset Data and the Continuing Maintenance of Assets Undergoing Change	1	09/2020
NR/L2/MTC/089 Arrangements for the Exchange of Asset Data and the Continuing Maintenance of Assets Undergoing Change	2	12/2018
NR/L3/MTC/CP009 COVID-19 Contingency Plan: Safe Working Practices	3	05/2020
NR/L3/MTC/CP009 COVID-19 Contingency Plan: Safe Working Practices	8	03/2021
NR/L3/MTC/EN0100 Waste Management	3	06/2012
NR/L3/MTC/EN0101 Management of Discharges to Sewers & Controlled Waters	3	06/2012
NR/L3/MTC/EN0225 Environ Management System for Infrastructure Maintenance	1	06/2012
NR/L3/MTC/EP0152 Working on or Adjacent to Conductor Rail	5	12/2011
NR/L3/MTC/MG0173 Monitoring of Spoken Safety Communications	3	06/2019
NR/L3/MTC/MG0210 Management of Maintenance Work within a Worksite to Prevent a Possession Overrun	3	06/2019
NR/L3/MTC/MG0213 Index of Standard Maintenance Forms	16	09/2020
NR/L3/MTC/MG0213 Index of Standard Maintenance Forms	11	03/2021
NR/L3/MTC/RCS0216 Risk Control Manual	19	12/2020
NR/L3/MTC/RCS0216 Risk Control Manual	20	03/2021
NR/L3/MTC/RCS0216/OLE02 Risk Control Manual: Working on Red Bonds/Impedance Bonds	2	03/2012
NR/L3/MTC/SE0115 Confined Spaces Working & Entry Procedure	2	06/2008
NR/L3/MTC/SE0117 Planned Assurance Inspections and Site Surveillance	4	09/2018
NR/L3/MTC/SE0220 Planning and Delivering Safe Working at Height	2	09/2020
NR/CS/OHS/002 Policy on Working Safely	1	02/2007
NR/GN/OHS/00155 Short-term Changes in the Creation and Application of Safe Work Packs and Briefing Arrangements COVID-19 Contingency Plan (Guidance for Regions on NR/L2/OHS/019)	1	06/2020
NR/L1/OHS/051 Drugs and Alcohol	6	12/2015
NR/L1/OHS/052 Traumatic Incident Management	1	06/2016
NR/L1/OHS/053 Assessing Risk of Stress in the Workplace	1	06/2016
NR/L2/OHS/00110 First Aid at Work	6	09/2017
NR/L2/OHS/00112 Worksafe Procedure	3	09/2020
NR/L2/OHS/00120 Testing for Drugs and Alcohol	5	12/2015
NR/L2/OHS/00124 Competence Specific Medical Fitness Requirements and Occupational Health Provider Requirements for Medical Assessments	3	12/2016
NR/L2/OHS/003 Fatigue Risk Management	9	12/2019
NR/L2/OHS/0044 Planning and Managing Construction Work replaces NR/L3/INI/CP0044 Work Package Planning	5	12/2016
NR/L2/OHS/0047 Managing Health and Safety in Construction (Application of the Construction (Design and Management) Regulations to Network Rail)	7	06/2019
NR/L2/OHS/005 High Street Environment & Conditions for Work outside Network Rail Managed Infrastructure	7	09/2010
NR/L2/OHS/019 Safety of People working on or near the Line	10	12/2020
NR/L2/OHS/020 Track Visitor Permits	5	08/2008
NR/L2/OHS/021 Personal Protective Equipment and Work Wear	3	06/2009
NR/L2/OHS/022 Working Safely at Height	2	03/2020
NR/L2/OHS/032 Training, Competence and Assessment in Accident and Incident Investigation	2	12/2020
NR/L2/OHS/050 Sentinel Scheme Rules	4	03/2011

Controlled Documents



Ref. / Title	Issue No	Issue Date
NETWORK RAIL STANDARDS		
NR/L2/OHS/157 Health surveillance for silica and asbestos and the management of diagnosed occupational respiratory conditions	1	03/2017
NR/L3/OHS/0046 The Reporting, Investigation and Recording of Safety and Sustainable Development Events and Close Calls within Infrastructure Projects	3	06/2018
NR/L3/OHS/019-IP Planning and Delivering Safe Work – Implementation Principles for Infrastructure Projects	1	06/2018
NR/L2/OPS/033 Recording Spoken Safety Critical Communications between Possession Management and Engineering Trains / On-Track Plant Drivers when Working in Possessions and Worksites.	3	06/2019
NR/L2/OPS/291 Railway Crime Risk Management	1	12/2019
NR/L3/OPS/084 Line Clear Arrangements Following Engineering Works in Axle Counter Areas – Line Clear Verification Process	5	03/2020
NR/L3/OPS/251 Unmanned Aircraft System (Drone/UAS) Operations	3	09/2019
NR/OPS/DEV/009 Network Rail: Good Practice Guide for Working at Operational Locations (Signal Boxes, Electrical Control Rooms, Controls) During COVID 19	2	06/2020
NR/GN/OTK/5000 Issue 1 Index of Off-Track Drawings	4	06/2019
NR/GN/OTK/5000 Issue 1 Index of Off-Track Drawings	2	03/2021
NR/L2/OTK/5201 Lineside Vegetation Management Manual	5	12/2020
NR/GN/RMVP/0200 Infrastructure Plant Manual Guidance	1	12/2018
NR/L2/RMVP/0200 Infrastructure Plant Manual	10	12/2018
NR/L3/RMVP/0201 Calibration Work Instruction Manual Replaces NR/L3/MTC/ME0201 This standard provides the index and version control of Calibration Work Instructions for the internal calibration and comparison checking of Inspection, Measuring and Test Equipment (IMTE).	2	09/2011
NR/L2/RSE/0005 Product Design for Reliability	5	12/2020
NR/L2/RSE/070 Engineering Verification	2	12/2011
NR/L2/RSE/100 Network Rail Acceptance Panel processes	5	06/2019
NR/L1/RSK/001 Network Rail Risk Policy	3	09/2019
NR/L2/SCO/302 Supplier Qualification Requirements	1	06/2020
NR/L3/SCO/313 On-Track Machines (OTMs) Driver and Operations Standards Manual	9	12/2020
NR/L3/SCO/314 Engineering Assurance for T&RS, OTM and OTP Projects	1	12/2018
NR/L3/SCO/320 Supplier Quality Assurance (SQA)	2	09/2020
NR/SIN/185 Identification and Inspection of Plain-Lined S&C	1	06/2019
NR/L2/SIG/11201 Signalling Design Handbook	12	12/2020
NR/L2/SIG/14201 Signalling Risk Assessment Handbook	5	12/2020
NR/L2/SIG/30009 Signalling Principles Handbook	19	12/2020
NR/L2/SIG/30014 Signalling Works Testing Handbook	17	12/2020
NR/L3/SIG/10064 General Instructions to Staff Working on S&T Equipment	9	12/2020
NR/L3/SIG/10661 Signal Maintenance Task Intervals	20	12/2020
NR/L3/SIG/10663 Signal Maintenance Specifications	12	12/2020
NR/L3/SIG/11231 Signal Maintenance Testing Handbook	15	03/2020
NR/L3/SIG/MG0110 Imposition & Removal of Temporary Speed Restrictions	3	06/2012



Ref. / Title	Issue No	Issue Date
NETWORK RAIL STANDARDS		
NR/L2/SIGELP/50000 Safe working and maintenance on or near Signalling Power Distribution Equipment above 175 volts	3	03/2017
NR/L3/SIGELP/50001 Signalling Power Distribution Equipment above 175 Volts	3	03/2017
NR/L3/SIGELP/50002 Safe Working Practices When Working on or Near Signalling Power Distribution Equipment Above 175 Volts	1	12/2016
NR/L3/SIGELP/50003 Safe Working Practices When Working on or Near Signalling Equipment	1	03/2018
NR/L2/TEL/30067 The Transmission of Safety Related Information	2	12/2011
NR/L2/TEL/30156 Functional Requirements for Safety Related Communications Equipment for On Track Plant Working	1	12/2011
NR/GN/TRK/7001 Index of Track Work Information Sheets (TWI)	16	09/2019
NR/L1/TRK/100 Management of Track Assets	1	03/2020
NR/L2/TRK/001 Inspection and Maintenance of Permanent Way	16	12/2020
NR/L2/TRK/001 Inspection and Maintenance of Permanent Way	17	03/2021
NR/L2/TRK/4239 Track Bed Investigation, Design and Installation	2	09/2020
NR/L3/TRK/003 Index of Track Engineering Forms	34	12/2020
NR/L3/TRK/003 Index of Track Engineering Forms	35	03/2021
NR/L3/TRK/3530 Track Lubricants	1	06/2012
NR/L3/TRK/7006 Creation and Application of Initial ESR Design	1	03/2019
NR/L3/TRK/7014 Inspection and Maintenance of Permanent Way using Risk Based Maintenance (Plain Line CWR Track)	1	03/2021

Controlled Documents



Ref. / Title	Reference
OTHER STANDARDS & GUIDANCE	
BS EN ISO 14001:2015	2015
BS EN ISO 9001:2015	2015
BS EN ISO 45001:2018	2018
BS OHSAS 18001:2007 BS OHSAS 18001 has been replaced by ISO 45001 the new international standard for occupational health and safety. Organizations who are already certified to BS OHSAS 18001 will need to upgrade to ISO 45001 by March 2021.	2007
Investigating Accidents and Incidents – HS(G)245	ISBN 9780717628278
Management of Health and Safety at Work Regulations 1999 Approved Code of Practice and guidance	ISBN 9780717624881
Managing health and safety in construction Construction (Design and Management) Regulations 2015. Guidance on Regulations	ISBN 9780717666263
Successful Health and Safety Management – HS(G)65	ISBN 9780717612765
Sentinel Scheme Rules https://info.railsentinel.co.uk/about/rules/	V4 26 March 2020 Compliance Date 26 March 2020

Ref. / Title	Reference
LEGISLATION	
Bribery Act 2010	2010 c. 23
Control of Asbestos at Work Regulations 2002	2002 No. 2675
Control of Pollution (Amendment) Act 1989	1989 c. 14
Control of Pollution Act 1974	1974 c. 40
Corporate Manslaughter and Corporate Homicide Act 2007	2007 c. 19
Data Protection Act 2018	2018 c. 12
Environmental Protection Act 1990	1990 c. 43
European Union (Future Relationship) Act 2020	2020 c. 29
Health & Safety at Work etc. Act 1974	1974 c. 37
Modern Slavery Act 2015	2015 c. 30
Pollution Prevention and Control Act 1999	1999 c. 24
The Confined Spaces Regulations 1997	1997 No. 1713
The Construction (Design and Management) Regulations 2015	2015 No. 51
The Control of Asbestos at Work (Amendment) Regulations 1992	1992 No. 3068
The Control of Asbestos at Work (Amendment) Regulations 1998	1998 No. 3235
The Control of Asbestos at Work Regulations 1987	1987 No. 2115
The Control of Asbestos in the Air Regulations 1990	1990 No. 556
The Control of Asbestos Regulations 2006	2006 No. 2739
The Control of Asbestos Regulations 2012	2012 No. 632
The Control of Lead at Work Regulations 1980	1980 No. 1248
The Control of Lead at Work Regulations 1998	1998 No. 543
The Control of Lead at Work Regulations 2002	2002 No. 2676
The Control of Noise at Work Regulations 2005	2005 No. 1643
The Control of Substances Hazardous to Health (Amendment) Regulations 2004	2004 No. 3386
The Control of Substances Hazardous to Health Regulations 2002	2002 No. 2677
The Environmental Noise, Site Waste Management Plans and Spreadable Fats etc. (Revocations and Amendments) Regulations 2013	2013 No. 2854
The Fire Precautions (Workplace) Regulations 1997	1997 No. 1840
The Hazardous Waste (England and Wales) (Amendment) Regulations 2009	2009 No. 507

Controlled Documents



Ref. / Title	Reference
LEGISLATION	
The Hazardous Waste (England and Wales) Regulations 2005	2005 No. 894
The Health and Safety (Consultation with Employees) Regulations 1996	1996 No. 1513
The Health and Safety (Display Screen Equipment) Regulations 1992	1992 No. 2792
The Health and Safety (First-Aid) Regulations 1981	1981 No. 917
The Health Protection (Coronavirus, Collection of Contact Details etc and Related Requirements) Regulations 2020	2020 No. 1005
The Health Protection (Coronavirus, International Travel) (England) Regulations 2020	2020 No. 568
The Health Protection (Coronavirus, Restrictions) (All Tiers) (England) Regulations 2020	2020 No. 1374
The Health Protection (Coronavirus, Restrictions) (England) (No. 3) Regulations 2020	2020 No. 750
The Health Protection (Coronavirus, Restrictions) (Local Authority Enforcement Powers and Amendment) (England) Regulations 2020	2020 No. 1375
The Health Protection (Coronavirus, Restrictions) (Self-Isolation) (England) Regulations 2020	2020 No. 1045
The Health Protection (Coronavirus, Wearing of Face Coverings in a Relevant Place) (England) Regulations 2020	2020 No. 791
The Lifting Operations and Lifting Equipment Regulations 1998	1998 No. 2307
The Manual Handling Operations Regulations 1992	1992 No. 2793
The Personal Protective Equipment (EC Directive) Regulations 1992	1992 No. 3139
The Personal Protective Equipment at Work Regulations 1992	1992 No. 2966
The Personal Protective Equipment Regulations 2002	2002 No. 1144
The Provision and Use of Work Equipment Regulations 1992	1992 No. 2932
The Provision and Use of Work Equipment Regulations 1998	1998 No. 2306
The Railways and Other Guided Transport Systems (Safety) Regulations 2006	2006 No. 599
The Regulatory Reform (Fire Safety) Order 2005	2005 No. 1541
The Reporting of Injuries, Diseases and Dangerous Occurrences Regulations 2013	2013 No. 1471
The Safety Representatives and Safety Committees Regulations 1977	1977 No. 500
The Waste Management (England and Wales) Regulations 2006	2006 No. 937
The Work in Compressed Air Regulations 1996	1996 No. 1656
The Workplace (Health, Safety and Welfare) Regulations 1992	1992 No. 3004
Transport and Works Act 1992	1992 c. 42
Water Resources Act 1991	1991 c. 57
Wildlife and Countryside (Amendment) Act 1991	1991 c. 39
Wildlife and Countryside Act 1981	1981 c. 69

Controlled Documents



Modular Rulebook GE/RT8000

PTS Only

In most cases only PTS handbook is required, unless one of the following applies:

1. Index, amendment module and Module G1 to be issued to the following;

*Supervisors and managers who issue publications
Staff who operate signal post replacement switches
Staff who place protection for Line Blockage or T3
Staff who secure points
Those who use tents on or near the line*

2. Index and amendment module to be issued to the following;

*Lookouts
People who take charge of cranes and equipment which could foul an open line
People who take charge of work on or near points
People who carry out patrolling/inspecting duties*

Other competencies (IWA, COSS, PC, ES, MC, CC)

Name & Issue	Issue Date	Title	Synopsis
GERT8000-Issue Iss 31.pdf	Sep 2020	Rule Book Module Issue History	This document contains updates to align with changes to Rule Book Module issues (GERT8000). This document has been updated to incorporate changes to modules published in September 2020.
GERT8000-Issue Iss 32	Mar 2021	Rule Book Module Issue History	This document contains updates to align with changes to Rule Book Module issues (GERT8000).
GERT8000-RBBL Iss 34.1	Dec 2020	Rule Book Briefing Leaflet	This Leaflet contains details of changes being published in the December 2020 Periodical Operating Notice. Each issue of the Rule Book Briefing Leaflet contains a summary of the changes being introduced to GERT8000.
GERT8000-RBBL Iss 35	Mar 2021	Rule Book Briefing Leaflet	This Leaflet contains details of changes to the Rule Book (GERT8000) being published in March 2021 and in-force June 2021.
GERT8000-Gloss Iss 5	Sep 2018	Glossary of Railway Terminology	The Glossary has been updated to reflect changes in terminology within TW5 which removes 'entering service' and replaces it with 'starting a journey'.
GERT8000-AC Iss 6.pdf	Sep 2020	AC electrified lines	You will need this module if you carry out the duties of a train driver, guard, shunter, designated person (DP), signaller, crossing keeper or person in charge of sidings in AC electrified areas. "Sections 12 and 13 have been revised in two main areas. The first is avoiding a need for a driver to leave the cab for inspection purposes, or circumstances in which a driver might be allowed to leave the cab for inspection purposes before the traction current has been removed. The second is managing the removal of traction current in a way that reduces the extent of reactionary delay. The changes are intended to reduce the electrical and non-electrical safety risk overall and to reduce the adverse operational impacts caused by stranded trains. A minor amendment has been made to Section 3.3 to recognise that not all frontline staff are able to speak directly to the ECO, in which case they should inform the signaller when reporting objects and defects. An incorrect reference to red bonds has also been revised in the same section.
GERT8000-DC Iss 4	Sep 2015	DC electrified lines	You will need this module if you carry out the duties of a train driver, guard, shunter, designated person (DP), signaller, crossing keeper and person in charge of sidings in DC

Controlled Documents



Name & Issue	Issue Date	Title	Synopsis
			electrified areas. This document has been updated as part of the December 2015 Rule Book Programme.
GERT8000-G1 Iss 7.1	Dec 2020	General safety responsibilities and personal track safety for non-track workers	You will need this module if you carry out the duties of a train driver, guard, shunter, designated person (DP), signaller, crossing keeper, or platform staff. — A new section 1.8 has been introduced that requires any unusual flows or pools of water that cause damage to be reported immediately to the signaller or Operations Control.
GERT8000-G1 Iss 8	Mar 2021	General safety responsibilities and personal track safety for non-track workers	You will need this module if you carry out the duties of a train driver, guard, shunter, designated person (DP), signaller, crossing keeper, or platform staff.
GERT8000-Issue HB Iss 12.pdf	Sep 2020	Rule Book Handbook Issue History	This document contains updates to align with changes to Rule Book Handbook issues (GERT8000). — This document has been updated to incorporate changes to handbooks published in September 2020.
GERT8000-Issue HB Iss 13	Mar 2021	Rule Book Handbook Issue History	This document contains updates to align with changes to Rule Book Handbook issues (GERT8000).
GERT8000-HB1 Iss 5.1	Dec 2020	General duties and track safety for track workers	This handbook is for those personnel who need to go on the operational railway to carry out their duties, with the exception of a train driver, guard, shunter, signaller, crossing keeper or designated person (DP). — A new section 7.5 has been introduced that requires any unusual flows or pools of water that cause damage to be reported immediately to the signaller or Operations Control.
GERT8000-HB1 Iss 6	Mar 2021	General duties and track safety for track workers	his handbook is for those personnel who need to go on the operational railway to carry out their duties, with the exception of a train driver, guard, shunter, signaller, crossing keeper or designated person (DP).
GERT8000-HB2 Iss 2	Sep 2015	Instructions for track workers who use emergency protection equipment	This handbook is for those personnel who need to go on the operational railway to carry out their duties and have been trained to carry out emergency protection. It does not apply to: train drivers, guards, shunters, signallers, crossing keepers and those who act as a designated person (DP). This document has been updated as part of the December 2015 Rule Book Programme.
GERT8000-HB3 Iss 3	Sep 2014	Duties of the lookout and site warden	This handbook is for those personnel who have duties of the lookout and site warden. Information on changes to this issue can be found in the Rule Book Briefing Leaflet (GERT8000-RBBL Iss 27).
GERT8000-HB4 Iss 2	Sep 2014	Duties of a points operator and route-setting agent - moving and securing points by hand	This handbook is for those personnel who has duties of a points operator and route-setting agent - moving and securing points by hand. Information on changes to this issue can be found in the Rule Book Briefing Leaflet (GERT8000-RBBL Iss 27).
GERT8000-HB5 Iss 2	Sep 2011	Handsignalling duties	This handbook is for those who carry out handsignalling duties.
GERT8000-HB6 Iss 6.pdf	Sep 2020	General duties of an individual working alone	This handbook is for those personnel with general duties of an individual working alone (IWA). New instructions have been added at section 2.5 to facilitate the introduction of the crossing the line procedure into the Rule Book. The changes are intended to streamline the procedure for crossing the line leading to reduced workload for signaller/SWL/COSS/IWA, reduced need for staff to be waiting unproductively trackside ,and crossing the line at locations that have already been assessed as suitable. Section 3.2 has been revised to facilitate the introduction of high output protection zones into the Rule Book. The introduction of high output protection zones into the Rule Book is intended to improve track worker safety by removing the need for possession support staff to go trackside to place

Controlled Documents



Name & Issue	Issue Date	Title	Synopsis
			standard possession protection, and to result in improved productivity on each occasion that a high output train is used.
GERT8000-HB7 Iss 7.pdf	Sep 2020	General duties of a controller of site safety (COSS)	This handbook is for those personnel who have the general duties of a controller of site safety (COSS).
GERT8000-HB8 Iss 7	Sep 2017	IWA, COSS or PC blocking a line	You will need this handbook if you carry out the duties of a IWA, COSS or PC blocking a line.
GERT8000-HB9 Iss 7	Sep 2019	IWA or COSS setting up safe systems of work within possessions	You will need this handbook if you carry out the duties of an IWA or COSS setting up safe systems of work within possessions.
GERT8000-HB10 Iss 4	Sep 2015	Duties of the COSS or SWL and person in charge when using a hand trolley	You will need this handbook if you are the COSS or SWL and person in charge when using a hand trolley. This document has been updated as part of the December 2015 Rule Book Programme.
GERT8000-HB11 Iss 8.pdf	Sep 2020	Duties of the person in charge of a possession (PICOP)	You will need this handbook if you carry out the duties of the PICOP. Section 4.2 has been revised to facilitate the introduction of the flexible train arrival point (FTAP) into the Rule Book. Section 12.1 has been revised to include arrangements for giving up a work site with an engineering train or on-track machine standing within it. The changes are intended to allow work to be undertaken for a greater proportion of the available time within a possession.
GERT8000-HB12 Iss 8.pdf	Sep 2020	Duties of the engineering supervisor (ES) or safe work leader (SWL) in a possession	You will need this handbook if you carry out the duties of the ES or SWL in a possession. Section 3.2 has been revised to facilitate the introduction of the flexible train arrival point (FTAP) into the Rule Book. Section 10.3 has been revised to include arrangements for giving up a work site with an engineering train or on-track machine standing within it. The changes are intended to allow work to be undertaken for a greater proportion of the available time within a possession. A new section 11 has been added to facilitate the introduction of high output protection zones into the Rule Book. The introduction of high output protection zones into the Rule Book is intended to improve track worker safety by removing the need for possession support staff to go trackside to place standard possession protection, and to result in improved productivity on each occasion that a high output train is used.
GERT8000-HB13 Iss 2	Sep 2014	Duties of the person in charge of the siding possession (PICOS)	You will need this handbook if you carry out the duties of a PICOS. Information on changes to this issue can be found in the Rule Book Briefing Leaflet (GERT8000-RBBL Iss 27)
GERT8000-HB14 Iss 2	Mar 2014	Duties of the person in charge of loading and unloading rail vehicles during engineering work	You will need this handbook if you carry out the duties of the person in charge of loading and unloading rail vehicles during engineering work.
GERT8000-HB14 Iss 3	Mar 2021	Duties of the person in charge of loading and unloading rail vehicles during engineering work	You will need this handbook if you carry out the duties of the person in charge of loading and unloading rail vehicles during engineering work.
GERT8000-HB15 Iss 5	Sep 2017	Duties of the machine controller (MC) and on-track plant operator	You will need this handbook if you carry out the duties of the machine controller (MC) and on-track plant operator. This document has been updated as part of the December 2015 Rule Book Programme.
GERT8000-HB16 Iss 4	Sep 2018	AC electrified lines	This handbook is for those personnel who need to go on the operational railway in an AC electrified area to carry out their duties.
GERT8000-HB17 Iss 3	Sep 2015	DC electrified lines	This handbook is for those personnel who need to go on the operational railway in a DC electrified area to carry out their duties. This document has been updated as part of the December 2015 Rule Book Programme.

Controlled Documents



Name & Issue	Issue Date	Title	Synopsis
GERT8000-HB18 Iss 4	Sep 2015	Duties of a Level Crossing Attendant	You will need this handbook if you carry out the duties of a level crossing attendant. This document has been updated as part of the December 2015 Rule Book Programme.
GERT8000-HB19 Iss 4.pdf	Sep 2020	Work on signalling equipment - duties of the signalling technician	You will need this handbook if you carry out the duties of a signalling technician. Section 1.5 has been revised to facilitate the introduction of high output protection zones into the Rule Book. The introduction of high output protection zones into the Rule Book is intended to improve track worker safety by removing the need for possession support staff to go trackside to place standard possession protection, and to result in improved productivity on each occasion that a high output train is used.
GERT8000-HB20 Iss 3.pdf	Sep 2020	General duties of a safe work leader (SWL) working outside a possession	You will need this handbook if you have the general duties of a safe work leader working outside a possession. New instructions have been added at section 2.3 to facilitate the introduction of the crossing the line procedure into the Rule Book. The changes are intended to streamline the procedure for crossing the line leading to reduced workload for signaller/SWL/COSS/IWA, reduced need for staff to be waiting unproductively trackside, and crossing the line at locations that have already been assessed as suitable.
GERT8000-HB21 Iss 4	Sep 2018	Safe work leader (SWL) blocking a line	You will need this handbook if you are a safe work leader (SWL) blocking a line.
GERT8000-OTM Iss 9.pdf	Sep 2020	Working of on-track machines (OTM)	You will need this module if you carry out the duties of a driver of an on-track machine, an operator of an on-track machine, or a signaller. — Sections 4.1 and 4.3 have been revised to facilitate the introduction of high output protection zones into the Rule Book. The introduction of high output protection zones into the Rule Book is intended to improve track worker safety by removing the need for possession support staff to go trackside to place standard possession protection, and to result in improved productivity on each occasion that a high output train is used.
GERT8000-OTM Iss 10	Mar 2021	Working of on-track machines (OTM)	You will need this module if you carry out the duties of a driver of an on-track machine, an operator of an on-track machine, or a signaller.
GERT8000-T10 Iss 4	Sep 2014	Duties of a designated person (DP) and people working on rail vehicles	You will need this module if you carry out the duties of a designated person and people working on a rail vehicle. Information on changes to this issue can be found in the Rule Book Briefing Leaflet (GERT8000-RBBL Iss 27).
GERT8000-T3 Iss 9.pdf	Sep 2020	Possession of a running line for engineering work	You will need this module if you carry out the duties of a driver or signaller. Sections 2.2 and 9.7 have been revised to facilitate the introduction of the flexible train arrival point (FTAP) into the Rule Book. Section 9.8 has been revised to include arrangements for giving up a work site with an engineering train or on-track machine standing within it. The changes are intended to allow work to be undertaken for a greater proportion of the available time within a possession. A new section 10 has been added to facilitate the introduction of high output protection zones into the Rule Book. The introduction of high output protection zones into the Rule Book is intended to improve track worker safety by removing the need for possession support staff to go trackside to place standard possession protection, and to result in improved productivity on each occasion that a high output train is used.

Network Rail Safety Central – Information Section

Code of Conduct

The Code of Conduct establishes some minimum standards that Network Rail expects in their supply chain. It has been developed by Network Rail's National Supply Chain, Industry bodies, and the Unions. It will be reviewed and updated by members of these same groups bi-annually. Please email queries to codeofconduct@networkrail.co.uk

[Code of Business Ethics](#) (web page)

[Modern Slavery](#) (web page)

Network Rail Safety Bulletins

In this section you'll find copies of the Network Rail safety bulletins regularly sent out to staff working on the Network Rail infrastructure. These cover a range of different safety issues and are often issued in response to a specific incident.

<https://safety.networkrail.co.uk/tools-resources/safety-bulletins/>

The following link contains a list of Network Rail Safety Bulletins : [Safety Bulletin List June 05](#)

You can refine your search by:

Bulletin type

- Archive - Lessons Learnt
- Archive - Safety Bulletins
- Safety Advice
- Safety Alert
- Safety Bulletin
- Shared Learning

There will also be an archive of past bulletins, so you can download any that you missed, or want to read again. **Please download them for the FULL TEXT OF THE BULLETINS.**

Safety Bulletins

- [Safety Bulletin NRB21-01 – Workforce near miss](#) January 13, 2021

Safety Advice

- [Safety Advice NRA21-04 – Staff accident maintaining HW 1000 points machine](#) February 24, 2021
- [Safety Advice NRA21-03 – Camera mast winch failure](#) February 19, 2021
- [Safety Advice NRA21-02 – Staff electric shock](#) February 2, 2021
- [Safety Advice NRA20-16 – Sheffield testing irregularity](#) December 23, 2020
- [Safety Advice NRA20-15 – Safe use of devices on or near the line](#) December 17, 2020
- [Safety Advice NRA20-14 – Safe isolations – access and competence](#) December 15, 2020
- [Safety Advice NRA20-13 – Fatality in welding machine](#) December 10, 2020

Other documents

- [Safety Alert NRX21-04 – Unsafe access into machinery](#) March 2, 2021
- [Safety Alert NRX21-03 – Supply of incorrect safety gloves](#) February 19, 2021
- [Safety Alert NRX21-01 – Surbiton workforce fatality](#) February 12, 2021

Lessons Learnt / Shared Learning

Network Rail are now producing 'Lessons Learnt' publications following events which have led to Formal investigations or local investigations where significant points of learning have resulted. Network Rail believes that these lessons will be of value for all involved in the industry and not just safety professionals, they are ultimately designed to aid prevention of events of a similar nature happening again elsewhere.

[Shared Learning](#)

Network Rail Safety Central



Health & Wellbeing

[Health and wellbeing](#) (web page)

Risk Management

[Think RISK](#) (web page)

Safety Films

<http://safety.networkrail.co.uk/Alerts-and-Campaign/Safety-Films>

In this section you will find all the safety films which are also listed in the relevant subject areas with supporting materials. Please note some of these films contain strong language and scenes which viewers might find upsetting. As such we recommend that these films are only viewed by people over the age of 16.

Have you got a good idea for a film? If you have, write into safety.central@networkrail.co.uk to let us know.

Resource Library

<https://safety.networkrail.co.uk/tools-resources/resource-library/>

The Resource Library holds a wealth of information.

SCO 24:7 (Supply Chain – Operations) Telephone

SCO 24:7 (formally the NSC247 and NDS24:7): call 01908 723500 or 085 65500 (internal)

SCO 24:7 operates 24 hours a day, 365 days of the year from the Quadrant in Milton Keynes. Our remit is to manage the real-time delivery of SCO products & services to our customers. This includes engineering haulage, materials, on track machines, infrastructure monitoring, seasonal treatment, HSEA reporting, site access services and lone worker monitoring.

Emergency

If there's a safety threat to you or to others such as:

- Animals, objects or people on or near the track
- Damage or fault at a level crossing
- A vehicle has hit a bridge
- A broken fence or open gate allowing access to the track

Please call Network Rail Emergency 24-hour helpline immediately: **03457 11 41 41**

To report a crime

Please contact the British Transport Police: **0800 40 50 40**, **999** or **Text 61016**

Coronavirus (COVID -19)

You will find many resources on this page: <https://safety.networkrail.co.uk/coronavirus-covid-19/>

Network Rail is working very closely with government, industry partners and health bodies to have the latest advice and messages available. In order to have the latest updates with this fast-changing situation we will be linking into.

[Network Rail' corporate website for industry information](#)

[COVID Guidance for BAME colleagues](#)

If you're feeling unwell, please follow public health advice immediately. More information is available on the [NHS website](#).

Please Note: Covid-19 mitigation Network Rail is continually reviewing our controls. As a result, we can confirm that the use of TVP's will not be subject to any additional restrictions beyond those required under the Network Rail TVP Standard NR/L2/OHS/020 and Sentinel Scheme Rules. However, it should be reminded that the use of TVP's should only be issued within accordance to the TVP standard.

01 May 2020 this short film on social distancing on work sites was produced. All information correct at time of publication [Watch Here](#)

Attachments

- [Sentinel Comp and Medical Extension Updat 230620](#) PDF / 23 Jun 2020
- [Information and Advice for Managers and BAME Colleagues During COVID-19 – Final 12052020](#) PDF / 27 May 2020
- [Masks and Face Shields in Stations \(Subs\)](#) MP4 / 19 May 2020
- [Safety-Advice-NRA20-03-Social-distancing](#) PDF / 18 May 2020
- [COVID-19 Masks & Face Shield Visors \(Subs\)](#) MP4 / 29 Apr 2020
- [COVID-19-working on site _print_ 3-04-2020_Final](#) PDF / 6 Apr 2020
- [COVID-19-working-at-operating-locations _print_ 3-4-2020_Final](#) PDF / 6 Apr 2020
- [COVID-19-working-at-operating-locations_3-4-2020_Final](#) PDF / 6 Apr 2020
- [COVID-19-working on site_3-4-2020_Final](#) PDF / 6 Apr 2020
- [NWR Vita Health Virtual Physiotherapy-1080p-b9ddde8a-c350-4610-ab60-5cc6c2ad0431](#) MP4 / 2 Apr 2020
- [Good practice guide for site working during Covid 19 V1](#) PDF / 31 Mar 2020
- [Guidelines on Social Distancing for Key workers Covid 19](#) PDF / 31 Mar 2020
- [Guidelines for working from home – social distancing and shielding the vulnerable Covid 19](#) PDF / 31 Mar 2020
- [DSE Guidance v2 MC Final3 COVID 19](#) PDF / 31 Mar 2020



Useful Links

The following pages contain other useful links and safety information from various sources which may be relevant to you.

Item	Details
<p>Health and Safety Executive http://www.hse.gov.uk – Website</p>	<p>Government agency responsible for regulating risks to health and safety arising from work. HSE publications can be downloaded free in Adobe PDF format.</p>
<p>CIRAS Online http://www.ciras.org.uk – free access</p>	<p>The Confidential Incident Reporting and Analysis System Freephone number 0800 4 101 101.</p>
<p>Network Rail http://www.networkrail.co.uk – Website</p>	<p>Owner and operator of Britain's railway infrastructure.</p>
<p>Network Rail Standards http://www.ihserc.com/ – subscription required</p> <p>Network Rail Standards Subscriptions IHS Global Ltd Phone: 01344 328000</p> <p>Network Rail Standards Management Publications Manager Nicole Lockwood Phone: 01908 782 481</p> <p>Network Rail Standards Hard Copy Document Centre IHS Retail Phone: 01344 328039 Fax: 01344 328005 or email: emeastore@ihs.com</p> <p>Network Rail Technical Drawings National Records Group Email: nrgcivils@networkrail.co.uk</p>	<p>All current Network Rail standards are available via the IHS website.</p> <p>You can access the new portal via the highlighted link but do be careful to claim your 100% discount when checking out!</p> <p><i>New standards portal</i> Last year we held focus groups with our SME suppliers to gain a stronger understanding of how we can make it easier for them to do business with us. Our SME Acton Plan, published in November 2019, responded to these insights with a range of measures to support our SME community. These actions included our commitment to review access to our standards and control documents. These are the requirements for the operation of the rail network and delivery of infrastructure maintenance and enhancements.</p> <p><i>I am pleased to announce that this has resulted in the launch of a new portal which will make our standards freely available to the supply chain. Instructions on how to register can be seen on the portal home page. Please do not hesitate to contact us with your feedback via SupplierCommunications@networkrail.co.uk.</i></p> <p><i>This initiative also supports our Open for Business programme which encourages our suppliers to submit challenges to our standards to reduce complexity and costs.</i> <i>If you do have any questions as a result of these changes, please contact your local Network Rail representative or email suppliercommunications@networkrail.co.uk</i></p>
<p>Network Rail Safety Central http://safety.networkrail.co.uk – free access</p>	<p>The site is your one-stop shop of safety information, advice, resources and useful contacts, designed to promote consistency and best practice across the whole rail industry. The information is divided under the following sections:</p> <ul style="list-style-type: none"> • Alerts & Campaign Material • Communication & Health • Commitment & Rules • Safety Groups • On Site Solutions • Toolbox
<p>RSSB Close Call System www.closecallsystem.co.uk – Register for access</p>	<p>At the request of Network Rail and its contractors, RSSB has developed a new internet-based system that will allow the industry to centrally record and analyse 'Close Call incidents'. This is known as the Close Call System.</p>
<p>Rail Safety and Standards Board http://www.rssb.co.uk – free access</p>	<p>RSSB builds industry-wide consensus and facilitates the resolution of difficult cross-industry issues. They provide knowledge, analysis, a substantial level of technical expertise, powerful information and risk management tools.</p>



Item	Details
<p>Railway Group Standards https://www.rssb.co.uk/standards-catalogue#all-documents – free access</p> <p>Rail Safety & Standards Board Enquiry Desk Phone: 020 3142 5400 Website www.rssb.co.uk</p>	<p>Purchasing Railway Group Standards A copy of the order form can be found in the forms section of the RGS Catalogue or from the RGSONLINE website stated above. You will need the following details in order to complete the form:</p> <ul style="list-style-type: none"> • Railway Group Standards code and title • Quantity • Price • Purchaser's full name, business, address and telephone number • Credit card details, cheque or purchase order number <p>Then fax or post it to Willsons Printers Limited at the address below.</p> <p>Please ensure that you include your credit card details, purchase order or a cheque made payable to Willsons Printers. Payments can also be made by BACS - please contact Willsons for company bank details. Orders received will be dispatched within five working days.</p> <p>Purchasing National Operations Publications National Operations Publications are Railway Group Standards which set out mandatory requirements for direct application in the workplace. These include:</p> <ul style="list-style-type: none"> • Modular Rule Book (GERT8000) • Working Manual for Rail Staff: Handling and Carriage of Dangerous Goods (GORM3053) • Working Manual for Rail Staff: Freight Train Operators (GORM3056) • Rule Book Forms <p>Details of these documents can be found in the sections 'Document Titles and Descriptions' for Traffic Operation and Management.</p> <p>As these documents are subject to frequent change, amendments which do not justify the reissue of the module or section of the working manual are published in GERT8001, Changes to National Operations Publications.</p> <p>Willsons Printers Limited supplies the modules and handbooks which make up the Modular Rule Book, Working Manual and Rule Book forms.</p> <p>You can order these documents by contacting Denise Atkinson at Willsons Printers Limited at the address below:</p> <p>Willsons Printers Limited Highlander House Cross Street, Newark Nottinghamshire, NG24 1PP Tel: 01636702334 Fax: 01636701396 http://www.willsonshop.com</p>
<p>M&EE Networking Group Codes of Practice https://www.rssb.co.uk/standards-catalogue#stakeholder-publications</p> <p>Refine results by selecting Lead Committee</p>	<p>The M&EE Networking Group is a non profit making group dedicated to the sharing of professional engineering and railway operations information and to provide a focus to the rail industry relating to operational and technical safety of plant. The group is a meeting of the professional heads of mechanical and electrical engineering and operations from infrastructure contractors, Network Rail, RSSB, the Rail Plant Association, London Underground and elected representatives from other infrastructure renewal companies, plant owners, and manufacturers/suppliers of plant and technical services.</p> <p>The M&EE Networking Group produces Codes of Practice and other documents as good practice for all members of the industry.</p>

Useful Links



Item	Details
Rail Sentinel https://www.railsentinel.co.uk/ – registered companies only	Sentinel Scheme Rules The latest copy of the scheme rules can be found here: Sentinel Scheme Rules
Office of Rail and Road http://orr.gov.uk/ – free access	Independent safety and economic regulator for Britain's railways, and monitor of performance and efficiency for England's Strategic Road Network.
Rail Accident Investigation Branch http://www.raib.gov.uk/ – free access	Independent railway accident investigation organisation for the UK. It investigates railway accidents and incidents on the UK's railways to improve safety, not to establish blame.

Other Safety Information



Other Bulletins

Track Safety Alliance

A few videos of interest at the Track Safety Alliance website:

<http://www.tracksafetyalliance.co.uk/videos/65/>

Southern Shield

Everyone Home Safe Every Day

Southern Shield is a collaborative safety forum that consists of Network Rail Infrastructure Projects Southern Region and its principal contractors. There are many more useful links on their website

<https://www.southernshield.co.uk/>

- Best Practice <https://www.southernshield.co.uk/best-practice/90/>
- Safety Messages <https://www.southernshield.co.uk/safety-messages/4/>
- Health & Wellbeing <https://www.southernshield.co.uk/health-and-wellbeing/82/>
- Library <https://www.southernshield.co.uk/library/3/>



WALES ROUTE - Maintenance SAFETY ALERT



AN SIGNIFICANT EVENT HAS TAKEN PLACE

Issued to: Network Rail line Managers & Safety professionals

Ref: WWM 20/003
Date of issue: 09/11/2020
Location: South Wales Mainline 167m 03ch
Contact: Keith Morey WHSEA Wales



Overview

On the 2nd November 2020 Whilst Clearing Vegetation with a chain saw in full PPE alongside the track near Rumney River Bridge on the SWM2, a member of staff, working for Network Rail Off Track, stood on a piece of plywood laying on the ground, that was covered in moss and vegetation.

The Plyboard was fully covering a Pile hole, which had been inserted then left, for the erection of the OLE masts. The hole had not been backfilled and was not identified on the ground or as a hazard on the paperwork. Since being left the ply has slowly rotted and vegetation has concealed its position.

The IP fell THROUGH the ply into the pile hole, managing to grab the side of the pile. Other gang members then rushed over and managed to pull them out from the hole. The IP was treated at the scene, having suffered cuts and scratches to his back, but this accident could have been far worse.

Upon investigation it has emerged that the Project has 112 pile holes that have been left to be capped. Work has started on a permanent solution and some now have temporary fences erected around the hazards.

A Safety "Chance to Learn" slideshow has also been prepared to explain the whole concern along with the permanent solution along with timescales and identified locations.

Discussion Points

- 1 – This person was lucky they didn't suffer serious injury – Take 5 to think about what could have happened and could that have been you?
- 2 – The OLE Project have suggested permanent covers but it will take time – How can you ensure this type of hazard is explained or briefed when planning or briefing access and egress?
- 3 – What else do you see and routinely walk past that may affect the health and safety of you your colleagues? By working and reporting hidden hazards we can all help ensure everyone goes home safe everyday

Part of Wales Route Maintenance group of Safety Posters





WALES ROUTE - Maintenance SAFETY BULLETIN



Injury at Gaer Junction Access Gate

Issued to: Network Rail line Managers & Safety professionals
 Ref: WWM 20/002
 Date of issue: 06/11/2020
 Location: Newport, South Wales
 Contact: Keith Morey WHSE Advisor



Overview

On the 26th October 2020 a track maintenance operative was trying to open a recently replaced access gate and caught their hand on the metalwork trying to pull back the locking bar to open

On closer inspection the gate locking bar has been ground down in order to make it fit into the gate post locator because the gate hasn't been fitted properly in the first place. It is not clear if this was done when the gate was originally fitted or if this was modified after, but either way grinding galvanised steel is quite a hazardous activity.

This is the second incident within a few months that involve recently fitted galvanised metal access gates. These gates are then resulting in injuries to our operatives using them for the intended purpose, because of bad workmanship, either at the time of installation or possibly later because someone has tried to modify without informing others. None of the gates were manufactured unsafely or delivered to Network Rail unsafely.

Discussion Points

- 1 – We all use access gates to access the Railway, who do you report a badly fitting gate or broken access gate to?
- 2 – How can we as a team improve access gates to make them safer for daily use? What could other Staff or Contractors do that would improve access and egress?
- 3 – What else do you see and routinely walk past that may affect the health and safety of you your colleagues? By working and reporting the things that look wrong we can all help ensure everyone goes home safe everyday

Part of Wales Route Maintenance group of Safety Posters

Safety Alert **Safety Bulletin** **Safety Advice** **Shared Learning**



OFFICIAL

Safety Bulletin

A serious incident has taken place



Fall from welfare cabin

Issued to:	Wales & Western
Ref:	WWB21/010
Date of issue:	14th December 2020
Location:	Fish Dock Compound, Bristol Temple Meads
Contact:	Helen Barnes- Western Works Delivery HSEA



Overview

On the 7th December at 08:20 a colleague working for Taziker Industrial on the Bristol Temple Meads roof refurbishment project, was using the welfare facilities at the Fish Dock compound, which was not officially opened as the previous compound was still in use during its demobilisation.

The injured person stepped out of the welfare cabin, which had a drop of approx. height of 300mm to the tarmac level below. The cabin door was open, and the operative's foot slipped on the tarmac and he fell over, dislocating his right ankle, and sustaining minor bruising to his left side ribs.

The investigation noted the tarmac stopped short by approximately 100mm to the front face of the cabin doorstep which created an additional 100mm drop and a sloping angle. This created a trip hazard if someone stepped down directly below the doorstep.

The tarmac activity had been completed on 5th December, but the steps into the cabin had not been installed at the time of the incident.

When interviewed the injured person noted that the pointing operatives had noticed that the step down from the cabins was high but did not report it or raise a Close Call at the time.

Discussion Points

The welfare had been permitted to be put into operation with insufficient access to the cabins. The step down was too high, and the tarmac not completed right up to the doorstep.

As an incomplete construction site, everyone should have been wearing steel toe cop boots, but the injured person was wearing Troiners, which could have contributed to his slip.

No one close called the stepping hazard, although the injured person and his team had noticed it prior to the accident.

Do you carry out safety checks at your site compounds and remove the hazards, close call them and help to prevent similar accidents?

Part of our group of Safety Bulletins

Safety Alert **Safety Bulletin** **Safety Advice** **Shared Learning**



OFFICIAL

Safety Bulletin

A serious incident has taken place



Manual Handling RIDDOR

Issued to:	Wales and Western
Ref:	WWB21/009
Date of issue:	10th December 2020
Location:	Southall West
Contact:	Lisa East, Health & Safety Manager, Capital Delivery



Overview

On 29th October an operative was undertaking cable watch duties at Southall West Loop Road Rail Access Point (RRAP) alongside a team (of three others) who were removing discarded troughing and placing it onto a pallet. A manual handling assessment was undertaken prior to the works commencing and was briefed out to the team.

Due to the odd number of people the operative volunteered to pair up with another member of the team and assist with the lifts. They had successfully completed the manoeuvre several times when the operative got their foot caught in a piece of troughing on the ground and subsequently fell sideways onto the pallet of troughing.

The operative was taken to hospital where they were diagnosed with a fractured rib.

Discussion Points

- Have you previously stepped in to help others, despite the potential risks? In hindsight what would you do differently?
- Consider the ways in which this accident could have been prevented?
- How often do you stop and 'Take 5' during a task to assess whether the hazards have changed?

Part of our group of Safety Bulletins

Safety Alert

Safety Bulletin

Safety Advice

Shared Learning



Maintenance Safety Bulletin



Operational Close Call at Cardiff East



View of Cardiff Panel recreated – the white lines show the EPRs applied

Issued to: Network Rail line managers & safety professionals
 Ref: WWM 20 - 005
 Date of issue: 15/12/2020

Location: Cardiff East Junction
 Contact: Keith Morey Wales WHSEA or Craig Fisher LOM - Wales

Overview

On 02 December, Cardiff S&T attended a fault in the early hours of the morning on 9459pts. They contacted the signaller and went through the line blockage arrangements to allow them to carry out the necessary work to rectify the fault. As part of this coll, the lines to be blocked, protection limits and additional protection were agreed.

Additional protection was agreed in the form of CF2562 – being maintained at danger and all points within the block to be locked normal. EPR application was agreed in the call to be applied as additional protection. During the block, the signaller became aware of a train that was required to run through platform 4, towards line E, which in turn would have meant clearing CF2562 towards line E (at this point maintained at danger as stated above).

The signaller cleared signal CF2562 towards line E without contacting the COSS* believing as it was routed away from the site of work and all points were locked normal, that this would be okay. During testing in relation to the failure, the COSS became aware of the move and questioned the signaller in his clearance of CF2562, believing incorrectly KZV would have had an EPR applied as part of the additional protection.

After much discussion regarding CF2562, the COSS continued with his work and the incident was not reported by either the signaller or COSS - it was found in safety critical communication monitoring.

*Rule clarification:

- The signaller and COSS/IWA/PC or SWL must agree where a route is to be cleared towards an unaffected line as part of the setting up arrangements. (GSR13.2.2 and HB 8 1.2)
- Notional Operating Instructions direct the signaller that EPR must be applied to all axle counter sections "within the line blockage limits where possible".

Discussion points

- Do you fully understand what routes, EPR application will cover when applied to your planned line blockage?
- Do you fully understand when additional protecting signals are required?
- When planning a line blockage have you considered your safe walking route?
- If you thought that something wasn't right how do you ensure it gets reported?



Part of the Wales and Borders route Maintenance group of safety posters

OFFICIAL

Shared Learning

Key learning following a serious incident

132kv Service Strike

Issued to:	Wales & Western
Ref:	WWL21/012
Date of issue:	15th December 2020
Location:	Gos Lane, Bristol
Contact:	Lesley Nidd, Health & Safety Manager



Overview

At approximately 11:10 hrs on 29th July 2020, a remote operated drilling rig struck a buried 132kv cable while undertaking ground investigations (Standard Penetration Test) Gos Lane in Bristol.

Nobody was injured during the incident although a loud bang and flash/fireball was observed. The fire was described to self-extinguish almost immediately.

Underlying Causes

The location of borehole being dug was moved several times during the planning stage of the project, but the risks associated with the final move from a third-party embankment onto a highway were not fully assessed and acted upon.

A ground penetrating radar survey of the road was not completed prior to the works as the change in location from embankment to highway was not communicated back to the buried service team who produced the permit to dig. Therefore, the permit to dig was not updated to reflect the change in location of borehole.

No permit to dig check list, as required by NR/L2/INI/CP1030, had been completed.

Buried service information supplied by Network Rail to the contractor were not specific, instead the information was contained in a 1200-page pack which covered the whole of the Bristol East Junction project

Buried service drawings on site were printed on A4 and not A3 as required by the service providers and the requirement to contact Western Power when working in the vicinity of 132kv cables was not done.

The process used to identify buried services on site did not follow the requirements HSE guidance or Network Rail standards (HS(G)47 and NR/L2/INI/CP1030)

There was an element of urgency of the works linked to a short programme in which to complete design works ahead of fixed possession dates.

Embedment checks by inspections of buried services and safe digging activities will take place to make sure the key messages are learned.

Key Messages:

- Hazard information provided in pre-construction information packs (PCIP) is essential to contractors to be able to assess risks. If this changes throughout the project, the key question is "how will the contractors be aware of hazards if there is a change"?

Other Safety Information



OFFICIAL

- Hazard information needs to be specific, if this is not known it is key that time is provided to contractors to establish what the hazards are and anyone who may need to help in controlling the hazard contacted.
- Buried service controls are in place to prevent this type of event from happening and must be followed.
- If there is an activity that requires a "permit to work" the permit must be valid for the day, location and arrangements of the activity – any changes should be challenged. Remember this needs to be the highest control of risk assessment and used as such.
- Information used for the permit to work needs to be read fully understood and therefore if there is a diagram to support this, it needs to be readable.

Part of our group of
Safety Bulletins





Shared Learning



Clear possession communications

Issued to: **Network Rail line managers, safety professionals and accredited contractors**

Ref: **NRL20-08**

Date of issue: **23/12/2020**

Location: **Down Polmont to Grahamston line, Scotland**

Contact: **Head of Workforce & Delivery Safety Scotland**



Overview

A freight train driver, travelling from Polmont to Carlisle North Yard, was authorised by the Engineering Supervisor (ES), responsible for movements within a worksite, to proceed to the Worksite Marker Board (WSMB), over a mile away, in readiness for departing the worksite. The WSMB was placed on the approach to the Protection Limit Board (PLB) and adjacent to detonator protection.

The possession protection arrangements were adequately communicated and the driver proceeded at a speed above the limit permitted for travelling within a worksite.

Consequently, the driver failed to stop at the WSMB, ran through the WSMB, the PLB and came to a stand approximately 20 metres beyond the published possession exit and protecting signal.

Communications between the possession staff, including the ES, and the driver were not recorded. Subsequent investigation determined that recognised protocols to facilitate understanding and confirmation of safety critical information were not robustly used by either the ES or the driver prior to the incident occurring.

Underlying causes

The ES and the driver failed to establish a clear understanding regarding the location of the WSMB.

The driver and the ES failed to agree an appropriate speed at which to proceed to the WSMB.

The driver failed to observe Rule Book requirements for operating within a possession and proceeded in excess of the permitted maximum speed when travelling within a worksite.

Key message

How are you complying with the requirements of NR/L3/MTC/MG017 regarding recording safety critical communications?

How are you complying with the requirements of NR/L2/OPS/033 standard regarding recording possession communications?

In the absence of recorded communications, how would you satisfy yourself that safety critical staff are observing appropriate communication protocols?

What will your next Safety Conversation be about?

Always observe current and future versions of:

GE/RT8000-HB12 – Duties of the Engineering Supervisor (ES) or Safe Work Leader (SWL) in a possession
GE/RT8000 – Possession of a running line for engineering work - Drivers Duties Part 9

In August 2015 a serious freight train collision in a possession at Logan was fortunate not to injure anyone but caused extensive network disruption. How are we continuing to learn the lessons of previous incidents?

Part of our group of Safety Bulletins





Southern Capital Delivery
Home Safe
 Southern Shield Weekly Safety Update



Manual handling and COVID restrictions

There has been an increase of incidents where handling assessments did not take into consideration the current COVID-19 restrictions. All manual handling assessments must consider the following principles: Load, Individual, Task and Environment.

The Manual Handling Operations Regulations require employers to:

- **Avoid** the need for hazardous manual handling, so far as is reasonably practicable;
- **Assess** the risk of injury from any hazardous manual handling that can't be avoided; and
- **Reduce** the risk of injury from hazardous manual handling, so far as is reasonably practicable.



- If manual handling tasks cannot be avoided, good practice must be followed when completing manual handling assessments:
- Consider the use of mechanical aids early - to maintain social distancing and avoid multiple people required for the task
 - Clearly communicate and coordinate prior to carrying out the task as face masks and shields can restrict clear speech and communication whilst carrying out the task
 - Review space and size of your site - the number of people in the workspace must be limited only to the number colleagues required for the task, make sure the number of people is sufficient to manage the load.

Do you always risk assess to eliminate or minimise manual handling hazards?

Are you wearing the correct PPE?



A [PPE guide](#) is available to download on the Southern Shield website showing the minimum requirements of PPE that must be worn for every task.

Wet weather and high winds forecast

Here are some simple tips to keep you safe during wet weather conditions and high winds:

- On site**
- Maintain and use authorised and well-lit walking routes. Short cuts can result in slips
 - Keep walkways clear and slip-free during snow and frost
 - Provide additional lighting for walkways, scaffolding and work sites
 - Keep absorbent mats around doorways to prevent internal floors from getting wet/muddy and regularly change them.

When high winds are forecast:

- Remove and store materials so that they cannot be blown around sites
- Fencing should be secured to a permanent structure so that it cannot move
- Remove signage, Monoflex, debris netting and acoustic barriers from fencing and scaffolding
- All Herras fencing should be double clipped
- Check that external doors have door-closers fitted to prevent doors slamming in high winds.
- Any planned lifting operations should be reviewed and where possible, rescheduled. Emergency lifting operations should only be undertaken with authorisation from the Site Manager.
- Keep up to date with the local weather conditions and warnings.

Contact us: shield@networkrail.co.uk or go to www.southernshield.co.uk



Safety Alert



Near Miss with Track Workers and Train (1P08)

Ref: EM/2021/01
 Date: 14 January 2021
 Location: Kettering, Northamptonshire
 Contact: Joe Rowberry, Head of Safety, Health & Environment [East Midlands]



Still taken from forward facing footage of 1P08

Overview

At 1021hrs on 13 January 2021, a near miss occurred involving 1P08 and a group of track maintenance workers at the north side of Kettering station.

The initial findings have shown that Lookout Operated Warning System (LOWS) was in use to provide warning to the group of staff who had planned to conduct track geometry correction.

Although there had been connection problems, the LOWS equipment appears to have been working as designed.

Discussion Points

How do we assure ourselves that work is planned in line with the planning hierarchy?

Do we know and understand what the emergency arrangements are?

The LOWS controller, responsible for monitoring the warnings sent to the work group, cleared a warning from the system prior to the approach of 1P08, giving the impression that it was safe to go back onto the line.

The work group saw 1P08 approaching and moved to a position of safety.

As 1P08 approached the group, a member of the group moved back towards the cess rail to retrieve an item of equipment, before once again moving to a position of safety.

Under what circumstances can track workers return to being on the line following a warning?

How do we ensure that safety concerns are listened to and acted upon?

Part of our group of Safety Bulletins



STOP Think! Moment – Injured Finger



What happened?

On 12/11/20 at approximately 09:55 on one of our Infrastructure sites, an operative working for our supplier lost his footing whilst lifting and carrying a kerb. The injured person and a colleague were in the process of installing kerb sections.

3 kerbs had been delivered to their work location using a kerb lifter. On closer inspection these kerbs appeared to be damaged. The injured person and his colleague made their way to where the kerbs were being stored to find more kerbs in better condition. The decision was made to manually move the kerb and carry it to their work location.

During the lift/carry the injured person lost his footing and fell forward, trapping the middle finger of his right hand under the kerb. He was given first aid and taken to hospital for treatment. It is not clear at this stage how or why the injured person lost their footing.

Impacts

- The injured person's finger was realigned and glued at hospital and has now returned home.
- Works were stood down whilst the investigation was undertaken, the methodology was reviewed, and the workforce briefed.

Whilst the investigation is on-going, please consider the following points when undertaking similar operations...

- ✓ Wherever possible use mechanical lifting aids to remove the need for manual handling.
- ✓ Ensure that materials are of good quality and in good condition prior to taking them to work locations.
- ✓ In all situations such as this, assess the risks involved when undertaking any manual handling using T.I.L.E. (Task, Individual, Load, Environment).
- ✓ If unsure of how to proceed, stop, think and consult your supervisor or SHE Advisor for guidance.



STOP Think!
Have a conversation!
Make the right choice the SAFE choice.

Alert No: 125
Last Updated: 12 November 2020



SIEMENS

Audience: Siemens Mobility Limited, Rail Infrastructure

FF/003/2021

Fast Facts Alert

Subject: RRV arm collision with signal post VC611 Signal during Victoria 3 Project Works

25.12.2020 – Damage to VC611 Signal Post.

A Rail & Road Vehicle (RRV) with two trailers was travelling on the Brighton down fast line with the front trailer loaded with civils materials.

The loaded RRV was travelling back to the RRAP between 2-5MPH under the supervision and control of the Crane Controller.

Due to the height of the load the arm of the RRV was positioned out of gauge. Tracking an RRV with the arm out gauge is an approved working method, providing that the route is planned such that the load will not collide with structures, and the Crane Controller precedes the machine and checks the route of travel is clear of obstructions, personnel etc. (It must be noted that its not best practice).

The RRV Operator was under the control of a Crane Controller who proceeded 20-30 meters ahead of the RRV in the 4ft.

Upon approaching Signal Post VC611 the Crane Controller failed to carry out a full visual check and instructed the RRV Operator to proceed with travel.

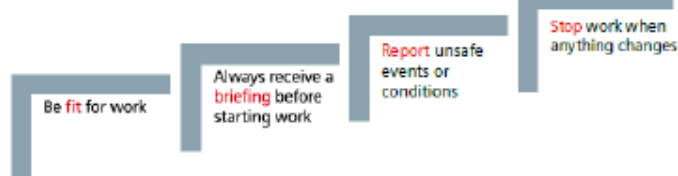
The RRV arm then collided with VC611 signal post causing the ladder to break from the base and signal post to lean forward. No injuries were sustained as a result of this incident occurring.

This incident is currently being investigated.



Discussion Points / Considerations

1. The high load could have been re-arranged to ensure that the RRV arm was positioned within gauge.
2. Are we fully anticipating the risks or uncertainties associated with our works?
3. Are we fully ensuring that contractors feel empowered to follow the Four Steps to Zero Harm which would include stopping work and notifying the SML Supervisor?



London & South East
Victoria 3 Project

Delivery Director - Steve Wright
Project Manager - Rob Watson
Author - Barry Kiely

for more information about this report please contact barry.Kiely@siemens.com

Produced By EHS Department
Siemens Mobility Limited, Rail Infrastructure
Any queries please contact your local EHS Specialist

Restricted © Siemens Mobility Limited 2020. All Rights Reserved.
Document is UNCONTROLLED when downloaded or printed.

UKI-RI-HS-TM-006
November 2020 Issue 4



SIEMENS

Audience: Siemens Mobility Limited, Rail Infrastructure

FF/008/2021

Fast Facts Alert

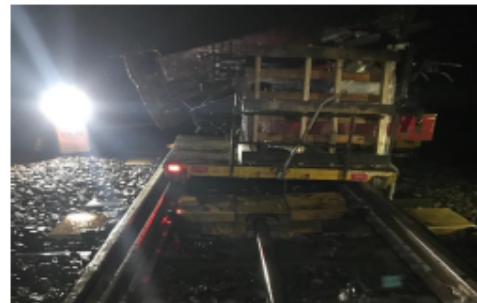
Subject: Trolley Disengagement at Points

At approximately 01.40 hours on Sunday 7 February 2021, a trolley being pushed towards 201A points (124m 3/4MP (LEC2) on the up slow, came into contact with the toes of the points. This resulted in the two right hand wheels becoming partially disengaged from the track.

- The team stopped work.
- Incident was reported to the Siemens Supervisor and Network Rail Engineering Supervisor.
- Replacement trolley was requested to remove GI.
- Points were clear and operational after the incident.
- No injuries were sustained.

These fast facts have been issued to create immediate awareness and discussion with teams to improve understanding of health and safety related matters.

The investigation is ongoing.



Discussion Points

1. Have you received an in person briefing with the Engineering Supervisor or Safe Work Leader 2 before starting work?
2. Do you have the right tools and equipment for the planned work?
3. Are you aware of what other work is planned and how could this impact on what you and your team are doing?
4. Can you look after your own safety and of others who could be hurt or harmed if you don't ?



Central Region
Rugeley to Colwich Grip 4

Chris Potts, Delivery Director
Chris Pearce, Project Manager
Louise Parton-Ginno, EHS Advisor

Add contact information
i.e. for more information about this report please contact Louise.Parton-Ginno@siemens.com

Produced By EHS Department
Siemens Mobility Limited, Rail Infrastructure
Any queries please contact your local EHS Specialist

Restricted © Siemens Mobility Limited 2020. All Rights Reserved.
Document is UNCONTROLLED when downloaded or printed.

UKI-RI-HS-TM-006
November 2020 Issue 4



SIEMENS

Audience: Siemens Mobility Limited, Rail Infrastructure

FF/007/2021

Fast Facts Alert

Subject: Victoria 3 COSS Accessed and Tested the Wrong Lines

What Happened?

On 3rd February 2021, SML planned for a civils team to undertake structural investigation works on the UP/DN Brighton Slow lines.

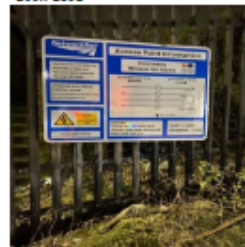
During Live Line Testing, the COSS testing unit indicated that the lines were live. The COSS contacted the ES and it became apparent that the COSS had accessed and tested the wrong lines.

SML immediately stood down all operatives.

There were no injuries sustained as a result of this incident.

This incident is under investigation.

Culvert Road Access Point to Brighton Lines that should have been used



Culvert Road Access Point to Kensington Lines that was used



Discussion Points / Considerations

1. Are Access Packs and Lineside Information Boards referred to at all times prior to accessing the operational railway?
2. Are we ensuring that we have local knowledge and familiarisation of our worksites?
3. Are we ensuring adequate on-site supervision is undertaken?
4. Are we following the Four Steps to Zero Harm and ensuring adequate briefings are undertaken?

Be fit for work

Always receive a briefing before starting work

Report unsafe events or conditions

Stop work when anything changes

Produced By EHS Department
Siemens Mobility Limited, Rail Infrastructure
Any queries please contact your local EHS Specialist

Restricted © Siemens Mobility Limited 2020. All Rights Reserved.
Document is UNCONTROLLED when downloaded or printed.

London & South East
Victoria 3 Project

Delivery Director - Steve Wright
Project Manager - Rob Watson
Author - Barry Kiely

for more information about this report please contact barry.kiely@siemens.com

UKI-RI-HS-TM-006
November 2020 Issue 4



SIEMENS

Audience: Siemens Mobility Limited, Rail Infrastructure

FF/006/2021

Fast Facts Alert

Subject: Slip on a Temporary Laminated Sign

On the 17th January 2021 at approx. 01:30 hrs an operative (IP) was undertaking duties as a banks man for a Tele-handler, which was due to load materials onto a trailer at the Freightliner Depot Road Rail Access Point (RRAP).

As the Tele-handler approached the Road Rail Vehicle trailer with the load, the IP moved into the 4 foot to safely observe the load being lowered onto the trailer. To maintain a safe distance the IP took a step backwards, in the process of doing so his left foot slipped from under him and the IP fell to the ground.

The IP moved to a position of safety (a nearby OLE Stanchion) where he took a seat to recover from the fall and noticed a laminated A4 sign was on the ground at the location he had slipped. The IP confirmed that he must have stepped / slipped on the laminated sign.

The laminated signs had been produced and attached to road cones with zip ties to remind the Freightliner Hyster operators to leave the RRAP clear as access was required on weekends. This sign had become detached.

The IP was taken to the hospital and was informed that he had injured the muscle in the upper left leg. The IP was prescribed painkillers to be taken if required and was told to rest for a period of 48 hours.

The IP returned to work on light administrative duties on Monday 18th January 2021.



Discussion Points

1. Is temporary signs secure, suitable and sufficient.
2. Is all temporary signage still in place.
3. Consider temporary works arrangements.
4. What could be done differently?

Manchester Region
Trafford Park Re-Signalling Project

Mark O'Leary - Delivery Director
Darren Carson - Project Manager
Steven Morrison - Author

for more information about this report please contact Morrison.steven@siemens.com



Produced By EHS Department
Siemens Mobility Limited, Rail Infrastructure
Any queries please contact your local EHS Specialist

Restricted © Siemens Mobility Limited 2020. All Rights Reserved.
Document is UNCONTROLLED when downloaded or printed.

UKI-RI-HS-TM-006
June 2020 Issue 3



HSEQ Flash Report week ending 20th November 2020

High Potential Near Miss – Plant & Operator procurement

A recent high potential near miss reported involving a JCB Hydradig machine has provided essential learning.

The near miss occurred when the operator was attempting to dislodge / remove the broken surface and mistakenly moved the machine attachment in the wrong direction, resulting in contact with the side of the excavation where an Operative had previously been standing.

The Operator on hire from our supply chain had the necessary minimum qualification to operate the BCS machine, however, he had not operated the Hydradig previously.



Learning Points

- Always make sure that the Operator is familiar with the model and operation of the machine even though they are able to present evidence of qualification/ticket/card for the type of machine
- Follow the correct procedure for the procurement of plant and Operators CPR328 - BCS - Equipment Hire Management Including Machine Operator Hire



- Initially monitor newly inducted Operator's familiarisation with the machine and feedback any concerns immediately to your Supervisor.
- Always remember, the controls can be different from one machine to another, hence Operator familiarisation is essential.
- Only authorised machines and Operators that have been approved through the correct process are to be used.

If you have any queries around the correct procedure and documentation required to procure a machine and/or operator please contact Danny Reilly Danny.Reilly1@bcsgroup.co.uk

Don't forget to send any front foot activity details that you and your team are currently undertaking to 3PillarFrontFootActions@barhale.co.uk

Safety | Communication | Quality | Integrity | TeamSpirit | Caring | Trust | Pride



INFORMATION

Safety Alert Safe Return to Work

4 January 2021

Background information

We saw some encouraging safety performance across our supply chain in 2020, despite the complications of Covid-19. As we enter into 2021 and many sites start back up, it's essential that we STOP AND THINK about the things that we rely on to keep us safe and well. We have provided some prompts here to help with this.

Many accidents occur as a result of a simple lapse in concentration; please take time to remind yourself of the main risks and controls needed. This may mean revisiting risk assessments, method statements, work instructions, and checking understanding with colleagues.

Spells away from the working environment can result in the body becoming less conditioned for the typical working day. Ensure that when returning to work, you consider the strain on your body, whether working in the office or out on sites.

Vehicles and site equipment will have had a break too! Check that they are free of defects before using them.

The Supply Chain Safety Leadership Group and the Safety Hub have published various Common Intent documents and Raising the Bar documents to aid in raising the standards of safety for our industry this year and can be found [here](#).

Lets make 2021 an even better year for our industry and make sure everyone gets Home Safe and Well.



Lessons Learnt

- Ask yourselves these questions
- Fit for Work – Are you fit for work both mentally and physically?
- COVID 19 – Follow all guidance
- Vehicle Checks – Check both your personal and any work vehicles for defects before use
- Review the ergonomics of your workstation
- Ensure that all PPE is in good clean working order, and worn correctly including lacing up your boots!
- Receive a briefing before starting work on site
- Report all unsafe events and conditions
- Stop work if anything changes
- Take regular breaks and take in hot food and drinks as necessary

If you have any queries about this safety alert information announcement or any other safety announcement then please contact Mark.Byard@highwaysengland.co.uk

HEi202



Other Safety Information



Safety 3-4-3 and Fleet 3-4-3

Safety 3-4-3 and Fleet 3-4-3 will be published and distributed at a later date.