

September 2019 ACS Rail Updates

Welcome to the **September** 2019 edition of ACS Rail updates. The following pages contain summaries of updates which may be relevant to you. Please brief and distribute this information to the relevant people as per your internal procedures.

The ACS Team

Content	Page
Changes to Network Rail Standards	2
Making sure you are aware of the relevant standards.....	2
New and Up-Issued Standards.....	3
Withdrawn, Closed and Superseded Documents.....	5
Emergency Changes (Previously Known as Letters of Instruction)	7
RSSB - Standards and the rail industry	9
Railway Group Standards (RGSSs).....	9
Rule Book (GE/RT8000)	9
GE/RM8000 Master Module Manual	9
Controlled Document List 07 September 2019	10
Network Rail Safety Central – Information Section	21
Code of Conduct	21
Safety Bulletins as of 9 th September 2019	21
Lessons Learnt / Shared Learning.....	21
Health & Wellbeing.....	21
Risk Management	21
Safety Films	22
Resource Library.....	22
SCO 24:7 (Supply Chain – Operations) Telephone	22
Emergency.....	22
To report a crime.....	22
Useful Links	23
Other Bulletins	27
Planning and Delivering Safe Work	27
Working at Height.....	27
Track Safety Alliance.....	27
Southern Shield.....	27
Safety 3-4-3 and Fleet 3-4-3	42

BRIEFING REQUIREMENTS:

NOTE: Contractors are responsible for arranging and undertaking and recording their own Safety and Awareness Briefings in accordance with their own processes and procedures.



Changes to Network Rail Standards

Issue 113: 07th September 2019 – 06th December 2019

Making sure you are aware of the relevant standards

Every employee has a duty to comply with any mandatory Network Rail company standards and procedures relevant to their role. It is vital therefore that all employees are aware of which standards are relevant to their area of work, and where to find them. Network Rail Standards can be accessed via:

- For users internal to Network Rail: Network Rail Standards pages on Connect
- For users external to Network Rail: all enquiries should be directed to IHS Customer Care on 01344 328 300 or email customer.support@ihs.com

Other Information

Network Rail Standards Subscriptions

IHS Global Ltd
Phone: 01344 328000

Network Rail Standards & Controls Publications Manager

Neil Whitaker
Phone: 01908 782564

Network Rail Standards Hard Copy Document Centre

IHS Retail
Phone: 01344 328039
Fax: 01344 328005 or email: emeastore@ihs.com

Railway Group Standards

Rail Safety & Standards Board Enquiry Desk
Phone: 020 3142 5400 Website www.rssb.co.uk

Network Rail Technical Drawings

National Records Group
Email: nrgcivils@networkrail.co.uk

You must make sure that the team and the activities for which you are responsible comply with the Network Rail company standards and procedures.

By doing this, you will be complying with the Network Rail Health & Safety Management System and relevant legislation.

The following pages contain summary extracts of the changes / new issue to the Network Rail Company Standards which may be relevant to you.

Standards Updates

New and Up-Issued Standards Issue 113 - 07 Sep 2019

References	Title	Replaces
NR/GN/RMVP/27078 Issue 4	Routine Inspection and Maintenance of Diesel and Electrically Driven Air Compressor Installations	NR/L3/ELP/27078 Issue 3
NR/GN/RMVP/27235 Issue 2	Guidance for the Specification, Design and Maintenance of Hydraulic Fluid Power Systems	NR/SP/ELP/27234 Issue 1 NR/GN/ELP/27235 Issue 1
NR/GN/SIG/50013 Issue 2	Methodology for the Demonstration of Compatibility with Route Relay and Solid State Interlockings	RT/E/C/50013 Issue 1
NR/GN/TRK/065 Issue 2	NR 60 Mark 2 Standardised S&C – Assembly and Maintenance	NR/GN/TRK/065 Issue 1
NR/GN/TRK/7001 Issue 16	Index of Track Work Information Sheets (TWI)	NR/GN/TRK/7001 Issue 15
NR/GN/XNG/30048 Issue 1	Index of Level Crossings Bowties	New at Issue 113
NR/L1/OPS/010 Issue 13	Signals Passed at Danger (SPAD) and Signal Reversions Affecting Trains	NR/L1/OPS/010 Issue 12
NR/L1/RSK/001 Issue 3	Network Rail Risk Policy	NR/L1/RSK/001 Issue 2
NR/L2/ELP/27314 Issue 2	Construction Assurance for Overhead Contact Systems	NR/L2/ELP/27314 Issue 1
NR/L2/OPS/015 Issue 2	Working of Passenger Trains Over Non-Passenger Lines	NR/L2/OPS/015 Issue 1
NR/L2/OPS/031 Issue 10	Assessing and Assuring the Impact of Operational Risks Relating to Changes to the Train Plan	NR/L2/OPS/031 Issue 9
NR/L2/OTK/5201 Issue 3	Lineside Vegetation Management Manual	NR/L2/OTK/5201 Issue 2
NR/L2/RMVP/0001 Issue 4	Acquisition of Railbound Vehicles and On Track Plant	NR/L2/RMVP/0001 Issue 3
NR/L2/RMVP/0002 Issue 3	Operation and Use of Railbound Vehicles and On Track Plant	NR/L2/RMVP/0002 Issue 2
NR/L2/RMVP/0003 Issue 2	Assurance, Performance & Monitoring of Railbound Vehicles and On Track Plant	NR/L2/RVE/0003 Issue 1
NR/L2/RMVP/0090 Issue 4	Management of Maintenance and Change for Railbound Vehicles and On Track Plant	NR/L2/RMVP/0090 Issue 3
NR/L2/RMVP/1332 Issue 5	Wheelsets and Axle Bearing Manual	NR/L2/RMVP/1332 Issue 4
NR/L2/RMVP/27178 Issue 3	Examination of Pressure Vessels	NR/L2/RMVP/27178 Issue 2
NR/L2/RSK/001 Issue 3	Enterprise Risk Management	NR/L2/RSK/001 Issue 2
NR/L2/SCO/306 Issue 4	Disposal of Redundant Assets	NR/L2/SCO/306 Issue 3
NR/L2/SIG/19820 Issue 4	Signalling and Level Crossing Product Specifications	NR/L2/SIG/19820 Issue 3
NR/L2/SIG/30009 Issue 17	Signalling Principles Handbook	NR/L2/SIG/30009 Issue 16
NR/L2/SIG/30035 Issue 4	Signalling and Level Crossing Scheme Approval Process	NR/L2/SIG/30035 Issue 3 NR/L2/SIG/30003 Issue 1
NR/L2/TRK/001 Issue 13	Inspection and Maintenance of Permanent Way	NR/L2/TRK/001 Issue 12
NR/L2/TRK/036 Issue 3	Gauge Compatibility Certification and Gauging Delegated Authority	NR/L2/TRK/036 Issue 2
NR/L2/TRK/053 Issue 8	Inspection and Repair to Control the Risk of Derailment at Switches	NR/L2/TRK/053 Issue 7
NR/L2/TRK/9020 Issue 1	Structural Expansion Joints - Design, Installation and Maintenance	New at Issue 113
NR/L3/CIV/006 Issue 9	Structures, Tunnels and Operational Property Examinations	NR/L3/CIV/006 Issue 8
NR/L3/CIV/028 Issue 6	Reporting of Structures and Operational Property Safety Related Events	NR/L3/CIV/028 Issue 5
NR/L3/CIV/187 Issue 1	Coastal and Estuarine Asset Management Plans	RT/CE/S/089 Issue 1
NR/L3/ELP/25000 Issue 1	Electrical Safety Measures for Working on the Operational Railway with Overhead Electrification (Trial Areas Only)	New at Issue 113
NR/L3/ELP/27051 Issue 6	Working Instructions for DC Electrified Lines in the Liverpool Area	NR/L3/ELP/27051 Issue 5
NR/L3/ELP/3091 Issue 5	DC Conductor Rail Electrified Lines Working Instructions	NR/L3/ELP/3091 Issue 4
NR/L3/INI/CP0074/F0030 Issue 27	PAN (Project Advice Note) Register	NR/L3/INI/CP0074/F0030 Issue 26

Standards Updates



References	Title	Replaces
NR/L3/MTC/RCS0216 Issue 15	Risk Control Manual	NR/L3/MTC/RCS0216 Issue 15
NR/L3/OPS/021 Issue 2	Weather Management Manual Index	NR/L3/OPS/021 Issue 1
NR/L3/OPS/045 Issue 8	National Operating Procedures Index	NR/L3/OPS/045 Issue 7
NR/L3/OPS/251 Issue 3	Unmanned Aircraft System (Drone / UAS) Operations	NR/L3/OPS/251 Issue 2
NR/L3/SCO/306 Issue 1	Route Services – Disposal of Redundant Assets	New at Issue 113
NR/L3/SCO/313 Issue 7	On-Track Machines (OTMs) Driver and Operations Standards Manual	NR/L3/SCO/313 Issue 6
NR/L3/TEL/30170 Issue 2	Maintenance of Public Address Voice Alarm (PAVA) Equipment	NR/L3/TEL/30170 Issue 1
NR/L3/TRK/003 Issue 31	Index of Track Engineering Forms	NR/L3/TRK/003 Issue 30
NR/L3/TRK/3406 Issue 4	Design, Installation and Maintenance of Modular Bearer Joints	NR/L3/TRK/3406 Issue 3

Withdrawn, Closed and Superseded Documents

References	Title	Replaced by/Status
NR/GN/CTM/401 Issue 1	Mentoring & Learning Support	Withdrawn
NR/GN/CTM/402 Issue 1	Verification Protocol for Assessment in The Line (AiTL)	Withdrawn
NR/GN/ELP/27040 Issue 2	Overhead Electrified Lines – Passage of High Vehicles or Loads, or Those With Large Overhangs, over Accommodation and Occupation Level Crossings	Withdrawn
NR/GN/ELP/27041 Issue 2	Winching Overhead Line Conductors	Withdrawn
NR/GN/ELP/27235 Issue 1	Guidance for the Design, Specification and Maintenance of Hydraulic Systems	NR/GN/RMVP/27235 Issue 2
NR/GN/TRK/065 Issue 1	NR 60 Mark 2 Standardised S&C – Assembly and Maintenance	NR/GN/TRK/065 Issue 2
NR/GN/TRK/7001 Issue 15	Index of Track Work Information Sheets (TWI)	NR/GN/TRK/7001 Issue 16
NR/L1/OPS/010 Issue 12	Signals Passed at Danger and Signal Reversions	NR/L1/OPS/010 Issue 13
NR/L1/RSK/001 Issue 2	Network Rail Risk Policy	NR/L1/RSK/001 Issue 3
NR/L2/CIV/072 Issue 1	Wind Loading of Overhead Line Equipment and Structures	NR/L2/CIV/072 Issue 2
NR/L2/CIV/171 Issue 1	Examinations, Inspections and Assessments of Buildings & Architecture Assets: Structures and Fabric	NR/L2/CIV/171 Issue 2
NR/L2/ELP/27314 Issue 1	Testing and Commissioning of New or Modified Overhead Contact Systems	NR/L2/ELP/27314 Issue 2
NR/L2/ENV/050 Issue 1	Standard for Environmental Performance Indicators	Withdrawn
NR/L2/INI/PG114 Issue 3	Implementation of the Network Rail Project Control Cycle	Withdrawn
NR/L2/OCS/031 Issue 9	Risk Assessment and Briefing of Timetable Change	NR/L2/OPS/031 Issue 10
NR/L2/OPS/015 Issue 1	Working of Passenger Trains Over Non-Passenger Lines	NR/L2/OPS/015 Issue 2
NR/L2/OTK/5201 Issue 2	Lineside Vegetation Management Manual	NR/L2/OTK/5201 Issue 3
NR/L2/RMVP/0001 Issue 3	Design, Acquisition and Engineering Change for Rail Vehicles and On-track Plant	NR/L2/RMVP/0001 Issue 4
NR/L2/RMVP/0002 Issue 1	Operation and Use of Rail Vehicles and On-track Plant	NR/L2/RMVP/0002 Issue 3
NR/L2/RMVP/0090 Issue 3	Management of Maintenance for Traction and Rolling Stock, On Track Machines and On Track Plant	NR/L2/RMVP/0090 Issue 4
NR/L2/RMVP/1332 Issue 4	Wheelset and Axle Bearing Manual	NR/L2/RMVP/1332 Issue 5
NR/L2/RSK/001 Issue 2	Enterprise Risk Management	NR/L2/RSK/001 Issue 3
NR/L2/RVE/0003 Issue 1	Assurance, Performance and Monitoring of Rail Vehicles	NR/L2/RMVP/0003 Issue 2
NR/L2/SCO/306 Issue 3	Disposal of Redundant Assets	NR/L2/SCO/306 Issue 4
NR/L2/SIG/19820 Issue 3	Signalling Product Specifications	NR/L2/SIG/19820 Issue 4
NR/L2/SIG/30003 Issue 1	Engineering Assurance Arrangements for Signalling Engineering Schemes and Services	NR/L2/SIG/30035 Issue 4
NR/L2/SIG/30009 Issue 17	Signalling Principles Handbook	NR/L2/SIG/30009 Issue 16
NR/L2/SIG/30035 Issue 3	Signalling Scheme Plan Technical Approval Process	NR/L2/SIG/30035 Issue 4
NR/L2/TRK/001 Issue 12	Inspection and Maintenance of Permanent Way	NR/L2/TRK/001 Issue 13
NR/L2/TRK/036 Issue 2	Gauge Capability Certification (formerly RT/CE/S/036)	NR/L2/TRK/036 Issue 3
NR/L2/TRK/053 Issue 7	Inspection and Repair to Control the Risk of Derailment at Switches	NR/L2/TRK/053 Issue 8
NR/L3/CIV/006 Issue 8	Handbook for the Examination of Structures	NR/L3/CIV/006 Issue 9
NR/L3/CIV/028 Issue 5	The Management of Reports of Safety-Related Events on Civil Engineering Infrastructure	NR/L3/CIV/028 Issue 5
NR/L3/CTM/132 Issue 1	Awarding Body	Withdrawn
NR/L3/ELP/27051 Issue 5	Working Instructions for DC Electrified Lines in the Liverpool Area	NR/L3/ELP/27051 Issue 6
NR/L3/ELP/27078 Issue 3	Routine Inspection and Maintenance of Diesel and Electrically Driven Compressed air Installations	NR/GN/RMVP/27078 Issue 4
NR/L3/ELP/3091 Issue 4	DC Electrified Lines Working Instructions	NR/L3/ELP/3091 Issue 5
NR/L3/INI/CP0047/F0030 Issue 26	PAN (Project Advice Note) Register	NR/L3/INI/CP0047/F0030 Issue 27
NR/L3/INI/PG115 Issue 5	Planning and Programme Controls Standard	Withdrawn
NR/L3/MTC/RCS0216 Issue 14	Risk Control Manual	NR/L3/MTC/RCS0216 Issue 15

Standards Updates

References	Title	Replaced by/Status
NR/L3/OPS/021 Issue 1	Weather Management Manual Index	NR/L3/OPS/021 Issue 2
NR/L3/OPS/045 Issue 7	National Operating Procedures Index	NR/L3/OPS/045 Issue 8
NR/L3/OPS/251 Issue 2	Unmanned Aircraft System (Drone/UAV) Operations - Managing the Operational Risk	NR/L3/OPS/251 Issue 3
NR/L3/SCO/313 Issue 6	On-Track Machines (OTMs) Driver and Operations Standards Manual	NR/L3/SCO/313 Issue 7
NR/L3/TEL/30170 Issue 1	Work Instruction for the Maintenance of Public Address Voice Alarm (PAVA) Equipment	NR/L3/TEL/30170 Issue 1
NR/L3/TRK/003 Issue 30	Index of Track Engineering Forms	NR/L3/TRK/003 Issue 30
NR/L3/TRK/3406 Issue 4	Design, Installation and Maintenance of Modular Bearer Joints	NR/L3/TRK/3406 Issue 3
NR/PS/ELP/27184 Issue 2	25kV Rotating Post Type Isolators	Withdrawn
NR/SP/ELP/27178 Issue 2	Examination of Pressure Vessels	NR/L2/RMVP/27178 Issue 3
NR/SP/ELP/27200 Issue 2	Track Datum Markers on all Overhead Electrified Lines	Withdrawn
NR/SP/ELP/27234 Issue 1	Specification for Design and Maintenance of Hydraulic Fluid Power Systems	NR/GN/RMVP/27235 Issue 2
NR/SP/ENV/001 Issue 1	Corporate Environment Manual	Withdrawn
RT/CE/S/089 Issue 1	Management of Existing Coastal, Estuarine and River Defences	NR/L3/CIV/187 Issue 1
RT/E/C/27003 Issue 2	Identification of Component Failures in 25kV Overhead Line Equipment	Withdrawn
RT/E/C/50013 Issue 1	Methodology for the Demonstration of Compatibility with Interlockings	NR/GN/SIG/50013 Issue 2
RT/LS/P/007 Issue 2	Project Management and the Environment	Withdrawn

Emergency Changes (Previously Known as Letters of Instruction)

To access any active Emergency Change you need to refer to its associated Network Rail Standard. The front page of the standard will provide details of the relevant change. When using the online service there will be an active link to each relevant change.

Historic changes (where text has been crossed out) will be removed next publication. Please note, some changes may stay current after the stated Expiry Date

Reference	Title	Issue	Date
NR/BS/LI/426	Standard/control document affected: NR/L1/CIV/032 (Issue 2), The Management of Structures	1	26/07/2019
NR/BS/LI/425	Standard/control document affected: NR/L2/ELP/27325 Train Borne Monitoring of Traction Power Contact Systems	1	10/05/2019
NR/BS/LI/424	Standard/control document affected: NR/SP/SIG/19812 (issue 1), Cross Track Cable Management	1	18/04/2019
NR/BS/LI/423	Standard/control documents affected: NR/L2/TRK/001/mod07 [Issue: 8] Management of rail defects	1	11/03/2019
NR/BS/LI/422	Standard/control documents affected: NR/L3/TRK/055/U15 (Issue 1), [Ultrasonic testing of rail using the Sperry roller search unit rail testing system including identification & sizing of 37o suspects reported by the UTU]	1	11/03/2019
NR/BS/LI/421	Standard/control document affected: NR/L2/TRK/053 (Issue 7), Inspection and Repair Procedures to Reduce the Risk of Derailment at Switches. SUPERSEDED BY NR/L2/TRK/053. HISTORIC ON 07 DECEMBER 2019	1	20/03/2019
NR/BS/LI/420	Standard/control document affected: NR/SP/ELP/21060 (Issue 2), Issue of Safety Documentation for Work on 650/750 V dc Apparatus	1	29/04/2019
NR/BS/LI/419	Standard/control document affected: NR/L3/ELP/29987 [Working On or About 25 kV a.c. Electrified Lines] (Issue 5)	1	13/02/2019
NR/BS/LI/416	Standard/control document affected: NR/L2/CTM/018 Issue 2, Competency & Training in Traction Power Distribution	1	05/02/2019
NR/BS/LI/415	Standard/control document affected: NR/L3/TEL/30170 (Issue 1) Work Instruction for the maintenance of public address voice alarm (PAVA) equipment. SUPERSEDED BY NR/L3/TEL/30170. HISTORIC ON 07 DECEMBER 2019	1	10/12/2018
NR/BS/LI/413	Standard/control document affected: NR/L2/OHS/022 Issue 1, Working Safely at Height.	1	04/01/2019
NR/BS/LI/410	Standard affected: NR/L2/ELP/27229 (Issue 2), Specification for remote control equipment for electrical distribution systems	1	14/12/2018
NR/BS/LI/397	Standard/control document affected: NR/SP/CTM/016 Issue 1, Competency & Training in Fixed Plant Engineering	1	20/04/2018
NR/BS/LI/389	Standard affected: NR/L2/SIG/30009 (Issue 11). Signalling Principles Handbook	1	13/02/2017
NR/BS/LI/387	Standard/control document affected: NR/L3/ELP/21067 (Issue 5), Instructions for making out, issuing and cancelling high voltage Permits to Work, Sanctions for Test and Circuit State Certificates	1	26/07/2017
NR/BS/LI/383	Standard affected: NR/L2/CTM/021 (Issue 4). Competence and Training	2	08/12/2016
NR/BS/LI/371	Standard affected: NR/L2/CIV/162 (Issue 2). Platform Extensions. Location of metal structures on Third Rail area Station Platforms	1	02/03/2016
NR/BS/LI/365	Standard affected: NR/L3/TRK/4004 (Issue 2). Switch and Crossing Assemblies	2	16/06/2016
NR/BS/LI/348	Requirements for undertaking the roles of Lead Examiner and Examining Engineer for the examination of Tunnels. Standards affected: NR/L3/CIV/006 Part 4A Issue 1, NR/L3/CIV/006 Part 4B Issue 1 and NR/L3/CIV/006 Part 1D Issue 1. SUPERSEDED BY NR/L3/CIV/006 – HISTORIC ON 1 APRIL 2021	1	23/02/2015
NR/BS/LI/347	Standard affected: NR/L2/CTM/028 (Issue 2). Competence and Training	1	16/01/2015
NR/BS/LI/342	Standard affected: NR/SP/ELP/21028 (Issue 3). Specification for ancillary wiring of electrical distribution equipment on A.C. and D.C. electrified lines	1	13/04/2016
NR/BS/LI/340	Standards affected: NR/L3/TRK/4004 (Issue 2). Switch and crossing assemblies	1	07/01/2015
NR/BS/LI/331	Requirements for parapet heights on over bridge and footbridge structures spanning overhead line electrification equipment	2	07/08/2015
NR/BS/LI/328	Standard affected: NR/SP/ELP/21104 (ISSUE 2). Design and Installation of Electric Track Equipment for DC Electrified Lines	1	28/03/2014

Standards Updates

Reference	Title	Issue	Date
NR/BS/LI/326	Standard affected: NR/L2/OHS/050 (Issue 4), Sentinel Scheme Rules	1	16/04/2014
NR/BS/LI/306	Standard affected: NR/L1/CIV/032: The Management of Structures [Issue 2]	2	26/09/2014
NR/BS/LI/305	Standards Affected: NR/L2/TRK/001 Issue 6. NR/L2/TRK/2102 Issue 6. NR/L2/TRK/3038 Issue 5. NR/L2/TRK/0032 Issue 5. NR/L2/TRK/0132 Issue 6. NR/L3/TRK/3510/A01 Issue 1. NR/L3/TRK/3510/B01 Issue 1. NR/L3/TRK/1015 Issue 2	2	31/01/2014
NR/BS/LI/292	NR/L3/TRK/1010 (Issue 2). Management of responses to extreme weather conditions at structures. earthworks and other key locations	1	18/07/2013
NR/BS/LI/283	Standard affected: NR/L3/TRK/4004 (Issue 2). Switch and Crossing Assemblies	2	14/09/2015
NR/BS/LI/284	Standard affected: NR/SP/ELP/21060 (Issue 2). Issue of Safety Documentation for Work on 650/750 V dc Apparatus SUPERSEDED BY NR/BS/LI/420 – HISTORIC ON 29 APRIL 2019	1	24/01/2013
NR/BS/LI/256	Standard affected: NR/SP/ELP/27243 (Issue 1). Specification for Signalling Power Supplies	2	24/10/2016
NR/BS/LI/217	Standards affected: NR/SP/ELP/27224 [Issue: 2] Specification for the installation of cable routes forming part of the traction distribution system	4	25/01/2016
NR/BS/LI/193	Standards affected: NR/L3/CIV/006 Part 11A: Reporting and recording examinations of Structures in CARRS [Issue 2] SUPERSEDED BY NR/L3/CIV/006 – HISTORIC ON 1 APRIL 2020	2	03/09/2014
NR/BS/LI/163	Standard affected: RT/CE/S/130 (Issue 1). Flash-Welded Rails: Site Welded Strings	2	01/10/2010
NR/BS/LI/154	Use Of The Geismar THR542 Lightweight Stressing Equipment In Tandem. Standard affected: NR/L2/TRK/3011 (Issue 6)	1	18/01/2010
NR/BS/LI/106	Electric Points Heating - standard affected NR/L2/ELP/40045	2	01/09/2011
NR/BS/LI/101	Standard affected: RT/CE/S/077 Storage. Installation & Testing of TSR & ESR AWS	1	08/09/2008
NR/BS/LI/097	Standard affected NR/WI/ELP/27052 Work Instructions for DC electrified lines in the Northern city line	1	04/06/2008
NR/BS/LI/091	Use of CEMBRE Rail Web Connection Systems on DC Conductor Rail - standard affected NR/GN/ELP/27020	1	27/05/2008
NR/BS/LI/084	Project D686: Western Territory 650 V Cable Renewals	1	18/04/2008
NR/BS/LI/072	STL Auxiliary Transformer Failures at Traction Substations or Switching Stations	4	19/10/2007
NR/BS/LI/061	Dangerous Incident Notification: 11kV indoor switchgear type YSF6 manufactured by Yorkshire Switchgear	1	23/11/2006
NR/BS/LI/060	Traction electrical distribution sites with compromised earthing due to theft of cables - affected standard NR/SP/ ELP/21032	1	23/11/2006
NR/BS/LI/056	Permal Bushings: Access Restrictions	1	11/09/2006
NR/BS/LI/047 - E&P	Bimold Connections on Rectifier Transformers at DC Traction Substations	1	05/05/2006
NR/BS/LI/040	650 V D.C. Traction Power Cables - Support Systems - affected standard NR/SP/ELP/27224	1	20/12/2005
NR/BS/LI/032	Labelling of Track Isolating Switches (T.I.S)	1	17/10/2005
NR/BS/LI/028	Segregation of D.C. Track Feed Cables	1	22/08/2005
NR/BS/LI/025	Paralleling of EDFE Supply Points New Cross - Croydon. Wimbledon. Northfleet: Restrictions	3	07/01/2008

RSSB - Standards and the rail industry

Access all current (and many withdrawn) Railway Group Standards, Rail Industry Approved Codes of Practice (RACOPs), Guidance Notes (GNs) and Rail Industry Standards (RISs).

<http://www.rssb.co.uk/railway-group-standards>

Useful links:

- [Catalogues](#)
- [Document structure and type categories](#)
- [Railway Group Standards Help Manual](#)
- [Rule Book module matrix](#)

Railway Group Standards (RGSs)

Mandatory requirements for the GB mainline railway system are defined in Railway Group Standards (RGSs). They facilitate the management and operation of the mainline railway as a shared system. RGSs set out technical requirements applicable to vehicles or the infrastructure, or processes applicable to transport operators.

<http://www.rssb.co.uk/railway-group-standards>

Rule Book (GE/RT8000)

The Rule Book (GE/RT8000) and other National Operations Publications are documents that contain direct instructions for railway staff.

The Rule Book is held in printed copy by over 100,000 people, and as such is probably the best known and most widely distributed in the entire RSSB catalogue. Even greater numbers of people are known to use it as a reference and information document both from the United Kingdom and abroad using the online version.

You can still order hard copies of individual standards and Rule Book modules or handbooks from Willsons External link (Tel: 01636 702334) or download them from the Railway Group Standards section of this site.

Rule Book Briefing Leaflet

[GERT8000-RBBL Iss 32.1](#) Issued: 01/06/2019 In Force: 01/06/2019
[GERT8000-RBBL Iss 33](#) Issued: 07/09/2019 In Force: 07/12/2019

GE/RM8000 Master Module Manual

RSSB has produced this manual to provide end-users with access to the content of GE/RT8000 (The Rule Book) that is relevant to all roles as defined in the Rule Book Matrix published by RSSB.

[GERM8000-master-module Iss 6](#) Issued: 07/09/2019 In Force: 07/12/2019 Withdrawn: 07/12/2019
[GERM8000-master-module Iss 7.pdf](#) Issued: 07/09/2019 In Force: 07/12/2019



Controlled Document List 07 September 2019

Ref. / Title	Issue No	Issue Date
RAIL MANAGEMENT SYSTEM		
Rail Management System		

Ref. / Title	Issue No	Issue Date
GROUP STANDARDS - http://www.rssb.co.uk/railway-group-standards		
Modular Rulebook GE/RT8000/ (See separate page for listed modules and issue dates)	-----	-----
GERM8000-master-module Master Module Manual	6	09/2018
GERM8000-master-module Master Module Manual	7	09/2019
GERM8000 Track Workers Manual	5	09/2018
GERM8000 Track Workers Manual	6	09/2019
GERM8000 Possession Workers Manual	3	09/2017
GERM8000 Possession Workers Manual	4	09/2019
GLRT1210 AC Energy Subsystem and Interfaces to Rolling Stock Subsystem	1	12/2014
GLRT1212 DC Conductor Rail Energy Subsystem and Interfaces to Rolling Stock Subsystem	1	09/2015
GOGN3655 Guidance on Medical Fitness for Railway Safety Critical Workers	2	06/2014
RIS-1530-PLT Rail Industry Standard for Technical Requirements for On-Track Plant and their Associated Equipment and Trolleys	6	12/2015
RIS-2750-RST Supplier Assurance	1	12/2017
RIS-3118-TOM Incident Response Planning & Management	1	12/2016
RIS-3119-TOM Accident and Incident Investigation	2.2	03/2019
RIS-3279-TOM High Visibility Clothing	2	09/2019
RIS-3279-TOM High Visibility Clothing	4	12/2016
RIS-3350-TOM Communication of Urgent Operating Advice	1	12/2016
RIS-3701-TOM Confidential Reporting System for Rail Staff	2	09/2019
RIS-3701-TOM Rail Industry Standard for a Confidential Reporting System for Rail Staff	4	06/2010
RIS-8046-TOM Spoken Safety Critical Communications	2	12/2016
RIS-8046-TOM Spoken Safety Critical Communications	4	12/2016
RIS-8047-TOM Reporting of Safety Related Information	2	03/2018
RIS-8070-TOM Testing Railway Safety Critical Workers for Drugs and Alcohol	1	12/2016

Ref. / Title	Issue No	Issue Date
LONDON UNDERGROUND (LU) STANDARDS		
LUL G1163 Stations DLO - Failure Reporting Analysis & Corrective Action System (FRACAS)	A2	11/2015
LUL G1164 Making a Referral to the Drug and Alcohol Advisory and Treatment Service	A2	04/2014
LUL G1234 Incident recording, investigation and reporting	A4	04/2017
LUL G1241 Alcohol and Drugs at Work Guidelines and Information For Managers	6	07/2009
LUL G1242 Alcohol and Drugs at Work – Managers For Cause and Post Incident Check List	A3	02/2014
LUL G1249 Environmental Incident Categories	A5	07/2018
LUL G557 Electronic Incident Reporting Form (eIRF)	A5	03/2014
LUL LF29 Incident investigation & reporting or recording What you need to remember	01	n/a

Controlled Documents



Ref. / Title	Issue No	Issue Date
LONDON UNDERGROUND (LU) STANDARDS		
LUL R0350 Guidance and advice for the use of personal protective equipment	A1	01/2014
LUL R0403 Personal Protective Equipment (PPE) catalogue	1.1	01/2014
LUL S1251 Alcohol and Work; includes Written Notice 12/24/2014, 6/16/2015	A2	11/2011
LUL S1257 Drugs and Work; Includes Written Notice 01317: 12/24/2014	A2	11/2011
LUL S1552 Contract QUENSH Conditions	A18	11/2016
LUL S1601 Management Arrangements to Assure Medical Fitness	A5	01/2012
LUL TE-HBS-0017 Managing competence and training	A1 Cat 3	02/1995

Ref. / Title	Issue No	Issue Date
NETWORK RAIL STANDARDS		
NR/CAT/STP/001 Catalogue of Network Rail Standards	113	09/2019
PTS Handbook RT 3170	09	06/2013
NR/L2/AMG/1030 Working Safely in the Vicinity of Buried Services	1	12/2008
NR/GN/CIV/208 Ground Investigation	1	12/2018
NR/L2/CIV/003 Engineering and Architectural Assurance of Building and Civil Engineering Works	5	12/2018
NR/L2/CIV/035 Management of Structures	2	06/2019
NR/L3/CIV/040 Work Instruction for the use of Protective Coating Systems	2	06/2019
NR/L2/CIV/086 Management of Earthworks	9	03/2019
NR/L2/CIV/295 Scour Assessment of Bridges, Culverts and Retaining Walls	2	09/2018
NR/L3/CIV/006 Handbook for the Examination of Structures	9	09/2019
NR/L3/CIV/006 Handbook for the Examination of Structures	8	06/2017
NR/L3/CIV/170 Assessment of Tunnels	1	03/2019
NR/L3/CIV/185 Management of Reports of Safety Related Geotechnical Incidents	1	09/2017
NR/L3/CIV/190 Developing Extreme Weather Plans	1	12/2017
NR/GN/CPR/401 Guidance on Contractual Health and Safety Requirements	1	12/2008
NR/L2/CPR/201 Supplier Qualification	2	12/2011
NR/L2/CPR/302 Supplier Qualification - Core Requirements (For PCL / POL Holders)	2	09/2011
NR/L2/CSG/STP001 Standards and Controls Management Manual	7	03/2018
NR/CS/CTM/001 Competence Management	1	12/2006
NR/GN/CTM/401 Mentoring & Learning Support	4	03/2010
NR/L2/CTM/017 Competence and Training in Civil Engineering	1	06/2006
NR/L2/CTM/021 Competence & Training in Track Safety	4	12/2010
NR/L2/CTM/201 Competence Management	2	03/2012
NR/L2/CTM/202 Quality Assurance in Training & Assessment	2	12/2011
NR/L2/CTM/207 Competence & Training in Planning	2	06/2012
NR/L2/CTM/209 Competence & Training in Safe System of Work Planner	1	12/2010
NR/L2/CTM/220 Competence & Training in Portable, Transportable & Mobile Plant Operation	1	06/2012

Controlled Documents



Ref. / Title	Issue No	Issue Date
NETWORK RAIL STANDARDS		
NR/L2/CTM/223 Competence & Training in Managing Site Safety	1	06/2011
NR/L2/ELP/21087 Risk Based Maintenance for Overhead Line Assets	8	09/2018
NR/L2/ELP/21088 General maintenance parameters for 25 kV overhead line electrification equipment	3	12/2015
NR/L2/ELP/27009 Overhead Line Equipment Campaign Changes	3	03/2017
NR/L2/ELP/27307 Management of M&EE Safety Related Event Reports	4	12/2017
NR/L2/ELP/27402 Specification for protection and control devices for electrical systems	1	12/2009
NR/L2/ELP/27715 Overhead Contact System Design Specification	3	09/2018
NR/L3/ELP/27051 Working Instructions for d.c. Electrified Lines in the Liverpool Area	6	09/2019
NR/L3/ELP/27051 Working Instructions for d.c. Electrified Lines in the Liverpool Area	5	12/2017
NR/L3/ELP/27115 Arrangements for Isolation of the Conductor Rail for Pre-Planned Possessions of the Line	4	09/2018
NR/L3/ELP/27140 Application of Short Circuits for Conductor Rail Isolations	4	03/2019
NR/L3/ELP/27237 Overhead Line Work Instructions	16	09/2018
NR/L3/ELP/3091 DC Electrified Lines Working Instructions	5	09/2019
NR/L3/ELP/3091 DC Electrified Lines Working Instructions	4	09/2018
NR/SP/ELP/29987 Working on or About 25 KV AC Electrified Lines	5	12/2018
NR/L2/ENV/015 Environment and Social Minimum Requirements for Projects – Design and Construction * Issue 7 was published June 2018, then withdrawn and Issue 6 reinstated.	8	03/2019
NR/L2/ENV/115 Environment and Social Management System Requirements	1	03/2018
NR/L2/INF/02203 Controlled Publications - Issue & Receipt	2	12/2011
NR/L3/INF/02204 Controlled Publications - Process & Accountabilities	3	12/2011
NR/L3/INF/02226 Corporate Records Retention Schedule	3	12/2017
NR/GN/INI/001 Guidance on the Management of Door to Door Work & Travel Time	1	12/2008
NR/L2/INI/CP0070 Principal Contractor Licensing Scheme	5	06/2017
NR/L2/INI/P3M/101 Business Process - Governance of Railway Investment Projects (GRIP) - for Projects	5	09/2017
NR/L2/INI/P3M/104 Network Rail Requirements (formerly NR/L1/INI/CP0095)	2	09/2017
NR/L3/INI/CP0028 Contract Requirements - Quality	3	06/2012
NR/L3/INI/CP0036 Provision of Welfare Facilities	4	08/2008
NR/L3/INI/CP0064 Delivering Work Within Possessions	5	06/2017
NR/L2/INV/002 Accident and Incident Reporting and Investigation	13	12/2011
NR/L3/INV/3001 Reporting and Investigation Manual	5	06/2016
NR/L2/MTC/089 Arrangements for the Exchange of Asset Data and the Continuing Maintenance of Assets Undergoing Change	2	12/2018
NR/L3/MTC/EN0100 Waste Management	3	06/2012
NR/L3/MTC/EN0101 Management of Discharges to Sewers & Controlled Waters	3	06/2012

Controlled Documents



Ref. / Title	Issue No	Issue Date
NETWORK RAIL STANDARDS		
NR/L3/MTC/EN0225 Environ Management System for Infrastructure Maintenance	1	06/2012
NR/L3/MTC/EP0152 Working on or Adjacent to Conductor Rail	5	12/2011
NR/L3/MTC/MG0173 Monitoring of Spoken Safety Communications	3	06/2019
NR/L3/MTC/MG0210 Management of Maintenance Work within a Worksite to Prevent a Possession Overrun	3	06/2019
NR/L3/MTC/MG0213 Index of Standard Maintenance Forms	13	06/2019
NR/L3/MTC/RCS0216 Risk Control Manual	15	09/2019
NR/L3/MTC/RCS0216 Risk Control Manual	14	06/2019
NR/L3/MTC/RCS0216/OLE02 Risk Control Manual: Working on Red Bonds/Impedance Bonds	2	03/2012
NR/L3/MTC/SE0115 Confined Spaces Working & Entry Procedure	2	06/2008
NR/L3/MTC/SE0117 Planned Assurance Inspections and Site Surveillance	4	09/2018
NR/CS/OHS/002 Policy on Working Safely	1	02/2007
NR/L1/OHS/051 Drugs and Alcohol	6	12/2015
NR/L1/OHS/052 Traumatic Incident Management	1	06/2016
NR/L1/OHS/053 Assessing Risk of Stress in the Workplace	1	06/2016
NR/L2/OHS/00110 First Aid at Work	6	09/2017
NR/L2/OHS/00112 Worksafe Procedure	2	12/2009
NR/L2/OHS/00120 Testing for Drugs and Alcohol	5	12/2015
NR/L2/OHS/00124 Competence Specific Medical Fitness Requirements and Occupational Health Provider Requirements for Medical Assessments	3	12/2016
NR/L2/OHS/003 Fatigue Risk	8	06/2019
NR/L2/OHS/0044 Planning and Managing Construction Work replaces NR/L3/INI/CP0044 Work Package Planning	5	12/2016
NR/L2/OHS/0047 Managing Health and Safety in Construction (Application of the Construction (Design and Management) Regulations to Network Rail)	7	06/2019
NR/L2/OHS/005 High Street Environment & Conditions for Work outside Network Rail Managed Infrastructure	7	09/2010
NR/L2/OHS/019 Safety of People working on or near the Line	9	03/2017
NR/L2/OHS/020 Track Visitor Permits	5	08/2008
NR/L2/OHS/021 Personal Protective Equipment and Work Wear	3	06/2009
NR/L2/OHS/022 Working Safely at Height	1	09/2010
NR/L2/OHS/050 Sentinel Scheme Rules	4	03/2011
NR/L2/OHS/157 Health surveillance for silica and asbestos and the management of diagnosed occupational respiratory conditions	1	03/2017
NR/L3/OHS/0046 The Reporting, Investigation and Recording of Safety and Sustainable Development Events and Close Calls within Infrastructure Projects	3	06/2018
NR/L3/OHS/019-IP Planning and Delivering Safe Work – Implementation Principles for Infrastructure Projects	1	06/2018
NR/L3/OHS/133 Planning and Delivering Safe Work Using Proscient in the East Midlands	1	06/2017
NR/L2/OPS/033 Recording Spoken Safety Critical Communications between Possession Management and Engineering Trains / On-Track Plant Drivers when Working in Possessions and Worksites.	3	06/2019
NR/L3/OPS/084 Line Clear Arrangements Following Engineering Works in Axle Counter Areas – Line Clear Verification Process (formerly NR/L3/OCS/084)	4	09/2018

Controlled Documents



Ref. / Title	Issue No	Issue Date
NETWORK RAIL STANDARDS		
NR/L3/OPS/251 Unmanned Aircraft System (Drone/UAS) Operations	3	09/2019
NR/L3/OPS/251 Unmanned Aircraft System (Drone/UAS) Operations	2	03/2019
NR/GN/OTK/5000 Issue 1 Index of Off-Track Drawings	1	06/2019
NR/L2/OTK/5201 Lineside Vegetation Management Manual	3	09/2019
NR/L2/OTK/5201 Lineside Vegetation Management Manual	2	03/2019
NR/GN/RMVP/0200 Infrastructure Plant Manual Guidance	1	12/2018
NR/L2/RMVP/0200 Infrastructure Plant Manual	10	12/2018
NR/L3/RMVP/0201 Calibration Work Instruction Manual Replaces NR/L3/MTC/ME0201 This standard provides the index and version control of Calibration Work Instructions for the internal calibration and comparison checking of Inspection, Measuring and Test Equipment (IMTE).	2	09/2011
NR/L2/RSE/070 Engineering Verification	2	12/2011
NR/L2/RSE/100 Network Rail Acceptance Panel processes	5	06/2019
NR/L1/RSK/001 Network Rail Risk Policy	3	09/2019
NR/L1/RSK/001 Network Rail Risk Policy	2	03/2018
NR/L3/SCO/313 On-Track Machines (OTMs) Driver and Operations Standards Manual	7	09/2019
NR/L3/SCO/313 On-Track Machines (OTMs) Driver and Operations Standards Manual	6	06/2019
NR/L3/SCO/314 Engineering Assurance for T&RS, OTM and OTP Projects	1	12/2018
NR/SIN/185 Identification and Inspection of Plain-Lined S&C	1	06/2019
NR/L2/SIG/11201 Signalling Design Handbook	11	06/2018
NR/L2/SIG/14201 Signalling Risk Assessment Handbook	4	03/2019
NR/L2/SIG/30009 Signalling Principles Handbook	17	09/2019
NR/L2/SIG/30009 Signalling Principles Handbook	16	03/2019
NR/L2/SIG/30014 Signalling Works Testing Handbook	14	06/2019
NR/L3/SIG/10064 General Instructions to Staff Working on S&T Equipment	8	06/2019
NR/L3/SIG/10661 Signal Maintenance Task Intervals	18	06/2019
NR/L3/SIG/10663 Signal Maintenance Specifications	10	06/2019
NR/L3/SIG/11231 Signal Maintenance Testing Handbook	13	06/2019
NR/L3/SIG/MG0110 Imposition & Removal of Temporary Speed Restrictions	3	06/2012
NR/L2/SIGELP/50000 Safe working and maintenance on or near Signalling Power Distribution Equipment above 175 volts	3	03/2017
NR/L3/SIGELP/50001 Signalling Power Distribution Equipment above 175 Volts	3	03/2017
NR/L3/SIGELP/50002 Safe Working Practices When Working on or Near Signalling Power Distribution Equipment Above 175 Volts	1	12/2016
NR/L3/SIGELP/50003 Safe Working Practices When Working on or Near Signalling Equipment	1	03/2018
NR/L2/TEL/30067 The Transmission of Safety Related Information	2	12/2011

Controlled Documents



Ref. / Title	Issue No	Issue Date
NETWORK RAIL STANDARDS		
NR/L2/TEL/30156 Functional Requirements for Safety Related Communications Equipment for On Track Plant Working	1	12/2011
NR/GN/TRK/7001 Index of Track Work Information Sheets (TWI)	16	09/2019
NR/GN/TRK/7001 Index of Track Work Information Sheets (TWI)	15	09/2018
NR/L2/TRK/001 Inspection and Maintenance of Permanent Way	13	09/2019
NR/L2/TRK/001 Inspection and Maintenance of Permanent Way	12	09/2018
NR/L3/TRK/003 Index of Track Engineering Forms	31	09/2019
NR/L3/TRK/003 Index of Track Engineering Forms	30	06/2019
NR/L3/TRK/3530 Track Lubricants	1	06/2012
NR/L3/TRK/7006 Creation and Application of Initial ESR Design	1	03/2019

Controlled Documents



Ref. / Title	Reference
OTHER STANDARDS & GUIDANCE	
BS EN ISO 14001:2015	2015
BS EN ISO 9001:2015	2015
BS EN ISO 45001:2018	2018
BS OHSAS 18001:2007	2007
Investigating Accidents and Incidents – HS(G)245	ISBN 9780717628278
Management of Health and Safety at Work Regulations 1999 Approved Code of Practice and guidance	ISBN 9780717624881
Managing health and safety in construction Construction (Design and Management) Regulations 2015. Guidance on Regulations	ISBN 9780717666263
Successful Health and Safety Management – HS(G)65	ISBN 9780717612765

Ref. / Title	Reference
LEGISLATION	
Bribery Act 2010	2010 c. 23
Control of Asbestos at Work Regulations 2002	2002 No. 2675
Control of Pollution (Amendment) Act 1989	1989 c. 14
Control of Pollution Act 1974	1974 c. 40
Corporate Manslaughter and Corporate Homicide Act 2007	2007 c. 19
Data Protection Act 2018	2018 c. 12
Environmental Protection Act 1990	1990 c. 43
Health & Safety at Work etc. Act 1974	1974 c. 37
Modern Slavery Act 2015	2015 c. 30
Pollution Prevention and Control Act 1999	1999 c. 24
The Confined Spaces Regulations 1997	1997 No. 1713
The Construction (Design and Management) Regulations 2015	2015 No. 51
The Control of Asbestos at Work (Amendment) Regulations 1992	1992 No. 3068
The Control of Asbestos at Work (Amendment) Regulations 1998	1998 No. 3235
The Control of Asbestos at Work Regulations 1987	1987 No. 2115
The Control of Asbestos in the Air Regulations 1990	1990 No. 556
The Control of Asbestos Regulations 2006	2006 No. 2739
The Control of Asbestos Regulations 2012	2012 No. 632
The Control of Lead at Work Regulations 1980	1980 No. 1248
The Control of Lead at Work Regulations 1998	1998 No. 543
The Control of Lead at Work Regulations 2002	2002 No. 2676
The Control of Noise at Work Regulations 2005	2005 No. 1643
The Control of Substances Hazardous to Health (Amendment) Regulations 2004	2004 No. 3386
The Control of Substances Hazardous to Health Regulations 2002	2002 No. 2677
The Environmental Noise, Site Waste Management Plans and Spreadable Fats etc. (Revocations and Amendments) Regulations 2013	2013 No. 2854

Controlled Documents



Ref. / Title	Reference
LEGISLATION	
The Fire Precautions (Workplace) Regulations 1997	1997 No. 1840
The Hazardous Waste (England and Wales) (Amendment) Regulations 2009	2009 No. 507
The Hazardous Waste (England and Wales) Regulations 2005	2005 No. 894
The Health and Safety (Consultation with Employees) Regulations 1996	1996 No. 1513
The Health and Safety (Display Screen Equipment) Regulations 1992	1992 No. 2792
The Health and Safety (First-Aid) Regulations 1981	1981 No. 917
The Lifting Operations and Lifting Equipment Regulations 1998	1998 No. 2307
The Manual Handling Operations Regulations 1992	1992 No. 2793
The Personal Protective Equipment (EC Directive) Regulations 1992	1992 No. 3139
The Personal Protective Equipment at Work Regulations 1992	1992 No. 2966
The Personal Protective Equipment Regulations 2002	2002 No. 1144
The Provision and Use of Work Equipment Regulations 1992	1992 No. 2932
The Provision and Use of Work Equipment Regulations 1998	1998 No. 2306
The Railways and Other Guided Transport Systems (Safety) Regulations 2006	2006 No. 599
The Regulatory Reform (Fire Safety) Order 2005	2005 No. 1541
The Reporting of Injuries, Diseases and Dangerous Occurrences Regulations 2013	2013 No. 1471
The Safety Representatives and Safety Committees Regulations 1977	1977 No. 500
The Waste Management (England and Wales) Regulations 2006	2006 No. 937
The Workplace (Health, Safety and Welfare) Regulations 1992	1992 No. 3004
Transport and Works Act 1992	1992 c. 42
Water Resources Act 1991	1991 c. 57
Wildlife and Countryside (Amendment) Act 1991	1991 c. 39
Wildlife and Countryside Act 1981	1981 c. 69

Controlled Documents



Modular Rulebook GE/RT8000

PTS Only

In most cases only PTS handbook is required, unless one of the following applies:

1. Index, amendment module and Module *G1* to be issued to the following;

Supervisors and managers who issue publications
Staff who operate signal post replacement switches
Staff who place protection for Line Blockage or T3
Staff who secure points
Those who use tents on or near the line

2. Index and amendment module to be issued to the following;

Lookouts
People who take charge of cranes and equipment which could foul an open line
People who take charge of work on or near points
People who carry out patrolling/inspecting duties

Other competencies (IWA, COSS, PC, ES, MC, CC)

Name & Issue	Issue Date	Title	Synopsis
GERT8000-RBBL Iss 32.1	Jun 2019	Rule Book Briefing Leaflet	This Leaflet contains details of changes being introduced in December 2018.
GERT8000-RBBL Iss 33	Sep 2019	Rule Book Briefing Leaflet	This Leaflet contains details of changes being published in September 2019 and in-force December 2019.
GERT8000-Gloss Iss 5	Sep 2018	Glossary of Railway Terminology	The Glossary has been updated to reflect changes in terminology within TW5 which removes 'entering service' and replaces it with 'starting a journey'.
GERT8000-AC Iss 5	Sep 2018	AC electrified lines	You will need this module if you carry out the duties of a train driver, guard, shunter, designated person (DP), signaller, crossing keeper or person in charge of sidings in AC electrified areas.
GERT8000-DC Iss 4	Sep 2015	DC electrified lines	You will need this module if you carry out the duties of a train driver, guard, shunter, designated person (DP), signaller, crossing keeper and person in charge of sidings in DC electrified areas. This document has been updated as part of the December 2015 Rule Book Programme.
GERT8000-G1 Iss 6	Sep 2015	General safety responsibilities and personal track safety for non-track workers	You will need this module if you carry out the duties of a train driver, guard, shunter, designated person (DP) and a signaller or crossing keeper in General safety responsibilities and personal track safety for non-track workers. This document has been updated as part of the December 2015 Rule Book Programme.
GERT8000-HB1 Iss 4	Sep 2015	General duties and track safety for track workers	This handbook is for those personnel who need to go on the operational railway to carry out their duties, with the exception of a train driver, guard, shunter, signaller, crossing keeper or designated person (DP). This handbook has been updated as part of the December 2015 Rule Book Programme.

Controlled Documents



Name & Issue	Issue Date	Title	Synopsis
GERT8000-HB2 Iss 2	Sep 2015	Instructions for track workers who use emergency protection equipment	This handbook is for those personnel who need to go on the operational railway to carry out their duties and have been trained to carry out emergency protection. It does not apply to: train drivers, guards, shunters, signallers, crossing keepers and those who act as a designated person (DP). This document has been updated as part of the December 2015 Rule Book Programme.
GERT8000-HB3 Iss 3	Sep 2014	Duties of the lookout and site warden	This handbook is for those personnel who have duties of the lookout and site warden. Information on changes to this issue can be found in the Rule Book Briefing Leaflet (GERT8000-RBBL Iss 27).
GERT8000-HB4 Iss 2	Sep 2014	Duties of a points operator and route-setting agent - moving and securing points by hand	This handbook is for those personnel who has duties of a points operator and route-setting agent - moving and securing points by hand. Information on changes to this issue can be found in the Rule Book Briefing Leaflet (GERT8000-RBBL Iss 27).
GERT8000-HB5 Iss 2	Sep 2011	Handsignalling duties	This handbook is for those who carry out handsignalling duties.
GERT8000-HB6 Iss 5	Sep 2015	General duties of an individual working alone	This handbook is for those personnel with general duties of an individual working alone (IWA). This handbook has been updated as part of the December 2015 Rule Book Programme.
GERT8000-HB7 Iss 5	Sep 2015	General duties of a controller of site safety (COSS)	This handbook is for those personnel who have the general duties of a controller of site safety (COSS). This document has been updated as part of the December 2015 Rule Book Programme.
GERT8000-HB8 Iss 7	Sep 2017	IWA, COSS or PC blocking a line	You will need this handbook if you carry out the duties of a IWA, COSS or PC blocking a line.
GERT8000-HB9 Iss 6	Sep 2017	IWA or COSS setting up safe systems of work within possessions	You will need this handbook if you carry out the duties of an IWA or COSS setting up safe systems of work within possessions. This document has been updated as part of the December 2015 Rule Book Programme.
GERT8000-HB10 Iss 4	Sep 2015	Duties of the COSS or SWL and person in charge when using a hand trolley	You will need this handbook if you are the COSS or SWL and person in charge when using a hand trolley. This document has been updated as part of the December 2015 Rule Book Programme.
GERT8000-HB11 Iss 6	Sep 2017	Duties of the person in charge of a possession (PICOP)	You will need this handbook if you carry out the duties of the PICOP. This document has been updated as part of the December 2015 Rule Book Programme.
GERT8000-HB12 Iss 6	Sep 2017	Duties of the engineering supervisor (ES) or safe work leader (SWL) in a possession	You will need this handbook if you carry out the duties of the ES or SWL in a possession. This document has been updated as part of the December 2015 Rule Book Programme.
GERT8000-HB13 Iss 2	Sep 2014	Duties of the person in charge of the siding possession (PICOS)	You will need this handbook if you carry out the duties of a PICOS. Information on changes to this issue can be found in the Rule Book Briefing Leaflet (GERT8000-RBBL Iss 27)
GERT8000-HB14 Iss 2	Mar 2014	Duties of the person in charge of loading and unloading rail vehicles during engineering work	You will need this handbook if you carry out the duties of the person in charge of loading and unloading rail vehicles during engineering work.
GERT8000-HB15 Iss 5	Sep 2017	Duties of the machine controller (MC) and on-track plant operator	You will need this handbook if you carry out the duties of the machine controller (MC) and on-track plant operator. This document has been updated as part of the December 2015 Rule Book Programme.
GERT8000-HB16 Iss 4	Sep 2018	AC electrified lines	This handbook is for those personnel who need to go on the operational railway in an AC electrified area to carry out their duties.

Controlled Documents



Name & Issue	Issue Date	Title	Synopsis
GERT8000-HB17 Iss 3	Sep 2015	DC electrified lines	This handbook is for those personnel who need to go on the operational railway in a DC electrified area to carry out their duties. This document has been updated as part of the December 2015 Rule Book Programme.
GERT8000-HB18 Iss 4	Sep 2015	Duties of a Level Crossing Attendant	You will need this handbook if you carry out the duties of a level crossing attendant. This document has been updated as part of the December 2015 Rule Book Programme.
GERT8000-HB19 Iss 3	Sep 2015	Work on signalling equipment - duties of the signalling technician	You will need this handbook if you carry out the duties of a signalling technician. This document has been updated as part of the December 2015 Rule Book Programme.
GERT8000-HB20 Iss 2	Sep 2015	General duties of a safe work leader (SWL) working outside a possession	You will need this handbook if you have the general duties of a safe work leader working outside a possession. This document has been updated as part of the December 2015 Rule Book Programme.
GERT8000-HB21 Iss 4	Sep 2018	Safe work leader (SWL) blocking a line	You will need this handbook if you are a safe work leader (SWL) blocking a line.
GERT8000-OTM Iss 8	Sep 2017	Working of on-track machines (OTM)	You will need this module if you carry out the duties of a driver of an on-track machine, operator of an on-track machine or signaller. This document has been updated as part of the December 2015 Rule Book Programme.
GERT8000-T10 Iss 4	Sep 2014	Duties of a designated person (DP) and people working on rail vehicles	You will need this module if you carry out the duties of a designated person and people working on a rail vehicle. Information on changes to this issue can be found in the Rule Book Briefing Leaflet (GERT8000-RBBL Iss 27).
GERT8000-T3 Iss 8	Sep 2017	Possession of a running line for engineering work	You will need this module if you carry out the duties of a driver or signaller. Information on changes to the issue can be found in the Rule Book Briefing Leaflet (GERT8000-RBBL Iss 29)

Network Rail Safety Central – Information Section

Code of Conduct

The Code of Conduct establishes some minimum standards that Network Rail expects in their supply chain. It has been developed by Network Rail's National Supply Chain, Industry bodies, and the Unions. It will be reviewed and updated by members of these same groups bi-annually. Please email queries to codeofconduct@networkrail.co.uk

[Code of Business Ethics](#) (web page)
[Modern Slavery](#) (web page)

Safety Bulletins as of 9th September 2019

In this section you'll find copies of the Network Rail safety bulletins regularly sent out to staff working on the Network Rail infrastructure. These cover a range of different safety issues and are often issued in response to a specific incident.

<https://safety.networkrail.co.uk/tools-resources/safety-bulletins/>

You can refine your search by:

Bulletin type

- Archive - Lessons Learnt
- Archive - Safety Bulletins
- Safety Advice
- Safety Alert
- Safety Bulletin
- Shared Learning

There will also be an archive of past bulletins, so you can download any that you missed, or want to read again. **Please download them for the FULL TEXT OF THE BULLETINS.**

Safety Bulletins

- [Safety Bulletin – NRB19-06 Dumper overturn incident](#) May 15, 2019

Safety Advice

- [Safety Advice NRA19-10 OTP Travelling Speed and uni directional OTP assets](#) August 30, 2019
- [Safety Advice NRA19-09 Prohibiting use of brush cutters fitted with a 'Metal star blade' for brush cutting works](#) August 5, 2019
- [Safety Advice NRA19-08 – Systems of work requiring touch lookouts](#)

Other documents

- [Safety-Alert-NRX19-06 Work force fatalities](#) July 4, 2019
- [Safety-Alert-NRX19-04-Work-affecting-level-crossing](#) June 10, 2019

Lessons Learnt / Shared Learning

Network Rail are now producing 'Lessons Learnt' publications following events which have led to Formal investigations or local investigations where significant points of learning have resulted. Network Rail believes that these lessons will be of value for all involved in the industry and not just safety professionals, they are ultimately designed to aid prevention of events of a similar nature happening again elsewhere.

[Shared Learning](#)

Health & Wellbeing

[Health and wellbeing](#) (web page)

Risk Management

[Think RISK](#) (web page)



Safety Films

<http://safety.networkrail.co.uk/Alerts-and-Campaign/Safety-Films>

In this section you will find all the safety films which are also listed in the relevant subject areas with supporting materials. Please note some of these films contain strong language and scenes which viewers might find upsetting. As such we recommend that these films are only viewed by people over the age of 16.

Have you got a good idea for a film? If you have, write into safety.central@networkrail.co.uk to let us know.

Resource Library

<https://safety.networkrail.co.uk/tools-resources/resource-library/>

The Resource Library holds a wealth of information.

SCO 24:7 (Supply Chain – Operations) Telephone

SCO 24:7 (formally the NSC247 and NDS24:7): call 01908 723500 or 085 65500 (internal)

SCO 24:7 operates 24 hours a day, 365 days of the year from the Quadrant in Milton Keynes. Our remit is to manage the real-time delivery of SCO products & services to our customers. This includes engineering haulage, materials, on track machines, infrastructure monitoring, seasonal treatment, HSEA reporting, site access services and lone worker monitoring.

Emergency

If there's a safety threat to you or to others such as:

- Animals, objects or people on or near the track
- Damage or fault at a level crossing
- A vehicle has hit a bridge
- A broken fence or open gate allowing access to the track

Please call Network Rail Emergency 24-hour helpline immediately: **03457 11 41 41**

To report a crime

Please contact the British Transport Police: **0800 40 50 40**, **999** or **Text 61016**



Useful Links

The following pages contain other useful links and safety information from various sources which may be relevant to you.

Item	Details
<p>Health and Safety Executive http://www.hse.gov.uk – Website</p>	<p>Government agency responsible for regulating risks to health and safety arising from work. HSE publications can be downloaded free in Adobe PDF format.</p>
<p>CIRAS Online http://www.ciras.org.uk – free access</p>	<p>The Confidential Incident Reporting and Analysis System Freephone number 0800 4 101 101.</p>
<p>Network Rail http://www.networkrail.co.uk – Website</p>	<p>Owner and operator of Britain's railway infrastructure.</p>
<p>Network Rail Standards http://www.ihserc.com/ – subscription required</p> <p>Network Rail Standards Subscriptions IHS Global Ltd Phone: 01344 328000</p> <p>Network Rail Standards Management Publications Manager Nicole Lockwood Phone: 01908 782 481</p> <p>Network Rail Standards Hard Copy Document Centre IHS Retail Phone: 01344 328039 Fax: 01344 328005 or email: emeastore@ihserc.com</p> <p>Network Rail Technical Drawings National Records Group Email: nrgcivils@networkrail.co.uk</p>	<p>All current Network Rail standards are available via the IHS website.</p> <p>How do I become an annual subscriber to an IHS product? IHS business packages are available to purchase on an Annual Subscription basis by either Core Selection Criteria or individual/additional supplements.</p> <p>Upon receiving the above information, we will be in contact to confirm your exact requirements along with pricing details. Before issuing a Password for Internet Access or forwarding CD ROMs we will require an official Purchase Order No. from your Company.</p>
<p>Network Rail Safety Central http://safety.networkrail.co.uk – free access</p>	<p>The site is your one-stop shop of safety information, advice, resources and useful contacts, designed to promote consistency and best practice across the whole rail industry. The information is divided under the following sections:</p> <ul style="list-style-type: none"> • Alerts & Campaign Material • Communication & Health • Commitment & Rules • Safety Groups • On Site Solutions • Toolbox
<p>RSSB Close Call System www.closecallsystem.co.uk – Register for access</p>	<p>At the request of Network Rail and its contractors, RSSB has developed a new internet-based system that will allow the industry to centrally record and analyse 'Close Call incidents'. This is known as the Close Call System.</p>

Useful Links



Item	Details
<p>Rail Safety and Standards Board http://www.rssb.co.uk – free access</p>	<p>RSSB builds industry-wide consensus and facilitates the resolution of difficult cross-industry issues. They provide knowledge, analysis, a substantial level of technical expertise, powerful information and risk management tools.</p>
<p>RSSB Websites & Online Services http://www.rssb.co.uk/rssb-websites-and-services</p>	<p>RSSB Websites & Online Services</p> <p>This is a very useful page that provides links to various other websites. These websites are fully or partially hosted by RSSB and other external organisations within the rail industry to you with useful resources and tools.</p>



Item	Details
<p>Railway Group Standards http://www.rssb.co.uk/rgs – free access</p> <p>Rail Safety & Standards Board Enquiry Desk Phone: 020 3142 5400 Website www.rssb.co.uk</p>	<p>Purchasing Railway Group Standards A copy of the order form can be found in the forms section of the RGS Catalogue or from the RGSONLINE website stated above. You will need the following details in order to complete the form:</p> <ul style="list-style-type: none"> • Railway Group Standards code and title • Quantity • Price • Purchaser's full name, business, address and telephone number • Credit card details, cheque or purchase order number <p>Then fax or post it to Willsons Printers Limited at the address below.</p> <p>Please ensure that you include your credit card details, purchase order or a cheque made payable to Willsons Printers. Payments can also be made by BACS - please contact Willsons for company bank details. Orders received will be dispatched within five working days.</p> <p>Purchasing National Operations Publications National Operations Publications are Railway Group Standards which set out mandatory requirements for direct application in the workplace. These include:</p> <ul style="list-style-type: none"> • Modular Rule Book (GERT8000) • Working Manual for Rail Staff: Handling and Carriage of Dangerous Goods (GORM3053) • Working Manual for Rail Staff: Freight Train Operators (GORM3056) • Rule Book Forms <p>Details of these documents can be found in the sections 'Document Titles and Descriptions' for Traffic Operation and Management.</p> <p>As these documents are subject to frequent change, amendments which do not justify the reissue of the module or section of the working manual are published in GERT8001, Changes to National Operations Publications.</p> <p>Willsons Printers Limited supplies the modules and handbooks which make up the Modular Rule Book, Working Manual and Rule Book forms.</p> <p>You can order these documents by contacting Denise Atkinson at Willsons Printers Limited at the address below:</p> <p>Willsons Printers Limited Highlander House Cross Street, Newark Nottinghamshire, NG24 1PP Tel: 01636702334 Fax: 01636701396 http://www.willsonshop.com</p>
<p>M&EE Networking Group Codes of Practice http://www.rssb.co.uk/rgs</p>	<p>The M&EE Networking Group is a non profit making group dedicated to the sharing of professional engineering and railway operations information and to provide a focus to the rail industry relating to operational and technical safety of plant. The group is</p>

Useful Links



Item	Details
<p>Refine results by selecting Lead Committee</p>	<p>a meeting of the professional heads of mechanical and electrical engineering and operations from infrastructure contractors, Network Rail, RSSB, the Rail Plant Association, London Underground and elected representatives from other infrastructure renewal companies, plant owners, and manufacturers/suppliers of plant and technical services.</p> <p>The M&EE Networking Group produces Codes of Practice and other documents as good practice for all members of the industry.</p>
<p>Rail Sentinel https://www.railsentinel.co.uk/ – registered companies only</p>	<p>Sentinel Scheme Rules The latest copy of the scheme rules can be found here: Sentinel Scheme Rules (bottom of website)</p>
<p>Office of Rail and Road http://orr.gov.uk/ – free access</p>	<p>Independent safety and economic regulator for Britain's railways, and monitor of performance and efficiency for England's Strategic Road Network.</p>
<p>Rail Accident Investigation Branch http://www.raib.gov.uk/ – free access</p>	<p>Independent railway accident investigation organisation for the UK. It investigates railway accidents and incidents on the UK's railways to improve safety, not to establish blame.</p>



Other Safety Information

Other Bulletins

Planning and Delivering Safe Work

Standard 019 – Safety of people at work on or near the line is now live.
<https://safety.networkrail.co.uk/safety/planning-and-delivering-safe-work/>

Working at Height

In January 2019 an Emergency Change NR/BS/LI413 was implemented. this affect Standard NR/L2/OHS/022 issue 1 Working Safely at Height.

- [Emergency Change – Working Safely at Heights – January 2019](#) PPTX / 30 Jan 2019
- [Working at height ukxi_20050735_en](#) PDF / 30 Jan 2019
- [Safe use of ladders HSE indg455](#) PDF / 30 Jan 2019
- [Working at Height HSE indg401](#) PDF / 30 Jan 2019

Track Safety Alliance

A few videos of interest at the Track Safety Alliance website:
<http://www.tracksafetyalliance.co.uk/videos/65/>

Southern Shield

Everyone Home Safe Every Day

Southern Shield is a collaborative safety forum that consists of Network Rail Infrastructure Projects Southern Region and its principal contractors. There are many more useful links on their website
<https://www.southernshield.co.uk/>

- Best Practice <https://www.southernshield.co.uk/best-practice/90/>
- Safety Messages <https://www.southernshield.co.uk/safety-messages/4/>
- Health & Wellbeing <https://www.southernshield.co.uk/health-and-wellbeing/82/>
- Library <https://www.southernshield.co.uk/library/3/>

SHE ALERT

Ref:
Issued by: Kier SHE Department
Date:

Welfare Unit Fire



What Happened

14/05/2019 a welfare cabin caught fire currently due to unknown reasons. Prior to the fire starting, a supervisor on site stopped at the cabin in question and observed smoke coming from the microwave which was supplied and fitted by the hire company. In an attempt to cut the power, the supervisor pulled the plugs from the sockets to the microwave and kettle and as he did this a shot of flames came from the microwave and began to spread. It was not safe for the supervisor to attempt to tackle the fire himself with the extinguishers in the cabin, so the London fire brigade (LFB) was called immediately who arrived within 15 minutes of the call. By the time they had arrived the cabin was completely engulfed in flames to which the LFB extinguished within 12 minutes. No one was hurt in the incident and there was no impact on the environment.

The followings items are not yet known to be causations to the incident as the investigation is still ongoing, however as a minimum the following action must be taken:

Ensure the following:

- Welfare units are fully inspected on a daily basis for defects and record findings.
- Portable appliances are tested by a competent person and records are maintained on site
- Annual electrical service and inspection is undertaken by a competent, electrically qualified person and records are maintained on site
- Switch off generators when not in use
- Generator room to be kept free from any combustible materials
- Check that all fire extinguishers are charged and in date
- Welfare units are kept clean and tidy with all rubbish disposed of in any appropriate waste bins provided
- Heaters are not covered with any items
- Materials and equipment are not stored inside or up against the welfare cabin
- Report any near misses and suspicious behaviour
- Do not use sockets to charge personal items or anything other than what is provided within the welfare
- Smoke alarms to be checked weekly

Further Information:

For more information about this incident please contact:
chris.payne@kier.co.uk - 07818 281335



SAFETY ALERT

Tick Check Zones

Suspected Case of Lyme Disease.

How did it happen?

During ecology survey work on the A27 Arundel, a colleague recently picked up ticks on their body despite taking precautions. The area is known to contain a high concentration of the insects and this part of the country is considered a 'hot spot' for the provenance of Lyme. Following blood tests for unrelated reasons, their GP noted a high number of white blood cells and after discussions about Lyme exposure decided to commence treatment for suspected Lyme disease.

What are ticks? Ticks are small, spider like blood feeding creatures which can carry several diseases harmful to humans. Ticks live in vegetation & are present across almost all the UK. They are particularly endemic in woodland, heathland areas and areas with livestock, but ticks can also be found in cities and gardens. Ticks are most active March to October and enjoy warm humid climates and habitats.

Should I be concerned? Anyone that works out on site or actively enjoys the outdoors, increases their potential risk of contracting Lyme disease from infected ticks. The prevalence of, and the proportion of infected ticks, as well as positive diagnosis of Lyme's disease is increasing in the UK.

What is Lyme disease? Lyme, and other tick related diseases are caused by a bacterium carried by infected ticks (not all ticks carry harmful diseases) which can be transmitted to people when bitten. Lyme disease complications can range from mild to serious. Lyme disease is very difficult to diagnose, with common false negative blood results, but early antibiotic treatment is vital to prevent spread throughout the body.

Initial symptoms can include:

- A skin rash sometimes shaped as a bulls-eye, which can expand and move around the body
- Tiredness
- Chills
- Fever
- Headache
- Muscle and joint pain
- Swollen lymph glands
- Blurred vision

If untreated within first few weeks, it can develop into long term debilitating illnesses which are difficult to manage:

- Arthritis
- Nervous system problems
- Paralysis of facial muscles (Bell's palsy)
- Memory problems
- Irregular heart rhythm

DO

- Risk assess Lyme disease for your site visits and plan works accordingly.
- If there is a risk, consider the following:
 - Consult [NHS advice](#) on ticks prior to survey
 - Wear long-sleeved clothing / long trousers and tuck in clothing to reduce chances of ticks getting to skin
 - Wear light-coloured clothing (e.g. high-viz) so ticks are visible and can be brushed off person before they bite
 - Regularly inspect your clothing during works and brush off ticks to prevent biting
 - Consider using insect repellent on either your cloths or skin to decrease chances of tick bites (observe manufacturer's instructions for use).
 - Avoid moving through dense vegetation where ticks may be present plan work to avoid areas known contain lots of ticks
 - Carry tick removing tools and follow instructions for use when removing ticks
 - Check body carefully each day ASAP after survey (concentrate on Tick Check Zones), consider a 'tick buddy' for difficult to see areas – remove any ticks using tick removal tool and clean area.
- If you are unable to remove ticks, seek immediate medical assistance.
- Record any known bite incidents on your reporting system
- Know the symptoms; if they appear within 3 months after work in a tick area, seek immediate medical advice, tell them your work puts you at risk of contracting Lyme and you want to be treated on that assumption, as per NHS advice (British Infection Association, 2011).

DON'T

- Panic!
- Crush a tick's body or squeeze the body of the tick;
- Apply petroleum jelly, nail polish or any other chemical;
- Attempt to burn a tick off;
- Use fingernails to try and remove a tick;
- Make excuses to avoid seeking medical attention, or
- Disregard any potential symptom – even if you didn't find a tick, but have been in an area at risk – get it checked out!

ZERO HARM
MAKE SAFETY
PERSONAL





July 2019



Incident Alert – Floor Saw Ignited During Refuelling.

Overview of the Incident:

Injury	Date of Incident	Business Unit
No Injury	01/07/2019	Telecoms

What Happened?

While an operative was refuelling a floor saw the vapour between the fuel canister (green container) and the item of plant ignited.

No injuries were sustained by the operative, however, a third party vehicle parked close by sustained heat damage to the panelling

The correct process was being used:

- The equipment was turned off, and all moving parts had come to a stop.
- A funnel and the appropriate storage container for fuel was in place.

Contributing factors:

1. The temperatures on site the day of the incident was in the high 20's
2. The temperature within the van where the fuel was stored could have been in the mid to high 30's lowering the ignition point of the flammable liquid
3. The time taken from the floor saw being switched off and operative returning with more fuel did not allow sufficient cooling time.
4. Weather conditions on site were very dry with a light breeze, allowing the fuel vapour to spread.

It is a rare combination of the right circumstances (heat, fuel & air), however it can happen.

Preventative Actions:

- Only if it is safe and secure to do so store fuel containers in a shaded area, if not possible be aware of the increased risk from flammable substances in hot environmental conditions and storage requirements. Seek advice from a member of the QESH team if not sure.
- Ensure plant is fuelled at the start of the day when it is cool.
- When refuelling leave 5-10 minutes after turning off and all moving parts are stationary.

One Supply Chain 2019

Lessons Learnt



Cut-Off Saw Lost Time Injury – Frankley WTW

Incident Summary

What happened?

On 21-052019, during a planned process of cutting a large cast iron pipe (with a keel cutter), a deviation to prescribed RAMS was made and a petrol cutting saw was introduced and used. Unfortunately following this change, the petrol saw kicked back and the blade struck the user's face causing a significant cut / injury to the users face (IP).

What are the consequences?

The cut to the IP's face was from his top lip to underneath his chin, requiring hospitalisation and specialist medical treatment. The current prognosis is for a good recovery, however long term scarring and/or nerve damage is possible.

What was the Potential?

There was a realistic potential for a greater injury or fatality, as machinery and tools such as this are dangerous if not used correctly or treated with respect. Consequently we ask all readers to heed this event and ask themselves - could this happen in your work, with your colleagues or at your site?

Photographs



Injured Party



Saw kick back zone

What caused this accident – (What We Need To Do Differently):

- An incorrect disc was used for this task. – **Correct selection of the disc is essential for safe working.**
- The chosen position & ergonomics were not correct. – **Always allow sufficient room to safely work.**
- The saw blade entered the known kick back zone. – **Always follow the equipment safety manual & directions.**
- The introduction of the petrol cut off saw was a deviation from the prescribed SSOW. – **Any deviation from a prescribed safe system of work must be assessed and authorised.**
- The selection of the petrol saw introduced greater hazards than those of a keel cutter. – **Always seek a less hazardous process before deploying a cut off saw.**
- The risk was not assessed at the point of deviation. – **Remember: STOP – TAKE 20 – SEEK APPROVAL.**
- Colleagues did not intervene when the team deviated from the SSOW. – **Look after your mate! – challenge and prevent an incident.**

Compiled By:	James Angus	Title:	SHEQ Advisor	Date:	21-06-2019
Reviewed By:	Keith Dent	Title:	SHEQ Manager	Date:	21-06-2019
Approved By:	Fraser Ashley	Title:	Project Director	Date:	21-06-2019





One Supply Chain 2019

Lessons Learnt



Hand Injury – Thornton Reservoir

Incident Summary					
What happened?					
<p>As part of the Thornton Reservoir Project the existing spillway is being lined which involves the construction of both in situ and precast concrete units. At the bottom end of the spillway there is a deflection structure that is formed using 15nr precast units. Whilst unloading and placing the precast units the slinger signaller was landing the final unit into the bespoke cradle so that the unit could be transferred to the vertical to place into position in the spillway. During the process of lowering the precast concrete unit into the cradle, the IP pinched his right hand in between the precast unit and the cradle.</p>					
What are the consequences?					
<p>The index and middle fingers of the IP's right hand became pinched between the load and the cradle whilst attempting to locate the final unit into the cradle, consequently bruising and cutting the IP's fingers (see photo 2).</p>					
What was the potential?					
<p>Although the injury sustained was relatively minor, the potential outcome could have been a lot more severe. Consequently, we ask all readers to re-brief the recent Safe Hands (Protecting Hands & Fingers across the OSC) Tool Box Talk.</p>					
Photographs					
					
Photo 1: Pre-cast unit engaging the cradle.		Photo 2: IP's right hand.			
What caused this incident – (What do we need to do differently):					
<p>Incorrect Task Control - Be aware of the job tasks, equipment and materials that can create a risk for a hand injury, and know the steps that should be taken to prevent exposures and injuries</p>					
<p>Incorrect behaviours – Assess competency of all operatives on site undertaking a new task. REMEMBER...holding a qualification does not make you competent.</p>					
<p>Deviation from Safe System of Work (SSOW) – ANY deviation from a prescribed SSOW MUST be assessed and authorised.</p>					
<p>Incorrect Hazard appreciation (no established exclusion zone/ no tag line used) – Look after your mate, prevent and challenge all unsafe acts.</p>					
Compiled by:	Chris Jones	Title:	Delivery Manager	Date:	03/07/19
Reviewed by:	Liam Cartwright	Title:	H&S Advisor	Date:	10/07/19
Approved by:	John Breeze	Title:	H&S Manager	Date:	10/07/19

Safety Bulletin

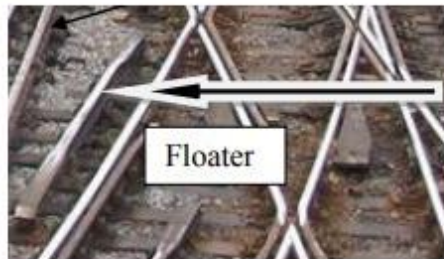
A serious incident has taken place



Serious Safety Incident

Issued to: All South East Route

Date of Issue: 07/0819



Overview

A serious safety incident occurred last night when a colleague setting up site lighting came in to contact with the live conductor rail. The live rail was a floater believed to have been isolated (example of a floater above)*.

The IP suffered severe burns to their hands. However, this could have been a lot worse but the IP was wearing flame retardant PPE and gloves at the time.

The investigation is currently ongoing but we'd like to issue a few immediate reminders.



Never assume equipment is isolated
– always test before touch.

Actions/Discussion Points

- Always assume that the third rail is live and test before touch
- Are you aware of live floaters in your worksites?
- Always wear the correct PPE for the task
- Are you indicating live floaters on site using devices such as self-testing con rail indicator devices?

Floaters are short lengths of conductor rail that can abut or infringe an isolation and can remain live because they are fed from an adjacent live conductor rail in a different electrical section.

Part of our group
of Safety Bulletins

Safety
Alert

Safety
Bulletin

Safety
Advice

Shared
Learning



South East Route



Safety Bulletin

A serious incident has taken place



Significant Near Miss— Swale

Issued to: SE Route

Ref: OI 250620

Date of Issue: 31/07/19

Location: Ashford DU/Swale Station Approach



Overview

On the 31st July a Patrolling team experienced a serious near miss outside Swale station.

The team consisted of a COSS and 2 lookouts. They had just completed their patrol when they identified some loose clips and proceeded to knock these in under site lookout protection.

The lookout did not see the approaching train and failed to give a warning. The train was travelling at approximately 30mph and narrowly missed striking the group. They only moved clear on hearing the driver sound his horn.

An Investigation is ongoing into this significant event. Once concluded additional learning points will be shared however this event is particularly shocking following the recent tragic fatalities of our colleagues in Wales only 4 weeks ago.

Key Learning / Discussion Points

- Before you go on or near the line, you must make sure you fully understand the safe system of work
- Whenever circumstances change the revised safe system of work should be re briefed by the COSS/PIC
- The importance of Lookout/s having clear instruction regarding which lines and direction of travel they are looking out for
- Tell the lookout where you want him to look and make sure sufficient sighting distance can be achieved in all directions.
- Do you test your Safe System of Work before starting work?

Part of our group of Safety Bulletins

Safety Alert

Safety Bulletin

Safety Advice

Shared Learning



South East route

TSA

Track Safety Alliance

Safety Bulletin – Use of Hand Trolleys

For attention of All TSA Principal Contractors and their Delivery Teams

Overview:

There have been several incidents recently where staff pushing trolleys have fallen and been hit in the face by the Trolley brake handle. This would not happen if the trolley push bars were in position.

Staff are using the brake handle to push the loaded trolley. This is unsafe and unsuitable. As a result, staff have fallen forward and released the brake handle which has sprung up and hit them in the face.

All trolleys should come with push bars. And a proper Brake Handle.

Also, the brake handle should never be tied or secured in the "Off" position.

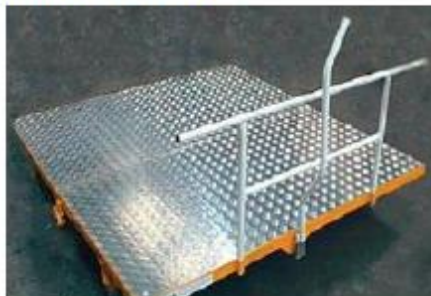
This creates the potential for a runaway, Because of these events Push Handles are now mandated.

Review:

No push handles in place:



Correctly set up trolley:



Brake handle tied in the "off" position:



Anybody who operates a Hand Operated Trolley needs to hold the relevant Hand Trolley Controller Competence. **SAFE LOADING AND OPERATION**

The maximum uniformly distributed load (UDL) on a hand trolley is 1 Tonne.

The load **MUST NOT** interfere with the correct operation of the brake handle.

The Load **MUST NOT** overhang the sides of the trolley *unless a risk assessment has been completed and any necessary protection of an adjacent line has been arranged*

Hand Trolley's must be properly assembled in accordance with the (OEM) Original Equipment Manufacturer instructions

A visual check of the brakes must be made before placing the Hand Trolley on the line, and its brakes must be tested by a push test before it is loaded or used. Push bars, Side boards and End boards must be the correct type supplied by the OEM.

Only the braking lever supplied by the OEM may be used to operate the brakes.

For further support or guidance please contact IP Track S&SD

IPTrackSandSD@Networkrail.co.uk

Issued: 28/03/2018

TSA

Author: IP Track S&SD



Adverse Event Investigation PR1636T
Allied Exploration & Geotechnics

HEALTH & SAFETY BULLETIN

What Happened

On 29th April Allied Exploration & Geotechnics Limited were engaged in ground investigation works at Dean Clough Lower Reservoir in Great Harwood. The investigation included hand excavation, mechanical excavation, cable percussion boring and rotary drilling/coring works. Scaffolding platforms were erected as part of the enabling works.

On the 30th April during the U100 Sliding hammer setup on the cable percussive rig an incorrect sample tube was left in the assembly. The Lead Driller attempted to remove the jammed sample tube from the U100 Sliding hammer by hanging it in the vertical position by the winch. He then used various techniques to free the sample tube (a) by tapping with a hammer on the side of the casing, (b) Physically lifting the whole unit 200-300mm and then allowing it to drop, (c) pulling down on tube with a pair of pliers after applying WD40 and a combination of (a) and (c). At some point in this process the Guide Bolt has sheared at the same time the Lead Driller was pulling down with the pliers in his right hand and with his left hand around the sliding hammer. As the outer casing suddenly fell his left hand was caught between the falling outer casing and the edge/top of the casing protruding out of the ground. First aid was administered on site by a colleague, and then at Blackburn Royal Infirmary.

Causes

Inadequate maintenance

The Guide Bolt which sheared was not included in any planned maintenance. Investigations showed that whilst the U100 Sliding Hammer as a whole was inspected/Checked correctly by the Lead Drillers, the unit as a whole was never stripped down to its individual component parts to check that all parts were in good condition. Had this been done on a regular basis (annually or even bi-annually) the guide bolt would have been identified as showing signs of wear and deterioration?



Lack of Supervision

All drilling rig operators are fully aware of the dangers of working on any tool suspended on the winch. The British Drilling Association Guidance for the Operation of Cable Percussion Rigs and Equipment, Section 7 clearly states that the sample should never be removed with the sampler suspended above the borehole. A lack of supervision at the exploratory hole also allowed for an incorrect sample tube to be inserted into the U100 Sliding Hammer housing.

Resultant Actions

1. All U100 Sliding Hammers withdrawn from service immediately and quarantined.
2. Immediate purchase of replacement U100 Sliding Hammers with different internal configuration which prevents the tool outer shell from separating from the central shaft even in the event of a bolt shearing.
3. Site Operations Management team to draw up a list of drilling tools and equipment not currently listed in the planned maintenance regime to ensure, where relevant component parts are identified for regular checking for wear and/or damage.
4. Site Operations Management team to also look at colour coding (or similar) to prevent incorrect sample tubes being inserted into incorrect tools
5. All Site Supervisors to receive in-house training on rig supervision.

AMBER BRIEFING LM Working on behalf of HS2

SAFETY DOCUMENTS IN PLACE

Welfare Access & Egress

Recent Incident

Following a recent incident on site which involved a strained ankle, we have identified (through investigation), that deviations from welfare set up requirements exist on site.

Historically in more than one instance this has resulted in injuries that could have been avoided, and at least one involving lost time.

Opportunities are being missed for designing out injury potential and for identifying areas for improvement:

- Gateway 7 and 8 were in place but did not identify deficiencies
The sites had been visited several times without issues identified

Example photos of poor access set up



Images show steps at above 250mm (390mm) and uneven walkway

Please ensure:

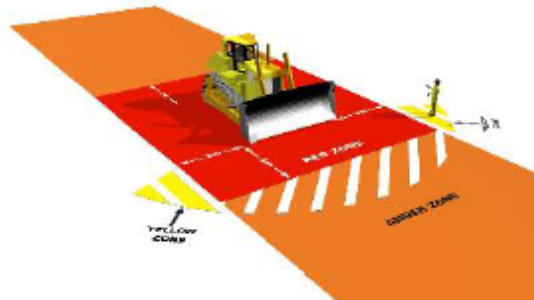
- Pre-start checks must be signed off. (Gateway 7&8)
No steps to be greater than 250mm in height and between 550 and 700mm in length.
Steps must be uniform in height
Pedestrian routes are level and free of trip hazards.
Assurance must be undertaken by the Construction Manager.
Daily checks to be undertaken by site supervisor and recorded.

AMBER BRIEFING Working on behalf of **HS2**

OPERATE PLANT SAFELY

CONTROL OUR WORK AREAS

Plant & Machinery to be operated only in risk assessed safe areas



Exclusion Zones

The law says you must organise your site to segregate pedestrians and plant & machinery. Plant & machinery used must be carefully selected, maintained and operated by trained drivers.

Plant & Machinery hazards

Most serious injuries involving plant & machinery occur during:

- **Moving** – and strikes a pedestrian, particularly while reversing;
- **Slewing** – trapping a person between the machinery and a fixed structure or vehicle; or
- **Working** – when the moving bucket or other attachment strikes a pedestrian or when the bucket inadvertently falls from the excavator.

Controlling the risk

It is important to select the right plant & machinery for the job. There are precautions needed to control plant & machinery hazards. These include:

- **Exclusion:** People should be kept away as far as reasonably practicable from areas of plant & machinery operation by the provision of suitable barriers wherever possible. Most plant & machinery related incidents involve a person working in the vicinity of the plant & machinery rather than the operator.
- **Clearance:** When slewing or manoeuvring in a restricted area the selection of plant with minimal tail swing is preferred. Clearance of over 0.5m needs to be maintained between any part of the machine, particularly the ballast weight, and the nearest obstruction.
- **Visibility:** Plant & machinery with the best view around them directly from the driver position should be selected. Plant & machinery should be equipped with adequate visibility aids to ensure drivers can see areas where people may be at risk from the operation of the machine.
- **Plant and vehicle marshal:** A Plant and vehicle marshal should be provided if required in a safe position to direct excavator operation and any pedestrian movements.

Erect fencing for designated walking routes to segregate plant & machinery



A safe workplace for all plant & vehicle operations must be established by separating pedestrians and vehicles, plant & machinery and providing hazard-free traffic routes







COSTAIN SKANSKA 24 Hour Initial Incident Report CSJV One Page Summary **HS2**

Sector	Rail	Framework / Contract	HS2 Enabling Works Contract South
Date & Time of Incident	Saturday, 10 August 2019	Incident Type	HPE
Location of Incident	Granby House, Regent's Park Estate Demolitions	Report Completed by	Megan Flanagan
IP Details	N/A	Company	Clifford Devlin for CSJV

1. Outline of Incident

A section of the 2nd floor of the south facing external brick wall of Granby House collapsed. The event occurred at the weekend when works were not being undertaken. Granby House is a brick and concrete-framed 3-storey building within the Regents Park Estate; the estate is being demolished by a Tier 2 contractor working for CSJV. The collapse involved 26m² of brickwork falling to the ground.

2. Photographs

	Photo 1. South-facing wall of Granby House with collapsed wall section		Photo 2. Floor 2 – internal wall with the studwork and plasterboard removed
	Photo 3. Internal wall detail – the bent upright is part of the tie detail between the wall and studwork frame		Photo 4. Evidence of broken tie [between wall and studwork]

3. Immediate Actions Taken

- Area barriered off
- Drone survey to establish details of the building to inform remedial measures involved in making the building safe

4. Immediate Cause / Initial Findings

- The single skin external wall relies on restraint from being tied to the structural studwork [against wind-loading]; all of the ties had been removed during soft-strip works thus removing support.
- No works had been undertaken on the 2nd floor in the previous 31 days.
- Openings had been created in the West wall; moderate winds were experienced at the weekend [speed 26mph with gusting]

• Next Steps / Recommendations

Other Safety Information



24 Hour Initial Incident Report CSJV One Page Summary



- A methodology for making the building safe i.e. removal of unstable sections
- Making safe the building

Any Regulatory Involvement?	No
Has the incident been recorded on Capture?	Yes
Name(s) of Investigation Team	Des Roy, Megan Flanagan, Declan Mullins [TWC]

EVERY CHOICE YOU MAKE HAS A CONSEQUENCE!

TAKE CARE OF TROLLEYS

DO ✓

- ✓ Keep the trolley push bars in position
- ✓ Keep trolley brakes in the 'ON' position at all times, or **YOU RISK A RUNAWAY**

DON'T X

- X Use the brake handle to push a loaded trolley. **YOU RISK SERIOUS FACIAL INJURY!**
- X Use a trolley with no push bars or proper brake handles
- X Use the equipment on the trolley to lock brakes in open position

Look after yourself
Look after your colleagues
tracksafetyalliance.co.uk

TSA 
Track Safety Alliance

Other Safety Information



Safety 3-4-3 and Fleet 3-4-3

The publication of the Safety 3-4-3 and Fleet 3-4-3 is due in mid-September 2019 and will be sent out in a separate email to all ACS Rail clients.